

STATE OF MINNESOTA, } ss.
 County of Ramsey,
 OFFICE OF THE REGISTER OF DEEDS.
 This is to certify that the within instrument was filed for Record in this office, at St. Paul, on the 7th day of March, A. D. 1885 at 2:20 o'clock P. M., and that the same was duly recorded in Book IV of Plats pages 23
 R. C. Wiley
 Register of Deeds.
 By _____ Deputy.

CHUTE BROTHERS' DIVISION NO 5

ADDITION TO THE CITY OF ST PAUL, MINN

SCALE : FIFTY FEET TO ONE INCH

This plat document is an UNOFFICIAL copy of a Subdivision Plat or Registered Land Survey and is made available for information purposes only.

To obtain an official copy please contact the Ramsey County Recorder's Office.

I hereby certify to having surveyed and platted the property as described on this map as Chute Brothers' Division No 5 Addition to the city of St Paul, Minn. and have placed iron monuments at the corners of the block, as hereon on this map shown and the same is correct

G. A. Johnson
 Surveyor *Gates A. Johnson*

We, Richard Chute and Mary E. Chute, his wife, by Samuel H. Chute, their attorney in fact, and Samuel H. Chute and Helen E. A. Chute, his wife, all of the city of Minneapolis and county of Hennepin, the undersigned owners of the west half of the east half of the south half of the south half of the north half of the northeast quarter of Section 35 Township 29 Range 23 do hereby certify to having caused the same to be surveyed and platted as Chute Brothers' Division No 5 Addition to the city of St Paul, Minn. as herein and hereon indicated, and we do hereby give and dedicate to the public and for public use forever all the streets and alley as on this map or plat laid out and designated.

In witness whereof we have hereunto set our hands and seals this 28th day of Feb'y A.D. 1885
 In presence of
Chas R. Lehute } *Samuel H. Chute* (Seal)
James G. Chute } *Richard Chute* (Seal)
Samuel H. Chute } *Samuel H. Chute* his atty in fact (Seal)
May G. Chute } *Samuel H. Chute* his atty in fact (Seal)

Be it known that on the 28th day of February A.D. 1885, personally appeared before me Samuel H. Chute and Helen E. A. Chute, his wife, to me personally known to be the same persons described in and who executed the foregoing instrument and they acknowledged that they executed the same as their free act and deed, and also at the same time appeared before me Samuel H. Chute as the attorney in fact of Richard Chute and Mary E. Chute his wife, to me known to be the persons described herein and he acknowledged that he executed this instrument in behalf of the said Richard Chute and Mary E. Chute and as their free act and deed.

Chas R. Lehute Notary Public
 Hennepin Co Minn
 St Paul, Feb. 28 1885
 Examined and approved
S. P. Holman
Jas Stankay Plat Commission.

Engineer's Office, March 3 1885.
 I have examined this plat and recommend that it be approved and accepted by the Common Council of St Paul

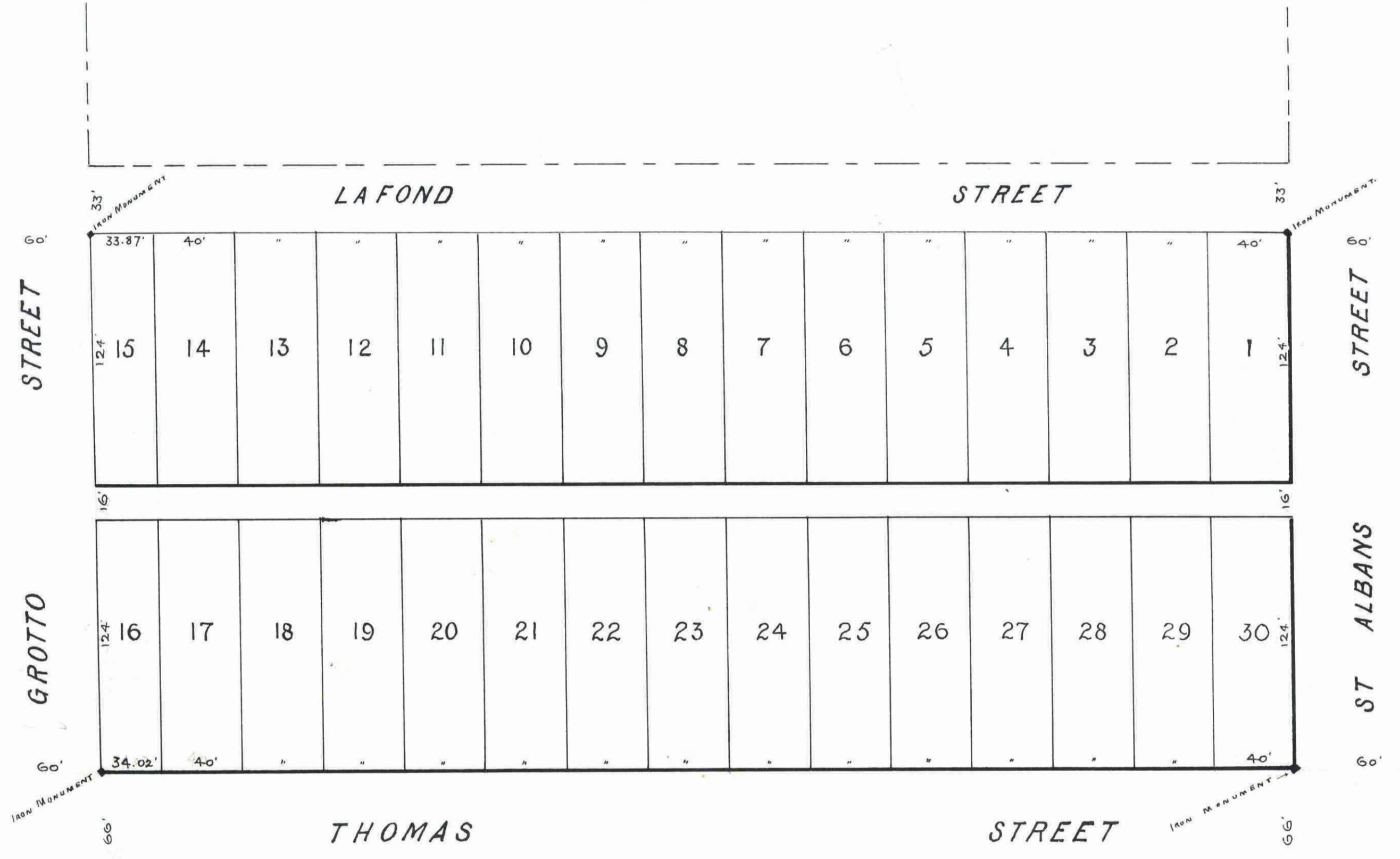
W. H. Somers
 City Engineer
 St Paul, Minn. 1885

I certify that Chute Brothers' Division No 5 Addition to the city of St Paul Minn, as exhibited on this plat was accepted by the Common Council on the 17th day of March 1885 as an addition to this city

W. H. Somers
 City Clerk, St Paul, Minn.

Auditor's Office, Ramsey County, Minn.
 Taxes paid out to date of March 20 1885
James G. Chute
 County Auditor.

City Treasurer, St Paul, Minn. 1885.
 Assessments for local improvements paid
W. L. Chapin
 City Treasurer



We hereby certify that this plat or map is a true and correct copy of an original plat or map of said Chute Brothers' Division No 5 Addition to the city of St Paul, Minn. this day approved, signed and accepted by this Commission. Dated St Paul Feb. 28 1885

S. P. Holman
Jas Stankay Plat Commission

CITY TREASURER'S OFFICE
 ST. PAUL, MINN.
 MAR 6 1885
 ASSESSMENTS
W. L. Chapin
 CITY TREASURER