

212

STATE OF MINNESOTA, ss.
 County of Ramsey,
 OFFICE OF THE REGISTER OF DEEDS.
 This is to certify that the within instrument was filed for Record in this office, at St. Paul, on the 7th day of March, A. D. 1884 at 2:30 o'clock P. M., and that the same was duly recorded in Book W of Plats pages 21

R. C. Wiley
 Register of Deeds.
 Deputy.

CHUTE BROTHERS' DIVISION NO 3

ADDITION TO THE CITY OF ST PAUL, MINN.

SCALE : FIFTY FEET TO ONE INCH

This plat document is an UNOFFICIAL copy of a Subdivision Plat or Registered Land Survey and is made available for information purposes only.

To obtain an official copy please contact the Ramsey County Recorder's Office.

I hereby certify to having surveyed and platted the property as described on this map as Chute Brothers' Division No 3 Addition to the city of St Paul, Minn. and have placed iron monuments at the corners of the block as hereon on this map shown and the same is correct.

J. P. A. Howe
 Surveyor. *Edwards Johnson*
 by Samuel H. Chute their attorney, in fact

We, Richard Chute and Mary E. Chute, his wife, and Samuel H. Chute and Helen E. A. Chute, his wife, all of the city of Minneapolis and county of Hennepin, the undersigned owners of the last quarter of the north half of the north half of the south half of the northeast quarter of section 35, Town 29 Range 23, do hereby certify to having caused the same to be surveyed and platted as Chute Brothers' Division No 3 Addition to the city of St. Paul, Minn. as herein and hereon indicated and we do hereby give and dedicate to the public and for public use forever all the streets and alley as on this map or plat laid out and designated.

In witness whereof we have hereunto set our hands and seals this 14th day of February, A.D. 1885. *Samuel H. Chute*

In presence of
Richard Chute
Mary E. Chute
Samuel H. Chute

Be it known that on this 14th day of February, A.D. 1885, personally came before me Richard Chute and Mary E. Chute, his wife, and Samuel H. Chute and Helen E. A. Chute, his wife, to me personally known to be the same persons described in and who executed the foregoing instrument and acknowledged that they executed the same as their free act and deed, and as the free act and deed of the said Richard Chute and Mary E. Chute.

Samuel H. Chute
 Notary Public.

St Paul, Feb 14 1885

Examined and approved.
J. B. Johnson Plat Commission.
Jas Starkey
 Engineer's Office Feb 24th 1885.
 I have examined this plat and recommend that it be approved and accepted by the Common Council of St Paul.

W. A. Jones
 City Engineer.
 St Paul Feb 6 1885.
 I certify that Chute Brothers' Division No 3 Addition to the city of St Paul, Minn. as exhibited on this plat was accepted by the Common Council on the 6th day of Feb 1885 as an addition to this city.

W. A. Jones
 City Clerk St Paul, Minn.

Auditor's Office, Ramsey County, Minn.
 Taxes paid. *See return filed July 1886*

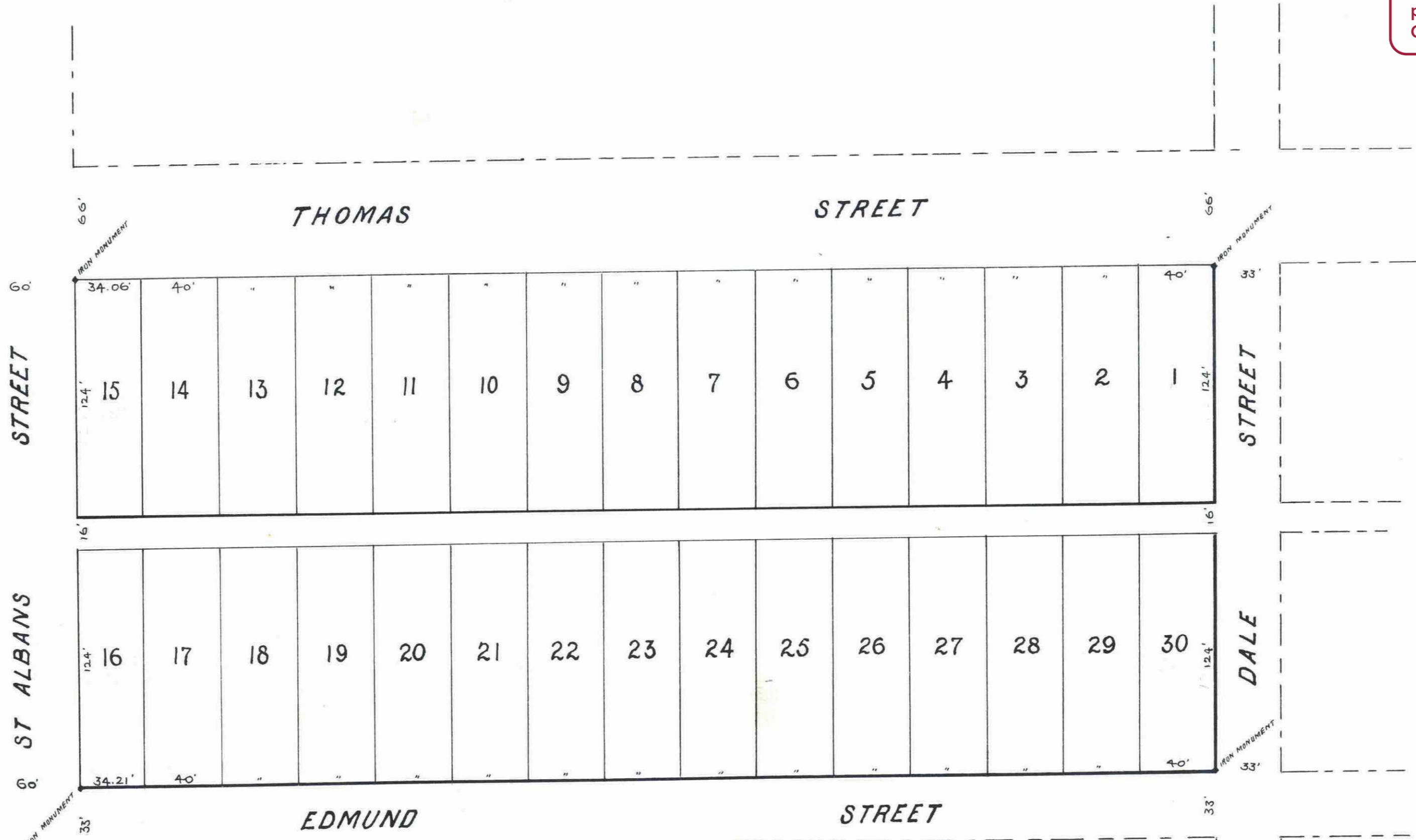
Samuel H. Chute
 County Auditor. *per S. H. Chute*
 St Paul, Minn. 1885.
 Assessments for local improvements paid.

Samuel H. Chute
 City Treasurer.

We hereby certify that this plat or map is a true and correct copy of an original plat or map of said Chute Brothers' Division No 3 Addition to the city of St Paul, Minn. this day approved, signed and accepted by this Commission.

Dated St Paul Feb 14 1885

J. B. Johnson } Plat Commission.
Jas Starkey



CITY TREASURER'S OFFICE
 ST. PAUL, MINN.
 MAR 6 1885
 ASSESSMENTS PAID
George H. W.
 CITY TREAS.