

19

This plat document is an UNOFFICIAL copy of a Subdivision Plat or Registered Land Survey and is made available for information purposes only.

To obtain an official copy please contact the Ramsey County Recorder's Office.

STATE OF MINNESOTA, ss.
 County of Ramsey,
 OFFICE OF THE REGISTER OF DEEDS.
 This is to certify that the within instrument was filed for Record in this office, at St. Paul, on the 7th day of March, A. D. 1885 at 2 o'clock P. M., and that the same was fully recorded in Book W of Plats pages 19.

R. E. Wiley, Register of Deeds.
 By _____ Deputy.

CHUTE BROTHER'S DIVISION NO 1

ADDITION TO THE CITY OF ST PAUL, MINN.

SCALE : FIFTY FEET TO ONE INCH

I hereby certify to having surveyed and platted the property as described on this map as Chute Brothers' Division No 1 Addition to the city of St Paul, Minn., and have placed iron monuments at the corners of the block as hereon on this map shown and the same is correct.

J. P. Johnson
 Surveyor, State of Minnesota
 We, Richard Chute and Mary E. Chute, his wife, and Samuel H. Chute and Helen E. A. Chute, his wife, the undersigned owners of the east one quarter of the north half of the north half of the southeast quarter of Section 35, T. 29, R. 23, do hereby certify to having caused the same to be surveyed and platted as Chute Brothers' Division No 1, Addition to the city of St Paul, Minn., as hereon and hereon indicated, and we do hereby give and dedicate to the public and for public use forever all the streets and alleys as on this map or plat laid out and designated.

In witness whereof we have hereunto set our hands and seals this 13th day of February, A. D. 1885.
 In presence of *Samuel H. Chute*
Richard Chute
Mary E. Chute
Samuel H. Chute
 Be it known that on this 13th day of February, A. D. 1885 personally came before me, Richard Chute and Mary E. Chute, his wife, and Samuel H. Chute and Helen E. A. Chute, his wife, to me personally known to be the same persons described in and who executed the foregoing instrument and they acknowledged that they executed the same freely and voluntarily for the uses and purposes herein expressed, and as then by me and as the first act and deed of the said Richard Chute and Mary E. Chute.

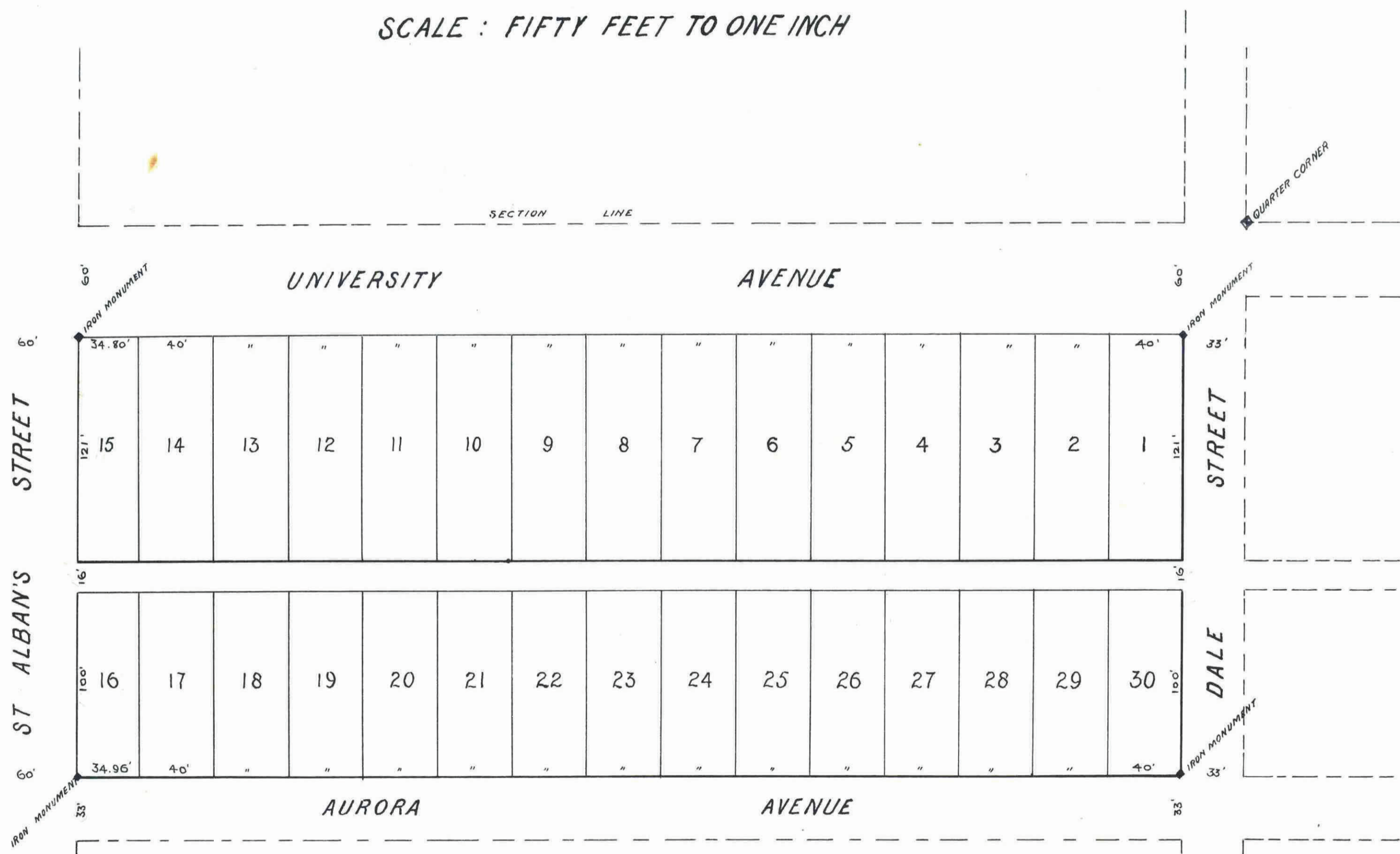
J. P. Johnson
 Notary Public
 St. Paul Feb. 14, 1885.
 Examined and approved
J. P. Johnson Plat Commission.
Jas Starkey

Engineer's Office March 3, 1885.
 I have examined this plat and recommend that it be approved and accepted by the Common Council of St Paul
J. H. Somers
 City Engineer

St Paul, Feb 6, 1885.
 I hereby certify that Chute Brothers' Division No 1, Addition to the city of St Paul, Minn., as exhibited on this plat was accepted by the Common Council on the 1st day of March, 1885 as an addition to this city.

Wm. H. Johnson
 City Clerk - St Paul, Minn.
 Auditor's Office, Ramsey County Minn.
 Taxes paid and transferred March 1, 1885
James O'Brien
 County Auditor
 City Treasurer, St Paul, Minn. 1885
 Assessments for local improvements paid

City Treasurer.
 Office of Register of Deeds, ss.
 Ramsey County
 Filed for record on the _____ day of _____ 1885.
 Register of Deeds.



We hereby certify that this plat or map is a true and correct copy of an original plat or map of said Chute Brothers' Division No 1 Addition to the city of St Paul, Minn., this day approved signed and accepted by this Commission.
 Dated St Paul Feb. 14, 1885.
J. P. Johnson Plat Commission.
Jas Starkey

CITY TREASURER'S OFFICE
 ST. PAUL, MINN.
 MAR 6 1885
 ASSESSMENTS PAID
George New
 CITY TREAS.
Chapman Dwyer