

KNOW ALL PERSONS BY THESE PRESENTS: That Hilltop Development LLC, a Minnesota limited liability company, owner of the following described property situated in the City of Saint Paul, County of Ramsey, State of Minnesota:

Lot 13, Block 9, Lane's Highland Park and that part of the East half of adjoining Wheeler Walk, formerly Fredericka Walk, vacated, lying between the extensions across said walk of the North and South lines of said Lot 13, Ramsey County, Minnesota;

And

Lots 1 and 2 and that part of Lot 3, lying East of the West 7 feet thereof, Block 10, Lane's Highland Park and that part of the West half of adjoining Wheeler Walk, formerly Fredericka Walk, vacated, lying between the extensions across said walk of the North and South lines of said Lot 1, Ramsey County, Minnesota;

And

The West 7 feet of Lot 3; Block 10, Lane's Highland Park;  
Lot 4, Block 10, Lane's Highland Park;  
Lot 5, Block 10, Lane's Highland Park, except the West 21 feet thereof.

Has caused the same to be surveyed and platted as HILLTOP TWIN HOMES.

In witness whereof said Hilltop Development LLC, a Minnesota limited liability company, has caused these presents to be signed by its proper officer this 22nd day of DECEMBER, 2025.

Signed: Hilltop Development, LLC

TM  
Chief Manager

STATE OF MINNESOTA

COUNTY OF Pine

The foregoing instrument was acknowledged before me this 23rd day of December, 2025, by Thomas Distad, Chief Manager of Hilltop Development, LLC, a Minnesota limited liability company on behalf of the company.

Allyson C Tracy  
Signed  
Allyson C Tracy  
Printed  
Notary Public, Pine County, Minnesota  
My Commission Expires January 31, 2030

I, Ryan M. Peterson, Professional Land Surveyor, do hereby certify that I have surveyed or directly supervised the survey of the property described on this plat; prepared this plat or directly supervised the preparation of this plat; that this plat is a correct representation of the boundary survey; that all mathematical data and labels are correctly designated on this plat; that all monuments depicted on this plat have been correctly set; that all water boundaries and wet lands, as defined in Minnesota Statutes, Section 505.01, Subd. 3, as of the date of the surveyor's certification are shown and labeled on this plat; and all public ways are shown and labeled on this plat.

Dated this 22nd day of December, 2025.

Ryan M. Peterson  
Ryan M. Peterson, Professional Land Surveyor  
Minnesota License No. 60424

STATE OF MINNESOTA

COUNTY OF Dakota

The foregoing Surveyor's Certificate was acknowledged before me this 22nd day of December, 2025, by Ryan M. Peterson, a Licensed Land Surveyor.

Genele Forsham  
Signed  
Genele Forsham  
Printed  
Notary Public, Dakota County, Minnesota  
My Commission Expires January 31, 2030

City of Saint Paul

I do hereby certify that on the 17th day of DECEMBER, 2025, the City Council of the City of Saint Paul, Minnesota, approved this plat. Also, the conditions of Minnesota Statutes, Section 505.03, Subd. 2, have been fulfilled.

J. Williams  
City Clerk

Property Tax, Records and Election Services Department

Pursuant to Minnesota Statutes, Section 505.021, Subd. 9, taxes payable in the year 2025 on the land hereinbefore described have been paid. Also, pursuant to Minnesota Statutes, Section 272.12, there are no delinquent taxes and transfer entered this 30th day of DECEMBER, 2025.

\_\_\_\_\_  
Ramsey County Auditor/Treasurer

By \_\_\_\_\_ Deputy

County Surveyor

Pursuant to Minnesota Statutes, Section 383A.42, this plat is approved this 30th day of DECEMBER, 2025.

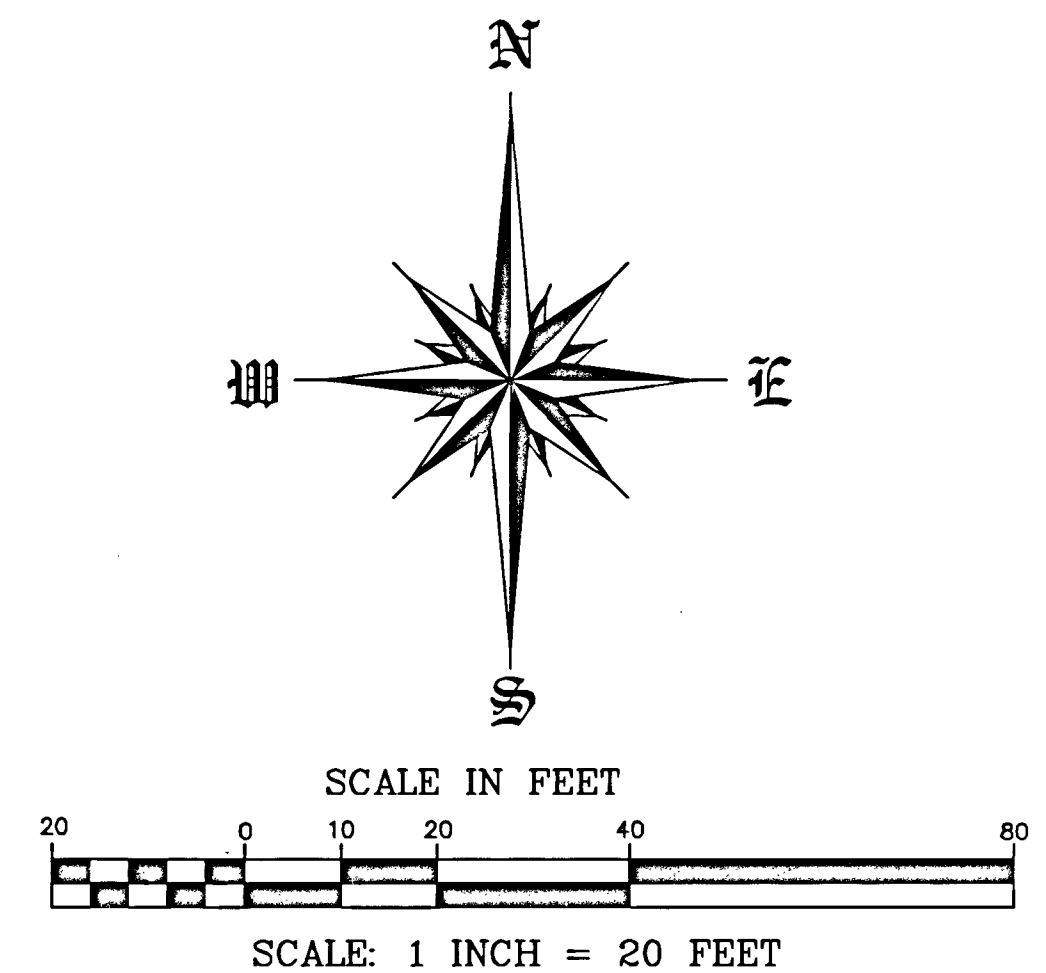
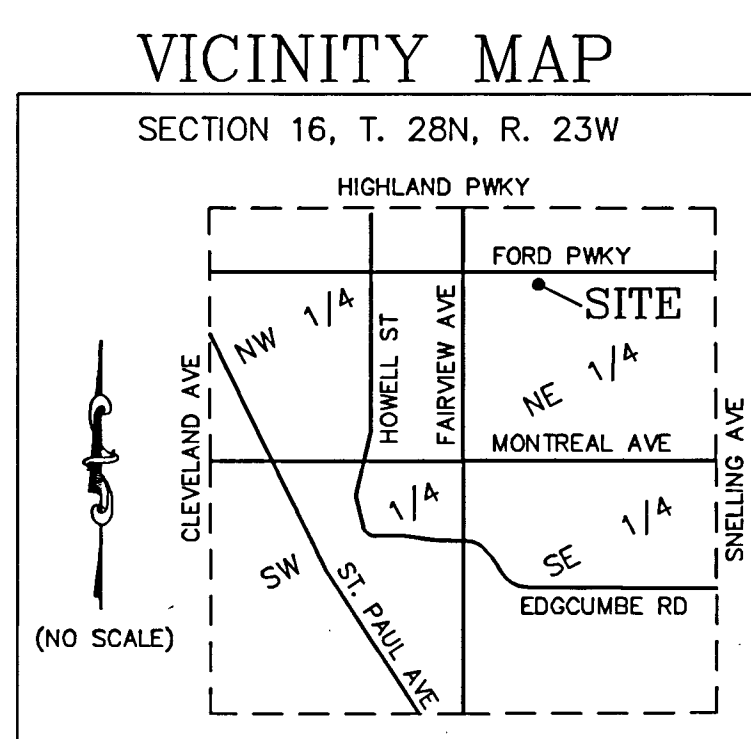
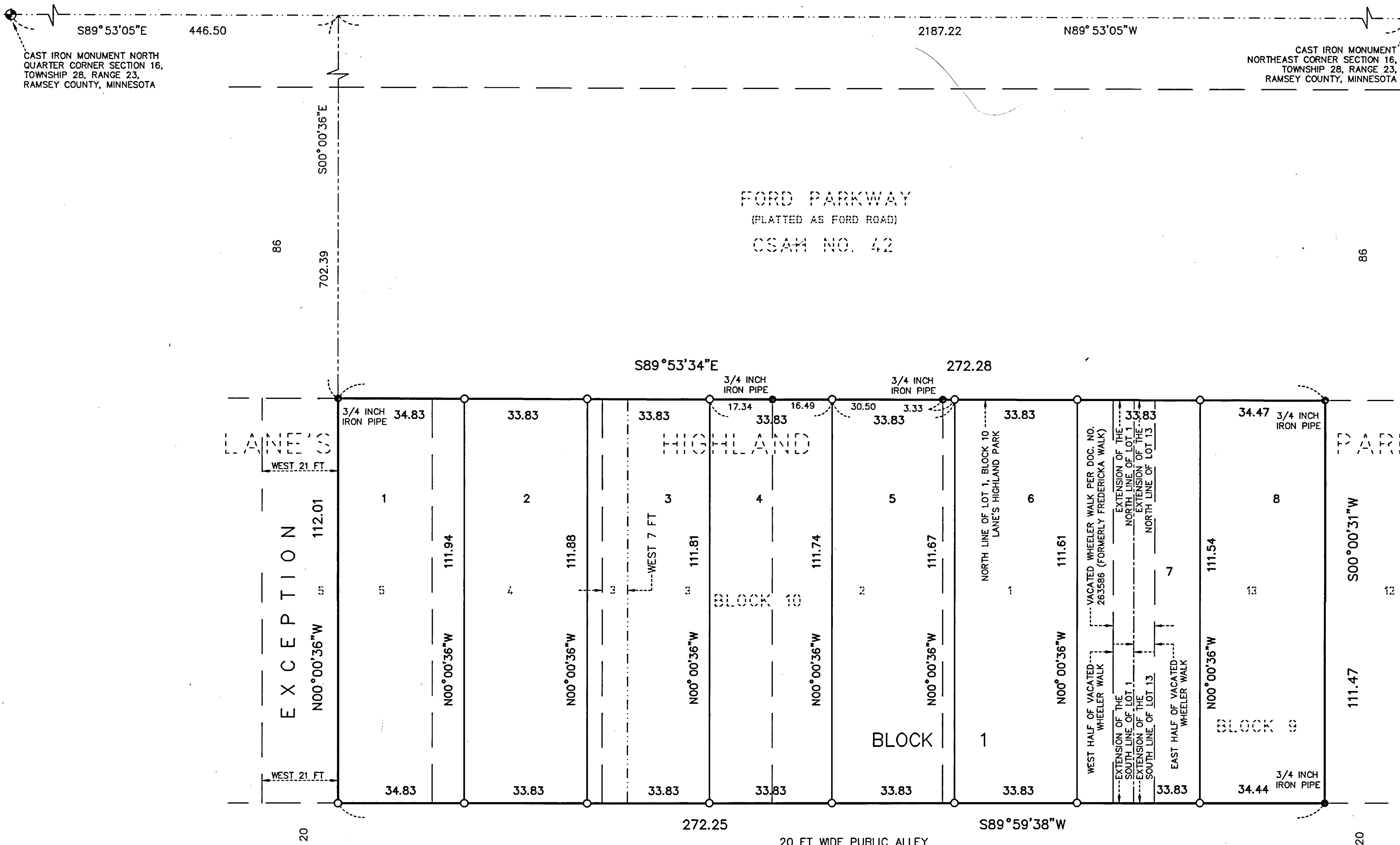
By: Stuart Daniel D. Baar  
STEPHANE J. ROBERT Daniel D. Baar, LS  
DEPUTY COUNTY SURVEYOR Ramsey County Surveyor

Registrar of Titles, County of Ramsey, State of Minnesota

I hereby certify that this plat of HILLTOP TWIN HOMES was filed in the office of the Registrar of Titles for public record on this 30th day of December, 2025, at 12:00 o'clock PM, and was duly filed in Book 95 of Plats, Page 2, as Document Number 2008800.

Deputy Registrar of Titles

# HILLTOP TWIN HOMES



- ### LEGEND
- ⊕ DENOTES GOVERNMENT CORNER MONUMENT FOUND, TYPE AS NOTED
  - DENOTES 14 INCH X 5/8 INCH REBAR MONUMENT SET AND CAPPED RLS 60424
  - DENOTES IRON MONUMENT FOUND, SIZE, AND TYPE, AS NOTED
- BASIS OF BEARINGS: FOR THE PURPOSES OF THIS PLAT THE NORTH LINE OF LOT 1, BLOCK 10 LANE'S HIGHLAND PARK IS ASSUMED TO BEAR SOUTH 89 DEGREES 53 MINUTES 34 SECONDS EAST.

**LAKE & LAND SURVEYING, INC.**  
1200 CENTRE POINTE CURVE, SUITE 375  
SAINT PAUL, MINNESOTA 55120