

RICE CREEK CORPORATE PARK 6TH ADDITION

KNOW ALL MEN BY THESE PRESENTS: That Wells Fargo Bank, National Association, a national banking association, owner of the following described property situated in the City of Shoreview, County of Ramsey, State of Minnesota:

Lots 1 and 2, Block 3, and Outlot C and Outlot D, RICE CREEK CORPORATE PARK, according to the recorded plat thereof, Ramsey County, Minnesota.

Has caused the same to be surveyed and platted as RICE CREEK CORPORATE PARK 6TH ADDITION and does hereby dedicate to the public for public use the public way and the drainage, utility and the drainage and utility easements as shown on the plat.

In witness whereof said Wells Fargo Bank, National Association, a national banking association, has caused these presents to be signed by its proper officer this 16th day of December, 2025

Signed: Wells Fargo Bank, National Association

Brent Hanson its SVP

STATE OF Minnesota
COUNTY OF Hennepin

The foregoing instrument was acknowledged before me this 16th day of December, 2025, by Brent Hanson, the SVP of Wells Fargo Bank, National Association, a national banking association, on behalf of said association.

Casey L. Dickinson
(signed)
Casey L. Dickinson
(printed)
Notary Public, Minnesota, 2030
My Commission Expires January 31st, 2025

I, Leonard F. Carlson, do hereby certify that I have surveyed or directly supervised the survey of the property described on this plat; prepared this plat or directly supervised the preparation of this plat; that this plat is a correct representation of the boundary survey; that all mathematical data and labels are correctly designated on this plat; that all monuments depicted on this plat have been correctly set; that all water boundaries and wet lands, as defined in Minnesota Statutes, Section 505.01, Subd. 3, as of the date of the surveyor's certification are shown and labeled on this plat; and all public ways are shown and labeled on this plat.

Dated this 9th day of December, 2025

Leonard F. Carlson
Leonard F. Carlson, Professional Land Surveyor
Minnesota License No. 44890

STATE OF MINNESOTA
COUNTY OF Hennepin

The foregoing Surveyor's Certificate was acknowledged before me this 9th day of December, 2025 by Leonard F. Carlson, a Professional Land Surveyor.

Laura J. Swift
Laura J. Swift
Notary Public, Minnesota
My Commission Expires January 31, 2027

CITY OF SHOREVIEW, MINNESOTA

We do hereby certify that on the 19th day of May, 2025, the City Council of the City of Shoreview, Minnesota, approved this plat. Also, the conditions of Minnesota Statutes, Section 505.03, Subd. 2, have been fulfilled.

Signed: Susan Teukerji Mayor Signed: Burt Mota Clerk

PROPERTY TAX, RECORDS AND ELECTION SERVICES DEPARTMENT

Pursuant to Minnesota Statutes, Section 505.021, Subd. 9, taxes payable in the year 2025 on the land hereinbefore described have been paid. Also, pursuant to Minnesota Statutes, Section 272.12, there are no delinquent taxes and transfer entered this 17th day of December, 2025.

_____, Ramsey County Auditor/Treasurer

By _____ Deputy

COUNTY SURVEYOR

Pursuant to Minnesota Statutes, Section 383A.42, this plat is approved this 22nd day of DECEMBER, 2025

DANIEL D. BAAR BY: STEPHANE J. ROBERT
Daniel D. Baar, L.S. Ramsey County Surveyor DEPUTY COUNTY SURVEYOR

COUNTY RECORDER, COUNTY OF RAMSEY, STATE OF MINNESOTA

I hereby certify that this plat of RICE CREEK CORPORATE PARK 6TH ADDITION was filed in the office of the County Recorder for public record on this 23rd day of December, 2025 at 10:53 o'clock A.M., and was duly filed in Book 131 of Plats, Pages 25 and 26, as Document Number 5090776

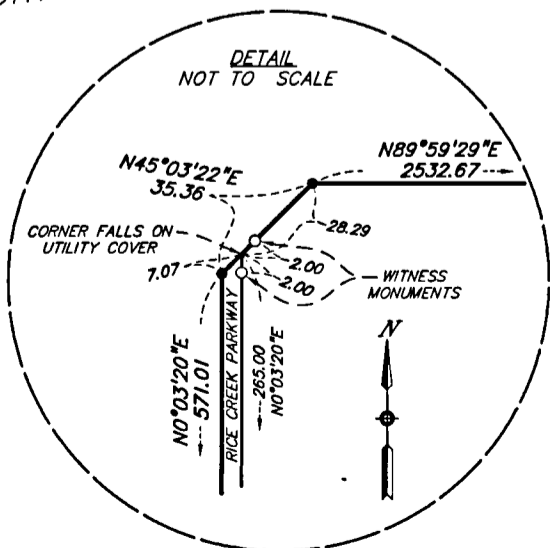
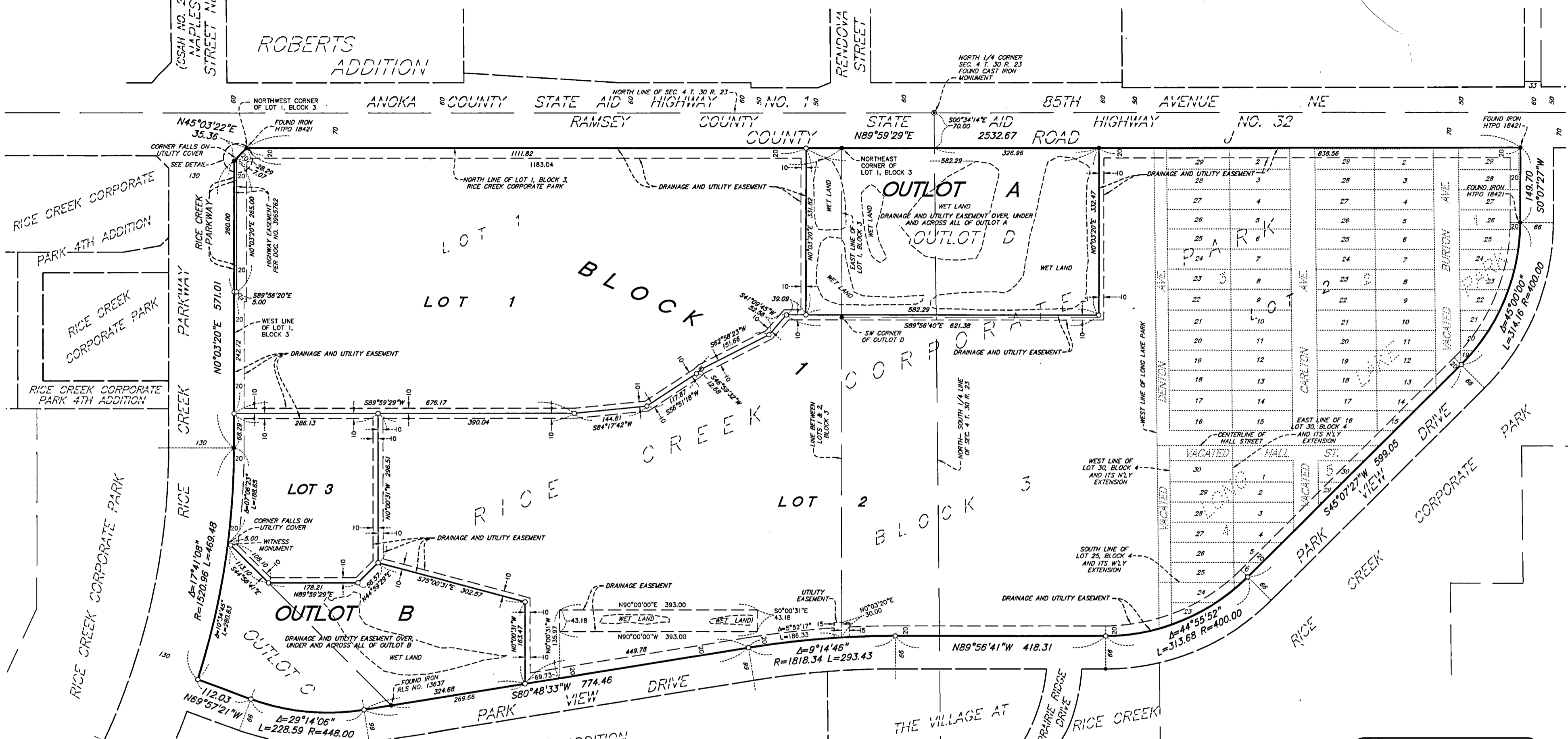
Deputy County Recorder

REGISTRAR OF TITLES, COUNTY OF RAMSEY, STATE OF MINNESOTA

I hereby certify that this plat of RICE CREEK CORPORATE PARK 6TH ADDITION was filed in the office of the Registrar of Titles for public record on this 23rd day of December, 2025 at 10:53 o'clock A.M., and was duly filed in Book 54 of Plats, Pages 48 and 49, as Document Number 2807967

Deputy Registrar of Titles

RICE CREEK CORPORATE PARK 6TH ADDITION



ALL EASEMENTS DEDICATED ON THE PLAT OF RICE CREEK CORPORATE PARK, WITHIN BLOCK 3 AND OUTLOTS C AND D, WERE VACATED PER DOC. NO. A3401065, A05083570 AND T02805480

FOR THE PURPOSES OF THIS PLAT THE NORTH LINE OF LOT 1, BLOCK 3, RICE CREEK CORPORATE PARK IS ASSUMED TO HAVE A BEARING OF N89°59'29"E.

- DENOTES 1/2 INCH BY 14 INCH IRON PIPE MONUMENT SET AND MARKED BY LICENSE NO. 44890.
- DENOTES 1.17 INCH DIAMETER COPPER MAGNETIZED MARKER WITH DISC CAP AFFIXED STAMPED LS-44890 SET
- DENOTES FOUND 1/2 INCH IRON PIPE MONUMENT AND MARKED BY LICENSE NO. 22036, UNLESS OTHERWISE NOTED
- DENOTES FOUND CAST IRON MONUMENT

