

# DIGNISUITES OF WHITE BEAR LAKE

KNOW ALL PERSONS BY THESE PRESENTS: That Bruggeman Builders LLC, a Minnesota limited liability company, owner of the following described property situated in the City of White Bear Lake, County of Ramsey, State of Minnesota:

The West 100 feet of the East 663 feet of the South 613 feet of the Southeast Quarter of the Southeast Quarter of Section 36, Township 30, Range 22, Ramsey County, Minnesota. Except that part taken for highway in Final Certificate filed September 5, 1975 as Document No. 1916002.

And  
OUTLOT C, LAKEWOOD VILLAGE, Ramsey County, Minnesota.

Has caused the same to be surveyed and platted as DIGNISUITES OF WHITE BEAR LAKE and does hereby dedicate to the public for public use forever the drainage and utility easements as created by this plat.

In witness whereof said Bruggeman Builders LLC, a Minnesota limited liability company, has caused these presents to be signed by its proper officer this 1<sup>st</sup> day of MAY, 2025

Signed: BRUGGEMAN BUILDERS-LLC  
Paul S. Bruggeman, Chief Manager

STATE OF Minnesota  
COUNTY OF Washington

The foregoing Instrument was acknowledged before me on this 1<sup>st</sup> day of May, 2025 by Paul S. Bruggeman, Chief Manager of Bruggeman Builders LLC, a Minnesota limited liability company, on behalf of the company.

(Signed)  
Gregory M. Miller (Printed)  
Notary Public, Washington County, Minnesota  
My commission expires 1/31/2026

I, Jason E. Rud, do hereby certify that I have surveyed or directly supervised the survey of the property described on this plat; that this plat was prepared by me or under my direct supervision; that I am a duly Licensed Land Surveyor in the State of Minnesota; that this plat is a correct representation of the boundary survey; that all mathematical data and labels are correctly designated on this plat; that all monuments depicted on this plat have been correctly set; that all water boundaries and wet lands as defined in Minnesota Statutes, Section 505.01, Subd. 3, as of the date of this certification are shown and labeled on this plat; and that all public ways are shown and labeled on this plat.

Dated this 2<sup>nd</sup> day of OCTOBER, 2024

Jason E. Rud, Licensed Land Surveyor  
Minnesota License No. 41578

STATE OF MINNESOTA  
COUNTY OF ANOKA

This Instrument was acknowledged before me on this 3<sup>rd</sup> day of October, 2024 by Jason E. Rud, a Licensed Land Surveyor.

(Signed)  
Lavae Mack (Printed)  
Notary Public, Anoka County, Minnesota  
My commission expires January 31, 2027

CITY COUNCIL, CITY OF WHITE BEAR LAKE

We do hereby certify that on the 25<sup>th</sup> day of July, 2023, the City Council of the City of White Bear Lake, Minnesota, approved this plat. Also, the conditions of Minnesota Statutes, Section 505.03, Subd. 2, have been fulfilled.

Mayor  
Clerk

PROPERTY TAX, RECORDS AND ELECTION SERVICES DEPARTMENT

Pursuant to Minnesota Statutes, Section 505.021, Subd. 9, taxes payable in the year 2025 on the land hereinbefore described have been paid. Also, pursuant to Minnesota Statutes, Section 272.12, there are no delinquent taxes and transfer entered this 1<sup>st</sup> day of May, 20.

Ramsey County Auditor/Treasurer

By: Deputy

COUNTY SURVEYOR

Pursuant to Minnesota Statutes, Section 383A.42, this plat is approved this 9<sup>th</sup> day of MAY, 2025

BY: STEPHANE J. ROBERT  
DEPUTY COUNTY SURVEYOR

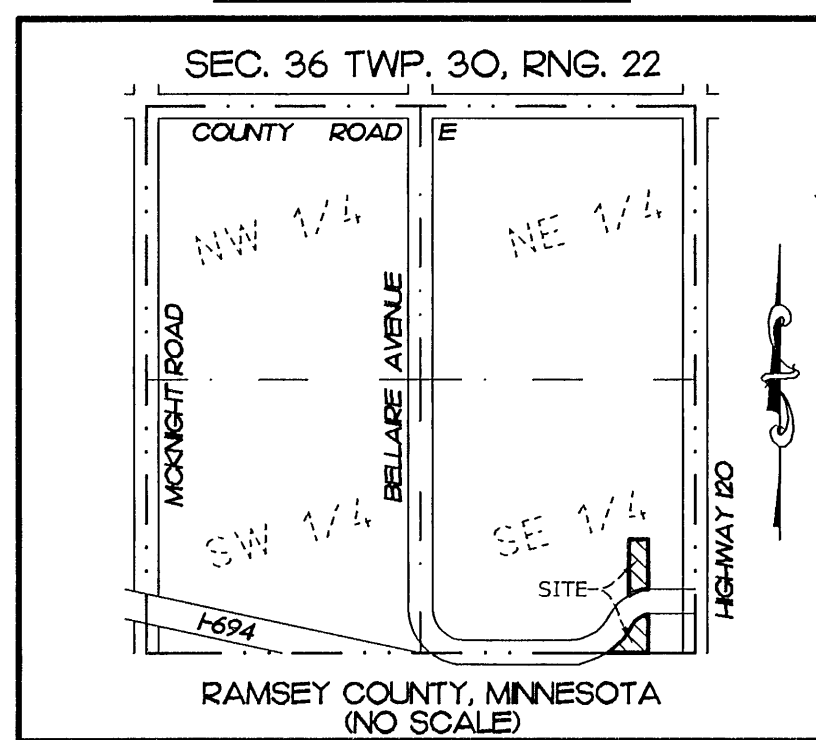
DANIEL D. BAAR  
Daniel D. Baar, L.S.  
Ramsey County Surveyor

COUNTY RECORDER, COUNTY OF RAMSEY, STATE OF MINNESOTA

I hereby certify that this plat of DIGNISUITES OF WHITE BEAR LAKE was filed in the office of the County Recorder for public record on this 2<sup>nd</sup> day of JULY, 2025 at 8 o'clock A.M. and was duly filed in Book 131 of Plats, Page 10, as Document Number 5071253.

Deputy County Recorder

## VICINITY MAP

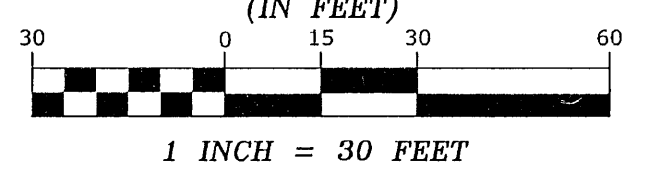


## LEGEND

- DENOTES IRON MONUMENT FOUND AS LABELED
- DENOTES 1/2 INCH BY 14 INCH IRON PIPE SET, MARKED RLS NO. 41578
- ⊕ DENOTES RAMSEY COUNTY MONUMENT, AS LABELED
- WET LAND DENOTES WET LANDS DELINEATED BY BOPRAY ENVIRONMENTAL SERVICES, LLC IN 2023
- (10.24-PLAT) DENOTES DIMENSION PER THE PLAT OF LAKEWOOD VILLAGE

FOR THE PURPOSES OF THIS PLAT, THE SOUTH LINE OF THE SOUTHEAST QUARTER OF THE SOUTHEAST QUARTER OF SECTION 36, TOWNSHIP 30, RANGE 22 IS ASSUMED TO HAVE A BEARING OF SOUTH 89 DEGREES 43 MINUTES 58 SECONDS WEST.

## GRAPHIC SCALE



E. G. RUD & SONS, INC.  
EST. 1977 Professional Land Surveyors

