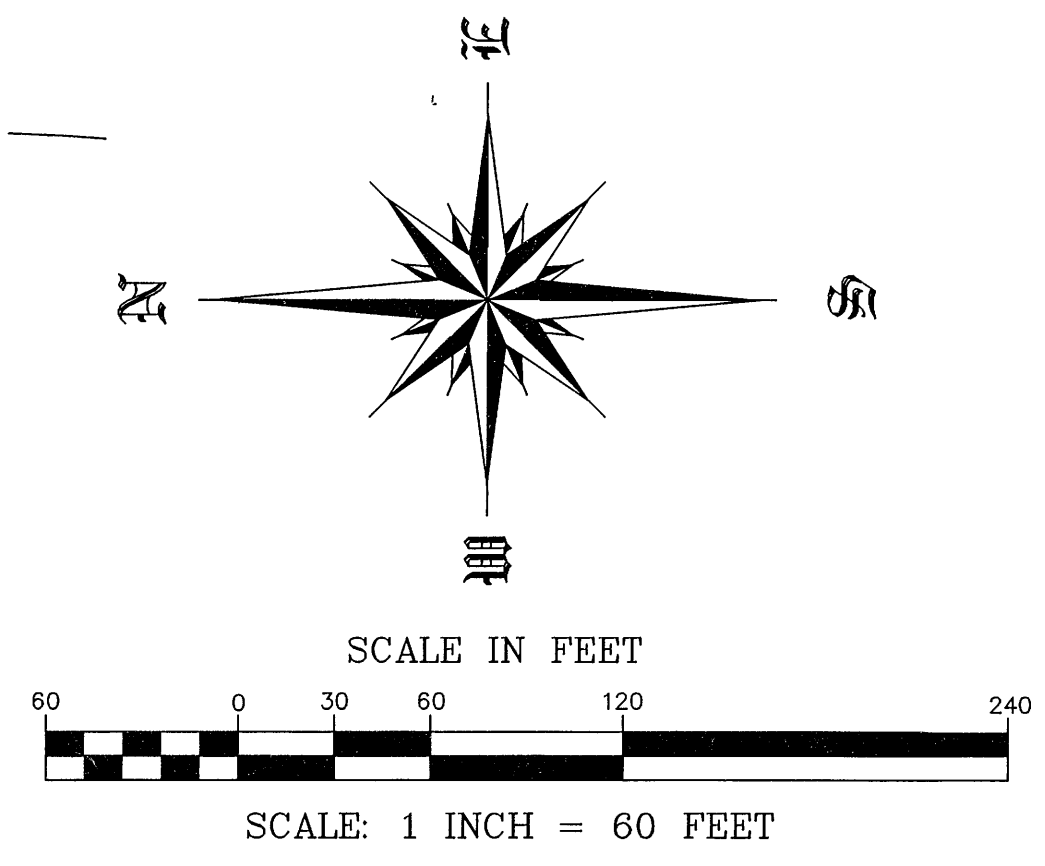
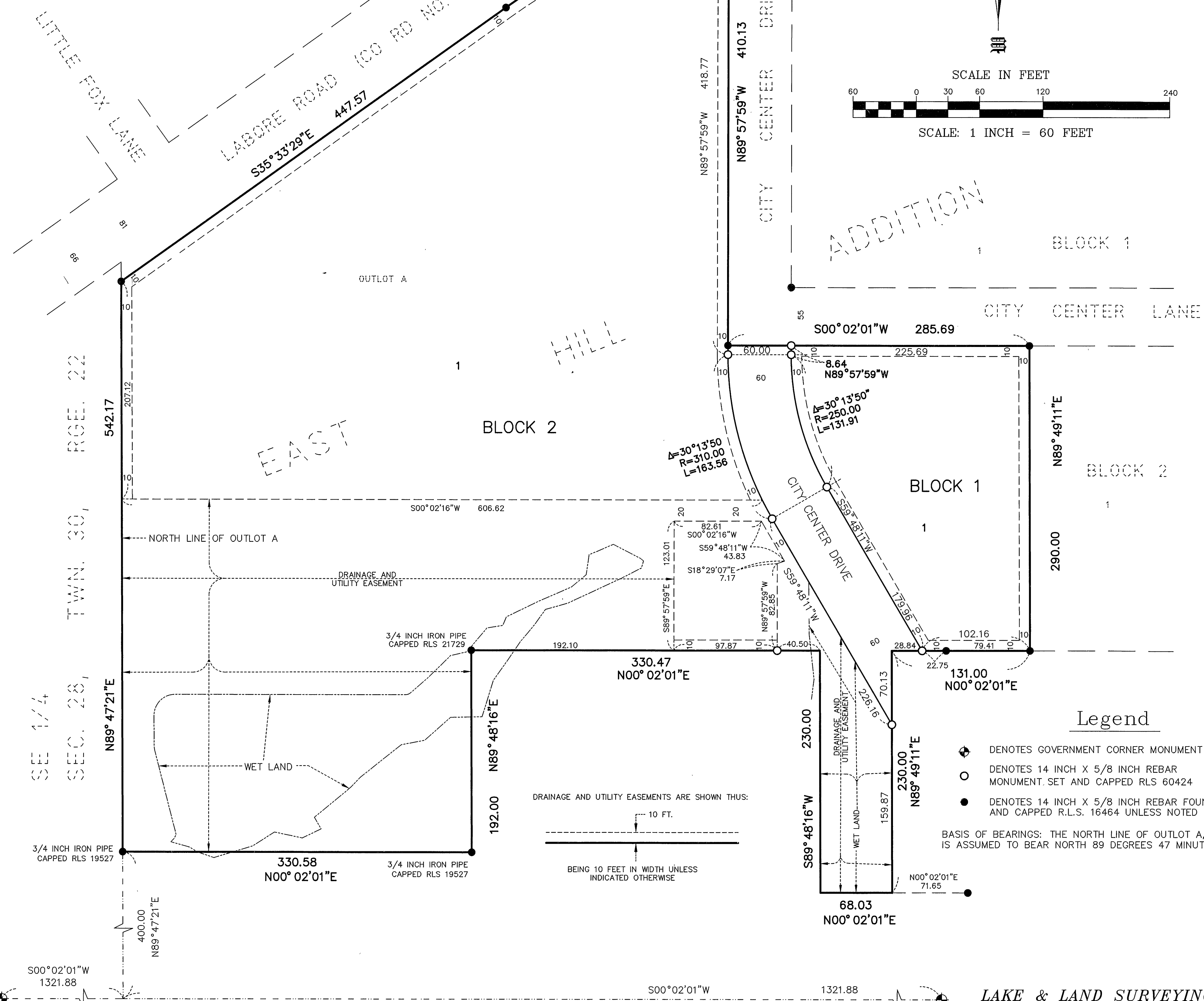
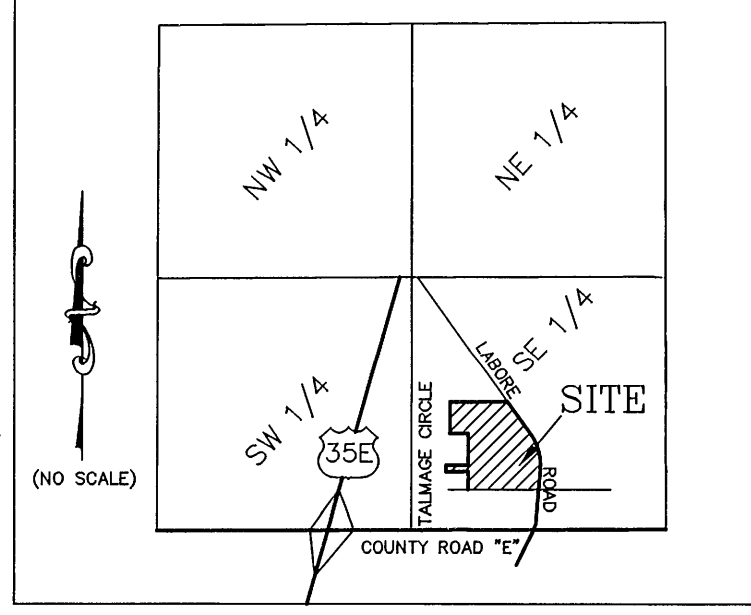


# EAST HILL 2ND ADDITION

## VICINITY MAP

SECTION 28, T. 30N, R. 22W



KNOW ALL PERSONS BY THESE PRESENTS: That Goff Homes, Inc., a Minnesota Corporation, owner of the following described property situated in the City of Vadnais Heights, County of Ramsey, State of Minnesota:

OUTLOT A, EAST HILL ADDITION, Ramsey County, Minnesota.

Has caused the same to be surveyed and platted as EAST HILL 2ND ADDITION and does hereby dedicate to the public for public use the public way and the drainage and utility easements as shown on this plat.

In witness whereof said Goff Homes, Inc. a Minnesota Corporation, has caused these presents to be signed by its proper officers this 22 day of November, 2024.

Signed: Goff Homes, Inc.

Patrick W. Goff  
Patrick W. Goff, President

Carol E. Goff  
Carol E. Goff, Vice President

STATE OF MINNESOTA

COUNTY OF Ramsey

The foregoing instrument was acknowledged before me this 22 day of November, 2024, by Patrick W. Goff, President, and Carol E. Goff, Vice President, of Goff Homes, Inc., a Minnesota Corporation, on behalf of the corporation.

Jessica Currier  
Notary Public, Ramsey County, Minnesota  
My Commission Expires 11-31-29

I, Ryan M. Peterson, Professional Land Surveyor, do hereby certify that I have surveyed or directly supervised the survey of the property described on this plat; prepared this plat or directly supervised the preparation of this plat; that this plat is a correct representation of the boundary survey; that all mathematical data and labels are correctly designated on this plat; that all monuments depicted on this plat have been correctly set; that all water boundaries and wet lands, as defined in Minnesota Statutes, Section 505.01, Subd. 3, as of the date of the surveyor's certification are shown and labeled on this plat; and all public ways are shown and labeled on this plat.

Dated this 12 day of November, 2024.

Ryan M. Peterson  
Ryan M. Peterson, Professional Land Surveyor  
Minnesota License No. 60424

STATE OF MINNESOTA

COUNTY OF Dakota

The foregoing Surveyor's Certificate was acknowledged before me this 12 day of November, 2024, by Ryan M. Peterson, a Licensed Land Surveyor.

Genele Forsham  
Notary Public, Dakota County, Minnesota  
My Commission Expires 1/31/25

City of Vadnais Heights

We do hereby certify that on the 19 day of November, 2024, the City Council of the City of Vadnais Heights, Minnesota, approved this plat. Also, the conditions of Minnesota Statutes, Section 505.03, Subd. 2, have been fulfilled.

Mayor  
City Clerk

Property Tax, Records and Election Services Department

Pursuant to Minnesota Statutes, Section 505.021, Subd. 9, taxes payable in the year 2024 on the land hereinbefore described have been paid. Also, pursuant to Minnesota Statutes, Section 272.12, there are no delinquent taxes and transfer entered this 25th day of NOVEMBER, 2024.

\_\_\_\_\_, Ramsey County Auditor/Treasurer

By \_\_\_\_\_ Deputy

County Surveyor

Pursuant to Minnesota Statutes, Section 383A.42, this plat is approved this 22nd day of NOVEMBER, 2024.

By Stephane J. Robert  
Stephane J. Robert  
Deputy County Surveyor

Daniel D. Baar  
Daniel D. Baar, LS  
Ramsey County Surveyor

County Recorder, County of Ramsey, State of Minnesota

I hereby certify that this plat of EAST HILL 2ND ADDITION was filed in the office of the County Recorder for public record on this 25th day of NOVEMBER, 2024, at 9:00 o'clock A.M. and was duly filed in Book 130 of Plats, Page 45, as Document Number 3047960.

Deputy County Recorder

LAKE & LAND SURVEYING, INC.  
1200 CENTRE POINTE CURVE, STE. 275  
MENDOTA HEIGHTS, MINNESOTA, 55120  
PHONE: 651-776-6211

RAMSEY COUNTY, MINNESOTA, CAST IRON MONUMENT  
CENTER OF SECTION 28, TOWNSHIP 30, RANGE 22

RAMSEY COUNTY, MINNESOTA, CAST IRON MONUMENT SOUTH  
QUARTER CORNER SECTION 28, TOWNSHIP 30, RANGE 22