

DELAWARE PLACE

KNOW ALL PERSONS BY THESE PRESENTS: That Andrus Built LLC, a Minnesota limited liability company, fee owner of the following described property situated in the City of North Saint Paul, County of Ramsey, State of Minnesota:

The south 286.00 feet of the east 650.00 feet of the Southwest Quarter of the Southwest Quarter of Section 1, Township 29, Range 22, Ramsey County, Minnesota, except the south 163.00 feet of the east 340.00 feet of said Southwest Quarter of the Southwest Quarter and except the south 170.00 feet of the west 92.50 feet of the east 432.50 feet of said Southwest Quarter of the Southwest Quarter.

Has caused the same to be surveyed and platted as DELAWARE PLACE and does hereby dedicate to the public for public use forever the public way and drainage and utility easements as shown on this plat.

In witness whereof said Andrus Built LLC, a Minnesota limited liability company, has caused these presents to be signed by its proper officer this 20th day of August, 2024.

Signed: Andrus Built LLC

[Signature]
DOUGLAS ANDRUS / PRESIDENT

STATE OF MINNESOTA
COUNTY OF Pine

The foregoing instrument was acknowledged before me this 22nd day of August, 2024 by Douglas Andrus, president of Andrus Built LLC, a Minnesota limited liability company, on behalf of the company.

Joan C. Mizer (sign)

Joan C. Mizer (print)

Notary Public, Pine County, Minnesota

My Commission expires Jan. 31st 2026

I, Eric R. Vickaryous, Professional Land Surveyor, do hereby certify that I have surveyed or directly supervised the survey of the property described on this plat; prepared this plat or directly supervised the preparation of this plat; that this plat is a correct representation of the boundary survey; that all mathematical data and labels are correctly designated on this plat; that all monuments depicted on this plat have been correctly set; that all monuments indicated on this plat will be correctly set within one year; that all water boundaries and wet lands, as defined in Minnesota Statutes, Section 505.01, Subd. 3, as of the date of the surveyor's certification are shown and labeled on this plat; and all public ways are shown and labeled on this plat.

Dated this 22nd day of August, 2024.

Eric R. Vickaryous
Eric R. Vickaryous, Licensed Land Surveyor
Minnesota License Number 44125

STATE OF MINNESOTA
COUNTY OF PINE

The foregoing instrument was acknowledged before me this 22nd day of August, 2024, by Eric R. Vickaryous, a Professional Land Surveyor.

Joan C. Mizer (print)

Joan C. Mizer (sign)

Notary Public, PINE County, Minnesota

My Commission expires JAN. 31st, 2026

City Council, North Saint Paul, Minnesota

We hereby certify that this plat was approved by the City Council of North Saint Paul, Minnesota, on the 22 day of August, 2024.

[Signature], Mayor Brian Trankle, Clerk

Property Tax, Records and Election Services Department, Ramsey County, Minnesota

Pursuant to Minnesota Statutes, Section 505.021, Subd. 9, taxes payable in the year 2024 on the land hereinbefore described have been paid.

Also, pursuant to Minnesota Statutes, Section 272.12, there are no delinquent taxes and transfer entered this 27th day of August, 2024.

_____, Ramsey County Auditor/Treasurer

By _____, Deputy

County Surveyor

Pursuant to Minnesota Statutes, Section 383A.42, this plat is approved this 27th day of August, 2024.

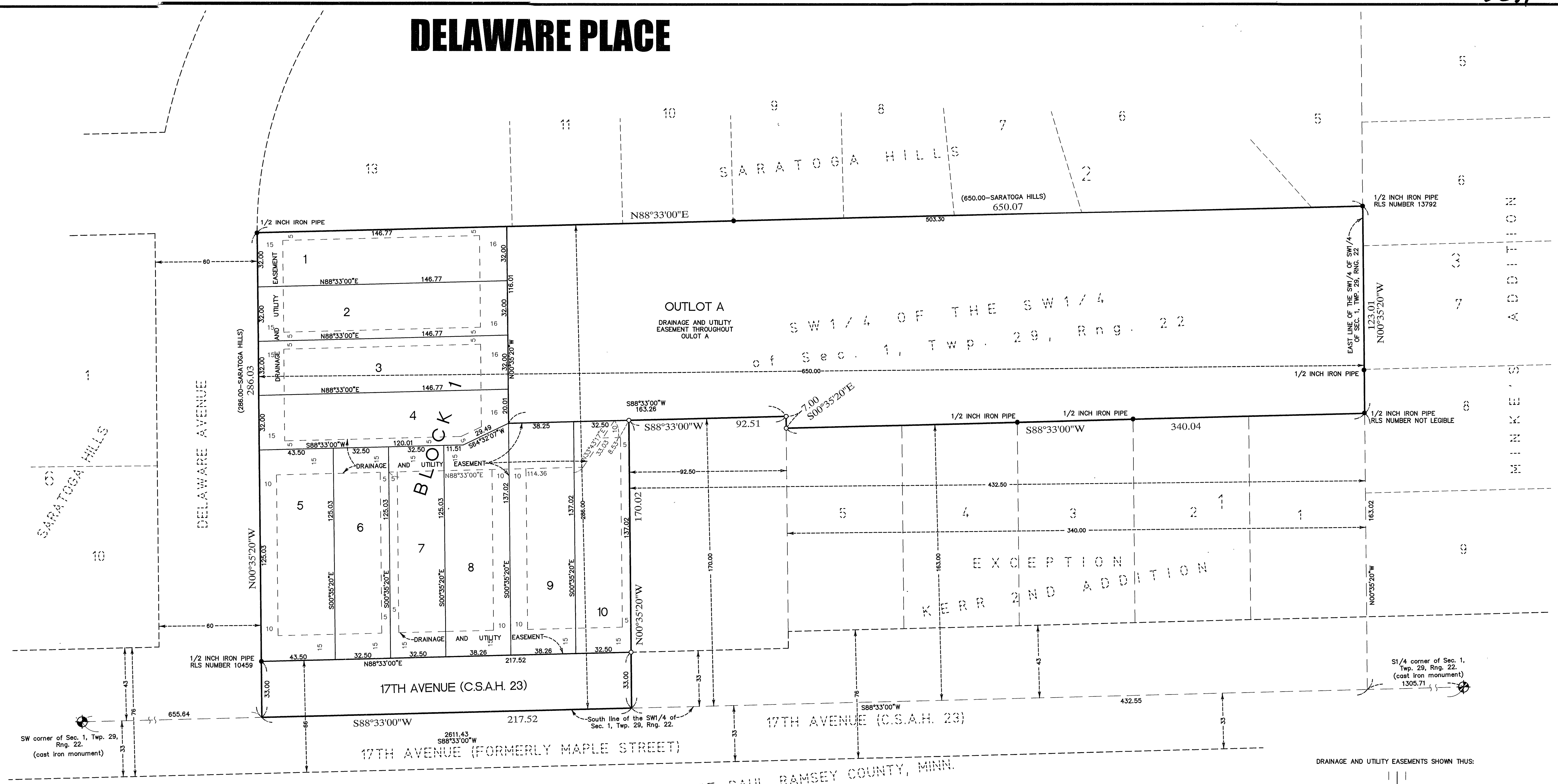
[Signature]
Daniel D. Baar, L.S.
Ramsey County Surveyor

County Recorder, County of Ramsey, State of Minnesota

I hereby certify that this plat of DELAWARE PLACE was filed in the office of the County Recorder for public record on this 5th day of September, 2024, at 10:30 o'clock A.M. and was duly filed in Book 130 of Plats, Pages 39 and 40, as Document Number 5037629.

Deputy County Recorder

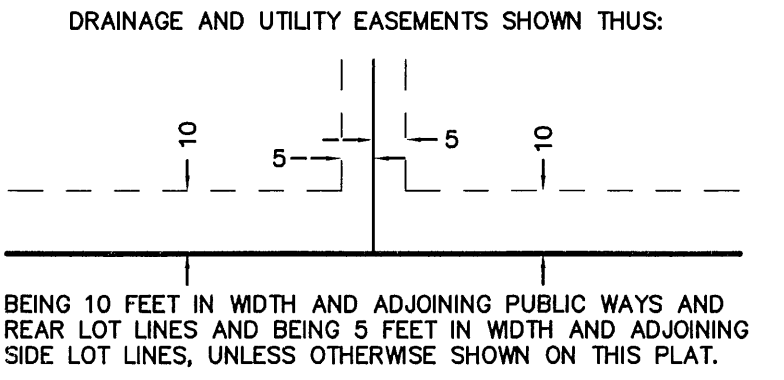
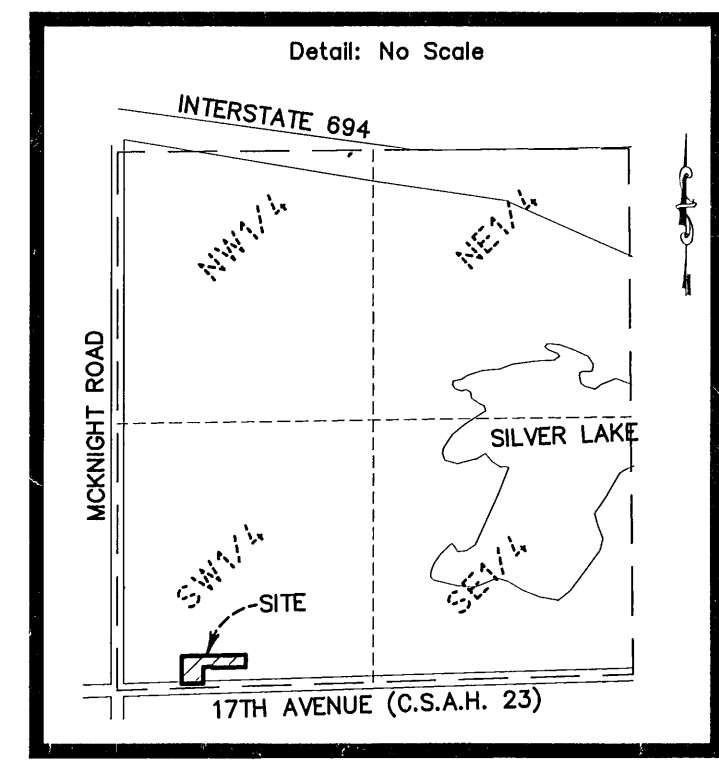
DELAWARE PLACE



SW corner of Sec. 1, Twp. 29, Rng. 22. (cast iron monument)

S1/4 corner of Sec. 1, Twp. 29, Rng. 22. (cast iron monument) 1305.71

FOURTH ADDITION TO NORTH ST. PAUL, RAMSEY COUNTY, MINN.
VICINITY MAP
 SECTION 1, TOWNSHIP 29, RANGE 22



- LEGEND**
- Denotes 1/2 inch by 14-inch iron pipe monument set and marked by License No. 44125.
 - Denotes found iron monument as specified
 - ⊙ DENOTES CAST IRON MONUMENT

Any required interior monument location on this plat with no monument symbol shown, indicates an interior plat monument that will be set, and which shall be in place within one year after the recording of this plat and will be marked by a 1/2 inch by 14-inch iron pipe monument set and marked by License No. 44125.

The orientation of this bearing system is based on the south line of SW1/4 of Sec. 1, Twp. 29, Rng. 22, which is assumed to bear S88°33'00"W.

