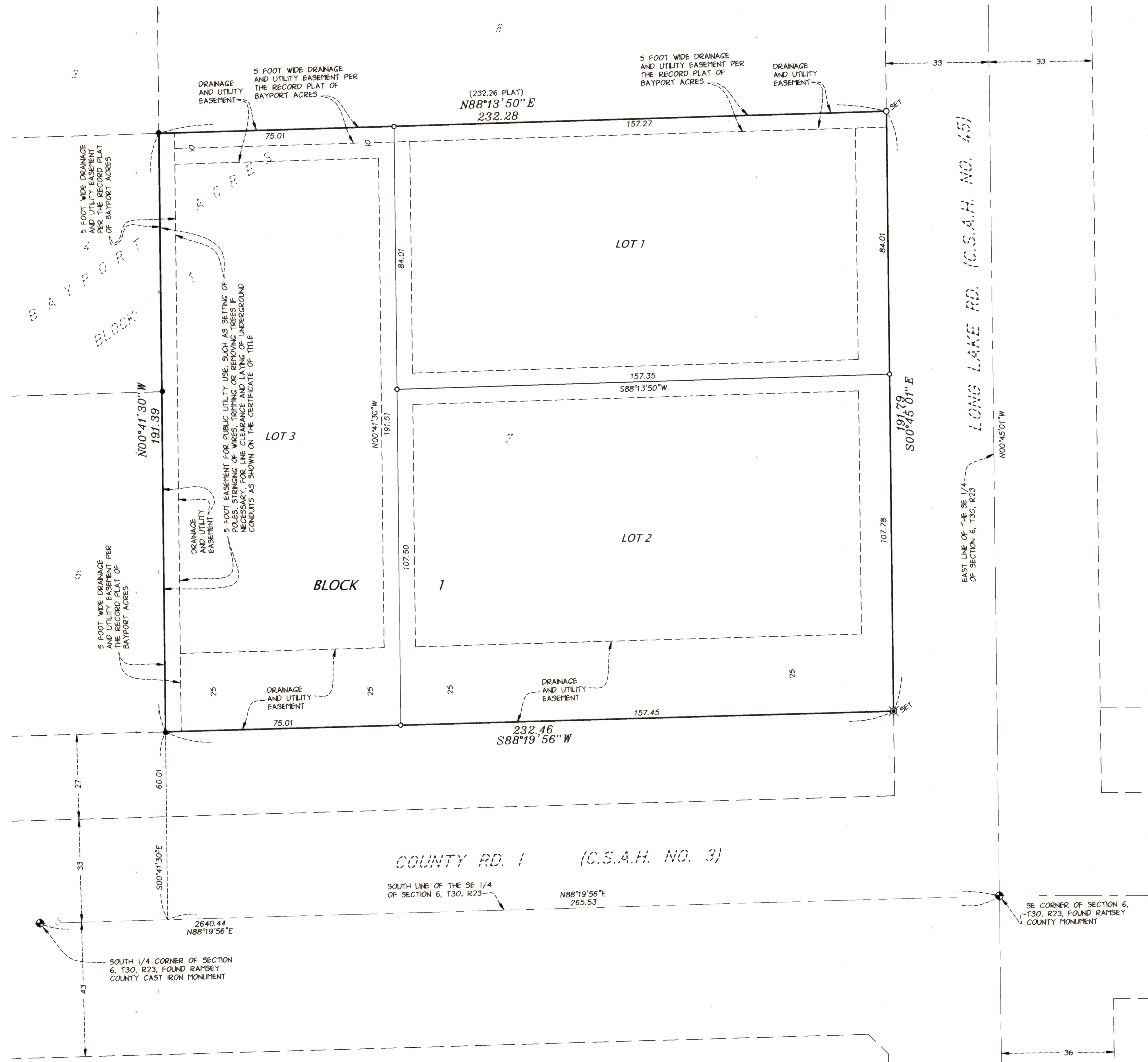


LONG LAKE COVE

COPY

5276



- LEGEND**
- Denotes 1/2 inch x 14 inch iron pipe marked with Minnesota License No. 25718 to be set within one year after recording of this plat.
 - Denotes 1/2 inch x 14 inch iron pipe set and marked with Minnesota License No. 25718.
 - ⊙ Denotes found 1/2 inch iron pipe.
 - Denotes distance as shown on the Plat of BAYPORT ACRES.



FOR THE PURPOSES OF THIS SURVEY THE SOUTH LINE OF THE SE 1/4 OF SEC. 6, T30N, R23W IS ASSUMED TO BEAR N88°19'56\"/>

KNOW ALL PERSONS BY THESE PRESENTS: That TWIN CITIES HOLDING COMPANY, LLC, a Minnesota limited liability company, owner of the following described property situated in the City of Mounds View, County of Ramsey, State of Minnesota:

Lot 7, Block 1, BAYPORT ACRES, Ramsey County, Minnesota.

Has caused the same to be surveyed and platted as LONG LAKE COVE and does hereby dedicate to the public for public use forever the easements for drainage and utility purposes only as shown on this plat.

In witness whereof said TWIN CITIES HOLDING COMPANY, LLC, a Minnesota limited liability company, has caused these presents to be signed by its proper officer this 11th day of October, 2023.

Signed: TWIN CITIES HOLDING COMPANY, LLC, a Minnesota limited liability company.

Clyde F. Wagner
President

STATE OF Minnesota
COUNTY OF Washington
The foregoing instrument was acknowledged before me this 11th day of October, 2023 by Clyde F. Wagner, President of TWIN CITIES HOLDING COMPANY, LLC, a Minnesota limited liability company, on behalf of the company.

Notary Public, Dakota County, Minnesota
My Commission Expires Jan. 31, 2025

I, Daniel L. Thurmes, do hereby certify that I have surveyed or directly supervised the survey of the property described on this plat; prepared this plat or directly supervised the preparation of this plat; that this plat is a correct representation of the boundary survey; that all mathematical data and labels are correctly designated on this plat; that all monuments depicted on this plat have been correctly set; that all monuments indicated on this plat will be correctly set within one year; that all water boundaries and wet lands, as defined in Minnesota Statutes, Section 505.01, Subd. 3, as of the date of this surveyor's certification are shown and labeled on this plat; and all public ways are shown and labeled on this plat.

Dated this 11th day of October, 2023.

Daniel L. Thurmes, Land Surveyor
Minnesota License No. 25718

STATE OF MINNESOTA
COUNTY OF Washington
The foregoing instrument was acknowledged before me this 11th day of October, 2023, by Daniel L. Thurmes, Licensed Land Surveyor.

Notary Public, Dakota County, Minnesota
My Commission Expires Jan. 31, 2025

CITY OF MOUNDS VIEW
We do hereby certify that on the 12th day of October, 2023, the City Council of the City of Mounds View, Minnesota, approved this plat. Also, the conditions of Minnesota Statutes Section 505.03, Subd. 2, have been fulfilled.

Mayor

Clerk

PROPERTY TAX, RECORDS, AND ELECTION SERVICES DEPARTMENT
Pursuant to Minnesota Statutes, Section 505.021, Subd. 9, taxes payable in the year 20 on the land hereinbefore described have been paid. Also, pursuant to Minnesota Statutes, Section 272.12, there are no delinquent taxes and transfer entered this day of , 20 .

By _____, Deputy

COUNTY SURVEYOR
Pursuant to Minnesota Statutes, Section 383A.42, this plat is approved this 13th day of OCTOBER, 2023.

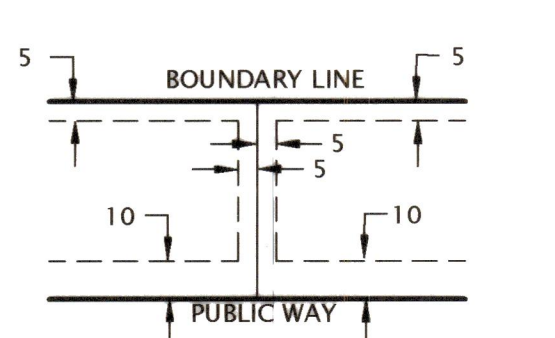
DANIEL D. BAAR
Ramsey County Surveyor

STEPHANE J. ROBERT
DEPUTY COUNTY SURVEYOR

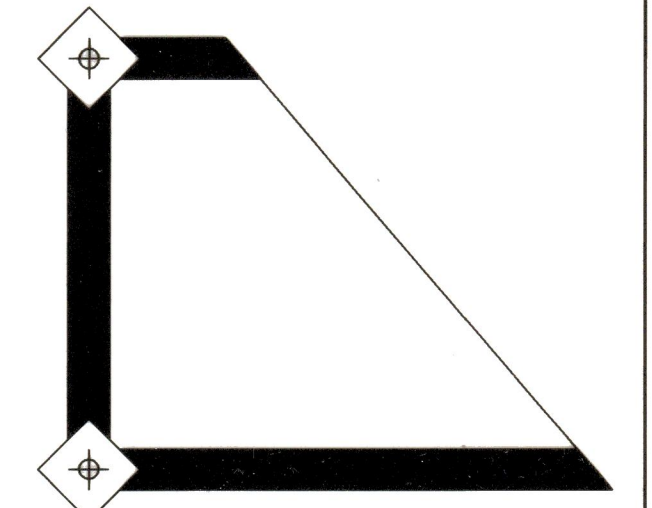
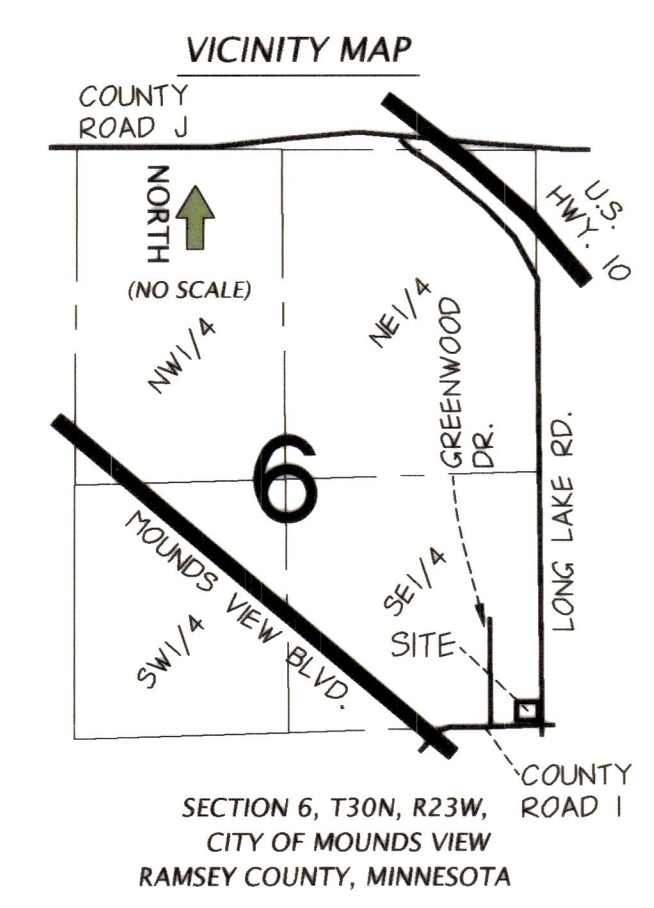
REGISTRAR OF TITLES, County of Ramsey, State of Minnesota
I hereby certify that this plat of LONG LAKE COVE was filed in the office of the Registrar of Titles for public record on this 13 day of October, 2023, at 2:00 o'clock P.M. and was duly filed in Book 51 of Plats, Page 4, as Document Number 2763166.

Deputy Registrar of Titles

DRAINAGE AND UTILITY EASEMENTS ARE SHOWN AS THUS:



BEING 10 FEET IN WIDTH AND ADJOINING PUBLIC WAYS AND 5 FEET IN WIDTH AND ADJOINING LOT LINES AND PLAT BOUNDARIES UNLESS OTHERWISE SHOWN ON THIS PLAT.



CORNERSTONE
LAND SURVEYING, INC.