

# SHOREVIEW CORPORATE CENTER THIRD ADDITION

KNOW ALL PERSONS BY THESE PRESENTS: That Shoreview Ridge Office LLC, a Minnesota limited liability company, owner of the following described property situated in the City of Shoreview, County of Ramsey, State of Minnesota:

Lot 2, Block 1, SHOREVIEW CORPORATE CENTER SECOND ADDITION, according to the recorded plat thereof, Ramsey County, Minnesota.

Has caused the same to be surveyed and platted as SHOREVIEW CORPORATE CENTER THIRD ADDITION and does hereby dedicate to the public for public use the drainage and utility easements as shown on this plat.

In witness whereof said Shoreview Ridge Office LLC, a Minnesota Limited Liability Company, has caused these presents to be signed by its proper officer this 23rd day of January, 2023.

SIGNED: Shoreview Ridge Office LLC, a Minnesota limited liability company

*Shannon Van Gorn*  
SIGNATURE  
Shannon Van Gorn, its Authorized Person

STATE OF Minnesota  
COUNTY OF Ramsey

The foregoing instrument was acknowledged before me this 23rd day of January, 2023, by Shannon Van Gorn, the Authorized Person of Shoreview Ridge Office LLC, a Minnesota limited liability company, on behalf of said company.

*Maxwell Patrick Minca*  
Notary Public Ramsey County, Minnesota  
My commission expires January 31, 2026

I, Lee J. Nord, Licensed Land Surveyor, do hereby certify that I have surveyed or directly supervised the survey of the property described on this plat; prepared this plat or directly supervised the preparation of this plat; that this plat is a correct representation of the boundary survey; that all mathematical data and labels are correctly designated on this plat; that all monuments depicted on this plat have been correctly set; that all monuments indicated on this plat will be correctly set within one year; that all water boundaries and wet lands, as defined in Minnesota Statutes, Section 505.01, Subd. 3, as of the date of the surveyor's certification are shown and labeled on this plat; and all public ways are shown and labeled on this plat.

Dated this 20th day of January, 2023.

*Lee J. Nord*  
Lee J. Nord, Land Surveyor  
Minnesota License No. 22033

STATE OF MINNESOTA

COUNTY OF Ramsey

This instrument was acknowledged before me this 20th day of January, 2023, by Lee J. Nord, Land Surveyor, Minnesota License No. 22033.

*Nicholas C. Pennus*  
Signature

*Nicholas C. Pennus*  
Printed

Notary Public Ramsey County, Minnesota

My commission expires January 31, 2026

CITY OF SHOREVIEW, MINNESOTA

We do hereby certify that on the 18th day of July, 2022, the City Council of the City of Shoreview, Minnesota, approved this plat. Also, the conditions of Minnesota Statutes, Section 505.03, Subd. 2, have been fulfilled.

*Brian Morten*, Clerk

*Lisa A. Decker*, Mayor

PROPERTY TAX, RECORDS AND ELECTION SERVICES DEPARTMENT

Pursuant to Minnesota Statutes, Section 505.021, Subd. 9, taxes payable in the year \_\_\_\_\_ on the land hereinbefore described have been paid. Also pursuant to Minnesota Statutes, Section 272.12, there are no delinquent taxes and transfer entered this \_\_\_\_\_ day of \_\_\_\_\_, 202\_\_.

Heather L. Bestler, Ramsey County Auditor/Treasurer

by \_\_\_\_\_ Deputy

COUNTY SURVEYOR

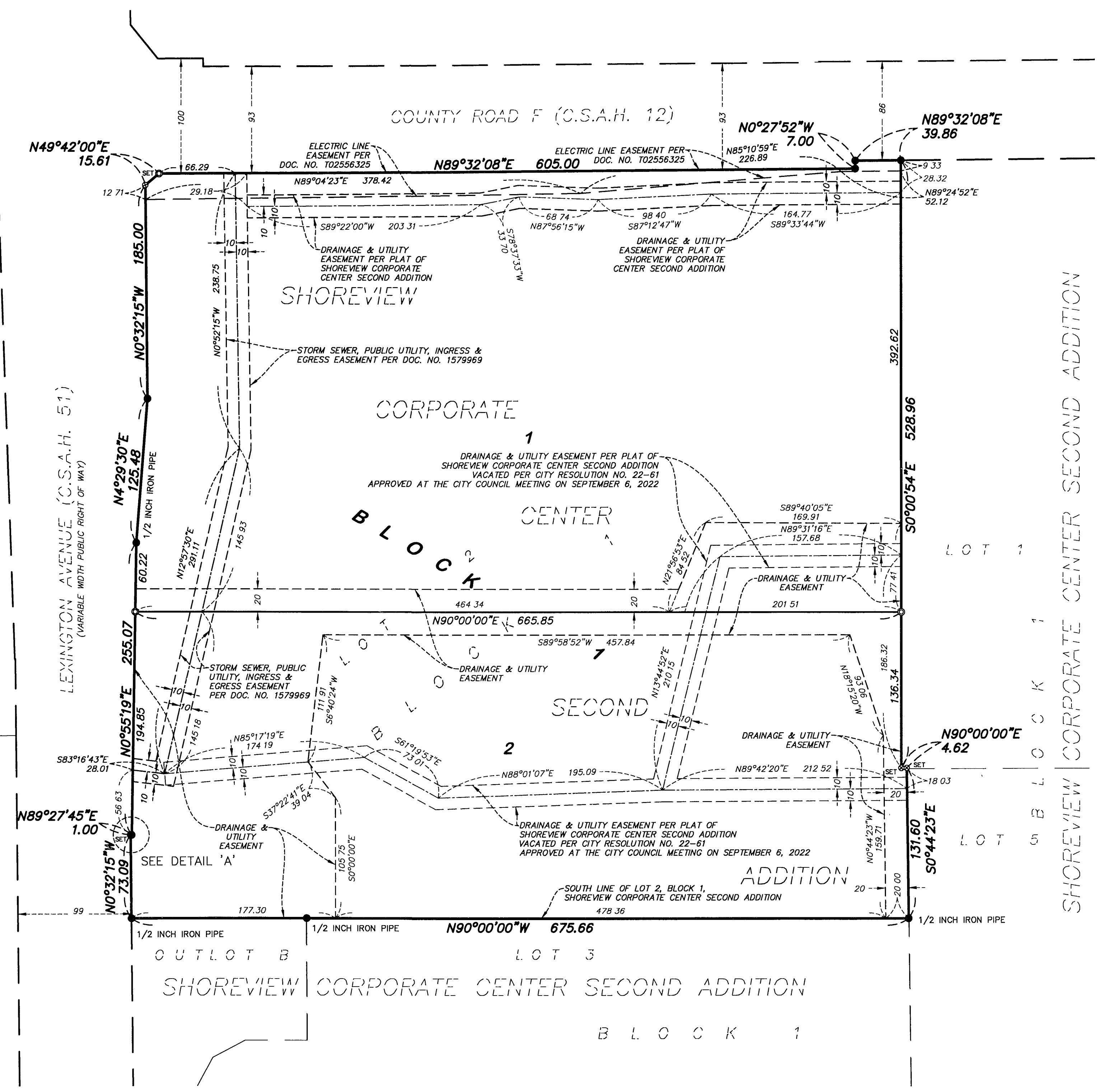
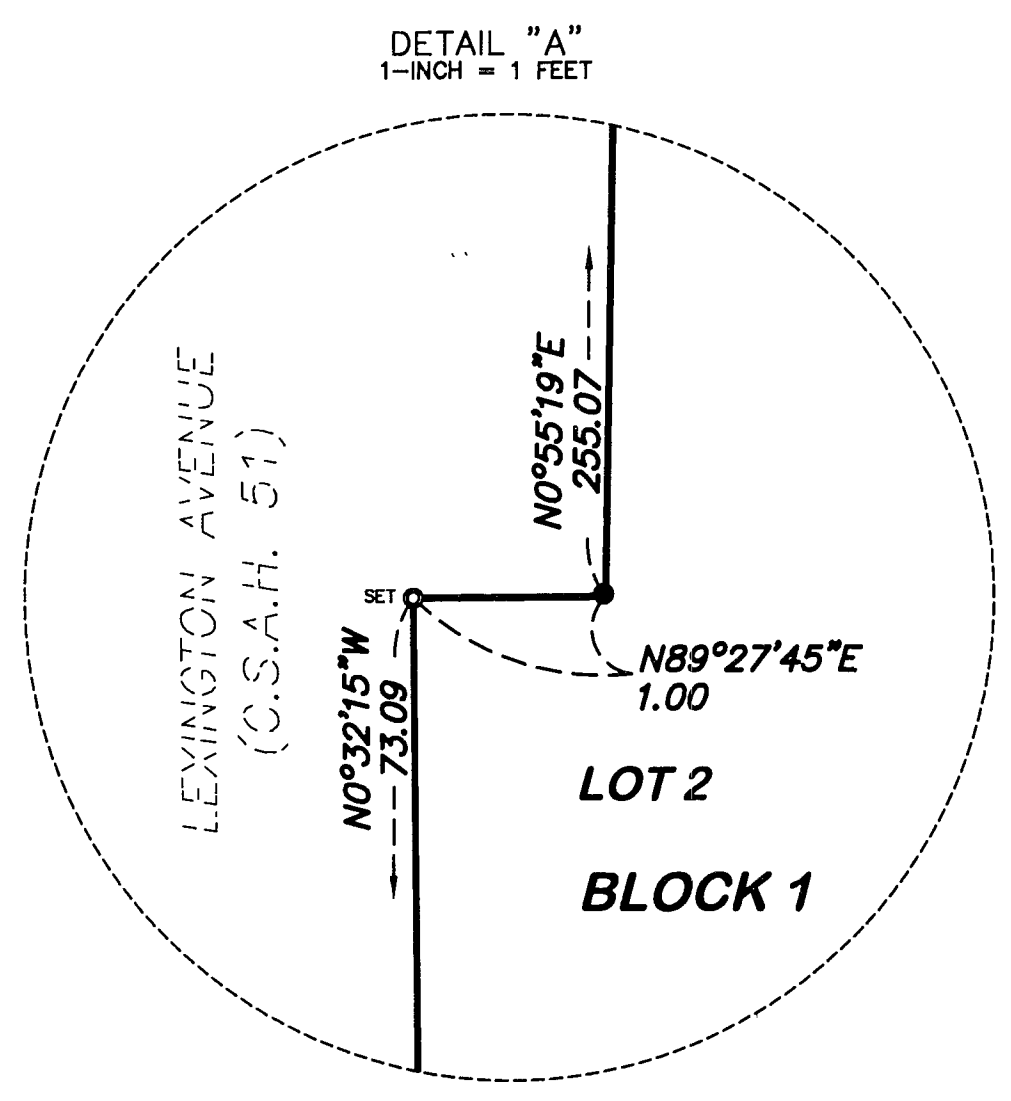
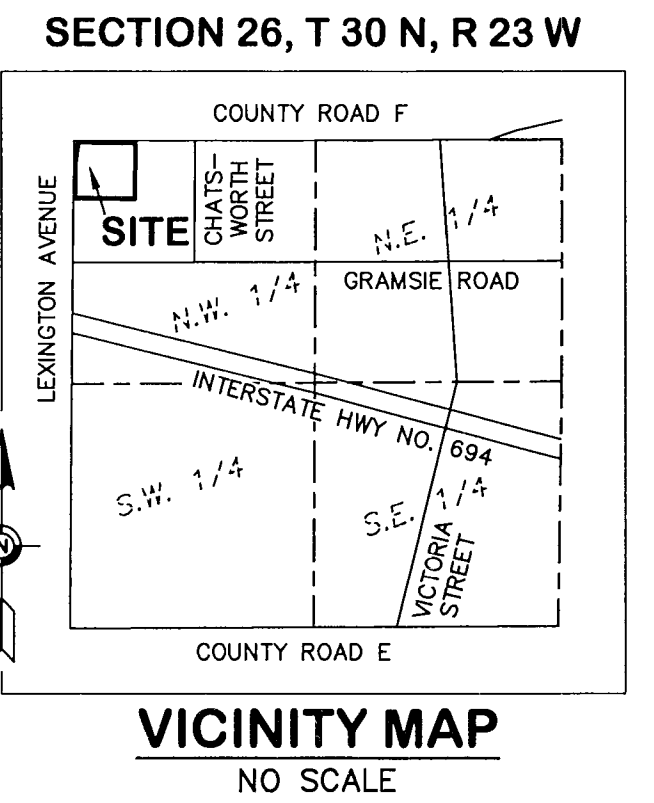
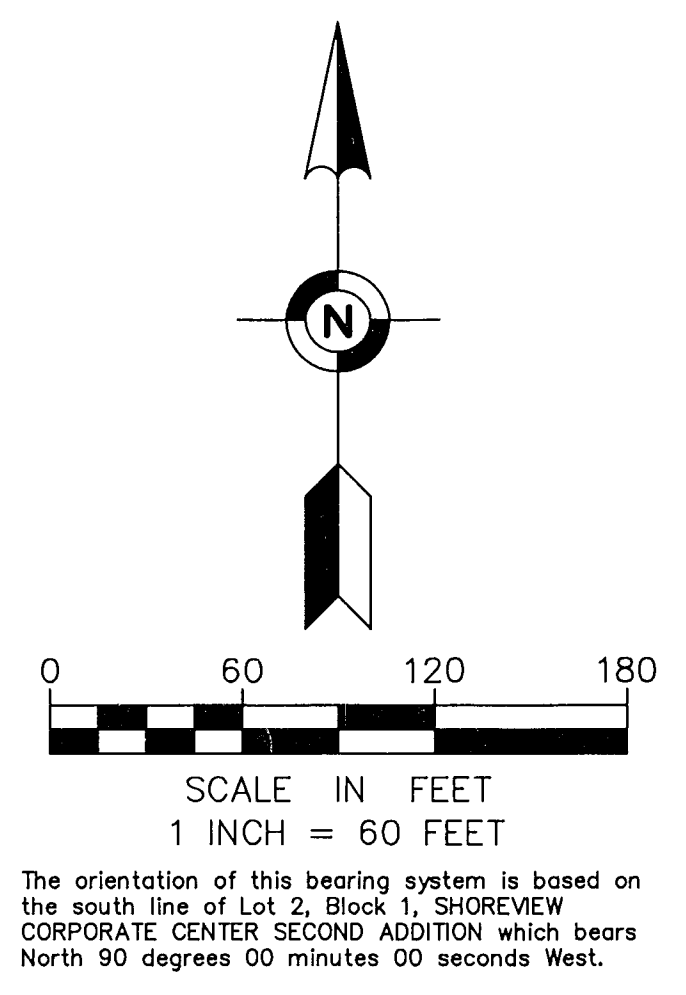
Pursuant to Minnesota Statutes, Section 383A.42, this plat is approved this 9th day of February, 2023.

*Daniel D. Baar* by: *Stephane J. Robert*  
Daniel D. Baar, L.S. Stephane J. Robert  
Ramsey County Surveyor Deputy County Surveyor

REGISTRAR OF TITLES, COUNTY OF RAMSEY, STATE OF MINNESOTA

I hereby certify that this plat of SHOREVIEW CORPORATE CENTER THIRD ADDITION was filed in the office of the Registrar of Titles for public record on this 14th day of March, 2023, at 12:00 o'clock P.M. and was duly filed in Book 63 of Plats, Page 34, as Document Number 2750997.

Deputy Registrar of Titles



- FOUND 1/2-INCH IRON PIPE MARKED WITH LICENSE NUMBER 44565, UNLESS OTHERWISE NOTED
- FOUND PK NAIL
- SET 5/8-INCH X 14-INCH REBAR WITH CAP MARKED L.S. 22033
- SET 5/8-INCH X 14-INCH REBAR WITH CAP MARKED L.S. 22033 (TO BE SET WITHIN ONE YEAR AFTER THIS PLAT IS RECORDED)
- SET SET PK NAIL MARKED L.S. 22033

