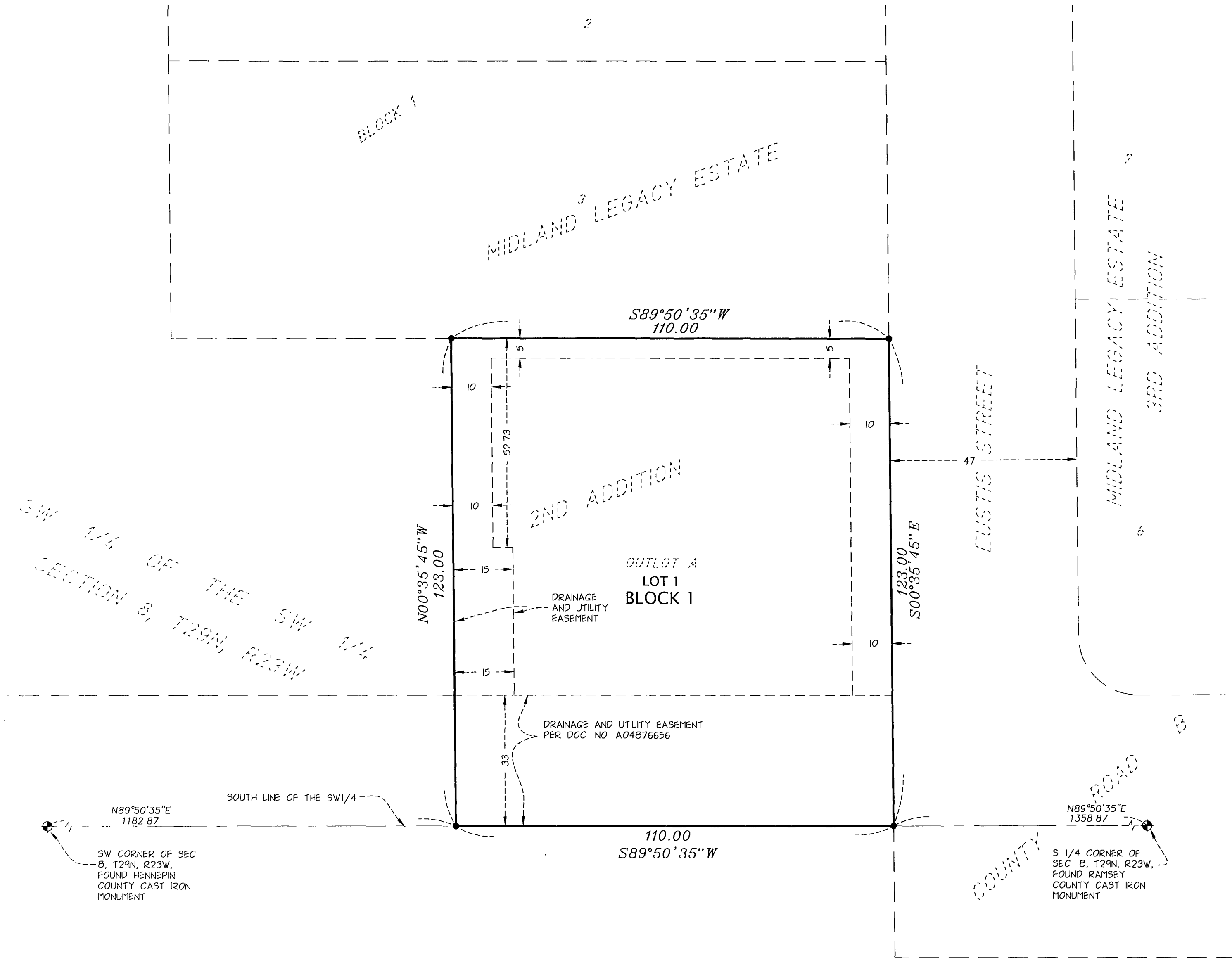


# MIDLAND LEGACY ESTATE 5TH ADDITION



KNOW ALL PERSONS BY THESE PRESENTS That Integrity Land Development, Inc., a Minnesota corporation, owner of the following described property situated in the City of Roseville, County of Ramsey, State of Minnesota:

OUTLOT A, MIDLAND LEGACY ESTATE 2ND ADDITION, Ramsey County, Minnesota,

Has caused the same to be surveyed and platted as MIDLAND LEGACY ESTATE 5TH ADDITION and does hereby dedicate to the public for public use forever the easements for drainage and utility purposes only as shown on this plat.

In witness whereof said Integrity Land Development, Inc., a Minnesota corporation, has caused these presents to be signed by its proper officer this 16th day of February, 2023

Signed Integrity Land Development, Inc., a Minnesota corporation

*Todd D. Ganz*  
Todd D. Ganz, president

STATE OF Minnesota  
COUNTY OF Washington

The foregoing instrument was acknowledged before me this 26th day of Jan, 2023 by Todd D. Ganz, president of Integrity Land Development, Inc., a Minnesota corporation, on behalf of the corporation.

*Connie J.P. Villari*  
(signature)  
Connie J.P. Villari  
(printed name)

Notary Public, Dakota County, Minnesota  
My Commission Expires Jan. 31, 2025

I, Daniel L. Thurmes, do hereby certify that I have surveyed or directly supervised the survey of the property described on this plat, prepared this plat or directly supervised the preparation of this plat, that this plat is a correct representation of the boundary survey, that all mathematical data and labels are correctly designated on this plat, that all monuments depicted on this plat have been correctly set, that all monuments indicated on this plat are correctly shown, that there are no water boundaries or wet lands, as defined in Minnesota Statutes, Section 505.01, Subd. 3, as of the date of this surveyor's certification shown and labeled on this plat; and all public ways are shown and labeled on this plat.

Dated this 16th day of Jan, 2023

*D.L. Thurmes*  
Daniel L. Thurmes, Land Surveyor  
Minnesota License No. 25718

STATE OF MINNESOTA  
COUNTY OF Washington  
The foregoing instrument was acknowledged before me this 16th day of Jan, 2023 by Daniel L. Thurmes, Licensed Land Surveyor.

*Connie J.P. Villari* *Connie J.P. Villari*  
(signature) (signature)  
Connie J.P. Villari (printed name)

Notary Public, Dakota County, Minnesota  
My Commission Expires Jan. 31, 2025

CITY OF ROSEVILLE  
We do hereby certify that on the 17th day of January, 2023, the City Council of the City of ROSEVILLE, Minnesota, approved this plat.

*[Signature]*  
Mayor  
*[Signature]*  
Clerk

PROPERTY TAX, RECORDS, AND ELECTION SERVICES DEPARTMENT  
Pursuant to Minnesota Statutes, Section 505.021, Subd. 9, taxes payable in the year 2023 on the land hereinbefore described have been paid. Also, pursuant to Minnesota Statutes, Section 272.12, there are no delinquent taxes and transfer entered this 9th day of February, 2023

Heather L. Bestler, Ramsey County Auditor/Treasurer

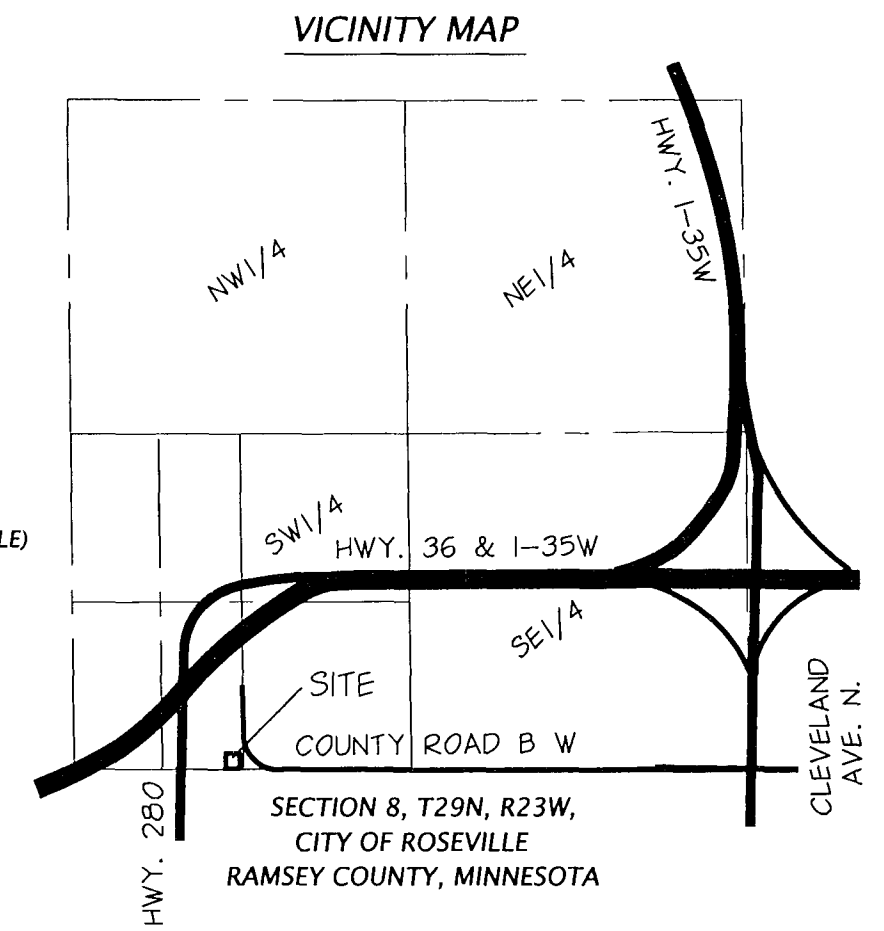
By \_\_\_\_\_, Deputy

COUNTY SURVEYOR  
Pursuant to Minnesota Statutes, Section 383A.42, this plat is approved this 7th day of FEBRUARY, 2023

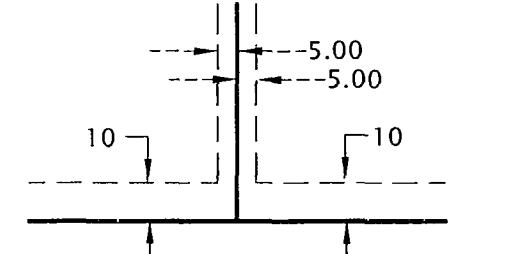
DANIEL D. BAAR BY: *[Signature]*  
Daniel D. Baar  
Ramsey County Surveyor  
STEPHANE J. ROBERT  
DEPUTY COUNTY SURVEYOR

COUNTY RECORDER, County of Ramsey, State of Minnesota  
I hereby certify that this plat of MIDLAND LEGACY ESTATE 5TH ADDITION was filed in the office of the County Recorder for public record on this 9th day of FEBRUARY, 2023, at 9:15 o'clock A.M. and was duly filed in Book 130 of Plats, Page 17, as Document Number 4985043

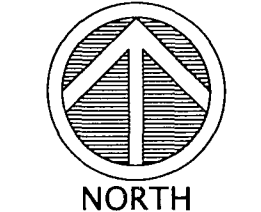
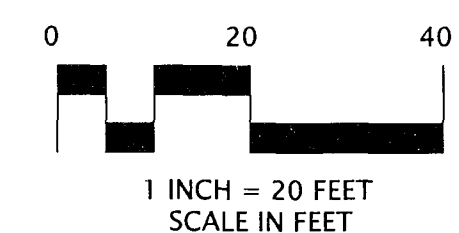
Deputy County Recorder



DRAINAGE AND UTILITY EASEMENTS ARE SHOWN AS THUS (NOT TO SCALE)

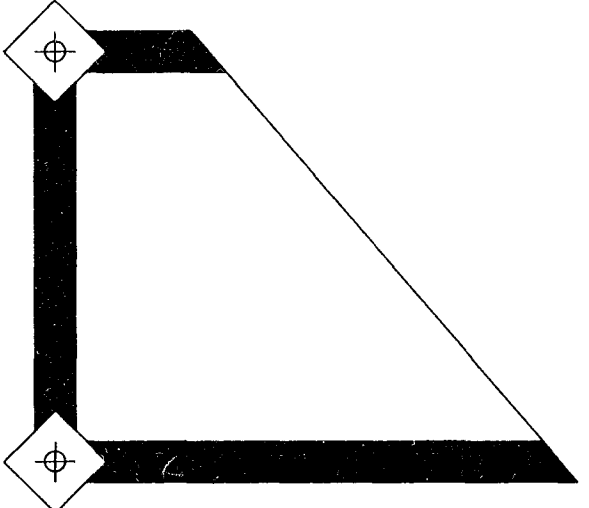


BEING 10 FEET IN WIDTH AND ADJOINING PUBLIC WAYS AND BEING 5.00 FEET IN WIDTH AND ADJOINING LOT LINES UNLESS OTHERWISE SHOWN ON THIS PLAT



FOR THE PURPOSES OF THIS SURVEY THE SOUTH LINE OF THE SW 1/4 OF SEC. 8, T29N, R23W IS ASSUMED TO BEAR N89°50'35\"/>

- LEGEND
- Denotes found 1/2 inch x 14 inch iron pipe marked with Minnesota License No. 25718.



CORNERSTONE  
LAND SURVEYING, INC.