

TWIN LAKES 4TH ADDITION

KNOW ALL PERSONS BY THESE PRESENTS: That Roseville Investment Partners, LLC, a Minnesota limited liability company, owner of the following described property situated in the City of Roseville, County of Ramsey, State of Minnesota:

OUTLOT A, TWIN LAKES 3RD ADDITION, according to the recorded plat thereof, Ramsey County, Minnesota.

Has caused the same to be surveyed and platted as TWIN LAKES 4TH ADDITION and does hereby dedicate to the public for public use forever the drainage and utility easements as created by this plat.

In witness whereof said Roseville Investment Partners, LLC, a Minnesota Limited Liability Company, has caused these presents to be signed by its proper officer this 19th day of May, 2022.

SIGNED: Roseville Investment Partners, LLC, a Minnesota limited liability company
By: Launch Roseville Holdings, LLC, a Minnesota limited liability company.

SIGNATURE

Daniel O. Regan, its Manager.

STATE OF Minnesota
COUNTY OF Washington

The foregoing instrument was acknowledged before me this 19th day of May, 2022, by Daniel O. Regan, the Manager of Launch Roseville Holdings, LLC, a Minnesota limited liability company, the manager of Roseville Investment Partners, LLC, a Minnesota limited liability company, on behalf of said company.

[Signature]
Notary Public Washington County, Minnesota
My commission expires 1/31/2025

I, Christopher A. Terwedo, Licensed Land Surveyor, do hereby certify that I have surveyed or directly supervised the survey of the property described on this plat; prepared this plat or directly supervised the preparation of this plat; that this plat is a correct representation of the boundary survey; that all mathematical data and labels are correctly designated on this plat; that all monuments depicted on this plat have been correctly set; that all monuments indicated on this plat will be correctly set within one year; that all water boundaries and wet lands, as defined in Minnesota Statutes, Section 505.01, Subd. 3, as of the date of the surveyor's certification are shown and labeled on this plat; and all public ways are shown and labeled on this plat.

Dated this 18th day of MAY, 2022.

[Signature]
Christopher A. Terwedo, Land Surveyor
Minnesota License No. 53536

STATE OF MINNESOTA

COUNTY OF Ramsey

This instrument was acknowledged before me this 18th day of May, 2022, by Christopher A. Terwedo, Land Surveyor, Minnesota License No. 53536.

[Signature]
Signature
Nicholas C. Pennus
Printed
Notary Public Ramsey County, MINNESOTA
My commission expires JANUARY 31, 2026

CITY OF ROSEVILLE, MINNESOTA

We do hereby certify that on the 11 day of April, 2022, the City Council of the City of Roseville, Minnesota, approved this plat. Also, the conditions of Minnesota Statutes, Section 505.03, Subd. 2, have been fulfilled.

[Signature] Clerk
[Signature] Mayor

PROPERTY TAX, RECORDS AND ELECTION SERVICES DEPARTMENT

Pursuant to Minnesota Statutes, Section 505.021, Subd. 9, taxes payable in the year 2022 on the land hereinbefore described have been paid. Also pursuant to Minnesota Statutes, Section 272.12, there are no delinquent taxes and transfer entered this 7th day of JUNE, 2022.

Heather L. Bestler, Ramsey County Auditor/Treasurer

by _____, Deputy

COUNTY SURVEYOR

Pursuant to Minnesota Statutes, Section 383A.42, this plat is approved this 6th day of JUNE, 2022.

DANIEL D. BAAR
Daniel D. Baar, L.S.
Ramsey County Surveyor
BY: [Signature]
STEPHANE J. ROBERT
DEPUTY COUNTY SURVEYOR

COUNTY RECORDER, COUNTY OF RAMSEY, STATE OF MINNESOTA

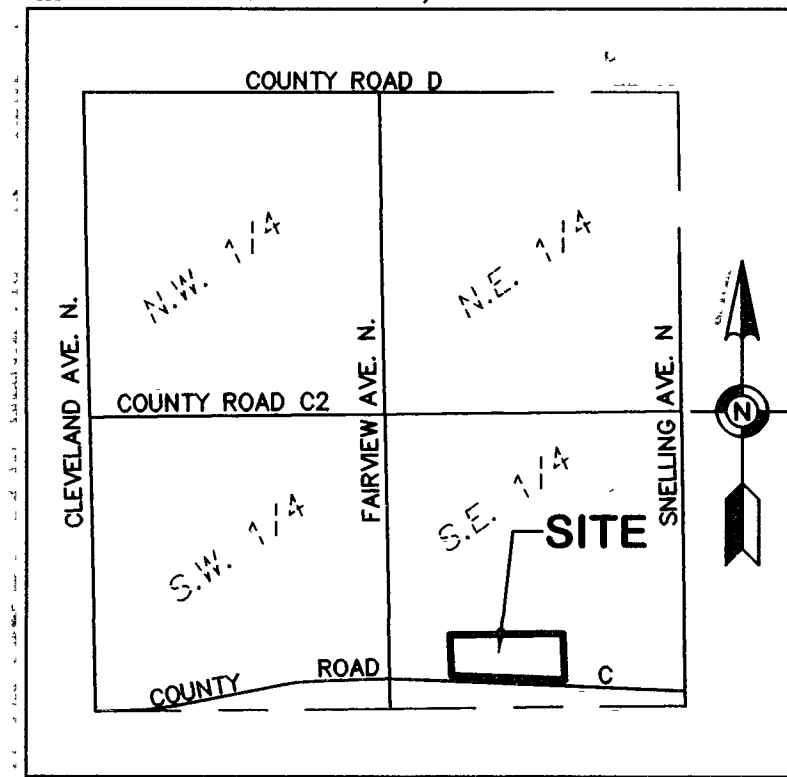
I hereby certify that this plat of TWIN LAKES 4TH ADDITION was filed in the office of the County Recorder for public record on this 17th day of JUNE, 2022, at 2:00 o'clock P.M. and was duly filed in Book 130 of Plats, Pages 7 and 8, as Document Number 4950728.

Deputy County Recorder

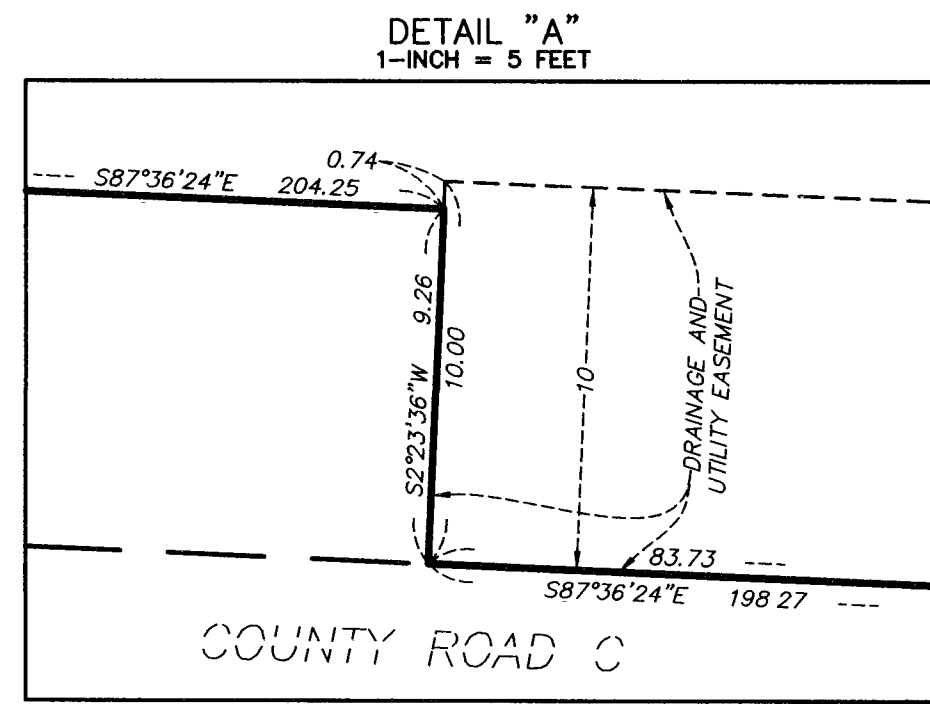


TWIN LAKES 4TH ADDITION

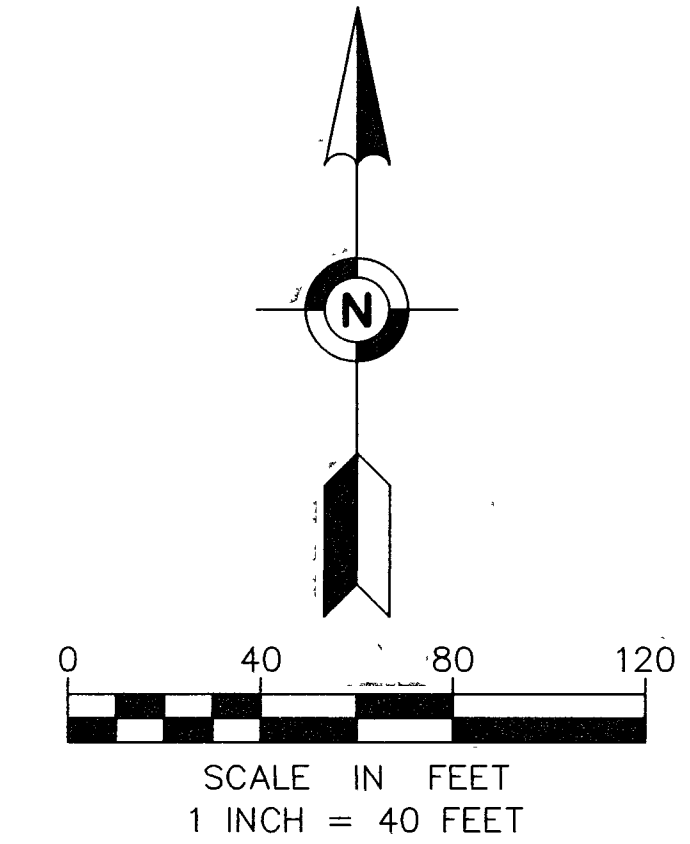
SECTION 4
TOWNSHIP 29N, RANGE 23W



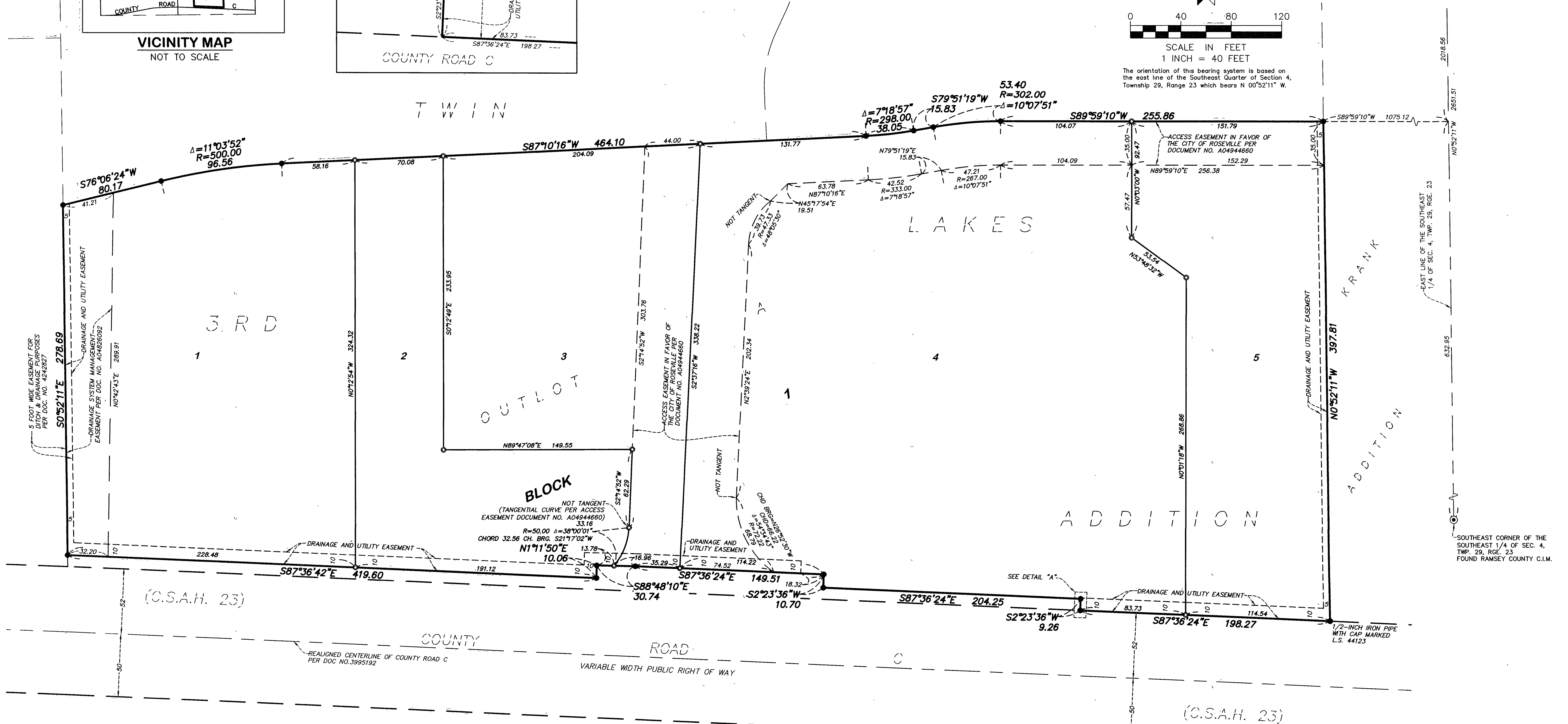
VICINITY MAP
NOT TO SCALE



- FOUND 5/8-INCH REBAR MARKED WITH LICENSE NUMBER 53536, UNLESS OTHERWISE NOTED
- SET 5/8-INCH X 14-INCH REBAR WITH CAP MARKED L.S. 53536 (TO BE SET WITHIN ONE YEAR AFTER THIS PLAT IS RECORDED)



The orientation of this bearing system is based on the east line of the Southeast Quarter of Section 4, Township 29, Range 23 which bears N 00°52'11" W.



NORTHEAST CORNER OF THE SOUTHEAST 1/4 OF SEC. 4, TWP. 29, RGE. 23 FOUND RAMSEY COUNTY C.I.M.

EAST LINE OF THE SOUTHEAST 1/4 OF SEC. 4, TWP. 29, RGE. 23

SOUTHEAST CORNER OF THE SOUTHEAST 1/4 OF SEC. 4, TWP. 29, RGE. 23 FOUND RAMSEY COUNTY C.I.M.