

LUTHER EAST ADDITION

KNOW ALL PERSONS BY THESE PRESENTS: That The Luther Company, LLLP, a Minnesota limited liability limited partnership, fee owner of the following described property situated in the City of Vadnais Heights and in the City of Gem Lake, County of Ramsey, State of Minnesota:

Lot 10, AUDITOR'S SUBDIVISION NO. 84, RAMSEY CO. MINN.;

AND Lot 11, AUDITOR'S SUBDIVISION NO. 84, RAMSEY CO. MINN.

Has caused the same to be surveyed and platted as LUTHER EAST ADDITION and does hereby dedicate to the public for public use the public ways and the easements for drainage and utility purposes as shown on this plat

In witness whereof said The Luther Company, LLLP, a Minnesota limited liability limited partnership, has caused these presents to be signed by its proper officer this 15 day of April, 2022.

[Signature]
The Luther Company, LLLP
General Partner

STATE OF MINNESOTA
COUNTY OF Hennepin

The foregoing instrument was acknowledged before me this 25 day of April, 2022 by C. David Luther, the General Partner of The Luther Company, LLLP, a Minnesota limited liability limited partnership, on behalf of the partnership

[Signature]
Signed

Lily Haar
Printed

Notary Public, Hennepin County, Minnesota

My Commission expires January 31, 2024

I hereby certify that I have surveyed and platted the land, or directly supervised the surveying and platting of the land described on this plat as LUTHER EAST ADDITION; that this plat is a correct representation of the boundary survey, that all mathematical data and labels are correctly designated on this plat; that all monuments depicted on this plat have been, or will be correctly set within one year; that all water boundaries and wet lands, as defined in Minnesota Statutes, Section 505.01, Subd 3, as of the date of this certificate are shown and labeled on this plat; and all public ways are shown and labeled on this plat

Dated this 18th day of April, 2022.

[Signature]
Lynn P. Caswell, Land Surveyor
Minnesota License No 13057

STATE OF MINNESOTA
COUNTY OF Shuburne

The foregoing Surveyor's Certificate was acknowledged before me this 18th day of April, 2022 by Lynn P. Caswell, Land Surveyor, Minnesota License No 13057

[Signature]
Signed

Elizabeth J. Haglund
Printed

Notary Public, Shuburne County, Minnesota

My Commission expires January 31, 2025

CITY OF VADNAIS HEIGHTS, MINNESOTA

We do hereby certify that on the 15th day of March, 2022 the City Council of the City of Vadnais Heights, Minnesota, approved this plat. Also, the conditions of Minnesota Statutes, Section 505.03, Subd 2, have been fulfilled

[Signature], Mayor
[Signature], City Clerk

CITY OF GEM LAKE, MINNESOTA

We do hereby certify that on the 19th day of April, 2022, the City Council of the City of Gem Lake, Minnesota, approved this plat. Also, the conditions of Minnesota Statutes, Section 505 03, Subd 2, have been fulfilled.

[Signature], Mayor
[Signature], City Clerk

RAMSEY COUNTY PROPERTY TAX, RECORDS AND ELECTION SERVICES DEPARTMENT

Pursuant to Minnesota Statutes, Section 505.021, Subd 9, taxes payable in the year 2022 on the land hereinbefore described have been paid. Also, pursuant to Minnesota Statutes, Section 272.12, there are no delinquent taxes and transfer entered this 15th day of JUNE, 2022

Heather L. Bestler, Ramsey County Auditor/Treasurer

By _____, Deputy

RAMSEY COUNTY SURVEYOR

Pursuant to Minnesota Statutes, Section 383A 42, this plat is approved this 25th day of May, 2022.

[Signature]

Daniel D. Baar, L S
Ramsey County Surveyor

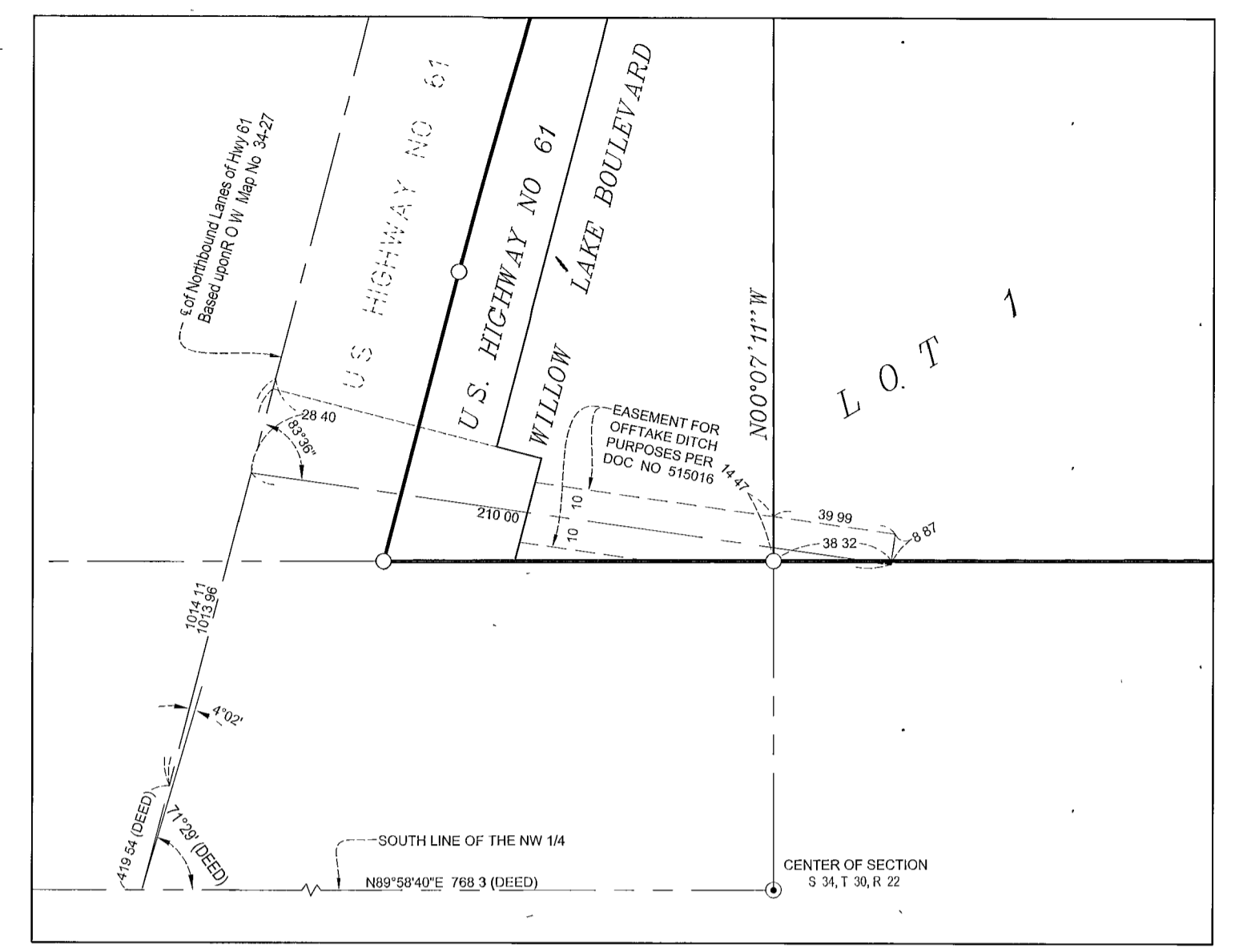
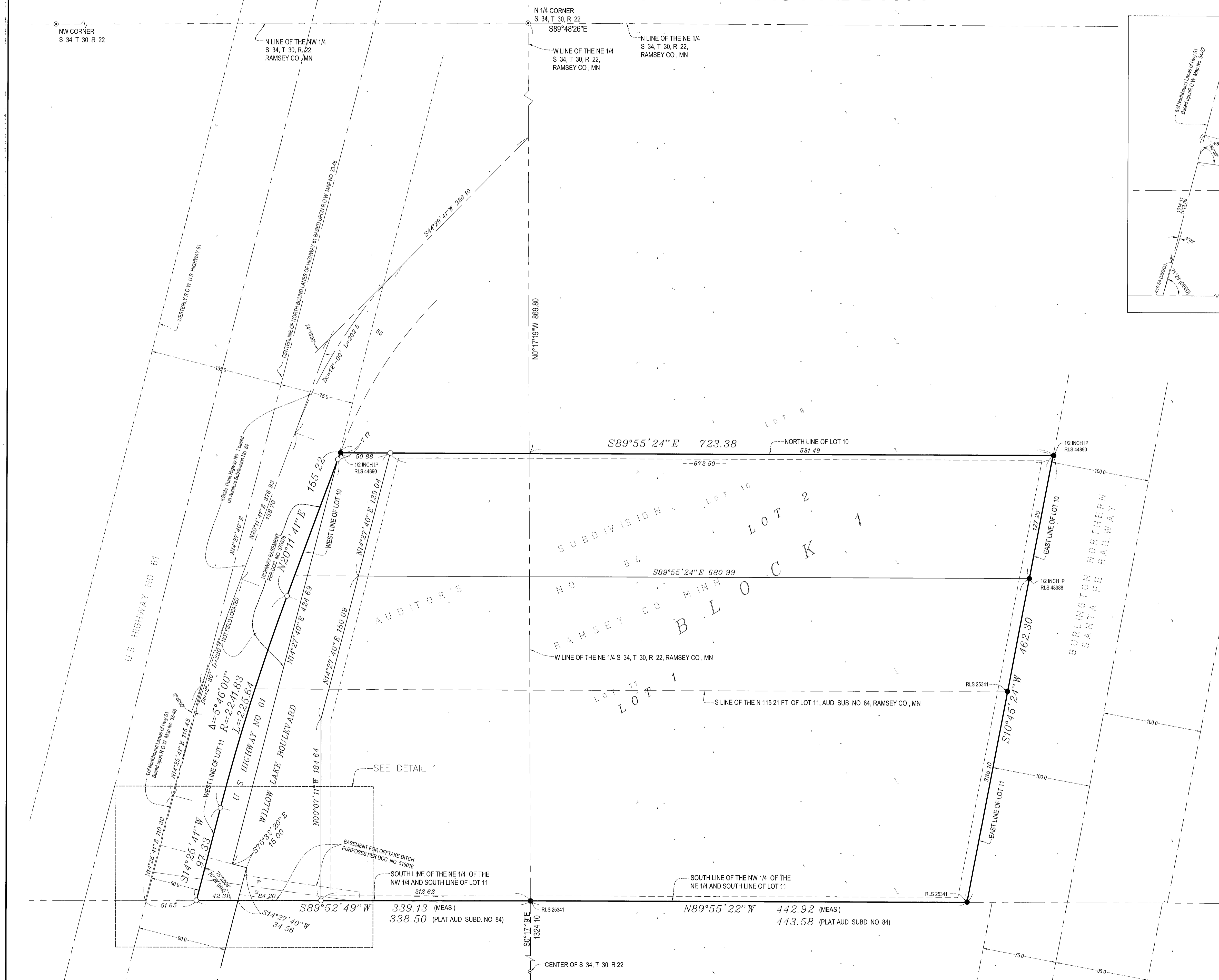
RAMSEY COUNTY REGISTRAR OF TITLES, STATE OF MINNESOTA

I hereby certify that this plat of LUTHER EAST ADDITION was filed in the Office of the Registrar of Titles for public record on this 15th day of JUNE, 2022 at 2:00 o'clock P. M., and was duly filed in Book 53 of Plats, Pages 26 and 27, as Document No 273751.

Deputy Registrar of Titles



LUTHER EAST ADDITION

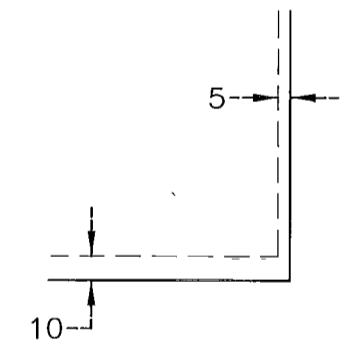


DETAIL 1

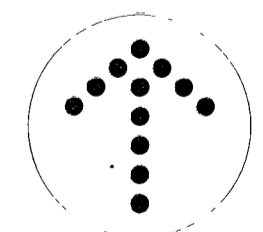
LEGEND

- DC Denotes degree of curve
 - ⊙ Denotes Cast Iron Monument
 - Denotes 1/2 inch iron pipe monument found license number varies.
 - Denotes 1/2 inch by 14 inch iron pipe monument set and marked by License No. 13057.
- No monument symbols shown at any statute required location indicates a plat monument that will be set, and which shall be in place within one year of the recording date of the plat. monuments shall be 1/2 inch by 14 inch iron pipe marked by License Number 13057.
- Bearings shown are based upon the North line of the Northeast Quarter of S. 34 T. 30, R. 22. that bears S89°48'26"E.

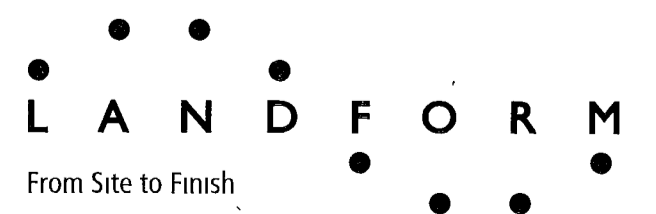
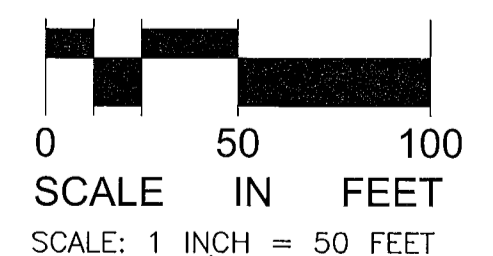
DRAINAGE AND UTILITY EASEMENTS ARE SHOWN THUS. (Not to Scale)



Being 5 feet in width and adjoining side lot lines, unless otherwise shown, and 10 feet in width and adjoining public ways and rear lot line as shown on this plat.



NORTH



From Site to Finish