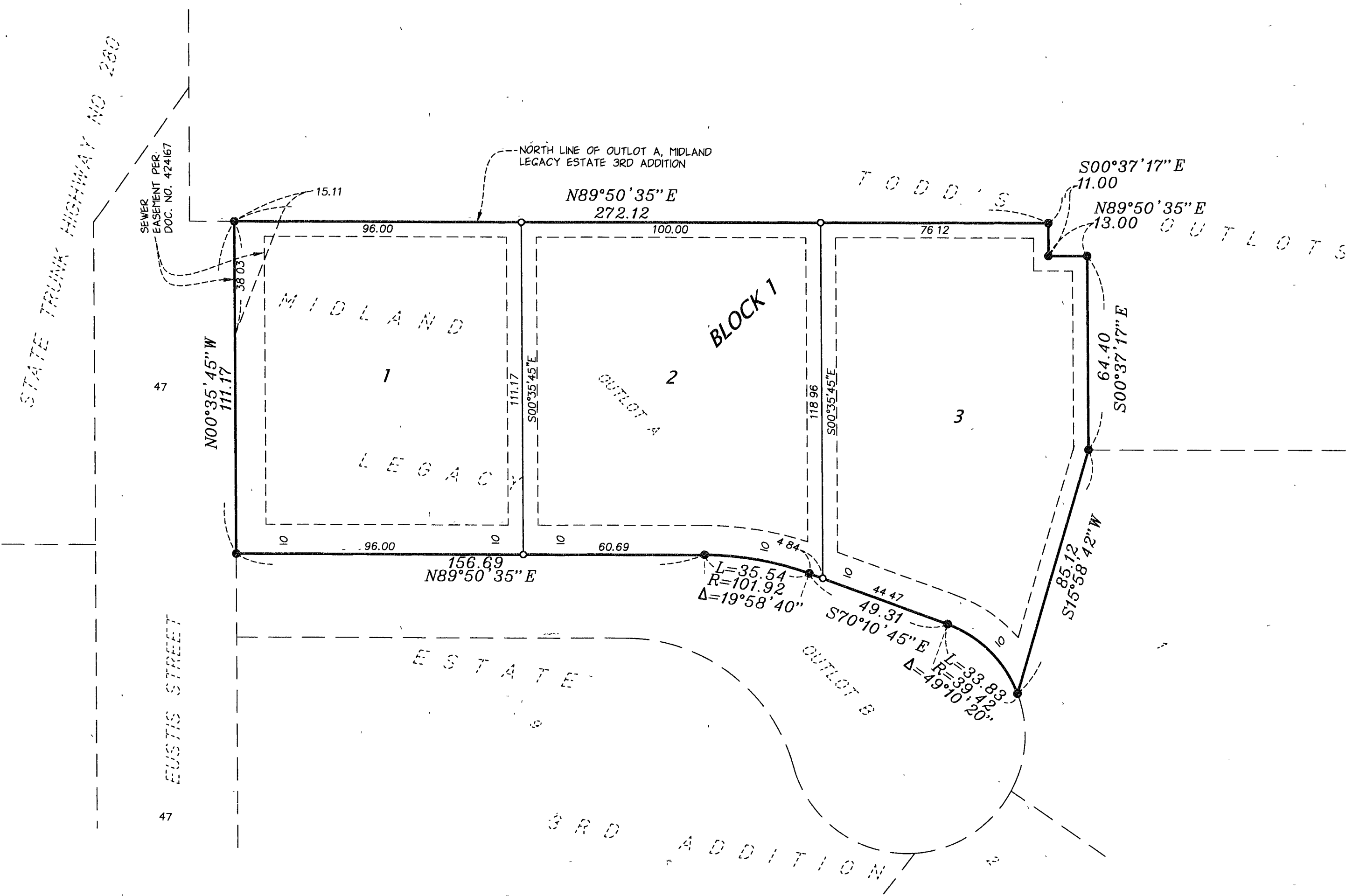


MIDLAND LEGACY ESTATE 4TH ADDITION



KNOW ALL PERSONS BY THESE PRESENTS: That Integrity Land Development, Inc., a Minnesota corporation, owner of the following described property situated in the City of Roseville, County of Ramsey, State of Minnesota

Outlot A, MIDLAND LEGACY ESTATE 3RD ADDITION, Ramsey County, Minnesota.

Has caused the same to be surveyed and platted as MIDLAND LEGACY ESTATE 4TH ADDITION and does hereby dedicate to the public for public use forever the easements for drainage and utility purposes only as shown on this plat.

In witness whereof said Integrity Land Development, Inc., a Minnesota corporation, has caused these presents to be signed by its proper officer this 21st day of April, 2022.

Signed, Integrity Land Development, Inc., a Minnesota corporation

Todd D. Ganz, president
Todd D. Ganz

STATE OF Minnesota
COUNTY OF Washington

The foregoing instrument was acknowledged before me this 21st day of April, 2022, by Todd D. Ganz, president of Integrity Land Development, Inc., a Minnesota corporation, on behalf of the corporation.

Connie J. P. Villari *Connie J. P. Villari*
Notary Public, Dakota County, Minnesota
My Commission Expires Jan. 31, 2025

I, Daniel L. Thurmes, do hereby certify that I have surveyed or directly supervised the survey of the property described on this plat; prepared this plat or directly supervised the preparation of this plat; that this plat is a correct representation of the boundary survey, that all mathematical data and labels are correctly designated on this plat, that all monuments depicted on this plat have been correctly set; that all monuments indicated on this plat will be correctly set within one year; that all water boundaries and wet lands, as defined in Minnesota Statutes, Section 505.01, Subd. 3, as of the date of this surveyor's certification are shown and labeled on this plat; and all public ways are shown and labeled on this plat.

Dated this 21st day of April, 2022

Dan L. Thurmes
Daniel L. Thurmes, Land Surveyor
Minnesota License No. 25718

STATE OF MINNESOTA
COUNTY OF Washington

The foregoing instrument was acknowledged before me this 21st day of April, 2022, by Daniel L. Thurmes, Licensed Land Surveyor.

Connie J. P. Villari *Connie J. P. Villari*
Notary Public, Dakota County, Minnesota
My Commission Expires Jan. 31, 2025

CITY OF ROSEVILLE
We do hereby certify that on the 11th day of April, 2022 the City Council of the City of ROSEVILLE, Minnesota, approved this plat.

[Signature] Mayor
[Signature] Clerk

PROPERTY TAX, RECORDS, AND ELECTION SERVICES DEPARTMENT
Pursuant to Minnesota Statutes, Section 505.021, Subd. 9, taxes payable in the year 2022 on the land hereinbefore described have been paid. Also, pursuant to Minnesota Statutes, Section 272.12, there are no delinquent taxes and transfer entered this 18 day of April, 2022.

Heather L. Bestler, Ramsey County Auditor/Treasurer

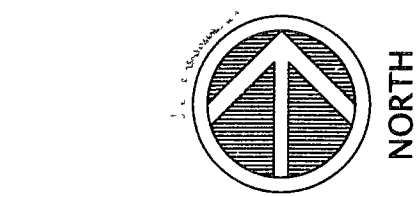
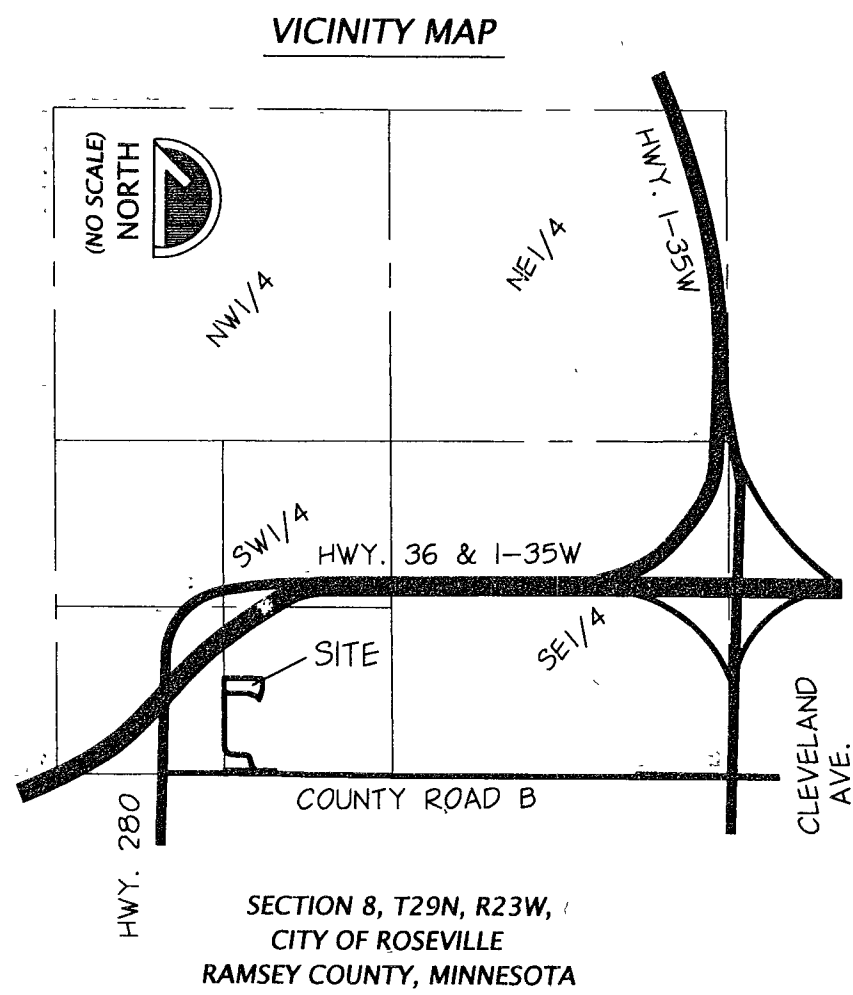
By _____, Deputy

COUNTY SURVEYOR
Pursuant to Minnesota Statutes, Section 383A.42, this plat is approved this 28th day of April, 2022.

Daniel D. Baar
Daniel D. Baar
Ramsey County Surveyor

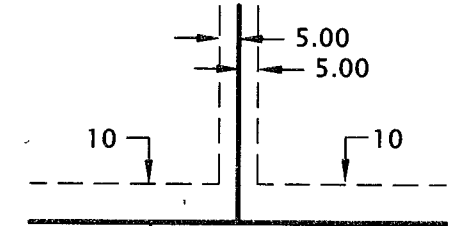
REGISTRAR OF TITLES, County of Ramsey, State of Minnesota
I hereby certify that this plat of MIDLAND LEGACY ESTATE 4TH ADDITION was filed in the office of the Registrar of Titles for public record on this 28th day of April, 2022, at 9:00 o'clock A.M. and was duly filed in Book 53 of Plats, Page 24, as Document Number 2731899.

Deputy Registrar of Titles



FOR THE PURPOSES OF THIS SURVEY THE NORTH LINE OF OUTLOT A, MIDLAND LEGACY ESTATE 3RD ADDITION IS ASSUMED TO BEAR N89°50'35\"/>

DRAINAGE AND UTILITY EASEMENTS ARE SHOWN AS THUS (NOT TO SCALE)



BEING 10 FEET IN WIDTH AND ADJOINING PUBLIC WAYS AND BEING 5.00 FEET IN WIDTH AND ADJOINING LOT LINES AND PLAT BOUNDARY LINES UNLESS OTHERWISE SHOWN ON THIS PLAT.

LEGEND

- Denotes 1/2 inch x 14 inch iron pipe marked with Minnesota License No. 25718 to be set within one year after recording of this plat.
- Denotes found 1/2 inch x 14 inch iron pipe marked with Minnesota License No. 25718.

