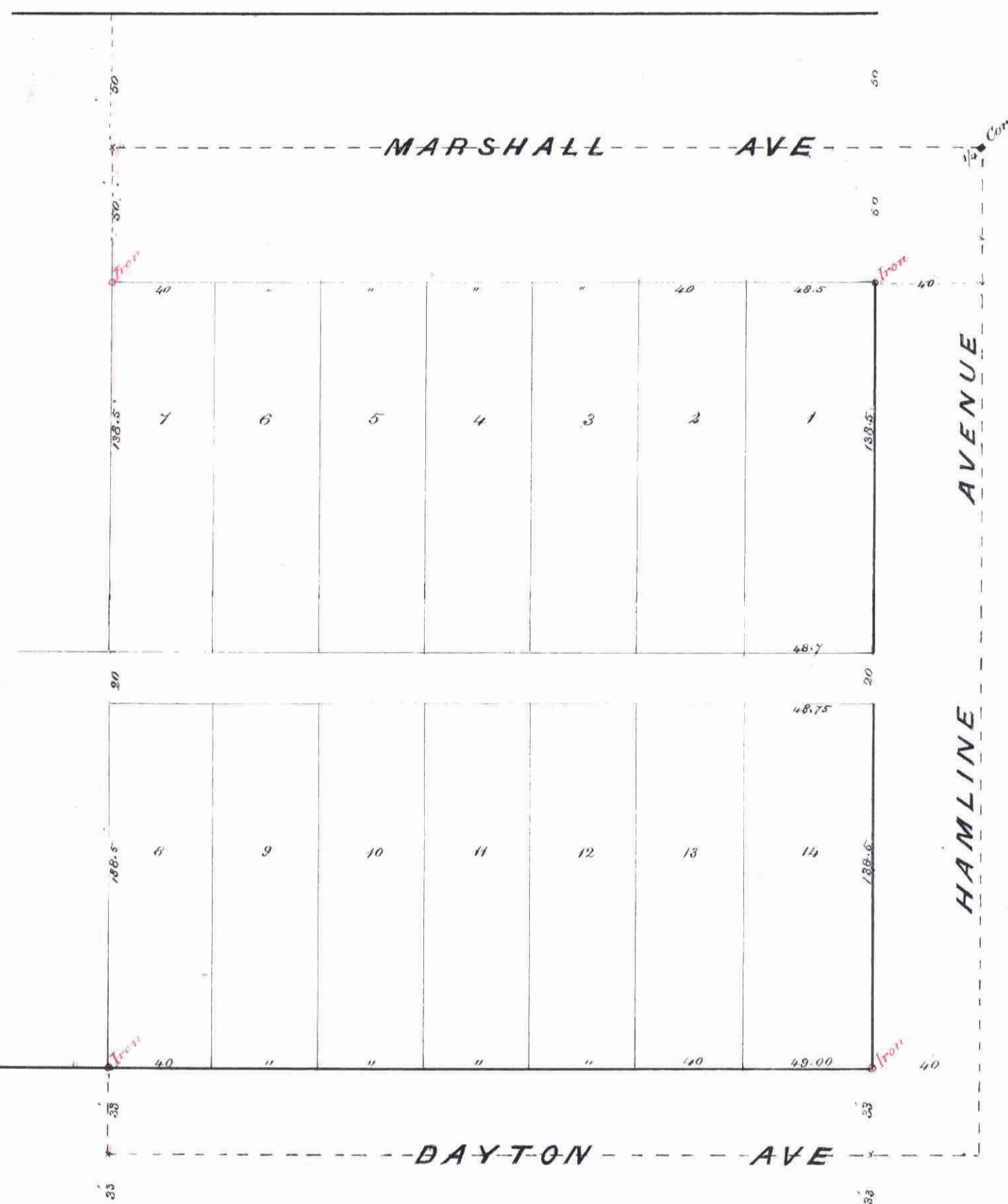


ALBERT I. SEITER'S

ADDITION TO ST. PAUL, MINNESOTA.

3 PM
11-45



We hereby certify to having surveyed and placed the property as described on this map as Albert I. Seiter's Addition to St. Paul, Minnesota and have placed iron monuments at the corners of every block as shown on this map and the same is correct.

W. A. Nichols & Son
Surveyors

State of Minnesota,
County of Ramsey,
On this 2nd day of
December A.D. 1886 personally appeared
before the undersigned Thomas F. Sharkey
one of the firm of Thomas F. Sharkey & Son to me
well known and acknowledged that they
executed the foregoing certificate as their
own free act and deed.

Thomas F. Sharkey,
Notary Public
Ramsey County Minnesota

This is to certify that Albert I. Seiter of
Brown County, Minnesota proprietor of 287 1/2 acres
of the North East corner of the North West 1/4 of Sec 36
28 Range 28 West, and more fully described as follows
Commencing at the North East corner of North West
1/4 of said Sec 36 and running West on 41st St. line
of said Sec 36 and running West on 41st St. line
East 329 1/2 feet to East line of said 1/4 Sec; thence North
on said East line 380 1/2 feet to place of commencing
and hereafter known as Albert I. Seiter's Addition
to St. Paul Minnesota as shown by this plat;
herely dedicate to the public and for the public
use forever all the streets avenues and alleys
as herein indicated.
Witness my hand and seal this 29th
day of November 1886.

In presence of
W. A. Nichols & Son
Chas. L. Root

Albert I. Seiter act. U.
Seal

State of Minnesota,
County of Brown,
On this 29th day of
November A.D. 1886 personally came before me
the undersigned Albert I. Seiter to me well known
and who acknowledged that he executed the foregoing
certificate for the uses and purposes therein
expressed.

W. A. Seiter,
Notary Public
Brown County, Minnesota

Accepted and Approved this 2nd day of December
A.D. 1886

W. A. Seiter
W. A. Seiter Plat Commissioners

Taxes Due 1886

Jas. Quinn
County Auditor
Ramsey County Minnesota

Assessments

City Treasurer
St. Paul

Shereby recommend the acceptance of the within
plat by the Common Council

J. W. Remond
City Engineer

Accepted by the Common Council of
the City of St. Paul on the 21st day
of Dec 1886.

Miss C. P. ...
City Clerk

STATE OF MINNESOTA,
County of Ramsey,
Effect of Death.
This is to certify that the within
instrument was filed for record
in this Office with Seal, on the
24th day of December A. D.
1886 at 3 o'clock P. M., and
that the same was duly recorded in
Book No. 4 of Plats
R. E. Wiley
Register of Deeds

This plat document
is an UNOFFICIAL
copy of a
Subdivision Plat or
Registered Land Survey
and is made available for
information purposes only.
To obtain an official copy
please contact the Ramsey
County Recorder's Office.



OFFICE OF
COUNTY TREASURER
ST. PAUL, MINN.

W. A. Seiter
County Treasurer

DEC 24 1886
George ...
CITY TREAS.

45