

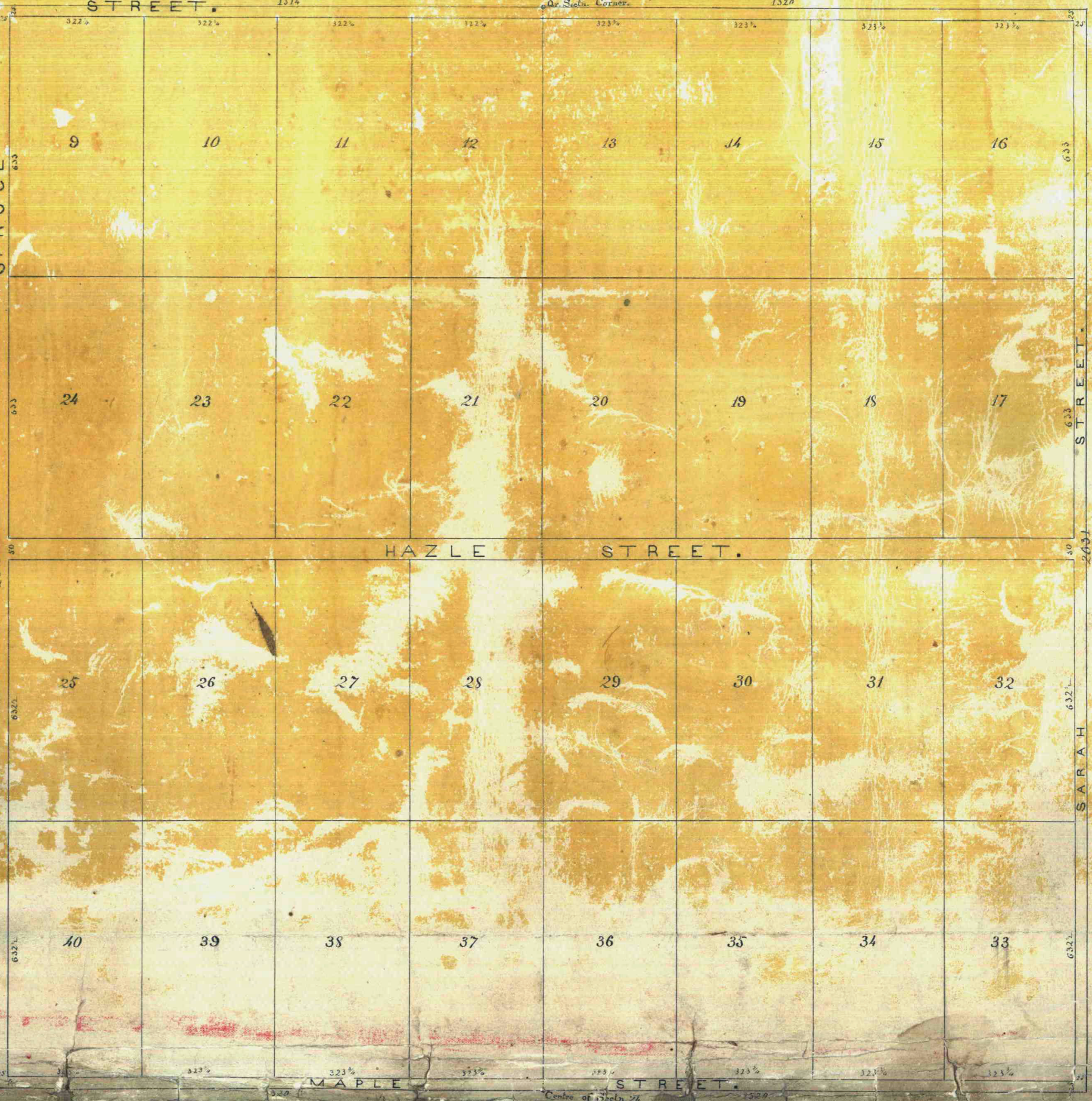
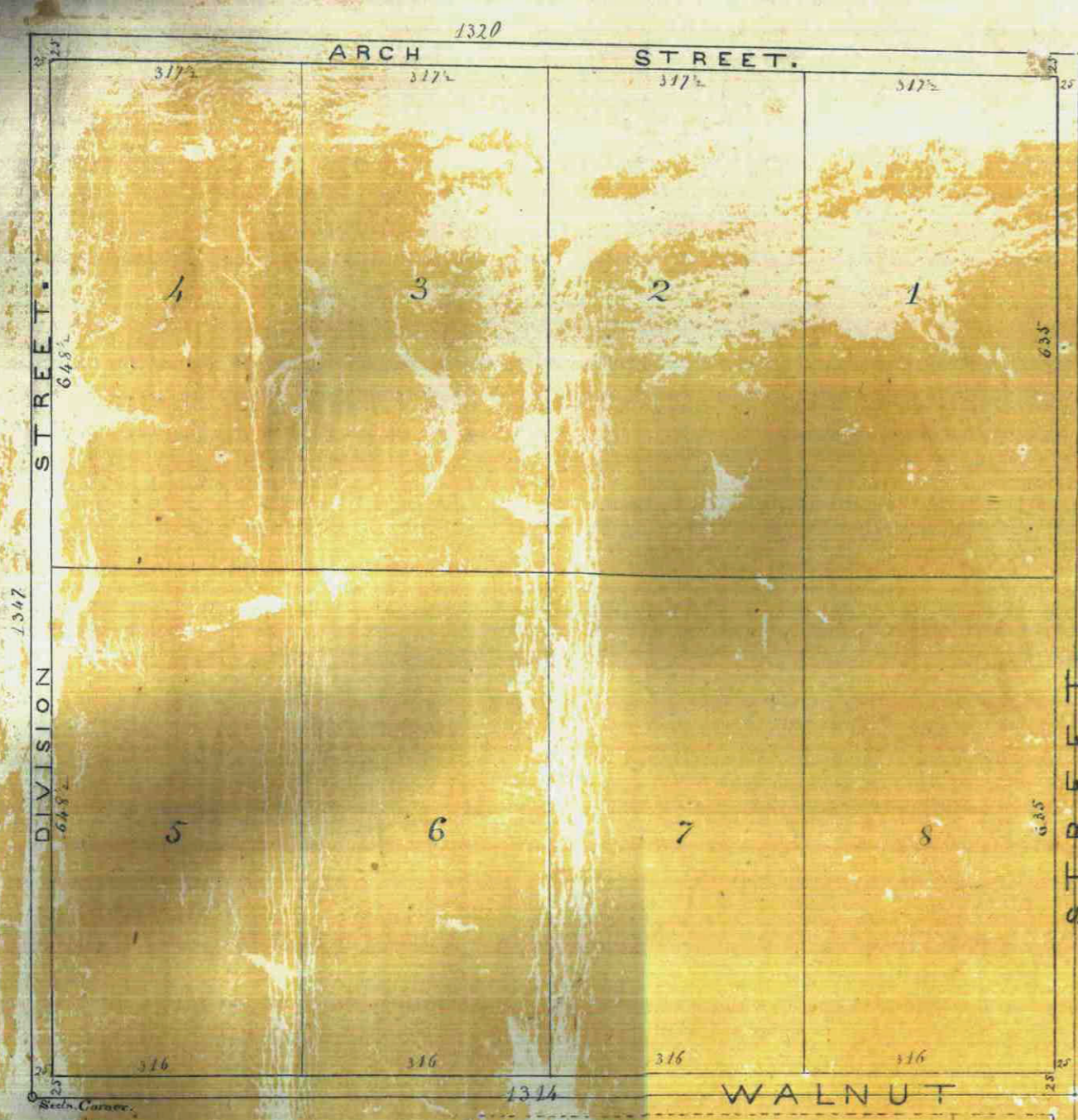
SARAH'S OUT LOTS TO SAINT PAUL.

Philip Goldsmith proprietor.

These lots are beautifully situated near the City of Saint Paul, and contain
5 Acres each.

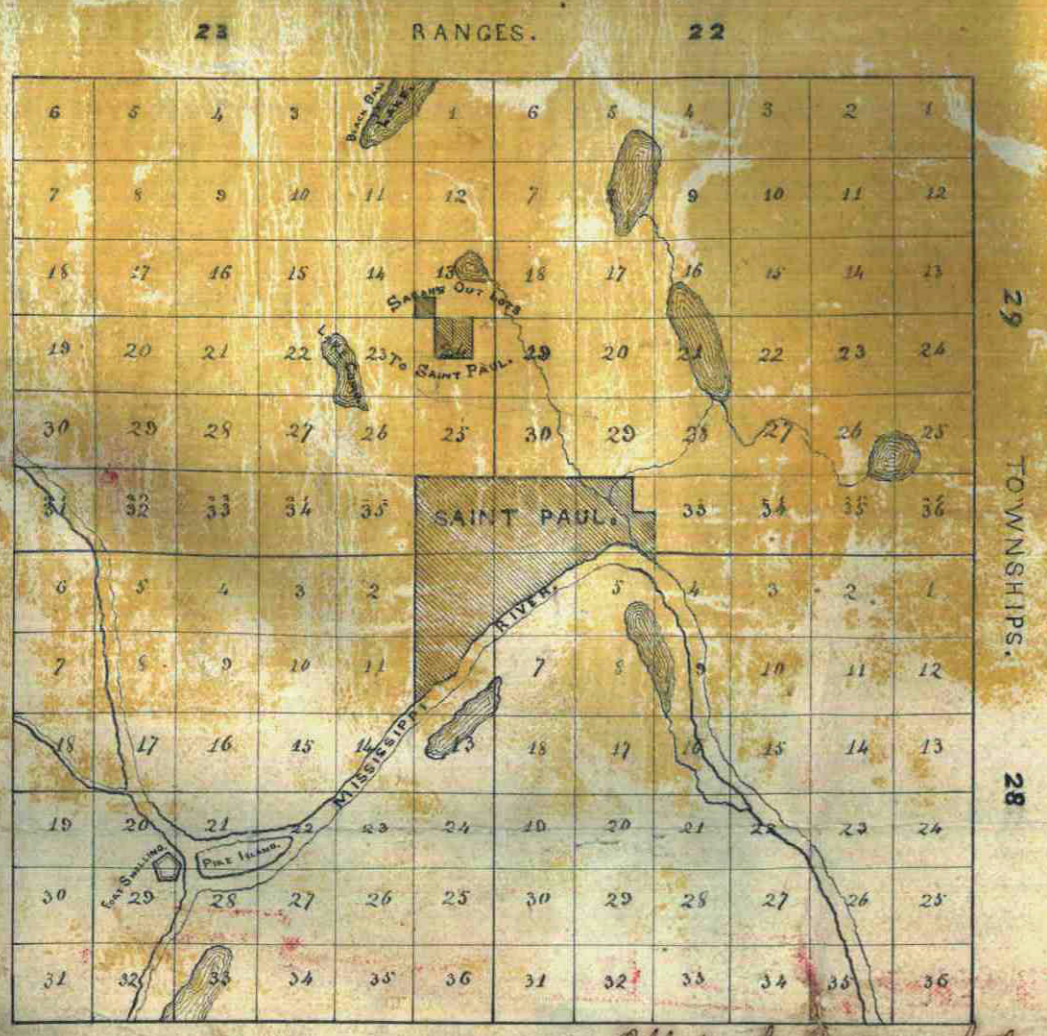
Scale 200ft to an inch

This plat document is an UNOFFICIAL copy of a Subdivision Plat or Registered Land Survey and is made available for information purposes only. To obtain an official copy please contact the Ramsey County Recorder's Office.



Before me the undersigned authority appeared Philip Goldsmith proprietor of "Sarah's Out Lots to Saint Paul," which is situated on and includes the south west quarter of the north west quarter of Section Thirteen, and the east half of the north west quarter, and the west half of the north east quarter of Section Twenty four, in Township Number Twenty Nine North, of Range Twenty three West of the fourth principal Meridian, and acknowledged the annexed plat of the survey thereof to be his own act and deed for the purposes therein contained, and as a dedication of the streets herein to the public use.
Witness my hand and acknowledged before me this 24th day of August 1857.
Philip Goldsmith
Saint Paul, Minn.
Notary Public No. 7.

I do certify that this is a correct diagram of the Survey of "Sarah's Out Lots to Saint Paul," lying on and including the S.W. 1/4 of the N.W. 1/4 of Section 13, and the East 1/2 of the N.W. 1/4, and the West 1/2 of the N.E. 1/4 of Section 24, Township 29 North, Range 23 West of 4th principal Meridian, surveyed June, 1857.
Philip Goldsmith
Surveyor



Office of the Surveyor of Lands, Ramsey County, Minn. This is to certify that the above is a correct copy of the original plat of the Survey of "Sarah's Out Lots to Saint Paul," as the same appears on file in my office.
Philip Goldsmith
Surveyor