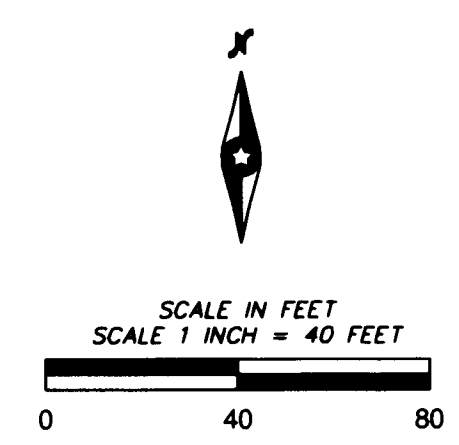
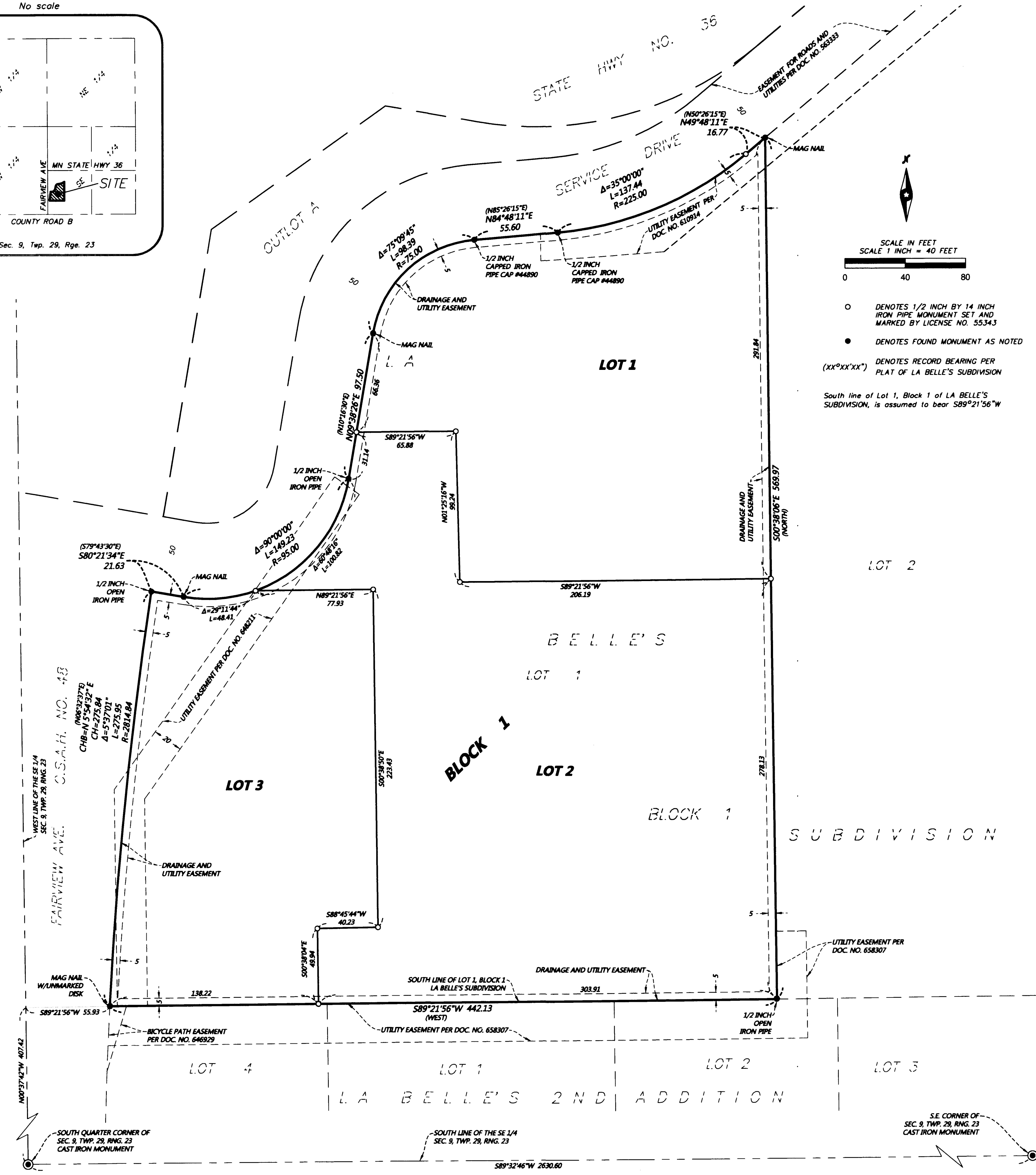
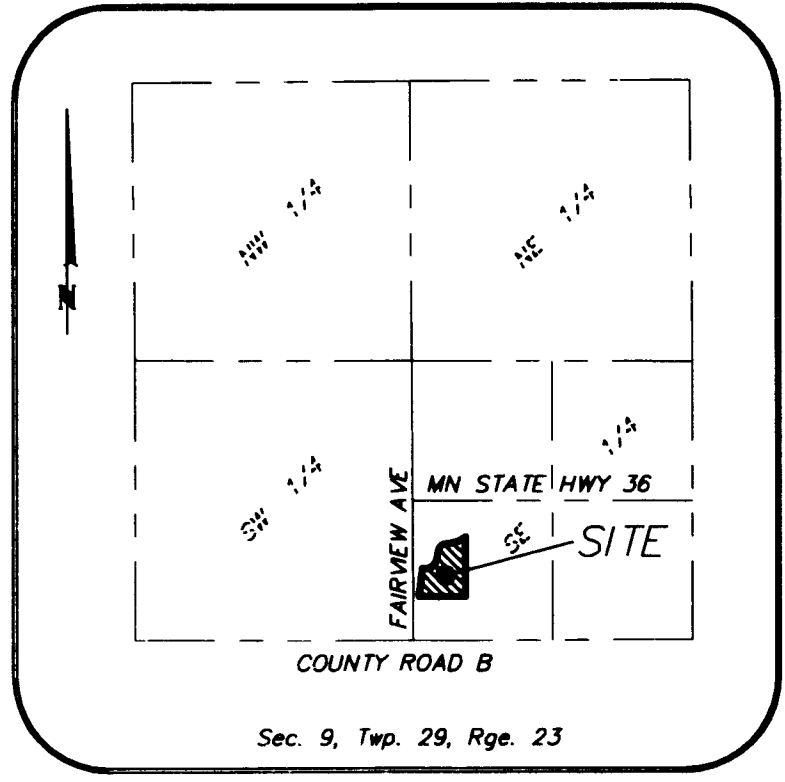


COPY

ROSEVILLE PLAZA

VICINITY MAP
No scale



- DENOTES 1/2 INCH BY 14 INCH IRON PIPE MONUMENT SET AND MARKED BY LICENSE NO. 55343
- DENOTES FOUND MONUMENT AS NOTED
- (XX°XX'XX") DENOTES RECORD BEARING PER PLAT OF LA BELLE'S SUBDIVISION

South line of Lot 1, Block 1 of LA BELLE'S SUBDIVISION, is assumed to bear S89°21'56\"/>

KNOW ALL PERSONS BY THESE PRESENTS: That Roseville Holdings, LLC, a Minnesota limited liability company, fee owner of the following described property situated in the City of Roseville, County of Ramsey, State of Minnesota:

Lot 1, Block 1, La Belle's Subdivision, Ramsey County, Minnesota.

Has caused the same to be surveyed and platted as ROSEVILLE PLAZA, and does hereby donate and dedicate to the public, for public use forever the easements as shown on this plat for drainage and utility purposes.

In witness whereof said Roseville Holdings, LLC, a Minnesota limited liability company, has caused these presents to be signed by its proper officer this 20th day of September, 2019.

SIGNED: ROSEVILLE HOLDINGS, LLC
Todd C. Jones its President

STATE OF Minnesota
COUNTY OF Hennepin
This instrument was acknowledged before me this 20th day of September, 2019, by Todd C. Jones, President of Roseville Holdings, LLC, a Minnesota limited liability company, on behalf of said company.

Shelly L. Mason
Notary Signature Shelly L. Mason
Notary Printed Name

Notary Public, State of Minnesota, County, Hennepin
My Commission Expires January 31, 2021

I, Christopher R. Foley, do hereby certify that this plat was prepared by me or under my direct supervision; that I am a duly Licensed Land Surveyor in the State of Minnesota; that this plat is a correct representation of the boundary survey; that all mathematical data and labels are correctly designated on this plat; that all monuments depicted on this plat have been, or will be correctly set within one year; that all water boundaries and wet lands, as defined in Minnesota Statutes, Section 505.01, Subd. 3, as of the date of this certificate are shown and labeled on this plat; and all public ways are shown and labeled on this plat.

Dated this 19th day of SEPTEMBER, 2019.

Christopher R. Foley
Christopher R. Foley, Licensed Land Surveyor
Minnesota License No. 55343

STATE OF MINNESOTA
COUNTY OF Hennepin
The foregoing Surveyor's Certification was acknowledged before me this 19th day of September, 2019, by Christopher R. Foley, Licensed Land Surveyor, Minnesota License Number 55343.

Shannon Simmen
Notary Signature Shannon Simmen
Notary Printed Name

Notary Public, Carver, County, Minnesota
My Commission Expires January 31, 2023

CITY OF ROSEVILLE, MINNESOTA
We do hereby certify that on the 25th day of February, 2017, the City Council of the City of Roseville, Minnesota approved this plat. Also, the conditions of Minnesota Statutes, Section 505.03, Subd. 2, have been fulfilled.

John Mayor
[Signature] Manager

PROPERTY TAX, RECORDS AND ELECTION SERVICES
Pursuant to Minnesota Statutes, Section 505.021, Subd. 9, taxes payable in the year 20 , on the land hereinbefore described have been paid. Also, pursuant to Minnesota Statutes, Section 272.12, there are no delinquent taxes and transfer entered this day of , 20 .

Christopher A. Samuel, Ramsey County Auditor/Treasurer

By , Deputy

COUNTY SURVEYOR
Pursuant to Minnesota Statutes, Section 383A.42, this plat is approved this 29th day of October, 2019.

Daniel D. Baar
Daniel D. Baar, L.S.
Ramsey County Surveyor

REGISTRAR OF TITLES, COUNTY OF RAMSEY, STATE OF MINNESOTA
I hereby certify that this plat of ROSEVILLE PLAZA was filed in the office of the Registrar of Titles for public record on this 14th day of NOVEMBER, 2019, at 3:00 o'clock P.M., and was duly filed in Book 52 of Plats, Page 1 as Document Number 2652997.

Deputy Registrar of Titles
Ramsey County, Minnesota