

# MCCARRONS HILL

LAKECREST ADDITION

KNOW ALL MEN BY THESE PRESENTS: That Hand In Hand, Christian Montessori, a Minnesota non-profit corporation, fee owner of the following described property situated in the City of Roseville, County of Ramsey, State of Minnesota:

Lot 20, except the east 100 feet thereof, THORNTON'S SUBDIVISION OF THE NE 1/4 OF SECTION 13, TOWN 29, RANGE 23, Ramsey County, Minnesota, according to the recorded plat thereof;  
AND  
That part of Lot 18, THORNTON'S SUBDIVISION OF THE NE 1/4 OF SECTION 13, TOWN 29, RANGE 23, lying West of the East 200 feet thereof;  
AND  
Lot 19, THORNTON'S SUBDIVISION OF THE NE 1/4 OF SECTION 13, TOWN 29, RANGE 23;  
AND  
The East 100 feet of Lot 20, THORNTON'S SUBDIVISION OF THE NE 1/4 OF SECTION 13, TOWN 29, RANGE 23.

Has caused the same to be surveyed and platted as MCCARRONS HILL and does hereby dedicate to the public for public use forever the public way and drainage and utility easements as shown on this plat.

In witness whereof said Hand In Hand, Christian Montessori, a Minnesota non-profit corporation, has caused these presents to be signed by its proper officer this 26 day of June, 2019.

SIGNED: HAND IN HAND, CHRISTIAN MONTESSORI HOME SCHOOL ACADEMY

Michelle A.L. Thompson, Executive Director

STATE OF MINNESOTA  
COUNTY OF RAMSEY

The foregoing instrument was acknowledged before me this 26 day of June, 2019, by Michelle A.L. Thompson, as Executive Director of Hand In Hand, Christian Montessori, a Minnesota non-profit corporation, on behalf of the non-profit corporation.

Notary Public, Ramsey County, Minnesota  
My Commission Expires

I, Jason E. Rud, Licensed Land Surveyor, do hereby certify that I have surveyed or directly supervised the survey of the property described on this plat; prepared this plat or directly supervised the preparation of this plat; that this plat is a correct representation of the boundary survey; that all mathematical data and labels are correctly designated on this plat; that all monuments depicted on this plat have been correctly set or will be correctly set within one year of recording this plat; that all water boundaries and wet lands, as defined in Minnesota Statutes, Section 505.01, Subd. 3, as of the date of the surveyor's certification are shown and labeled on this plat; and all public ways are shown and labeled on this plat.

Dated this 17th day of June, 2019.

Jason E. Rud, Land Surveyor  
Minnesota License No. 41578

STATE OF MINNESOTA  
COUNTY OF ANOKA  
The foregoing Surveyor's Certificate was acknowledged before me this 17 day of June, 2019, by Jason E. Rud, a Licensed Land Surveyor.

Notary Public, Anoka County, Minnesota  
My Commission Expires

CITY OF ROSEVILLE  
We do hereby certify that on the 22nd day of April, 2019, the City Council of the City of Roseville, Minnesota, approved this plat.

Christopher A. Samuel, Ramsey County Auditor/Treasurer

PROPERTY TAX, RECORDS AND ELECTION SERVICES DEPARTMENT  
Pursuant to Minnesota Statutes, Section 505.021, Subd. 9, taxes payable in the year 2019 on the land hereinbefore described have been paid. Also, pursuant to Minnesota Statutes, Section 272.12, there are no delinquent taxes and transfer entered this 24 day of June, 2019.

By Deputy

COUNTY SURVEYOR  
Pursuant to Minnesota Statutes, Section 383A.42, this plat is approved this 24th day of June, 2019.

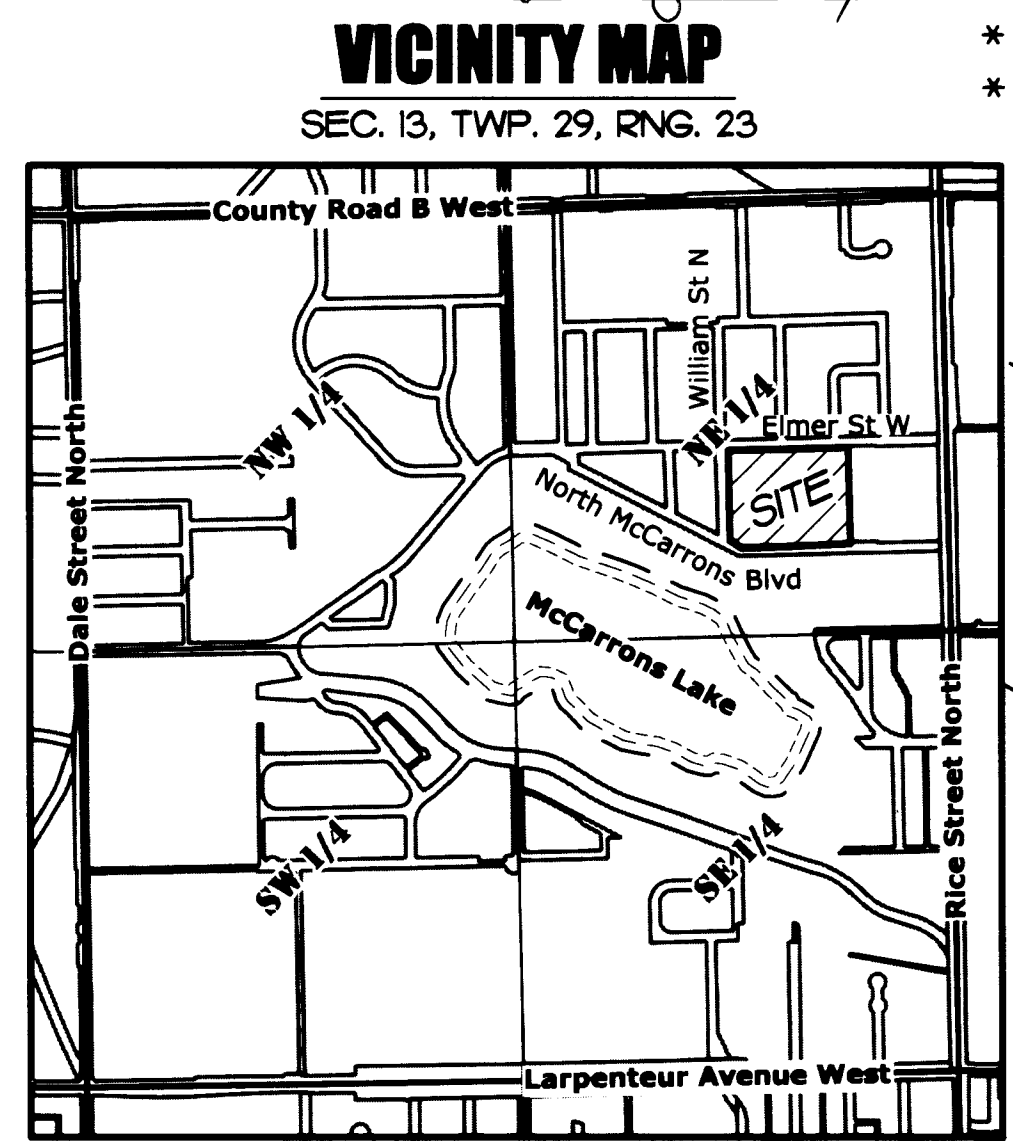
Daniel D. Baar, L.S.  
Ramsey County Surveyor

COUNTY RECORDER  
COUNTY OF RAMSEY, STATE OF MINNESOTA  
I hereby certify that this plat of MCCARRONS HILL was filed in the office of the County Recorder for public record on this 24 day of June, 2019, at 11 o'clock A.M., and was duly filed in Book 128 of Plats, Page 38 as Document Number 4763076.

Deputy County Recorder

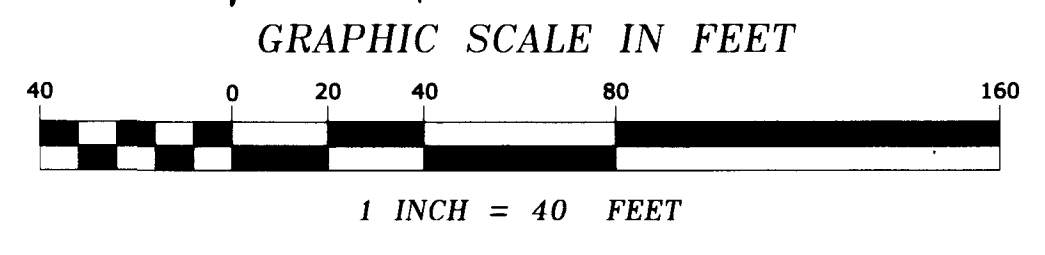
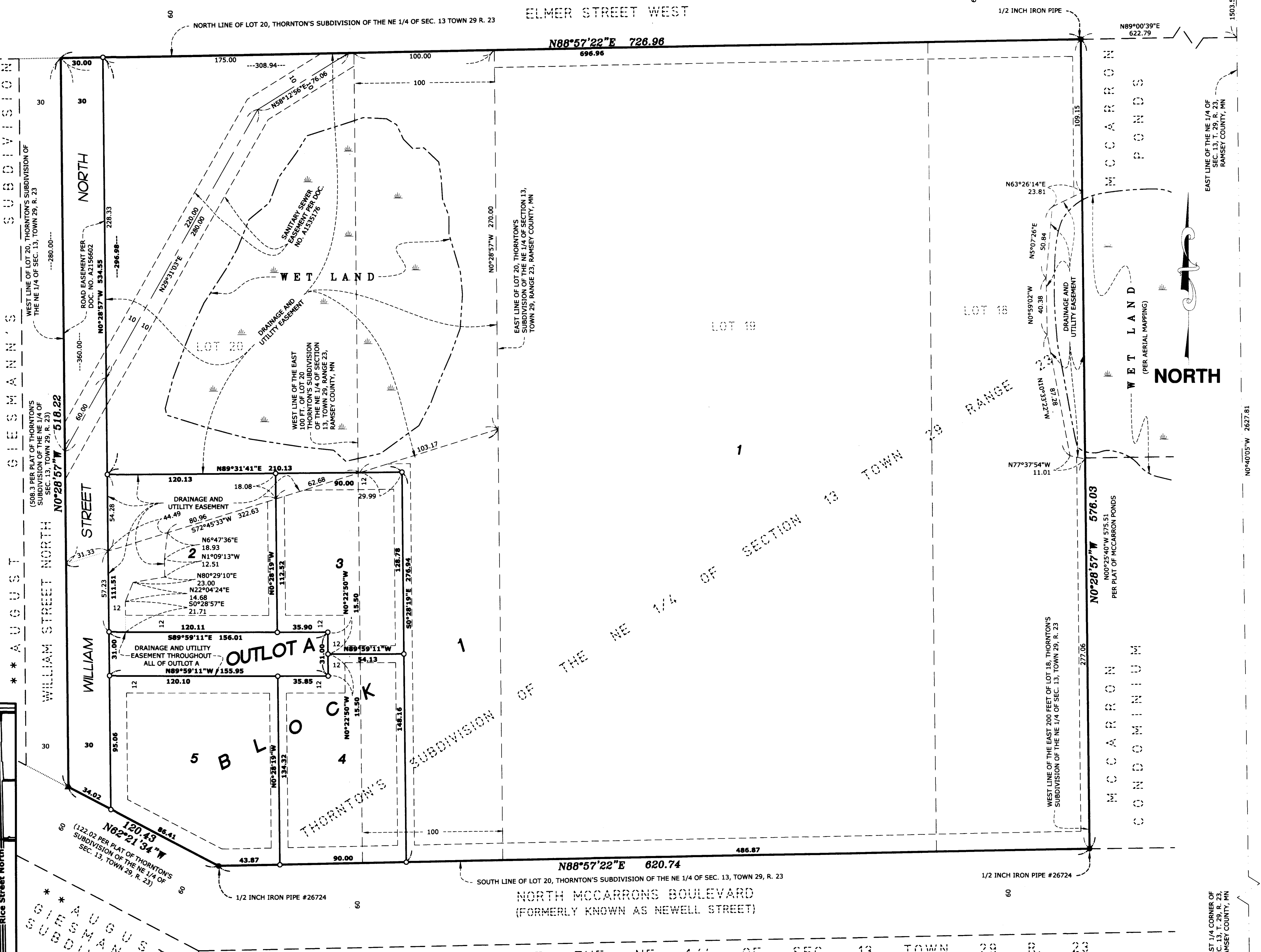
REGISTRAR OF TITLES  
COUNTY OF RAMSEY, STATE OF MINNESOTA  
I hereby certify that this plat of MCCARRONS HILL was filed in the office of the Registrar of Titles for public record on this 24 day of June, 2019, at 11 o'clock A.M., and was duly filed in Book 51 of Plats, Page 44, as Document Number 2642228.

Deputy Registrar of Titles



RAMSEY COUNTY, MINNESOTA (NO SCALE)

FOR THE PURPOSES OF THIS PLAT, THE EAST LINE OF THE NORTHEAST QUARTER OF SECTION 13, TOWNSHIP 29, RANGE 23, RAMSEY COUNTY, MINNESOTA, IS ASSUMED TO BEAR NORTH 00 DEGREES 40 MINUTES 05 SECONDS WEST.



- DENOTES 1/2 INCH BY 18 INCH IRON PIPE MONUMENT MARKED RLS 41578 TO BE SET WITHIN ONE YEAR OF THE RECORDING OF THIS PLAT.
- DENOTES FOUND IRON MONUMENT AS LABELED.
- ▲ DENOTES FOUND PK NAIL
- ⊕ DENOTES RAMSEY COUNTY CAST IRON MONUMENT.
- ▬ DENOTES WET LAND DELINEATED BY JACOBSON ENVIRONMENTAL (UNLESS OTHERWISE NOTED)

EST. 1877  
**E. G. RUD & SONS, INC.**  
Professional Land Surveyors

EAST 1/4 CORNER OF SEC. 13, T. 29, R. 23, RAMSEY COUNTY, MN

EAST LINE OF THE NE 1/4 OF SEC. 13, T. 29, R. 23, RAMSEY COUNTY, MN

NORTHEAST CORNER OF SEC. 13, T. 29, R. 23, RAMSEY COUNTY, MN