

MILTON ADDITION BLOCK V

— TO THE CITY OF SAINT PAUL RAMSEY CO —

SURVEYED IN NOVEMBER

1886

49.

Shewly certify to having surveyed and platted the property as described on this map as Milton Addition Block Five to the city of Saint Paul Ramsey County Minn as described on this map and have placed iron monuments at the corners of each and every block as shown on this map and the same to correct.

Chas. A. Forbe
Surveyor

State of Minnesota } ss. On this 18 day of December 1886 personally appeared before the undersigned Charles A. Forbe to me well known and he acknowledged that he executed the foregoing certificate as his own free act and deed

Edward J. Godfrey
Notary Public
Ramsey Co Minn.

This is to certify that Mary Barlean (M^{rs} Barlean) has authorized me to subdivide the North half of South West quarter of North East quarter of South West quarter (1/2 of 3/4 of 1/4 of 3/4) of Section Thirty Five Twp Twenty Four Range Twenty Three 23rd and 24th Ranges - have caused the same to be surveyed and platted and hereafter known as Milton Addition Block Five to the city of Saint Paul Ramsey County Minn as shown by this plat and hereby dedicate to the public and for the public use forever all the streets, avenues, alleys, Parks, and Recreations, as shown and indicated.

In presence of:
Edward J. Godfrey
A. A. Doolittle
Mary Barlean
Wm. L. Barlean

State of Minnesota } ss. On this 18 day of December 1886 personally came me the undersigned Mary Barlean and Wm. L. Barlean her husband to me well known and they acknowledged that they executed the foregoing certificate for the uses and purposes therein expressed.

Edward J. Godfrey
Notary Public
Ramsey Co Minn.

Accepted and approved this 20th day of December 1886.

S. S. Tolson
J. W. Starkey

Plat Commissioners

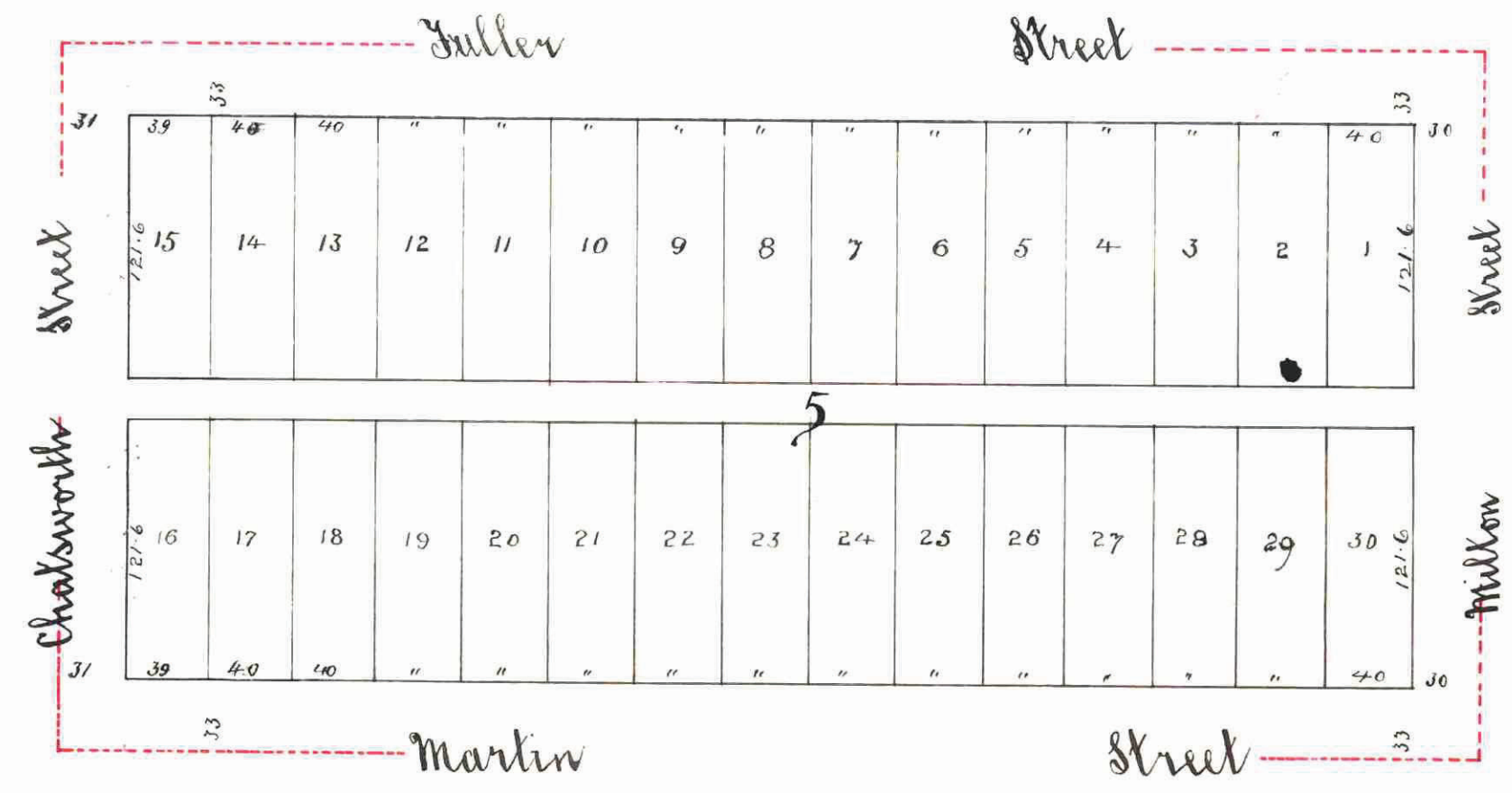
Shewly recommend the acceptance of the within plat by the Common Council

L. W. Rudditt
City Engineer.

Accepted by the Common Council of the city of St. Paul on the 21st day of Dec 1886.

Thos. A. Prendergast
Com^{ptroller} Deputy City Clerk.
Jas. O'Brien
County Auditor
Ramsey Co Minn.

GLATERS ADDITION



MILTON ADDITION
No. 500 So to Be the Addition by Act.

CITY TREASURER'S OFFICE
ST. PAUL, MINN.
DEC 27 1886
PAYMENTS PAID
J. A. Rees
CITY TREAS.

This plat document is an UNOFFICIAL copy of a Subdivision Plat or Registered Land Survey and is made available for information purposes only.
To obtain an official copy please contact the Ramsey County Recorder's Office.

STATE OF MINNESOTA, ss.
County of Ramsey.
Office of the Register of Deeds.
This is to certify that the within instrument was filed for Record in this Office, at St. Paul, on the 27th day of December, A. D. 1886 at 3 o'clock P. M., and that the same was duly recorded in Book 46 of Plats page 49.
R. G. Farley
Register of Deeds.