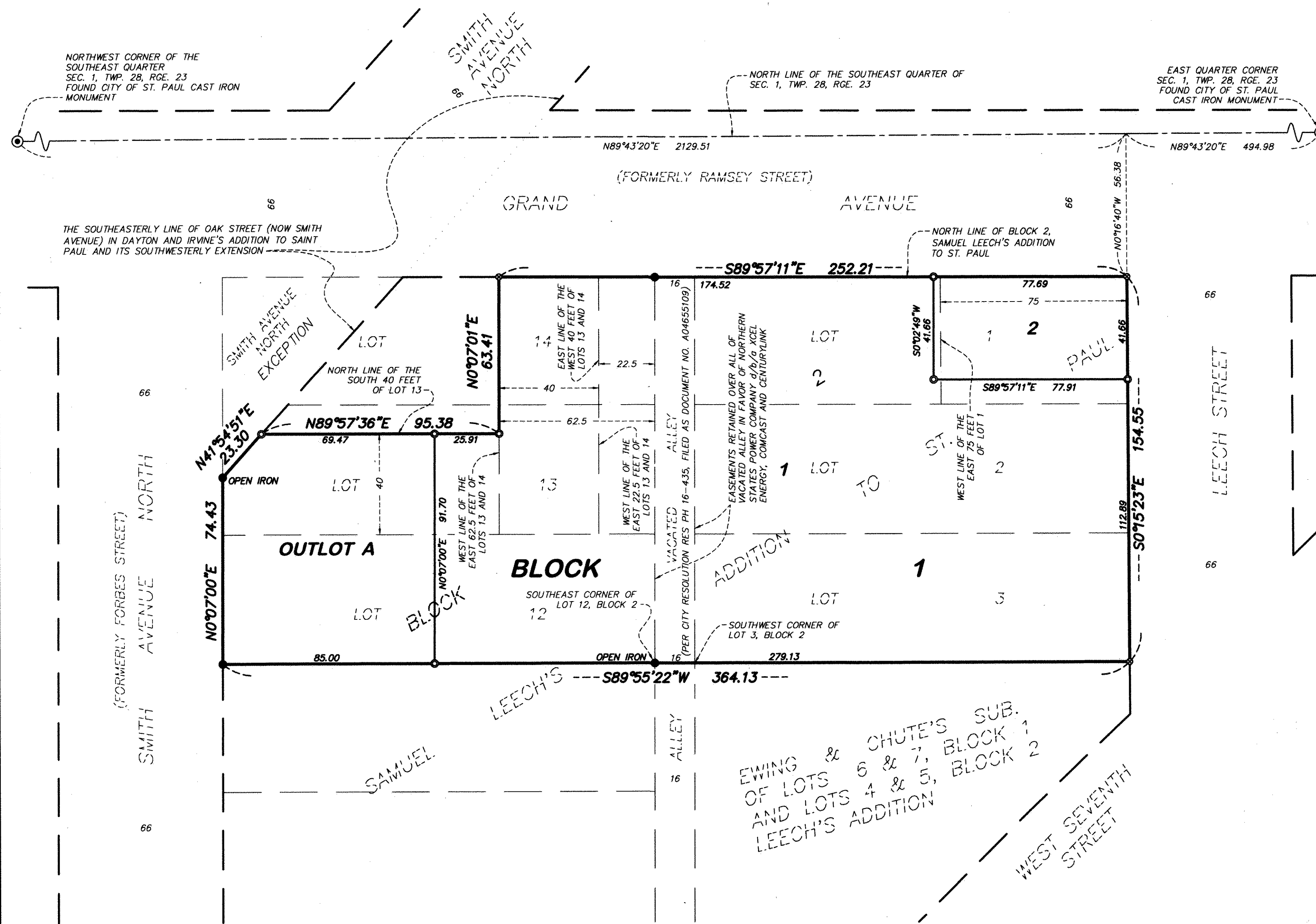


# HOTEL ADDITION



KNOW ALL MEN BY THESE PRESENTS: That BK 200 Grand, LLC, a Minnesota limited liability company, fee owner of the following described property situated in the City of Saint Paul, County of Ramsey, State of Minnesota:

- Lot 1, except the East 75 feet thereof and all of Lot 2, Block 2, Samuel Leech's Addition to St. Paul, Ramsey County, Minnesota;
- And
- The East 75 feet of Lot 1, Block 2, Samuel Leech's Addition to St. Paul, Ramsey County, Minnesota;
- And
- Lot 3, Block 2, Samuel Leech's Addition to St. Paul, Ramsey County, Minnesota;
- And
- Lot 12, Block 2, Samuel Leech's Addition to St. Paul, Ramsey County, Minnesota;
- And
- The South 40 feet of Lot 13, Block 2, Samuel Leech's Addition to St. Paul, Ramsey County, Minnesota, except the East 62.5 feet thereof, and also excepting therefrom that part conveyed to the City of Saint Paul by deed filed December 21, 1887, in Book 193 of Deeds, Page 380;
- And
- The West 40 feet of the East 62.5 feet of Lots 13 and 14, Block 2, Samuel Leech's Addition to St. Paul, Ramsey County, Minnesota;
- And
- The East 22.5 feet of Lots 13 and 14, Block 2, Samuel Leech's Addition to St. Paul, Ramsey County, Minnesota;
- And
- All that part of the alley located in Block 2, Samuel Leech's Addition to St. Paul, Ramsey County, Minnesota lying northerly of a line drawn from the southeast corner of Lot 12 to the southwest corner of Lot 3, Block 2, Samuel Leech's Addition to St. Paul;

Has caused the same to be surveyed and platted as HOTEL ADDITION.

In witness whereof said BK 200 Grand, LLC, a Minnesota limited liability company, has caused these presents to be signed by its proper officer this 24th day of April, 2017.

Signed: BK 200 Grand, LLC, a Minnesota limited liability company  
 its Chief Manager

STATE OF Minnesota  
 COUNTY OF Ramsey

The foregoing instrument was acknowledged before me this 24th day of April, 2017, by James Kelly Chief Manager of BK 200 Grand, LLC, a Minnesota limited liability company, on behalf of the company.

Kimberly Herrera  
Kimberly Herrera  
 Notary Public Anoka County, Minnesota  
 My commission expires January 31, 2020

I, Brent R. Peters, Professional Land Surveyor, do hereby certify that I have surveyed or directly supervised the survey of the property described on this plat; prepared this plat or directly supervised the preparation of this plat; that this plat is a correct representation of the boundary survey; that all mathematical data and labels are correctly designated on this plat; that all monuments depicted on this plat; and all public ways are shown and labeled on this plat.

Dated this 24th day of APRIL, 2017.

Brent R. Peters  
 Brent R. Peters, Land Surveyor  
 Minnesota License No. 44123

STATE OF Minnesota  
 COUNTY OF Hennepin

The foregoing Surveyor's Certificate was acknowledged before me this 24th day of April, 2017, by Brent R. Peters, Land Surveyor, Minnesota License No. 44123.

Kim Eleanor Hanson  
Kim Eleanor Hanson  
 Notary Public Anoka County, Minnesota  
 My commission expires January 31, 2020

CITY OF SAINT PAUL

I do hereby certify that on the 19 day of April, 2017, the City Council of the City of Saint Paul, Minnesota, approved this plat.

Shari Moore Clerk

DEPARTMENT OF PROPERTY RECORDS AND REVENUE

Pursuant to Minnesota Statutes, Section 505.021, Subd. 9, taxes payable in the year \_\_\_\_\_ on the land hereinbefore described have been paid. Also, pursuant to Minnesota Statutes, Section 272.12, there are no delinquent taxes and transfer entered this \_\_\_\_\_ day of \_\_\_\_\_, 2017.

Department of Property Records and Revenue By: \_\_\_\_\_ Deputy

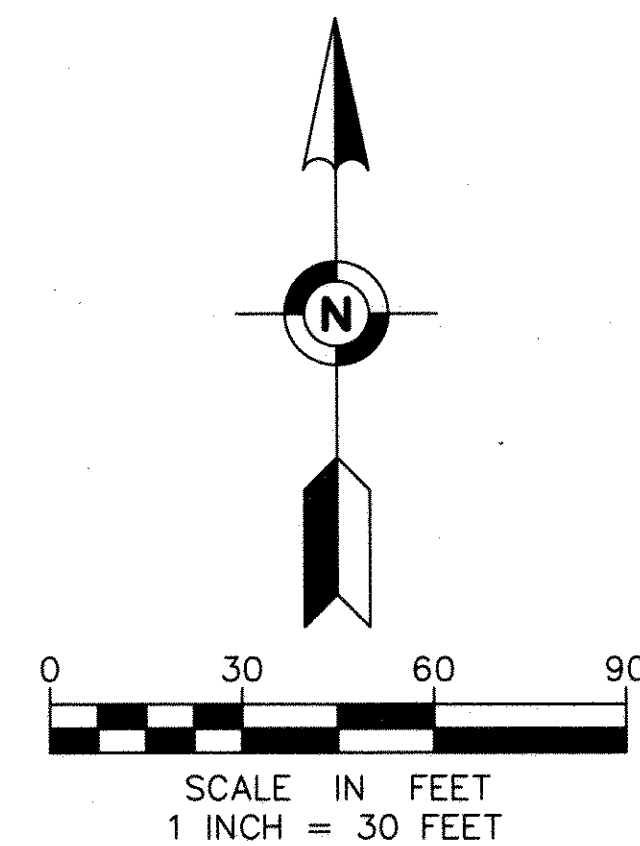
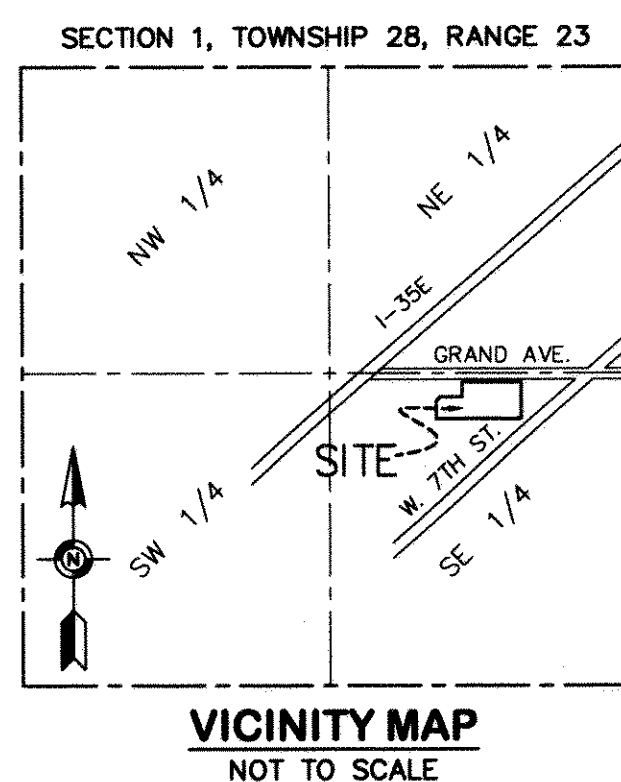
COUNTY SURVEYOR Pursuant to Minnesota Statutes, Section 383A.42, this plat is approved this 11th day of May, 2017.

Craig W. Hazman  
 Craig W. Hazman, Land Surveyor  
 Ramsey County Surveyor

COUNTY RECORDER County of Ramsey, State of Minnesota

I hereby certify that this plat of HOTEL ADDITION was filed in the office of the County Recorder for public record this 11th day of MAY, 2017, at 3:26 o'clock P. M., and was duly filed in Book 127 of Plats, Page 46 as Document Number 4658749.

Deputy County Recorder



For the purposes of this plat, the north line of Block 2, SAMUEL LEECH'S ADDITION TO ST. PAUL, is assumed to have a bearing of South 89 degrees 57 minutes 11 seconds East

- DENOTES 1/2 INCH IRON PIPE MONUMENT FOUND AND MARKED WITH LICENSE NUMBER 15480, UNLESS OTHERWISE SHOWN
- FOUND PK NAIL
- DENOTES 1/2 INCH BY 14 INCH IRON PIPE MONUMENT SET AND MARKED WITH LICENSE NUMBER 44123