

MAPLEWOOD MALL SECOND ADDITION

KNOW ALL PERSONS BY THESE PRESENTS: That Maplewood Square Associates, L.L.C., a Minnesota limited liability company, owner of the following described property situated in the City of Maplewood, County of Ramsey, State of Minnesota, to wit:

Lot 14, Block 1, MAPLEWOOD MALL ADDITION, Ramsey County, Minnesota.

Has caused the same to be surveyed and platted as MAPLEWOOD MALL SECOND ADDITION and does hereby donate and dedicate to the public for public use forever the public ways and the drainage and utility easements as shown on this plat.

In witness whereof said Maplewood Square Associates, L.L.C., a Minnesota limited liability company, has caused these presents to be signed by its proper officer this 23 day of June 2016

SIGNED: MAPLEWOOD SQUARE ASSOCIATES, L.L.C.

By Barbara Gervais Secretary
Barbara Gervais Secretary

STATE OF Minnesota
COUNTY OF Ramsey
The foregoing instrument was acknowledged before me this 23 day of June 2016 by Barbara Gervais, Secretary of Maplewood Square Associates, L.L.C., a Minnesota limited liability company on behalf of the company.

Pamela M. McKee Pamela M McKee
(Signature) (Name Printed)

Notary Public, Ramsey County, Minnesota
My Commission Expires 01-31-2020

I, Craig W. Morse, Professional Land Surveyor, do hereby certify that I have surveyed or directly supervised the survey of the property described on this plat; prepared this plat or directly supervised the preparation of this plat; that this plat is a correct representation of the boundary survey; that all mathematical data and labels are correctly designated on this plat; that all monuments depicted on this plat have been correctly set; that all water boundaries and wet lands, as defined in Minnesota Statutes, Section 503.01, Subd. 3, as of the date of the surveyor's certification are shown and labeled on this plat; and all public ways are shown and labeled on this plat.

Dated this 22nd day of JUNE 2016

Craig W. Morse
Craig W. Morse, Professional Land Surveyor
Minnesota License No. 23021

STATE OF MINNESOTA
COUNTY OF Hennepin
The foregoing Surveyor's Certificate was acknowledged before me this 22nd day of June 2016, by Craig W. Morse, a Professional Land Surveyor.

Shannon Sinnen Shannon Sinnen
(Signature) (Name Printed)

Notary Public, Carver County, Minnesota
My Commission Expires January 31, 2018

CITY COUNCIL
City of Maplewood
We do hereby certify that on the 11th day of April, 2016, the City Council of the City of Maplewood Minnesota, approved this plat. Also, the conditions of Minnesota Statutes, Section 505.03, Subd. 2, have been fulfilled.

Novo Slaw Mayor
Karen Haag City Clerk

DEPARTMENT OF PROPERTY RECORDS AND REVENUE
Pursuant to Minnesota Statutes, Section 505.021, Subd. 9, taxes payable in the year _____ on the land hereinbefore described have been paid. Also, pursuant to Minnesota Statutes, Section 272.12, there are no delinquent taxes and transfer entered this _____ day of _____ 20____

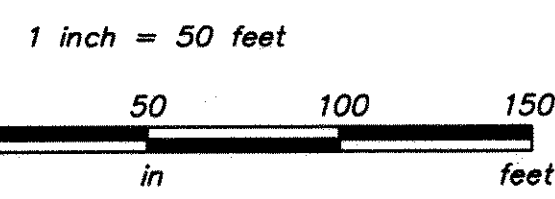
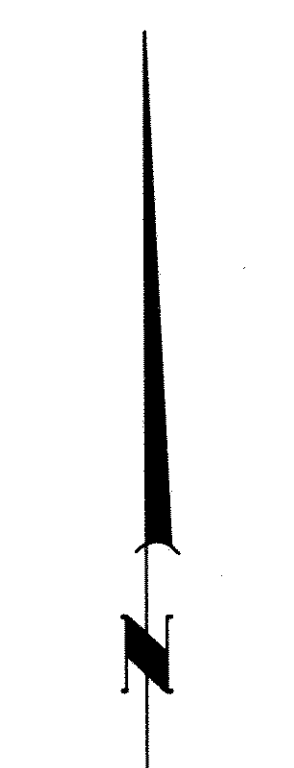
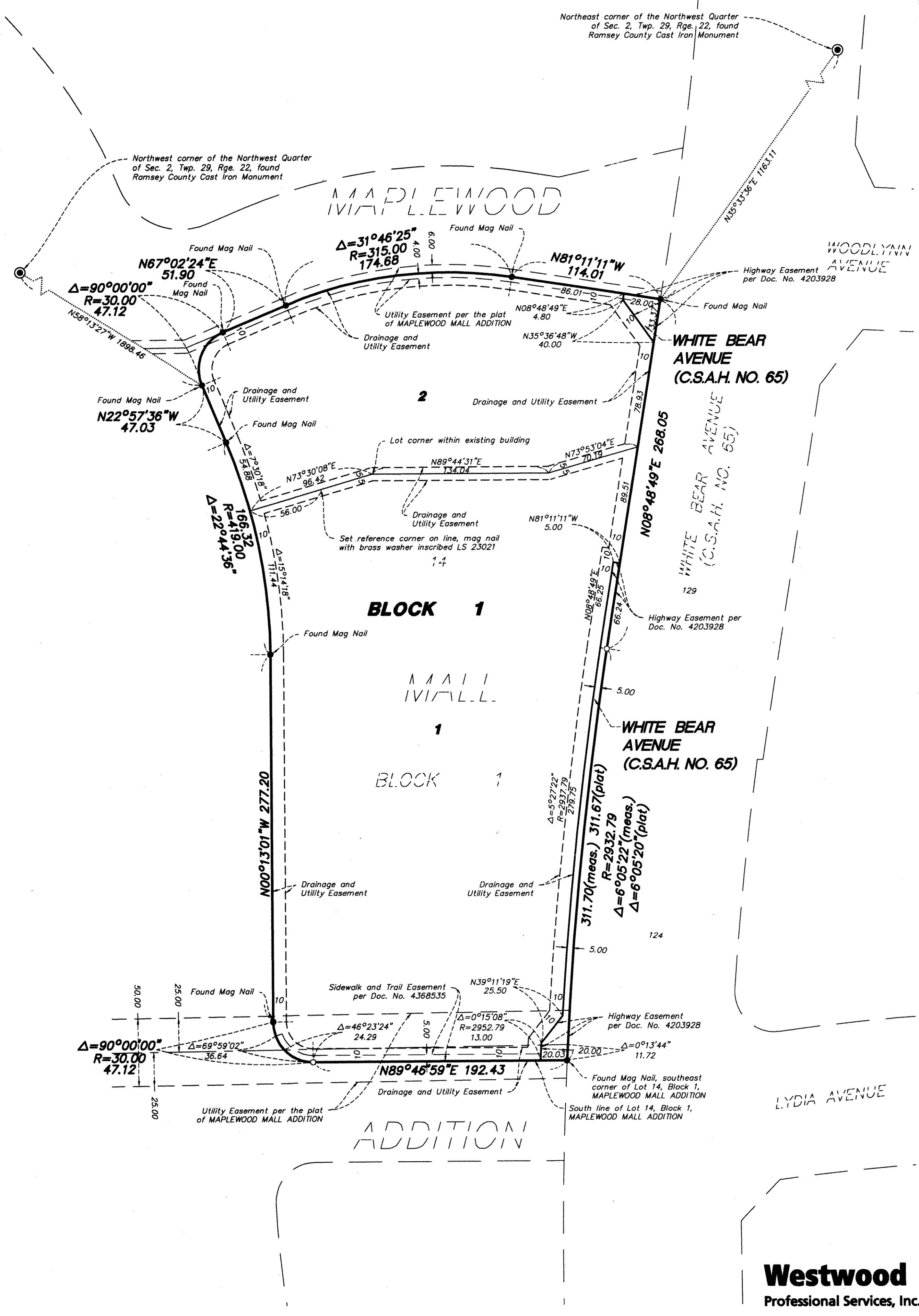
Department of Property Records and Revenue
By _____ Deputy

COUNTY SURVEYOR
Pursuant to MN Statutes, Section 383A.42, this plat is approved this 29th day of June 2016

Craig W. Hinzmah
Craig W. Hinzmah, L.S.
Ramsey County Surveyor

COUNTY RECORDER, County of Ramsey, State of Minnesota
I hereby certify that this plat of MAPLEWOOD MALL SECOND ADDITION was filed in the office of the County Recorder for public record on this 10 day of March 2017 at 2 o'clock P.M., and was duly filed in Book 127 of Plats, Page 45 as Document Number 4650305

Deputy County Recorder



The orientation of this bearing system is based on the south line of Lot 14, Block 1, MAPLEWOOD MALL ADDITION, which is assumed to bear N 89°46'59\"/>

- Denotes set mag nail with brass washer inscribed LS 23021. Any required interior monument location on this plat with no monument symbol shown, indicates an interior plat monument that will be set, and which shall be in place within one year after the recording of this plat. Said monuments will be a mag nail with brass washer inscribed LS 23021.
- Denotes iron monument found and marked as shown.

(plat) Denotes dimension per the plat of MAPLEWOOD MALL ADDITION

