

CARDINAL GLEN

Folz, Freeman, Erickson, Inc.
LAND PLANNING • SURVEYING • ENGINEERING



12445 55TH STREET NORTH
STILLWATER, MINNESOTA 55082
Phone (651) 439-8833 www.ffe-inc.com

OWNER'S CERTIFICATE

KNOW ALL PERSONS BY THESE PRESENTS: That D & T Development, LLP, a Minnesota limited liability partnership, owner of the following described property situated in the City of North Saint Paul, County of Ramsey and State of Minnesota;

Lot 25, Block 1, Waterview Hill and
Outlot A, Waterview Hill

And

The West Half of Club Lane, as dedicated on the plat of Country Club Heights, vacated by Resolution No. 47, adopted October 6, 1947, filed October 21, 1947, as Document No. 1161681, in Book 262, page 231, lying Southerly of the Northerly line of Lot 20, Block 1, Country Club Heights extended Easterly, and lying Northerly of the Southerly line of Lot 22, Block 1, Country Club Heights, extended Easterly, Ramsey County, Minnesota.

Has caused the same to be surveyed and platted as CARDINAL GLEN and does hereby dedicate or donate to the public for public use forever the public drainage and utility easement(s) as shown on this plat.

In witness whereof D & T Development, LLP, a Minnesota limited liability partnership, has caused these presents to be signed by its proper officer this 27th day of OCTOBER, 2015.

Signed: D & T Development, LLP

Thomas M. Wiener
Thomas M. Wiener, General Partner

STATE OF MINNESOTA
COUNTY OF WASHINGTON

The foregoing instrument was acknowledged before me this 27th day of OCTOBER, 2015 by Thomas M. Wiener, General Partner of D & T Development, LLP, a Minnesota limited liability partnership, on behalf of the partnership.

Jennifer Lynn Livingston
Sign

JENNIFER LYNN LIVINGSTON
Print

Notary Public Minnesota
My commission expires JAN. 31, 2018

SURVEYOR'S CERTIFICATE AND ACKNOWLEDGMENT

I, Timothy J. Freeman, Licensed Land Surveyor, do hereby certify that I have surveyed or directly supervised the survey of the property described on this plat; prepared this plat or directly supervised the preparation of this plat; that this plat is a correct representation of the boundary survey; that all mathematical data and labels are correctly designated on this plat; that all monuments depicted on this plat have been correctly set; that all monuments indicated on this plat will be correctly set within one year; that all water boundaries and wet lands, as defined in Minnesota Statutes, Section 505.01, Subd. 3, as of the date of the surveyor's certification are shown and labeled on this plat; and all public ways are shown and labeled on this plat.

Dated this 27th day of OCTOBER, 2015.

Timothy J. Freeman
Timothy J. Freeman, Licensed Land Surveyor
Minnesota License No. 16989

STATE OF MINNESOTA
COUNTY OF WASHINGTON

The foregoing Surveyor's Certificate was acknowledged before me this 27th day of OCTOBER, 2015 by Timothy J. Freeman, Licensed Land Surveyor.

Jennifer Lynn Livingston
Sign

JENNIFER LYNN LIVINGSTON
Print

Notary Public Minnesota
My commission expires JAN. 31, 2018

CITY OF NORTH SAINT PAUL

We do hereby certify that on the 29th day of OCTOBER, 2015, the City council of the City of North Saint Paul, Minnesota, approved this plat. Also, the conditions of Minnesota Statutes, Section 505.03, Subd. 2, have been fulfilled.

Michael R. Kunt
Mayor
[Signature]
Clerk

DEPARTMENT OF PROPERTY RECORDS AND REVENUE

Pursuant to Minnesota Statutes Section 505.021, Subd. 9, taxes payable in the year 2015 on the land hereinbefore described have been paid. Also, pursuant to Minnesota Statutes, Section 272.12, there are no delinquent taxes and transfer entered this 18th day of December, 2015.

Christopher Samuel Treasurer/Auditor
Department of Property Records and Revenue
[Signature]
By Deputy

RAMSEY COUNTY SURVEYOR

Pursuant to Minnesota Statutes, Section 383A.42, this plat is approved this 21st day of December, 2015.

Craig W. Hinzman
Craig W. Hinzman, P.S.
Ramsey County Surveyor

COUNTY RECORDER, COUNTY OF RAMSEY, STATE OF MINNESOTA

I hereby certify that this plat of CARDINAL GLEN was filed in the office of the County Recorder for public record on this 21st day of December, 2015 at 12 o'clock P.M. and was duly filed in Book 127 of Plats, Pages 12 and 13 as Document Number 4589291.

Deputy County Recorder

REGISTRAR OF TITLES, COUNTY OF RAMSEY, STATE OF MINNESOTA

I hereby certify that this plat of CARDINAL GLEN was filed in the office of the Registrar of Titles for public record on this 21 day of DECEMBER, 2015 at 12 o'clock P.M. and was duly filed in Book 49 of Plats, Pages 34 and 35 as Document Number 2547854.

Deputy Registrar of Titles

CARDINAL GLEN

Folz, Freeman, Erickson, Inc.
LAND PLANNING • SURVEYING • ENGINEERING



12445 55TH STREET NORTH
STILLWATER, MINNESOTA 55082
Phone (651) 439-8833 www.ffe-inc.com

LEGEND

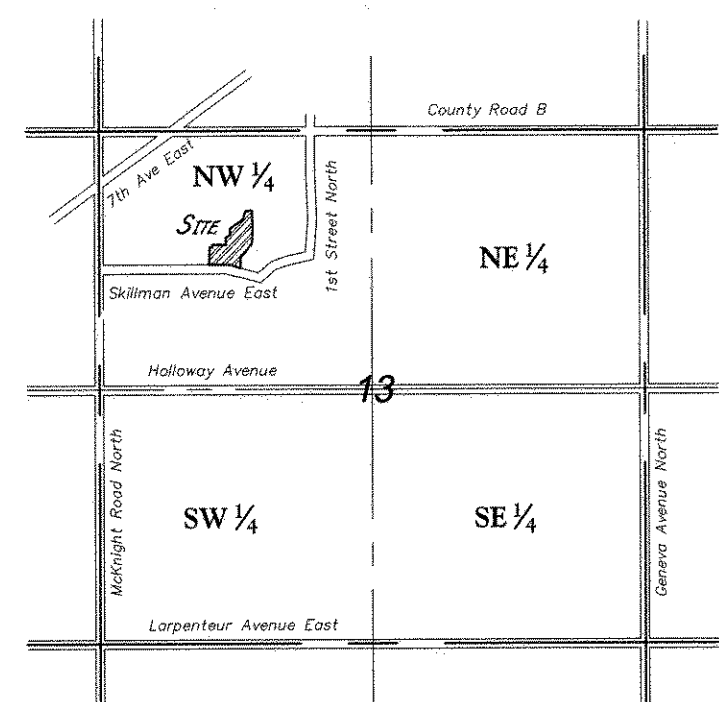
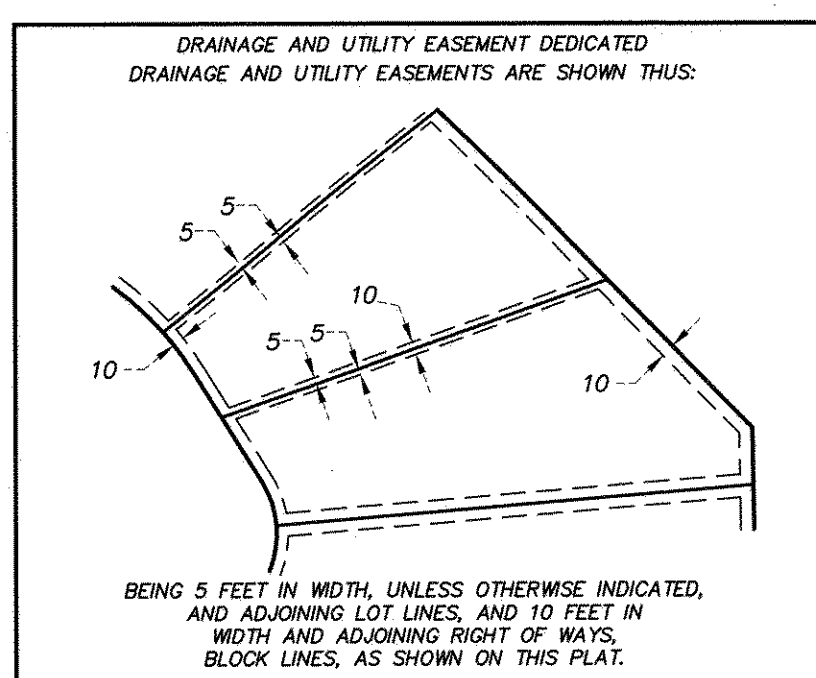
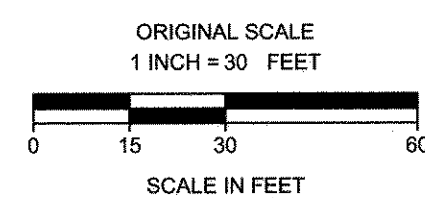
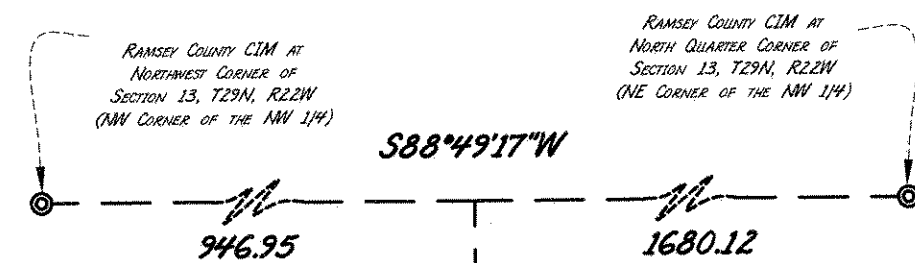
- DENOTES SET 1/2 INCH DIA. BY 16 INCH IRON PIPE MONUMENT MARKED WITH A PLASTIC CAP INSCRIBED "FREEMAN LS 16989," UNLESS SHOWN OTHERWISE
- DENOTES FOUND MONUMENT, SIZE AND MARKINGS AS INDICATED
- DENOTES BOUNDARY LINE
- DENOTES BLOCK LINE
- DENOTES LOT LINE
- - - DENOTES ADJOINING LOT LINE
- - - DENOTES ADJOINING EASEMENT LINE

NOTES

BEARING ORIENTATION IS BASED ON THE RAMSEY COUNTY COORDINATE SYSTEM, NAD83, 1986 ADJUSTMENT.

THE RECORDED BEARINGS ON THE PLAT OF WATERVIEW HILL ARE ROTATED 1°11'15" CLOCKWISE FROM THE MEASURED BEARINGS IN THIS SURVEY.

ANY REQUIRED INTERIOR MONUMENT LOCATION ON THIS PLAT WITH NO MONUMENT SYMBOL SHOWN, INDICATES AN INTERIOR PLAT MONUMENT AS DESCRIBED ABOVE THAT WILL BE SET, AND WHICH SHALL BE IN PLACE WITHIN ONE YEAR AFTER THE RECORDING OF THIS PLAT.



Vicinity Map
Section 13 - T29N - R22W
North Saint Paul,
Ramsey County, Minnesota

