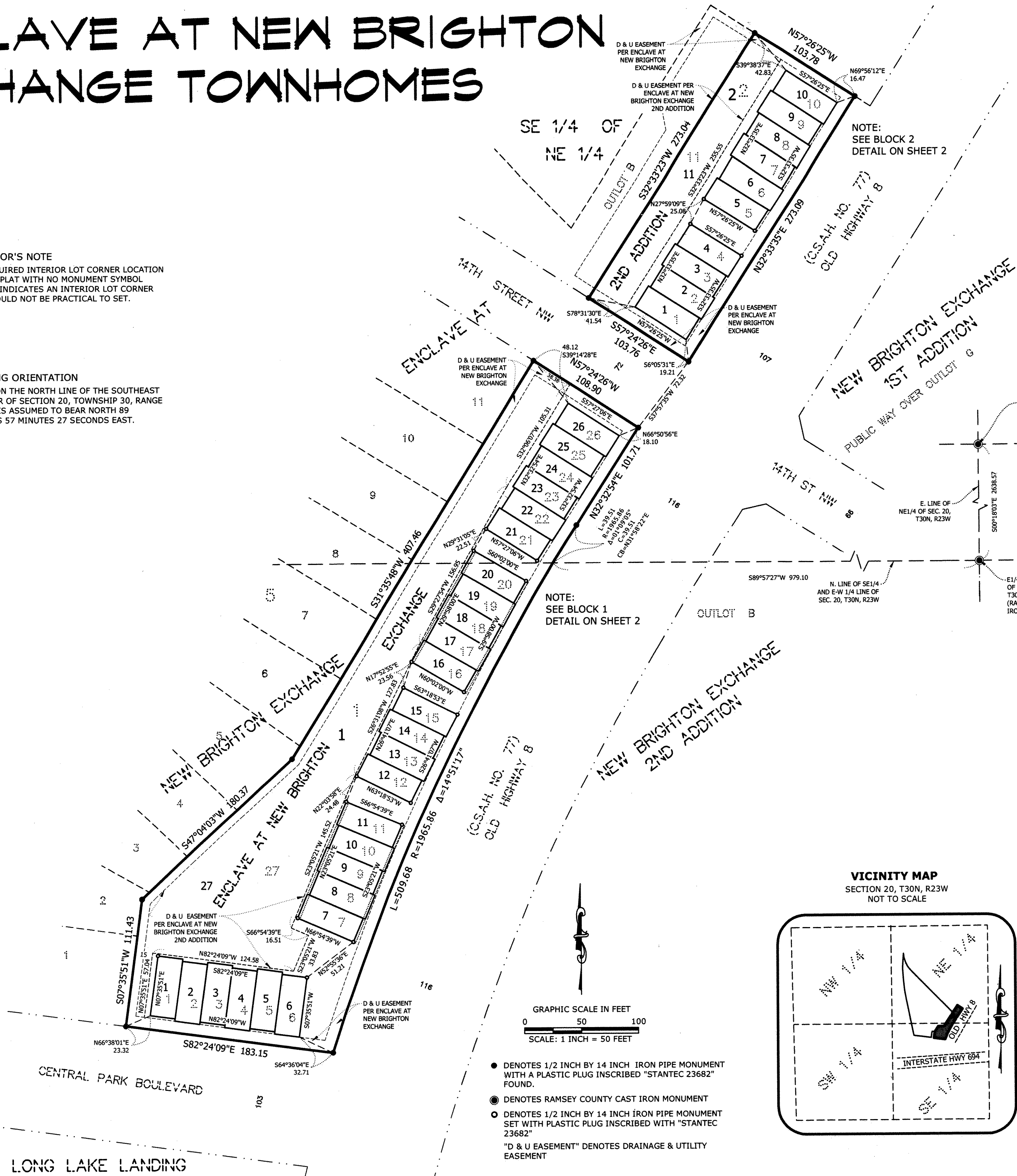


# ENCLAVE AT NEW BRIGHTON EXCHANGE TOWNHOMES

**SURVEYOR'S NOTE**  
 ANY REQUIRED INTERIOR LOT CORNER LOCATION ON THIS PLAT WITH NO MONUMENT SYMBOL SHOWN, INDICATES AN INTERIOR LOT CORNER THAT WOULD NOT BE PRACTICAL TO SET.

**BEARING ORIENTATION**  
 BASED ON THE NORTH LINE OF THE SOUTHEAST QUARTER OF SECTION 20, TOWNSHIP 30, RANGE 23 AND IS ASSUMED TO BEAR NORTH 89 DEGREES 57 MINUTES 27 SECONDS EAST.



- DENOTES 1/2 INCH BY 14 INCH IRON PIPE MONUMENT WITH A PLASTIC PLUG INSCRIBED "STANTEC 23682" FOUND.
- ⊙ DENOTES RAMSEY COUNTY CAST IRON MONUMENT
- DENOTES 1/2 INCH BY 14 INCH IRON PIPE MONUMENT SET WITH PLASTIC PLUG INSCRIBED WITH "STANTEC 23682"
- "D & U EASEMENT" DENOTES DRAINAGE & UTILITY EASEMENT

KNOW ALL MEN BY THESE PRESENTS: That Pulte Homes of Minnesota, LLC, a Minnesota limited liability company, fee owner of the following described property situated in the City of New Brighton, County of Ramsey, State of Minnesota:

All of ENCLAVE AT NEW BRIGHTON EXCHANGE 2ND ADDITION, record plat, Ramsey County, Minnesota. Has caused the same to be surveyed and platted as ENCLAVE AT NEW BRIGHTON EXCHANGE TOWNHOMES.

In witness whereof said Pulte Homes of Minnesota, LLC, a Minnesota limited liability company, has caused these presents to be signed by its proper officer this 15<sup>th</sup> day of September, 2015.

Signed: Pulte Homes of Minnesota, LLC  
 Graham Epperson, Chief Manager

STATE OF MINNESOTA  
 COUNTY OF Hennepin  
 The foregoing instrument was acknowledged before me this 15<sup>th</sup> day of September, 2015, by Graham Epperson, Chief Manager of Pulte Homes of Minnesota, LLC, a Minnesota limited liability company, on behalf of the company.

Maikke Heu (Notary Signature) Maikke Heu (Notary Printed Name)

NOTARY PUBLIC Anoka COUNTY, MINNESOTA  
 MY COMMISSION EXPIRES 11/31/17

**SURVEYOR**  
 I Linda H. Brown, Professional Land Surveyor, do hereby certify that I have surveyed or directly supervised the survey of the property described on this plat; prepared this plat or directly supervised the preparation of this plat; that this plat is a correct representation of the boundary survey; that all mathematical data and labels are correctly designated on this plat; that all monuments indicated on this plat will be correctly set within one year, as defined in Minnesota Statutes Section 505.021, Subd. 10; that the outside boundary lines are correctly designated on this plat; that all water boundaries and wet lands, as defined in Minnesota Statutes, Section 505.01, Subd. 3, as of the date of the surveyor's certification are shown and labeled on this plat; and all public ways are shown and labeled on this plat.

Dated this 15<sup>th</sup> day of SEPTEMBER, 2015.

Linda H. Brown  
 LINDA H. BROWN  
 LICENSED LAND SURVEYOR  
 MINNESOTA LICENSE NUMBER 23682

STATE OF MINNESOTA  
 COUNTY OF STEARN  
 The foregoing instrument was acknowledged before me this 15<sup>th</sup> day of SEPTEMBER, 2015, by Linda H. Brown, Licensed Land Surveyor, Minnesota License Number 23682.

Ryan E. Henneman (Notary Signature) Ryan E. HENNEMAN (Notary Printed Name)

NOTARY PUBLIC STEARNS COUNTY, MINNESOTA  
 MY COMMISSION EXPIRES 01/31/2017

**CITY OF NEW BRIGHTON**  
 We do hereby certify that on the 15<sup>th</sup> day of September, 2015, the City Council of the City of New Brighton, Minnesota, approved this plat. Also, the conditions of Minnesota Statutes, Section 505.03, Subd. 2 have been fulfilled.

Dave Jacobson, Mayor Dana Jalk, City Manager

**DEPARTMENT OF PROPERTY RECORDS AND REVENUE**  
 Pursuant to Minnesota Statutes, Section 505.021, Subd. 9, taxes payable in the year \_\_\_\_\_ on the land hereinbefore described have been paid. Also, pursuant to Minnesota Statutes, Section 272.12, there are no delinquent taxes and transfer entered this \_\_\_\_\_ day of \_\_\_\_\_, 20\_\_\_\_.

Department of Property Records and Revenue  
 By \_\_\_\_\_, Deputy

**RAMSEY COUNTY SURVEYOR**  
 Pursuant to Minnesota Statutes, Section 383A.42, this plat is approved this 14<sup>th</sup> day of October, 2015.

Craig W. Hinzman  
 Craig W. Hinzman, L.S.  
 Ramsey County Surveyor

**REGISTRAR OF TITLES, COUNTY OF RAMSEY, STATE OF MINNESOTA**  
 I hereby certify that this plat of ENCLAVE AT NEW BRIGHTON EXCHANGE TOWNHOMES was filed in the office of the Registrar of Titles for public record on this 16<sup>th</sup> day of October, 2015, at 1 o'clock P.M. and was duly filed in Book 49 of Plats, Pages 32, and 33, as Document Number 2542682.

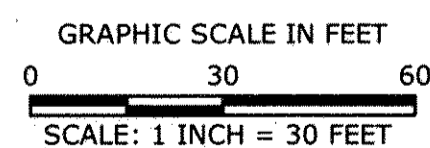
Deputy Registrar of Titles



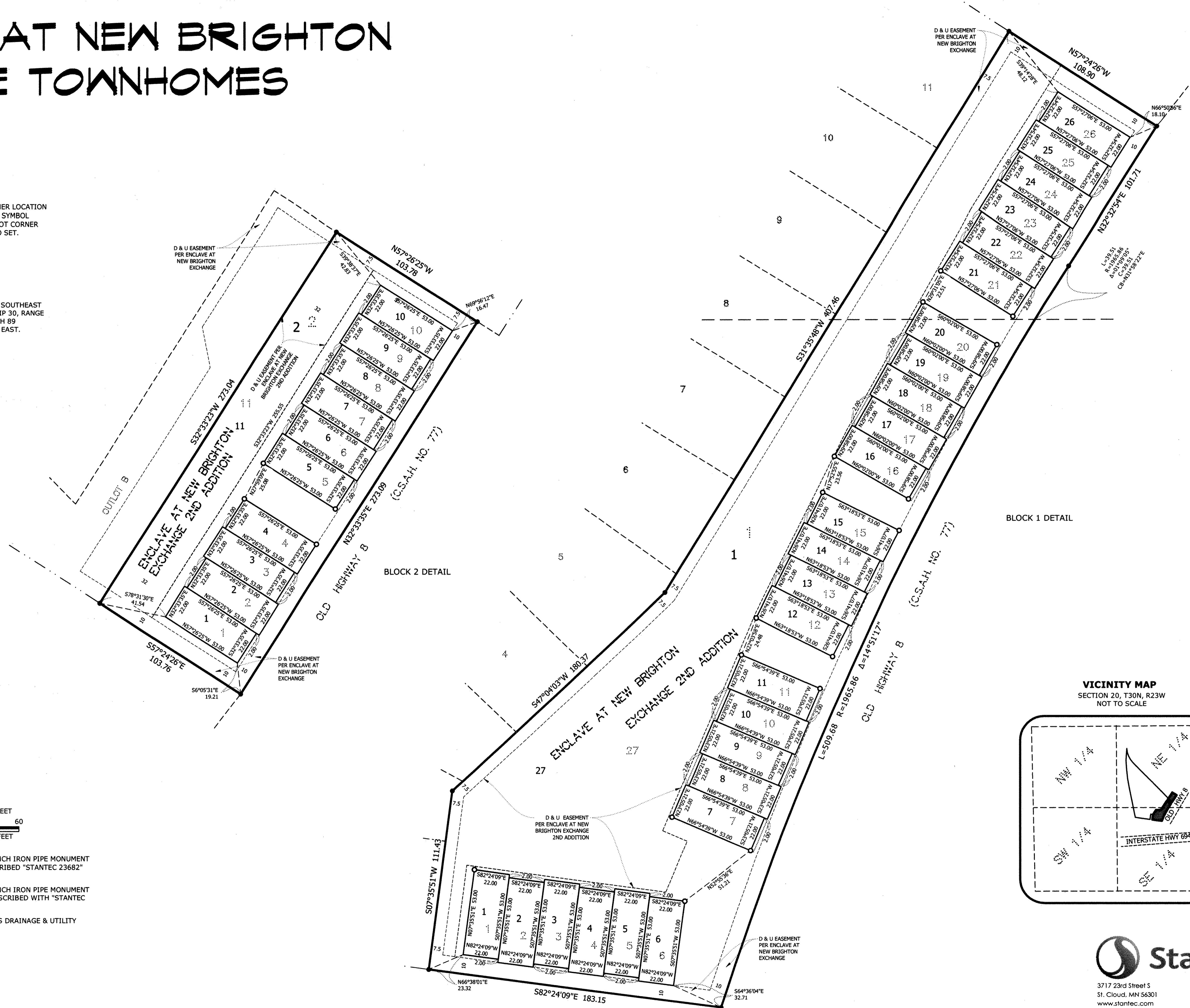
# ENCLAVE AT NEW BRIGHTON EXCHANGE TOWNHOMES

**SURVEYOR'S NOTE**  
 ANY REQUIRED INTERIOR LOT CORNER LOCATION ON THIS PLAT WITH NO MONUMENT SYMBOL SHOWN, INDICATES AN INTERIOR LOT CORNER THAT WOULD NOT BE PRACTICAL TO SET.

**BEARING ORIENTATION**  
 BASED ON THE NORTH LINE OF THE SOUTHEAST QUARTER OF SECTION 20, TOWNSHIP 30, RANGE 23 AND IS ASSUMED TO BEAR NORTH 89 DEGREES 57 MINUTES 27 SECONDS EAST.



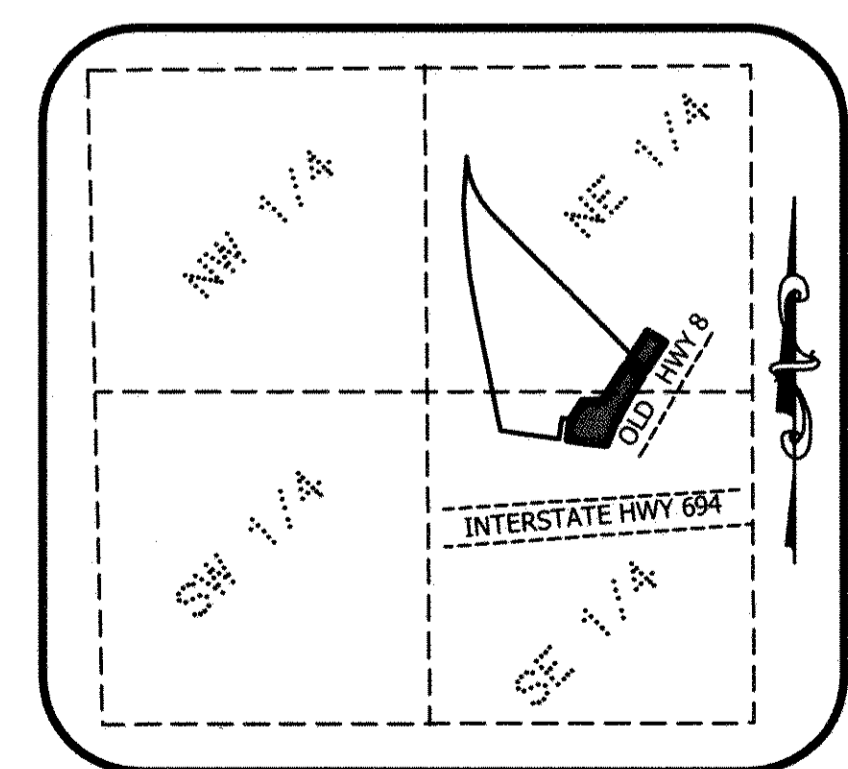
- DENOTES 1/2 INCH BY 14 INCH IRON PIPE MONUMENT WITH A PLASTIC PLUG INSCRIBED "STANTEC 23682" FOUND.
  - DENOTES 1/2 INCH BY 14 INCH IRON PIPE MONUMENT SET WITH PLASTIC PLUG INSCRIBED WITH "STANTEC 23682"
- "D & U EASEMENT" DENOTES DRAINAGE & UTILITY EASEMENT



BLOCK 1 DETAIL

BLOCK 2 DETAIL

**VICINITY MAP**  
 SECTION 20, T30N, R23W  
 NOT TO SCALE



**Stantec**  
 3717 23rd Street S  
 St. Cloud, MN 56301  
 www.stantec.com