

SERENE HILLS ESTATES PLAT FIVE

KNOW ALL MEN BY THESE PRESENTS: That Lexington Estates Townhomes Association Two, Inc., a Minnesota non-profit corporation, fee owner of the following described property situated in the City of Shoreview, County of Ramsey, State of Minnesota:

Lot 22, Block 1, SERENE HILLS ESTATES PLAT TWO

Has caused the same to be surveyed and platted as SERENE HILLS ESTATES PLAT FIVE and does hereby dedicate to the public for public use forever the public way as shown on this plat.

In witness whereof said Lexington Estates Townhomes Association Two, Inc., a Minnesota non-profit corporation, has caused these presents to be signed by its proper officer this 20th day of January 2015

Signed: Lexington Estates Townhomes Association Two, Inc.
E. Dale Birkeland President
E. Dale Birkeland

STATE OF MINNESOTA
COUNTY OF Anoka

The foregoing instrument was acknowledged before me this 20th day of January 2015, by E. Dale Birkeland as President of Lexington Estates Townhomes Association Two, Inc., a Minnesota non-profit corporation, on behalf of the corporation.

Nicole A. Johnson
Nicole A. Johnson
Notary Public, Anoka County, Minnesota
My Commission Expires January 31, 2020

I, Jason E. Rud, Licensed Land Surveyor, do hereby certify that I have surveyed or directly supervised the survey of the property described on this plat; prepared this plat or directly supervised the preparation of this plat; that this plat is a correct representation of the boundary survey; that all mathematical data and labels are correctly designated on this plat; that all monuments depicted on this plat have been correctly set; that all water boundaries and wet lands, as defined in Minnesota Statutes, Section 505.01, Subd. 3, as of the date of the surveyor's certification are shown and labeled on this plat; and all public ways are shown and labeled on this plat.

Dated this 19th day of JANUARY 2015

Jason E. Rud
Jason E. Rud, Land Surveyor
Minnesota License No. 41578

STATE OF MINNESOTA
COUNTY OF Anoka

The foregoing Surveyor's Certificate was acknowledged before me this 19th day of January 2015, by Jason E. Rud, a Licensed Land Surveyor.

Nicole A. Johnson
Nicole A. Johnson
Notary Public, Anoka County, Minnesota
My Commission Expires January 31, 2020

CITY OF SHOREVIEW

We do hereby certify that on the _____ day of _____, 20____ the City Council of the City of Shoreview, Minnesota, approved this plat. Also, the conditions of Minnesota Statutes, Section 505.03, Subd. 2, have been fulfilled.

Andrea Martin Mayor *TJ Co* City Clerk

DEPARTMENT OF PROPERTY RECORDS AND REVENUE

Pursuant to Minnesota Statutes, Section 505.021, Subd. 9, taxes payable in the year _____ on the land hereinbefore described have been paid. Also, pursuant to Minnesota Statutes, Section 272.12, there are no delinquent taxes and transfers entered this _____ day of _____, 20____.

Property Records and Revenue _____ Director By _____ Deputy

County Surveyor

I hereby certify that this plat complies with the requirements of Minnesota Statutes, Section 505.021, and is approved pursuant to Minnesota Statutes, Section 383A.42, this 19th day of April 2015.

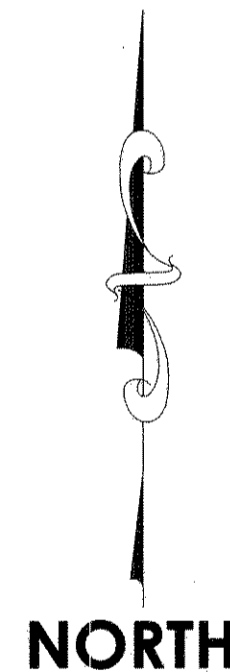
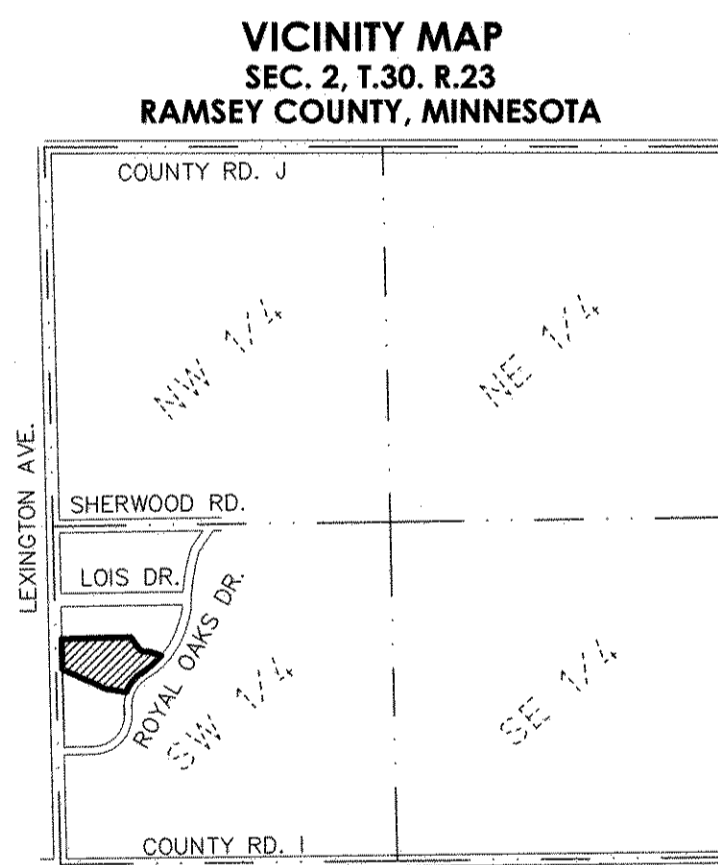
Craig W. Hinzman
Craig W. Hinzman, L.S.
Ramsey County Surveyor

County Recorder

County of Ramsey, State of Minnesota

I hereby certify that this plat of SERENE HILLS ESTATES PLAT FIVE was filed in the office of the County Recorder for public record on this 29 day of APRIL 2015, at _____ o'clock A.M., and was duly filed in Book 126 of Plats, Page 47, as Document Number 4553699.

Deputy County Recorder

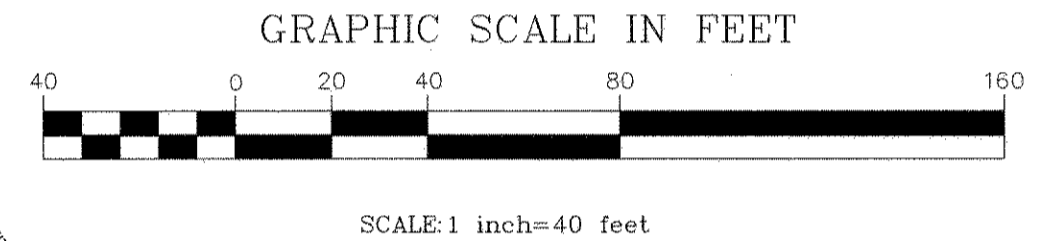
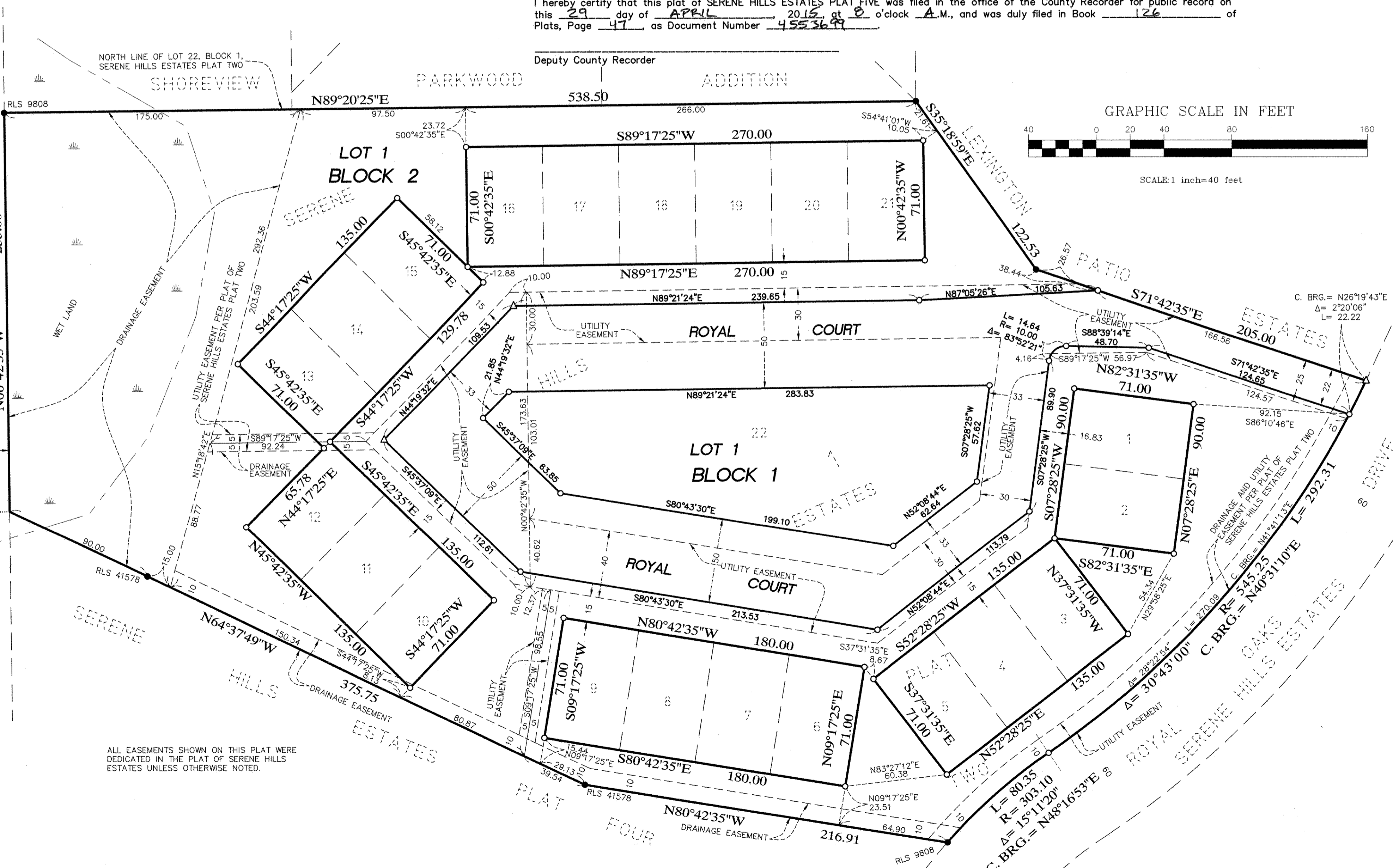


- △ Denotes set PK nail with metal disk marked RLS 41578.
- Denotes set 1/2 inch by 14 inch iron pipe monument marked RLS 41578.
- Denotes a 1/2 inch iron pipe monument found, as labeled, unless otherwise noted.

For the purposes of this plat the north line of Lot 22, Block 1, SERENE HILLS ESTATES PLAT TWO, Ramsey County, Minnesota, is assumed to have a bearing of North 89 degrees 20 minutes 25 seconds East.

WEST QUARTER CORNER
SEC. 2, T.30, R.23
RAMSEY COUNTY CAST
IRON MONUMENT

SOUTHWEST CORNER
SEC. 2, T.30, R.23
RAMSEY COUNTY CAST
IRON MONUMENT



ALL EASEMENTS SHOWN ON THIS PLAT WERE DEDICATED IN THE PLAT OF SERENE HILLS ESTATES UNLESS OTHERWISE NOTED.