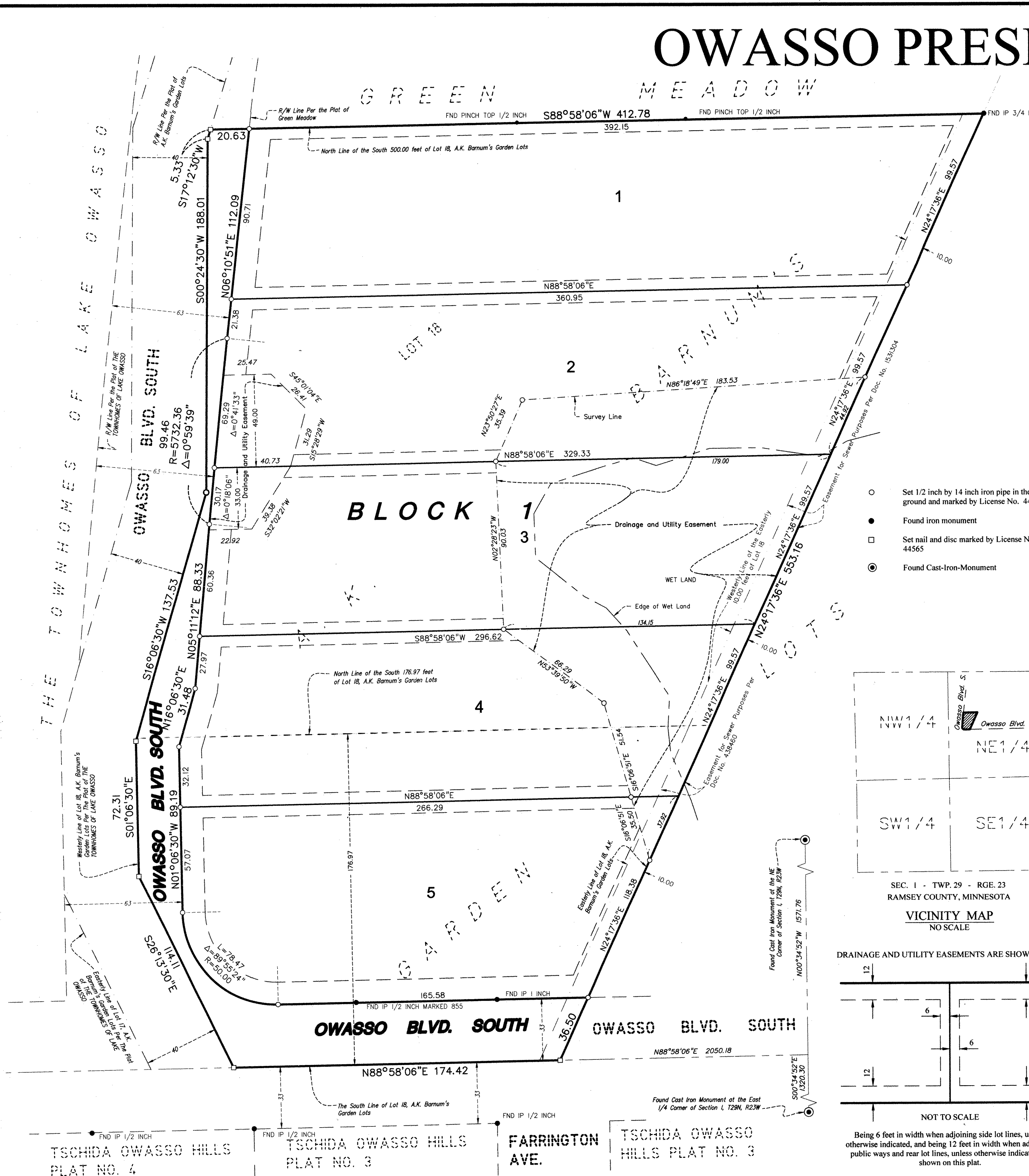


OWASSO PRESERVE

GREEN MEADOW



KNOW ALL PERSONS BY THESE PRESENTS: That Landmark of Roseville, LLC, a Minnesota limited liability company, fee owner, of the following described property situated in the City of Roseville, County of Ramsey, State of Minnesota:

That part of the South 500.00 Feet of Lot 18, A. K. Barnum's Garden Lots according to the recorded plat thereof, which lies north of the south 176.97 feet thereof.
 Together with:
 The South 176.97 feet of Lot 18, A. K. Barnum's Garden Lots, according to the recorded plat thereof.

Has caused the same to be surveyed and platted as OWASSO PRESERVE and does hereby donate and dedicate to the public for public use forever the public ways and easements for drainage and utility purposes as shown on this plat.

In witness whereof said Landmark of Roseville, LLC, a Minnesota limited liability company, has caused these presents to be signed by its proper officer this 21st day of August, 2014.

Signed: Landmark of Roseville, LLC
Nathan Fair Chief Manager
 Nathan Fair

STATE OF MINNESOTA
 COUNTY OF HENNEPIN
 The foregoing instrument was acknowledged before me this 21st day of AUGUST, 2014, by NATHAN, Chief Manager, of Landmark of Roseville, LLC, a Minnesota limited liability company, on behalf of the company.

Stephanie Marie Moline Groth
 Notary Public, Hennepin County, Minnesota
 My Commission Expires: 1/31/2015

LORI L. KRUEGER-KOPISCHKE
 Printed Name

SURVEYORS CERTIFICATE
 I, Rory L. Synsteliem, Professional Land Surveyor, do hereby certify that I have surveyed or directly supervised the survey of the property described on this plat; prepared this plat or directly supervised the preparation of this plat; that this plat is a correct representation of the boundary survey; that all mathematical data and labels are correctly designated on this plat; that all monuments on the exterior boundary have been set and that all other monuments indicated on this plat will be correctly set within one year of the recording of this plat; that all water boundaries and wet lands as defined in Minnesota Statutes, Section 505.01, Subd. 3, as of the date of the surveyor's certification are shown and labeled on this plat; and all public ways are shown and labeled on this plat.

Dated this 20th day of AUGUST, 2014.

Rory L. Synsteliem
 Rory L. Synsteliem, Professional Land Surveyor
 Minnesota License No. 44565

STATE OF MINNESOTA
 COUNTY OF HENNEPIN
 The foregoing instrument was acknowledged before me this 20th day of August, 2014, by Rory L. Synsteliem, Professional Land Surveyor.

Stephanie Marie Moline Groth
 Notary Public, Hennepin County, Minnesota
 My Commission Expires: January 31, 2016

Stephanie Marie Moline Groth
 Printed Name

CITY OF ROSEVILLE, Minnesota
 We do hereby certify that on the 21st day of July, 2014, the City Council of the City of Roseville, Minnesota, approved this plat. Also, the conditions of Minnesota Statutes, Section 505.03, Subd. 2, have been fulfilled.

[Signature] Mayor
[Signature] Clerk

DEPARTMENT OF PROPERTY RECORDS AND REVENUE
 Pursuant to Minnesota Statutes, Section 505.021, Subd. 9, taxes payable in the year 2014 on the land hereinbefore described have been paid. Also, pursuant to Minnesota Statutes, Section 272.12, there are no delinquent taxes and transfer entered on this 29th day of August, 2014.

Mark Oswald Director
 By: *Mary Kay Simpson* Deputy

COUNTY SURVEYOR
 I hereby certify that this plat complies with the requirements of Minnesota Statutes, Section 505.021; and is approved pursuant to Minnesota Statutes, Section 383A.42, this 29th day of August, 2014.

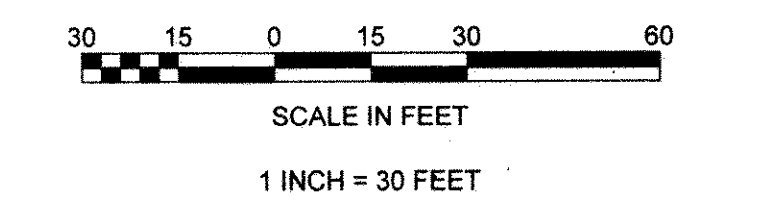
Craig W. Hinzman
 Craig W. Hinzman, L.S.
 Ramsey County Surveyor

COUNTY RECORDER, County of Ramsey, State of Minnesota
 I hereby certify that this plat of OWASSO PRESERVE was filed in the office of the County Recorder for public record on this 5th day of NOVEMBER, 2014, at 9:11 o'clock A.M. and was duly filed in Book 126 of Plats, Page 29, as Document Number A04530868.

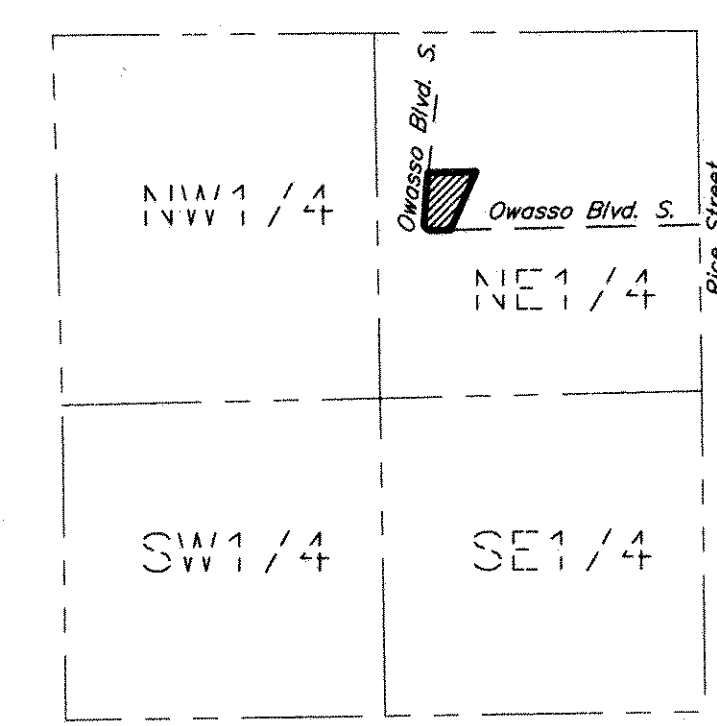
[Signature] Deputy County Recorder

REGISTRAR OF TITLES, County of Ramsey, State of Minnesota
 I hereby certify that this plat of OWASSO PRESERVE was filed in the office of the Registrar of Titles for public record on this 5th day of NOVEMBER, 2014, at 9:11 o'clock A.M. and was duly filed in Book 49 of Plats, Page 7, as Document Number T02516664.

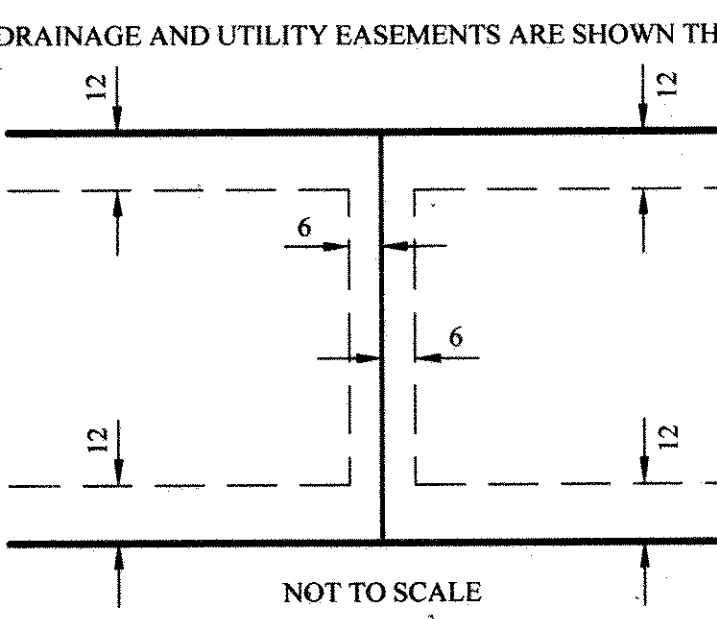
[Signature] Deputy Registrar of Titles



- Set 1/2 inch by 14 inch iron pipe in the ground and marked by License No. 44565
- Found iron monument
- Set nail and disc marked by License No. 44565
- ⊙ Found Cast-Iron-Monument



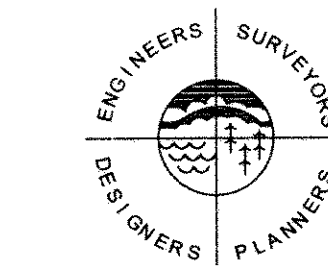
SEC. 1 - TWP. 29 - RGE. 23
 RAMSEY COUNTY, MINNESOTA
VICINITY MAP
 NO SCALE



NOT TO SCALE
 Being 6 feet in width when adjoining side lot lines, unless otherwise indicated, and being 12 feet in width when adjoining public ways and rear lot lines, unless otherwise indicated, as shown on this plat.



For the purpose of this plat the south line of Lot 18, A.K. Barnum's Garden Lots is assumed to bear North 88 degrees 58 minutes 06 seconds East



SATHRE-BERGQUIST, INC.
 150 SOUTH BROADWAY WAYZATA, MN. 55391 (952) 476-6000

TSCHIDA OWASSO HILLS PLAT NO. 4
 TSCHIDA OWASSO HILLS PLAT NO. 3
 FARRINGTON AVE.
 TSCHIDA OWASSO HILLS PLAT NO. 3