

RED PINE FARM

KNOW ALL PERSONS BY THESE PRESENTS: That The Pentom Land Company, a Minnesota corporation, owner of the following described property situated in the City of North Oaks, County of Ramsey, State of Minnesota:

That part of the Northwest Quarter of the Southwest Quarter of Section 12, Township 30 North, Range 23 West, lying Southerly of Lake Estates of North Oaks, according to the recorded plat thereof.

Has caused the same to be surveyed and platted as **RED PINE FARM** and does hereby donate and dedicate to the public for public use forever the public way as shown on this plat.

In witness whereof said The Pentom Land Company, a Minnesota corporation, has caused these presents to be signed by its proper officer this 30th day of June, 2014.

signed: **THE PENTOM LAND COMPANY**

Daniel J. Herbst
its President

STATE OF MINNESOTA

COUNTY OF Hennepin

The foregoing instrument was acknowledged before me this 30th day of June, 2014, by Daniel J. Herbst the President of The Pentom Land Company, a Minnesota corporation, on behalf of the corporation.

Jamie M. Schwartz
(Signature)

Jamie M. Schwartz
(Name Printed)

Notary Public, Hennepin County, Minnesota
My Commission Expires January 31, 2015

I, Craig W. Morse, Professional Land Surveyor, do hereby certify that I have surveyed or directly supervised the survey of the property described on this plat; prepared this plat or directly supervised the preparation of this plat; that this plat is a correct representation of the boundary survey; that all mathematical data and labels are correctly designated on this plat; that all monuments depicted on this plat have been correctly set; that all monuments indicated on this plat will be correctly set within one year; that all water boundaries and wet lands, as defined in Minnesota Statutes, Section 505.01, Subd. 3, as of the date of the surveyor's certification are shown and labeled on this plat; and all public ways are shown and labeled on this plat.

Dated this 30th day of June, 2014.

C. W. Morse
Craig W. Morse, Licensed Land Surveyor
Minnesota License No. 23021

STATE OF MINNESOTA

COUNTY OF Hennepin

The foregoing Surveyor's Certificate was acknowledged before me this 30th day of June, 2014, by Craig W. Morse, a Professional Land Surveyor.

Shannon Sinnen
(Signature)

Shannon Sinnen
(Name Printed)

Notary Public, Carver County, Minnesota
My Commission Expires January 31, 2018

CITY COUNCIL

City of North Oaks, Ramsey County, Minnesota
We do hereby certify that on the 13th day of March, 2014, the City Council of the City of North Oaks, Minnesota, approved this plat. Also, the conditions of Minnesota Statutes, Section 505.03, Subd. 2, have been fulfilled.

[Signature]
Mayor

[Signature]
Clerk

DEPARTMENT OF PROPERTY RECORDS AND REVENUE

Pursuant to Minnesota Statutes, Section 505.021, Subd. 9, taxes payable in the year 2014 on the land hereinbefore described have been paid. Also, pursuant to Minnesota Statutes, Section 272.12, there are no delinquent taxes and transfer entered this 6th day of August, 2014.

Mark Oswald Director
Department of Property Records and Revenue
By Mary Kay Simpson Deputy

COUNTY SURVEYOR

I hereby certify that this plat complies with the requirements of Minnesota Statutes, Section 505.021, and is approved pursuant to Minnesota Statutes, Section 383A.42, this 6th day of August, 2014.

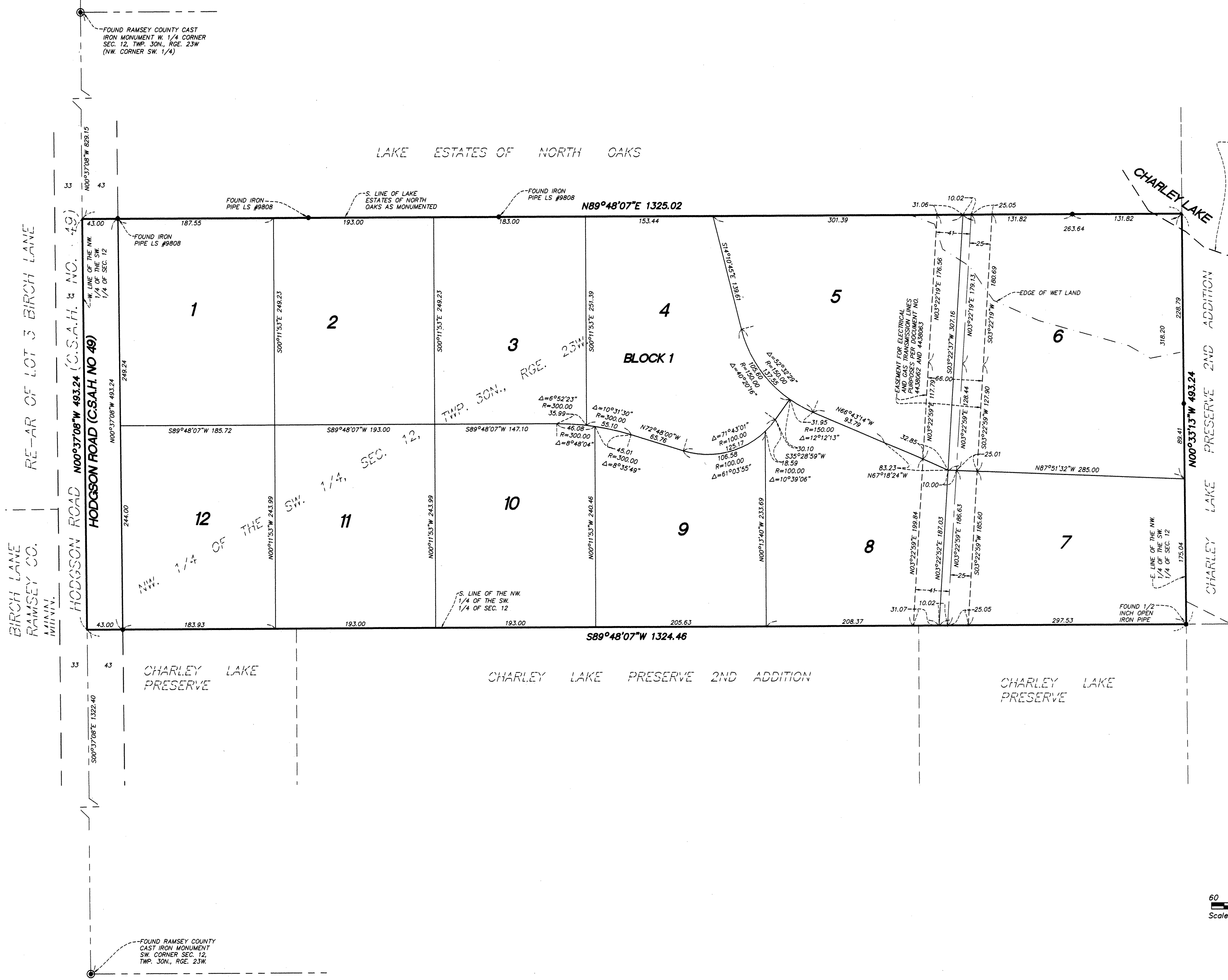
Craig W. Hinzman
Craig W. Hinzman, L.S.
Ramsey County Surveyor

COUNTY RECORDER, County of Ramsey, State of Minnesota

I hereby certify that this plat of **RED PINE FARM** was filed in the office of the County Recorder for public record on this 7th day of AUGUST, 2014, at 10:00 o'clock A.M., and was duly filed in Book 126 of Plats, Pages 24 and 25, as Document Number A04520881.

Deputy County Recorder

RED PINE FARM



LAKE ELEVATION = 893.3 FEET ON MAY 6, 2013, NO HIGHEST KNOWN ELEVATION DATA AVAILABLE FROM THE DEPARTMENT OF NATURAL RESOURCES, THE UNITED STATES ARMY CORPS OF ENGINEERS, OR ANY OTHER GOVERNMENTAL UNIT.

The south line of the Northwest Quarter of the Southwest Quarter of Section 12, Township 30N., Range 23W. is assumed to bear $S89^{\circ}48'07''W$.

- Denotes found 1/2 inch x 14 inch iron rebar marked with plastic cap inscribed LS 23021, unless otherwise shown.

Any required interior monument location on this plat with no monument symbol shown, indicates a 1/2 inch diameter by 14 inch iron rebar marked by License Number 23021 that will be set, and which shall be in place within one year after the recording of this plat.

