

KREYFISH ADDITION

KNOW ALL MEN BY THESE PRESENTS: That Donald J. Baierl and Carol A. Krey, Co-Trustees of the Evelyn J. Baierl Trust Agreement dated January 5, 1990, owners, of the following described property situated in the City of Vadnais Heights, County of Ramsey, State of Minnesota:

Lot 8, DAVIDSON'S SECOND SUBDIVISION, STOCKDALE FARMS, according to the record plat thereof, Ramsey County, Minnesota;

And

All of Lot 9, DAVIDSON'S SECOND SUBDIVISION, STOCKDALE FARMS, according to the record plat thereof, Ramsey County, Minnesota, EXCEPT that part West of a line parallel with and 168 feet westerly at right angles from east line.

Have caused the same to be surveyed and platted as KREYFISH ADDITION and do hereby dedicate or donate to the public for public use forever the drainage and utility easements as shown on this plat.

In witness whereof said Donald J. Baierl, Co-Trustee of the Evelyn J. Baierl Trust Agreement dated January 3, 1990, has hereunto set his hand this 8 day of July, 2014.

Donald J. Baierl

Donald J. Baierl, Co-Trustee of the Evelyn J. Baierl Trust Agreement dated January 3, 1990.

STATE OF MINNESOTA

COUNTY OF Washington

The foregoing instrument was acknowledged before me this 8th day of July, 2014, by Donald J. Baierl, Trustee of the Evelyn J. Baierl Trust Agreement dated January 3, 1990.

Angela Anderson
Angela Anderson
Notary Public, Washington County, Minnesota
My Commission Expires 1-3-2018

In witness whereof said Carol A. Krey, Co-Trustee of the Evelyn J. Baierl Trust Agreement dated January 3, 1990, has hereunto set her hand this 2 day of July, 2014.

Carol A. Krey

Carol A. Krey, Co-Trustee of the Evelyn J. Baierl Trust Agreement dated January 3, 1990.

STATE OF MINNESOTA

COUNTY OF Ramsey

The foregoing instrument was acknowledged before me this 2nd day of July, 2014, by Carol A. Krey, Trustee of the Evelyn J. Baierl Trust Agreement dated January 3, 1990.

Carla A. Baierl
Carla A. Baierl
Notary Public, Ramsey County, Minnesota
My Commission Expires Jan 31, 2019

I, Jonathan L. Faraci, Professional Land Surveyor, do hereby certify that I have surveyed or directly supervised the survey of the property described on this plat; prepared this plat or directly supervised the preparation of this plat; that this plat is a correct representation of the boundary survey, that all mathematical data and labels are correctly designated on this plat; that all monuments depicted on this plat have been correctly set; that all water boundaries and wet lands, as defined in Minnesota Statutes, Section 505.01, Subd. 3, as of the date of the surveyor's certification are shown and labeled on this plat; and all public ways are shown and labeled on this plat.

Dated this 2 day of July, 2014

Jonathan L. Faraci
Jonathan L. Faraci, Professional Land Surveyor
Minnesota License No. 16464

STATE OF MINNESOTA

COUNTY OF Ramsey

The foregoing Surveyor's Certificate was acknowledged before me this 2nd day of July, 2014, by Jonathan L. Faraci, a Licensed Land Surveyor.

Carla A. Baierl
Carla A. Baierl
Notary Public, Ramsey County, Minnesota
My Commission Expires Jan 31, 2019

City of Vadnais Heights

We do hereby certify that on the 10 day of July, 2014, the City Council of the City of Vadnais Heights, Minnesota, approved this plat. Also, the conditions of Minnesota Statutes, Section 505.03, Subd. 2, have been fulfilled.

Mayor
Mayor
City Clerk
City Clerk

Department of Property Records and Revenue

Pursuant to Minnesota Statutes, Section 505.021, Subd. 9, taxes payable in the year 2014 on the land hereinbefore described have been paid. Also, pursuant to Minnesota Statutes, Section 272.12, there are no delinquent taxes and transfer entered this 25 day of July, 2014.

Mark Oswald, Director
Department of Property Records and Revenue
By Deputy, Deputy

County Surveyor

I hereby certify that this plat complies with the requirements of Minnesota Statutes, Section 505.021, and is approved pursuant to Minnesota Statutes, Section 383A.42, this 25th day of July, 2014.

Craig W. Hinzman
Craig W. Hinzman, L.S.
Ramsey County Surveyor

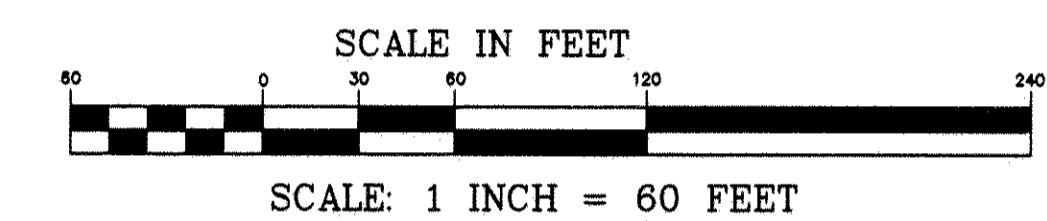
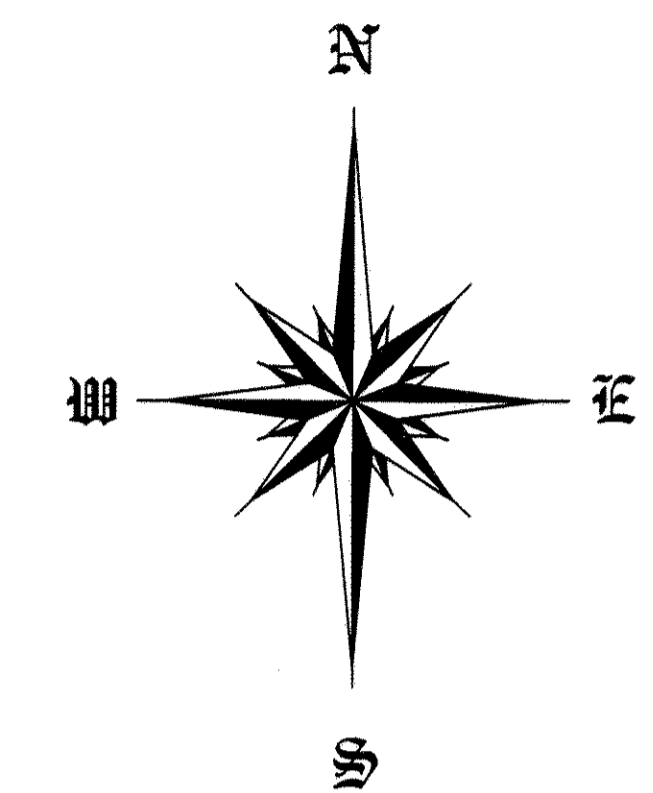
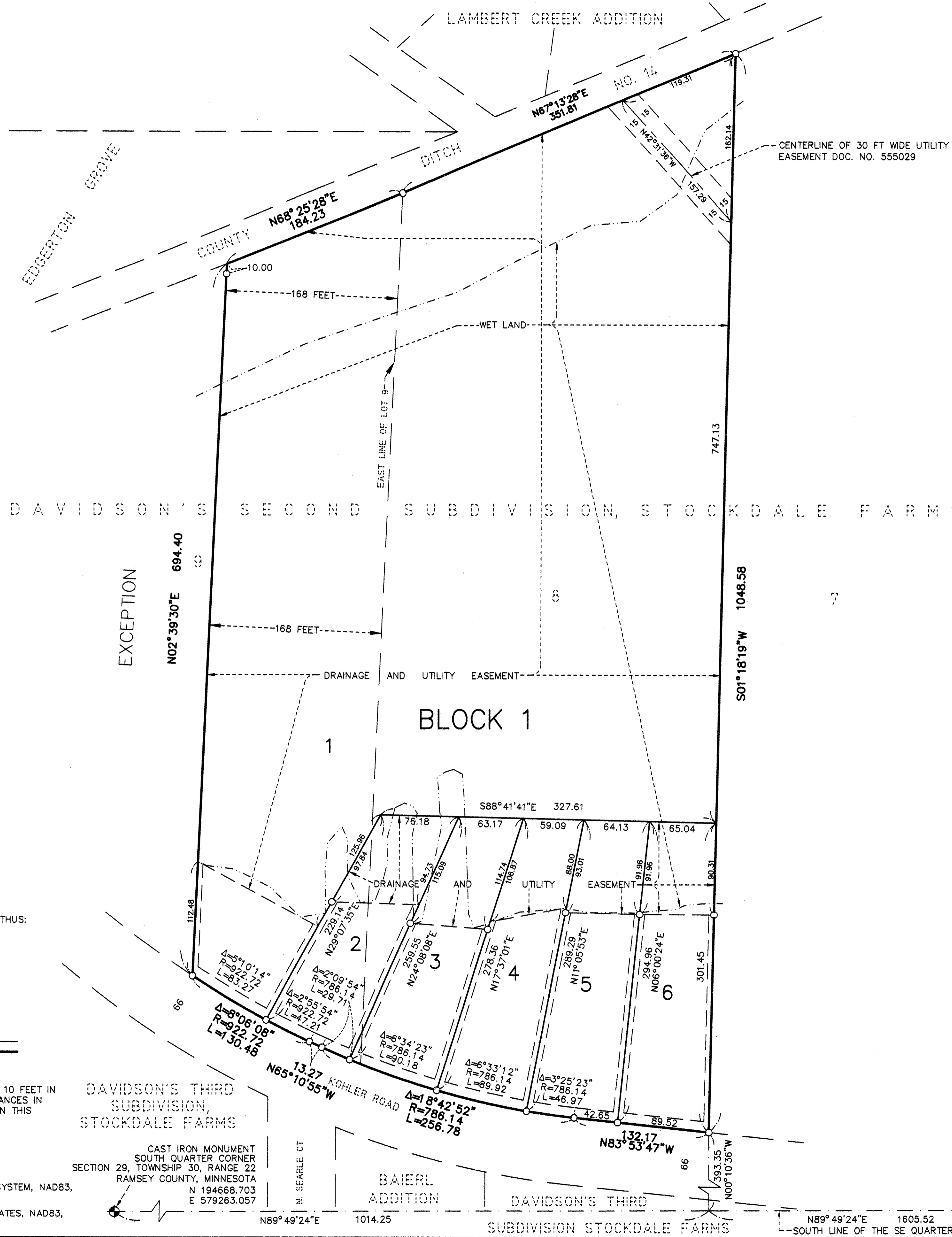
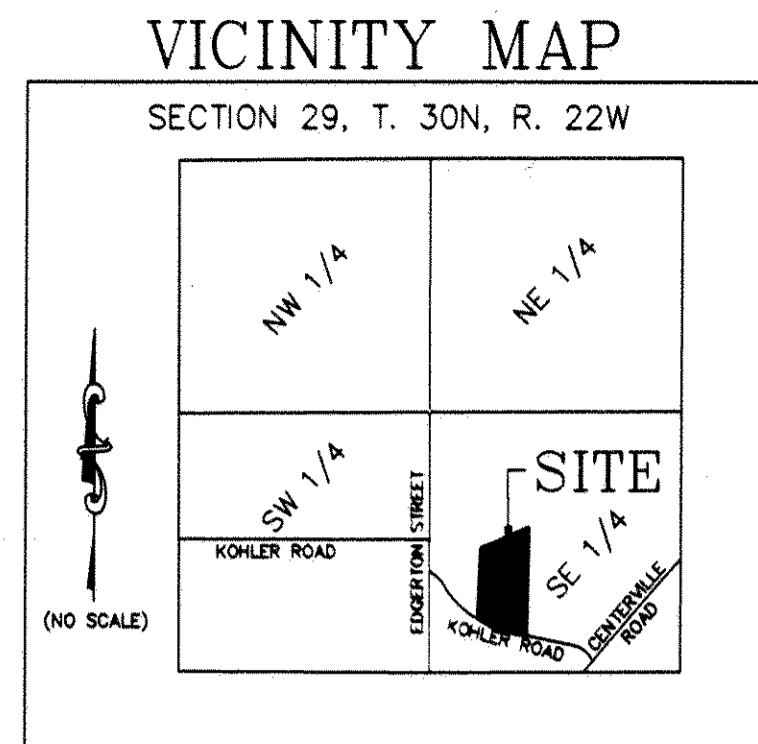
Registrar of Titles, County of Ramsey, State of Minnesota

I hereby certify that this plat of KREYFISH ADDITION was filed in the office of the Registrar of Titles for public record on this 12 day of AUGUST, 2014, at 2:00 o'clock P.M., and was duly filed in Book 49 of Plats, Pages 5 and 6, as Document Number T02510785.

Deputy Registrar of Titles

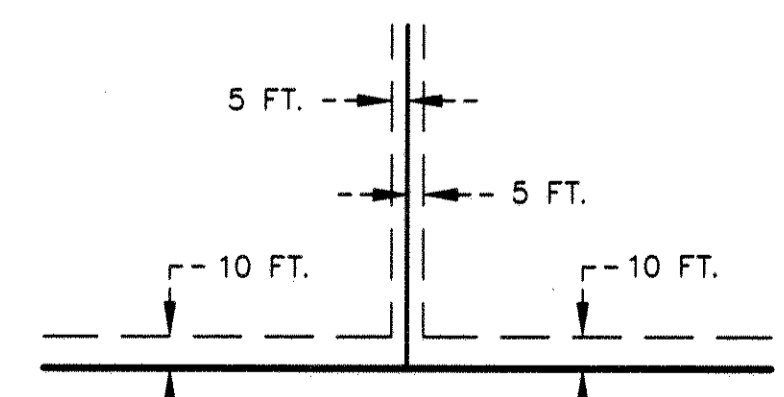
LAKE & LAND SURVEYING, INC.
1200 CENTRE POINTE CURVE, SUITE 275
MENDOTA HEIGHTS, MINNESOTA, 55120
PHONE: 651-776-6211

KREYFISH ADDITION



- Legend**
- Denotes 12 inch long Common Spike with washer stamped R.L.S. 16464 Monument set.
 - ⊕ Denotes Ramsey County Cast Iron Monument.
 - Denotes Wet Land Delineation

DRAINAGE AND UTILITY EASEMENTS ARE SHOWN THUS:



BEING 5 FEET IN WIDTH ALONG SIDE LOT LINES, 10 FEET IN WIDTH ALONG PUBLIC WAYS, AND VARYING DISTANCES IN WIDTH ALONG REAR LOT LINES, AS INDICATED ON THIS PLAT.

BASIS OF BEARINGS: RAMSEY COUNTY COORDINATE SYSTEM, NAD83, 1986 ADJUSTMENT.
 COORDINATES SHOWN ARE RAMSEY COUNTY COORDINATES, NAD83, 1986 ADJUSTMENT.

DAVIDSON'S THIRD SUBDIVISION, STOCKDALE FARMS
 CAST IRON MONUMENT SOUTH QUARTER CORNER SECTION 29, TOWNSHIP 30, RANGE 22 RAMSEY COUNTY, MINNESOTA
 N 194668.703
 E 579263.057

N 89° 49' 24" E 1014.25

BAIERL ADDITION

DAVIDSON'S THIRD SUBDIVISION STOCKDALE FARMS

N 89° 49' 24" E 1605.52 SOUTH LINE OF THE SE QUARTER

CAST IRON MONUMENT SOUTHEAST CORNER SECTION 29, TOWNSHIP 30, RANGE 22 RAMSEY COUNTY, MINNESOTA
 N 194676.783
 E 581882.814

LAKE & LAND SURVEYING, INC.
 1200 CENTRE POINTE CURVE, SUITE 275
 MENDOTA HEIGHTS, MINNESOTA, 55120
 PHONE: 651-776-6211