

COPY

CHARLEY LAKE PRESERVE 2ND ADDITION


KNOW ALL PERSONS BY THESE PRESENTS: That The Pentom Land Company, a Minnesota corporation, owner and Mattamy (Minneapolis) Partnership, a Minnesota general partnership, contract for deed vendee of the following described property situated in the City of North Oaks, County of Ramsey, State of Minnesota:

Outlot C and Outlot D, CHARLEY LAKE PRESERVE.

Have caused the same to be surveyed and platted as CHARLEY LAKE PRESERVE 2ND ADDITION.

In witness whereof said The Pentom Land Company, a Minnesota corporation, has caused these presents to be signed by its proper officer this 29th day of April, 2014.

Signed: THE PENTOM LAND COMPANY


Larry M. Wertheim, Assistant Secretary

STATE OF MINNESOTA
COUNTY OF Hennepin

The foregoing instrument was acknowledged before me this 29th day of April, 2014, by Larry M. Wertheim, Assistant Secretary of The Pentom Land Company, a Minnesota corporation, on behalf of the corporation.


(Signature)

Grace A. Koebnick
(Name Printed)

Notary Public, Hennepin County, Minnesota
My Commission Expires January 31, 2015

In witness whereof said Mattamy (Minneapolis) Partnership, a Minnesota general partnership, has caused these presents to be signed by its proper partner this 30th day of April, 2014.

Signed: MATTAMY (MINNEAPOLIS) PARTNERSHIP
By: Calben (Minnesota) Corporation
Its: General Partner


Steve J. Logan, Vice President

STATE OF MINNESOTA
COUNTY OF HENNEPIN

The foregoing instrument was acknowledged before me this 30th day of April, 2014, by Steve J. Logan, Vice President of Calben (Minnesota) Corporation, a Minnesota corporation, general partner of Mattamy (Minneapolis) Partnership, a Minnesota general partnership, on behalf of the partnership.



(Signature)

Gail Rae Brodersen
(Name Printed)

Notary Public, Hennepin County, Minnesota
My Commission Expires 1-31-16

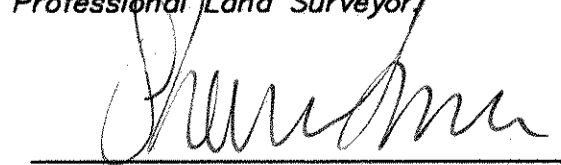
I, Craig W. Morse, Professional Land Surveyor, do hereby certify that I have surveyed or directly supervised the survey of the property described on this plat; prepared this plat or directly supervised the preparation of this plat; that this plat is a correct representation of the boundary survey; that all mathematical data and labels are correctly designated on this plat; that all monuments depicted on this plat have been correctly set; that all monuments indicated on this plat will be correctly set within one year; that all water boundaries and wet lands, as defined in Minnesota Statutes, Section 505.01, Subd. 3, as of the date of the surveyor's certification are shown and labeled on this plat; and all public ways are shown and labeled on this plat.

Dated this 28th day of April, 2014.


Craig W. Morse, Licensed Land Surveyor
Minnesota License No. 23021

STATE OF MINNESOTA
COUNTY OF HENNEPIN

The foregoing Surveyor's Certificate was acknowledged before me this 28th day of April, 2014, by Craig W. Morse, a Professional Land Surveyor.

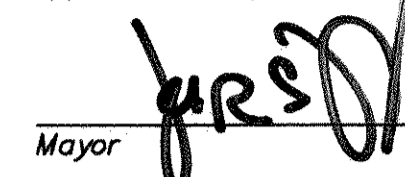

(Signature)

Shannon Sinnen
(Name Printed)

Notary Public, Carver County, Minnesota
My Commission Expires January 31, 2016

CITY COUNCIL


City of North Oaks, Ramsey County, Minnesota
We do hereby certify that on the 15 day of February, 2014, the City Council of the City of North Oaks, Minnesota, approved this plat. Also, the conditions of Minnesota Statutes, Section 505.03, Subd. 2, have been fulfilled.


Mayor


Clerk

DEPARTMENT OF PROPERTY RECORDS AND REVENUE

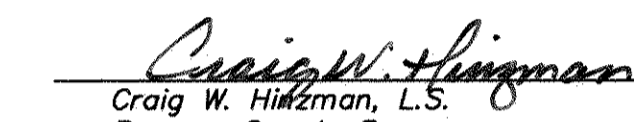
Pursuant to Minnesota Statutes, Section 505.021, Subd. 9, taxes payable in the year 2014 on the land hereinbefore described have been paid. Also, pursuant to Minnesota Statutes, Section 272.12, there are no delinquent taxes and transfer entered this 17th day of July, 2014.


Mark Oswald, Director
Department of Property Records and Revenue

By 
Deputy

COUNTY SURVEYOR

I hereby certify that this plat complies with the requirements of Minnesota Statutes, Section 505.021, and is approved pursuant to Minnesota Statutes, Section 383A.42, this 14th day of JULY, 2014.


Craig W. Hinzman, L.S.
Ramsey County Surveyor

COUNTY RECORDER, County of Ramsey, State of Minnesota

I hereby certify that this plat of CHARLEY LAKE PRESERVE 2ND ADDITION was filed in the office of the County Recorder for public record on this 14th day of JULY, 2014, at 12:00 o'clock P.M., and was duly filed in Book 126 of Plats, Pages 18 through 21, as Document Number A04516910.

Deputy County Recorder

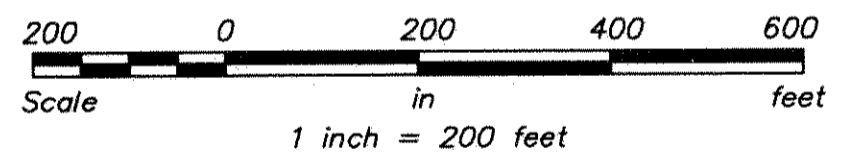
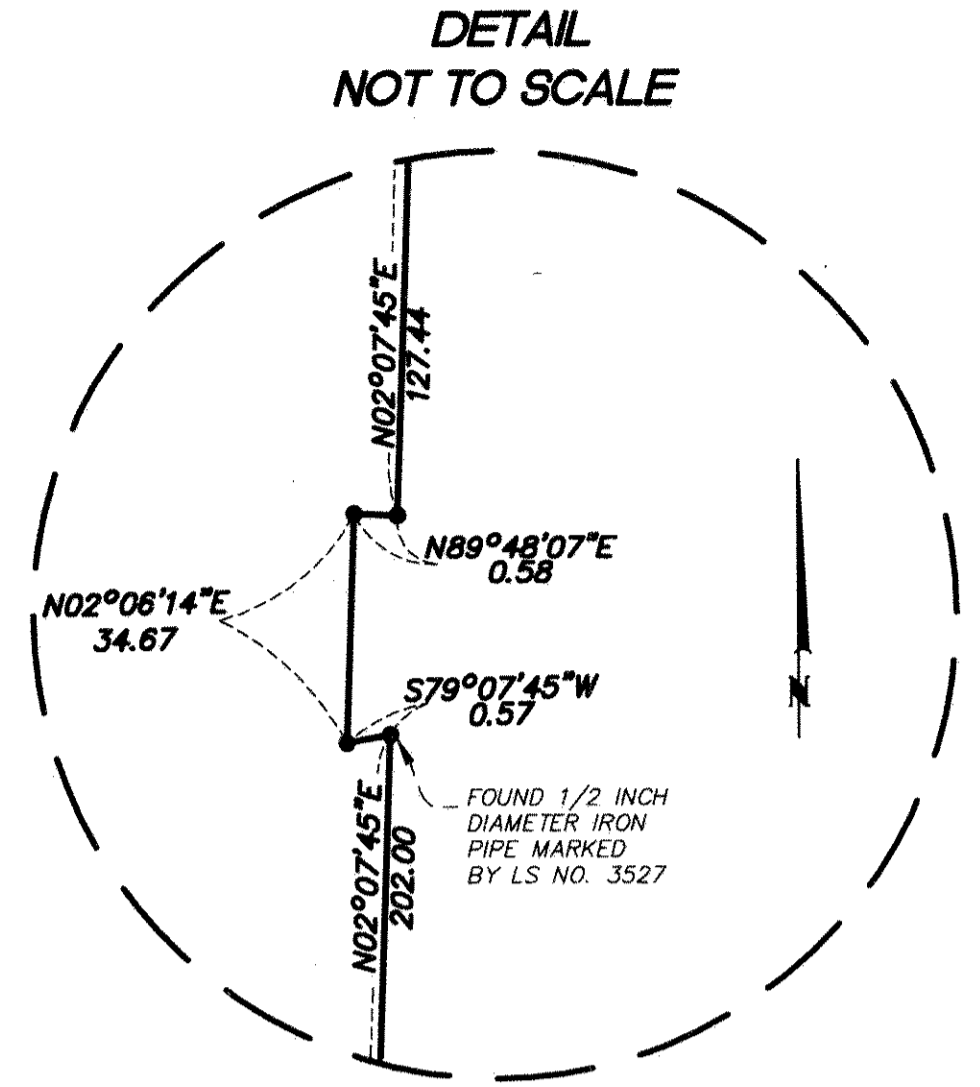
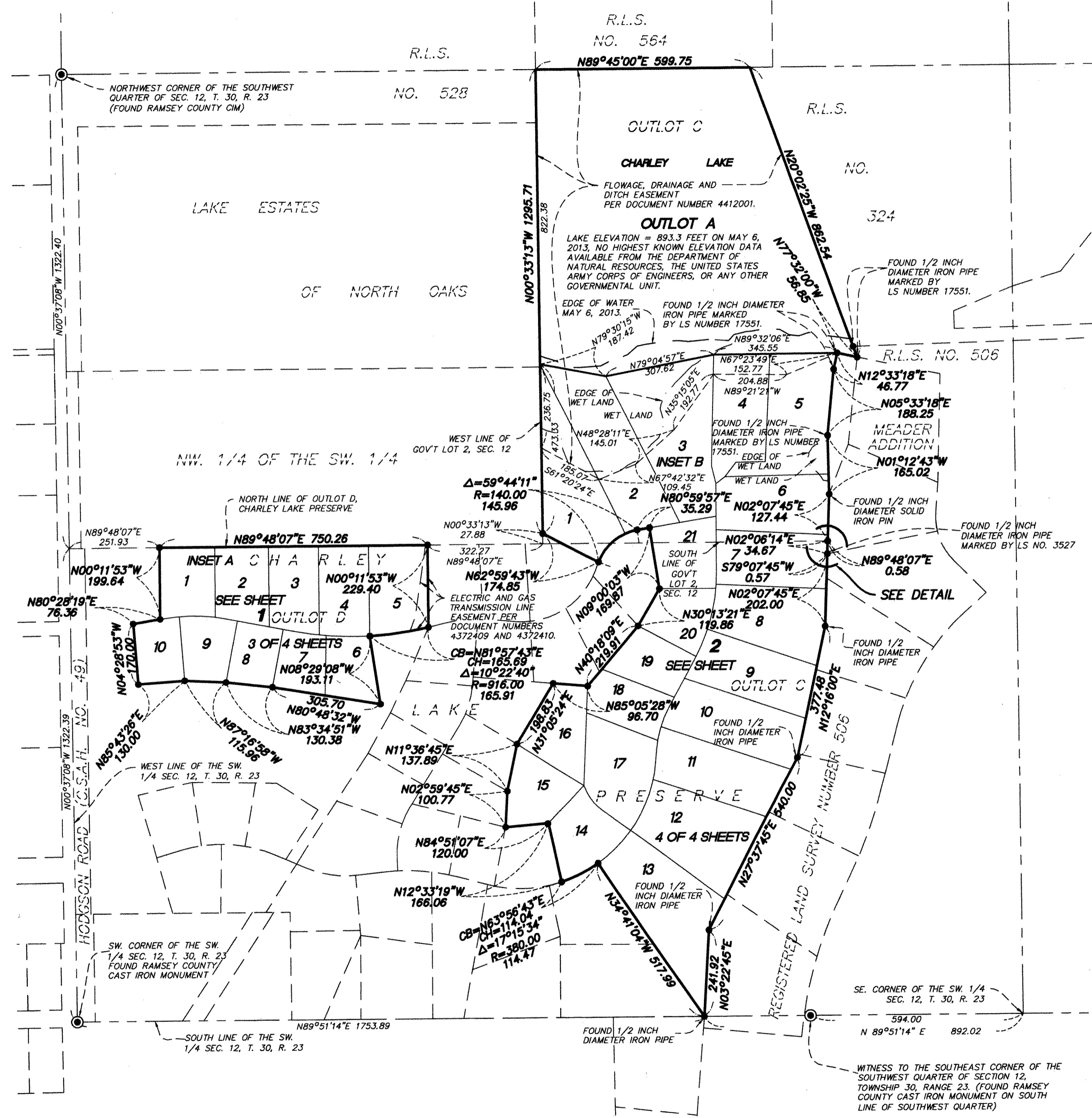
REGISTRAR OF TITLES, County of Ramsey, State of Minnesota

I hereby certify that this plat of CHARLEY LAKE PRESERVE 2ND ADDITION was filed in the office of the Registrar of Titles for public record on this 14th day of JULY, 2014, at 12:00 o'clock P.M., and was duly filed in Book 48 of Plats, Pages 48 through 50, as Document Number T02509060.

Deputy Registrar of Titles

COPY

CHARLEY LAKE PRESERVE 2ND ADDITION



The north line of Outlot D, CHARLEY LAKE PRESERVE, is assumed to bear $N89^{\circ}48'07''E$.

- Denotes found 1/2 inch x 14 inch iron rebar marked with plastic cap inscribed LS 23021, unless otherwise shown.

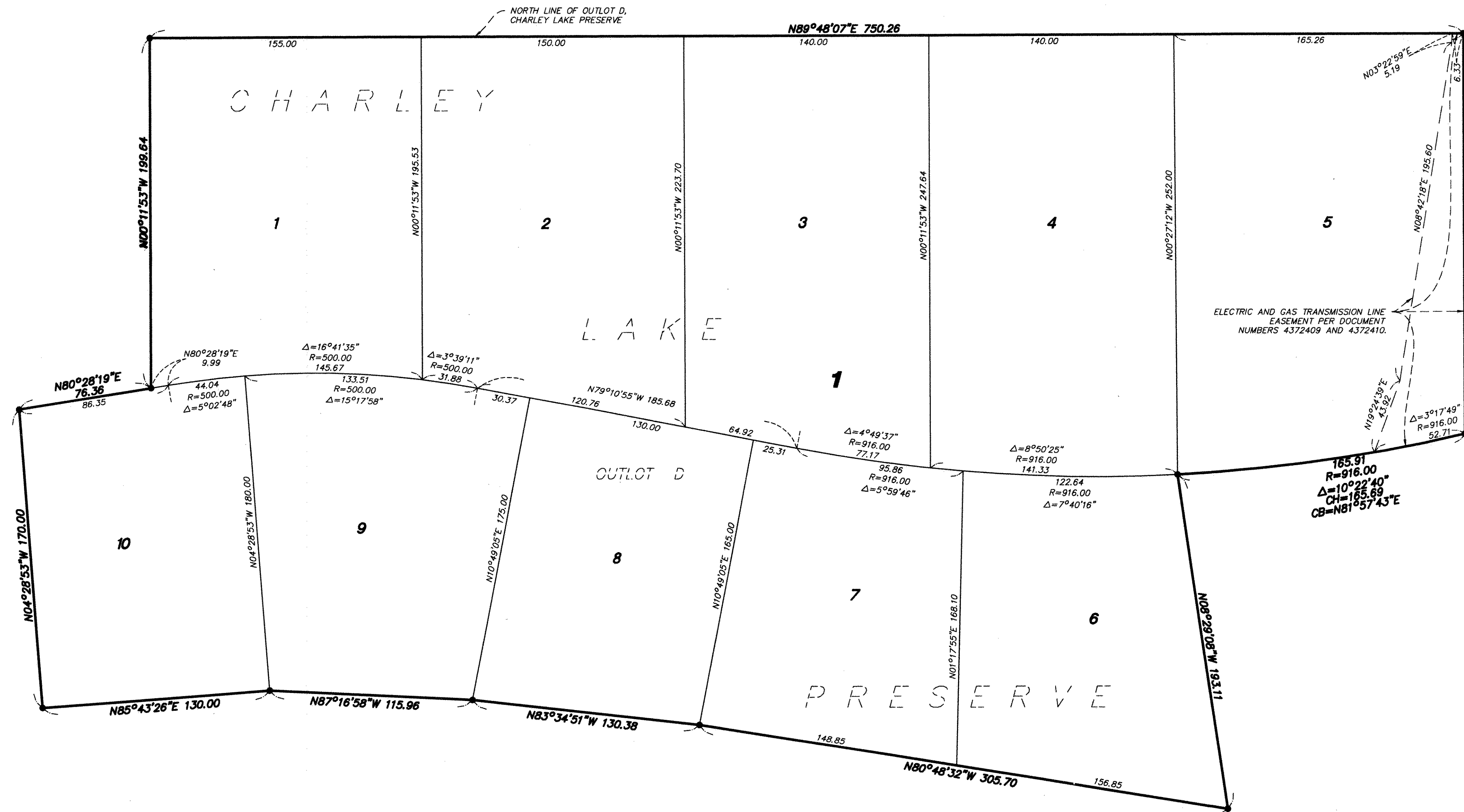
Any required interior monument location on this plat with no monument symbol shown, indicates a 1/2 inch diameter by 14 inch iron rebar marked with plastic cap inscribed License Number 23021 that will be set, and which shall be in place within one year after the recording of this plat.

BENCHMARK:
Top of cast iron monument located at the northwest corner of the Southwest Quarter of Section 12, Township 30, Range 23 = 916.25 feet, 1929 National Geodetic Vertical Datum(NGVD)

R.L.S. denotes REGISTERED LAND SURVEY

CHARLEY LAKE PRESERVE 2ND ADDITION

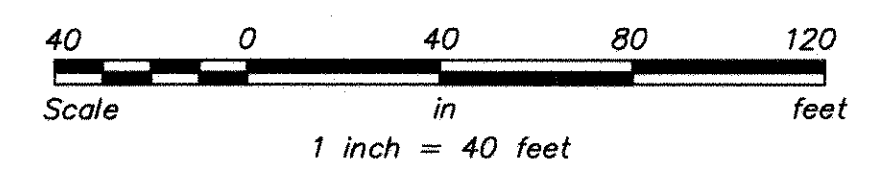
INSET A



The north line of Outlot D, CHARLEY LAKE PRESERVE, is assumed to bear N89°48'07"E.

● Denotes found 1/2 inch x 14 inch iron rebar marked with plastic cap inscribed LS 23021, unless otherwise shown.

Any required interior monument location on this plat with no monument symbol shown, indicates a 1/2 inch diameter by 14 inch iron rebar marked with plastic cap inscribed License Number 23021 that will be set, and which shall be in place within one year after the recording of this plat.



COPY

CHARLEY LAKE PRESERVE 2ND ADDITION

INSET B

