

THE BEL RAE

Folz, Freeman, Erickson, Inc.
LAND PLANNING • SURVEYING • ENGINEERING



12445 55TH STREET NORTH
LAKE ELMO, MINNESOTA 55042
Phone (651) 439-8833 www.ffe-inc.com

Owner's Certificate

KNOW ALL MEN BY THESE PRESENTS: That Mounds View Properties, LLC, a Minnesota limited liability company, under the laws of Minnesota, owner of the following described property, situated in the City of Mounds View, County of Ramsey, State of Minnesota:

That part of Lot 2, Block 5, EIGENHEER SECOND ADDITION, except that part platted in EIGENHEER THIRD ADDITION, according to the recorded plats thereof, Ramsey County, Minnesota;

And

Lot 1, Block 1, EIGENHEER THIRD ADDITION, according to the recorded plat thereof, Ramsey County, Minnesota.

Has caused the same to be surveyed and platted as THE BEL RAE and does hereby dedicate or donate to the public for public use forever the drainage and utility easements as shown on this plat.

In witness whereof said Mounds View Properties, LLC, a Minnesota limited liability company, has caused these presents to be signed by its proper officer this 3 day of March, 2014.

Signed: Mounds View Properties, LLC

Greg Johnson, Treasurer

STATE OF Minnesota
COUNTY OF Ramsey

The foregoing instrument was acknowledged before me this 3rd day of March, 2014, by Greg Johnson, Treasurer, Mounds View Properties, LLC, a Minnesota limited liability company on behalf of the company.

Signature of Notary

Mary A. Springer
Printed Name of Notary
Notary Public, Minnesota
My Commission Expires January 31, 2015

Surveyor's Certificate

I, Timothy J. Freeman, hereby certify that I have surveyed and platted or directly supervised the survey and platting of the property described on this plat as THE BEL RAE; that this plat is a correct representation of the boundary survey; that all mathematical data and labels are correctly designated on the plat; that all monuments depicted on the plat have been correctly set as indicated on the plat; that all water boundaries and wet lands as defined in MS 505.01, Subd. 3 existing as of the date of this certification are shown and labeled on the plat; and that all public ways are shown and labeled on the plat.

Dated this 28th day of FEBRUARY, 2014.

Timothy J. Freeman, Minnesota Licensed Land Surveyor
License No. 16989

STATE OF MINNESOTA
COUNTY OF WASHINGTON

The foregoing instrument was acknowledged before me this 28th day of FEBRUARY, 2014 by Timothy J. Freeman, Licensed Land Surveyor.

Signature of Notary

NANCY LYNN STRAND
Printed Name of Notary
Notary Public, MINNESOTA
My Commission Expires JAN. 31, 2017

City of Mounds View

We do hereby certify that on the 3rd day of March, 2014, the City Council of the City of Mounds View, Minnesota, approved this plat. Also, the conditions of Minnesota Statutes, Section 505.03, Subd. 2, have been fulfilled.

Mayor

James Eruson
Clerk

Department of Property Records and Revenue

Pursuant to Minnesota Statutes, Section 505.021, Subd. 9, taxes payable in the year 2014 on the land hereinbefore described have been paid. Also, pursuant to Minnesota Statutes, Section 272.12, there are no delinquent taxes and transfer entered this 1st day of May, 2014.

Director
Property Records and Revenue

By Mary Kay Simpson
Deputy

County Surveyor

I hereby certify that this plat complies with the requirements of Minnesota Statutes, Section 505.021, and is approved pursuant to Minnesota Statutes, Section 383A.42, this 6th day of May, 2014.

Craig W. Hinzman, L.S.
Ramsey County Surveyor

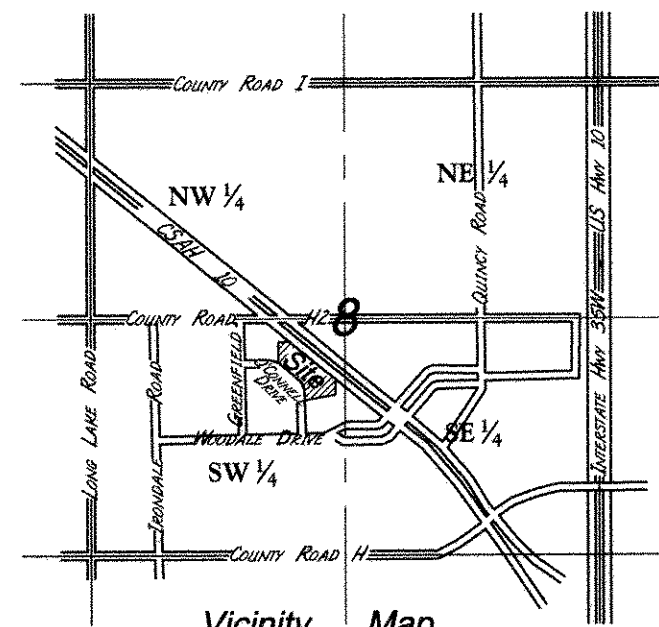
County Recorder

County of Ramsey, State of Minnesota
I hereby certify that this plat of THE BEL RAE was filed in the office of the County Recorder for the public record on this 6th day of MAY, 2014, at 4 o'clock P.M. and was duly filed in Book 126 of Plats, Pages 8 and 9, as Document Number 4508057.

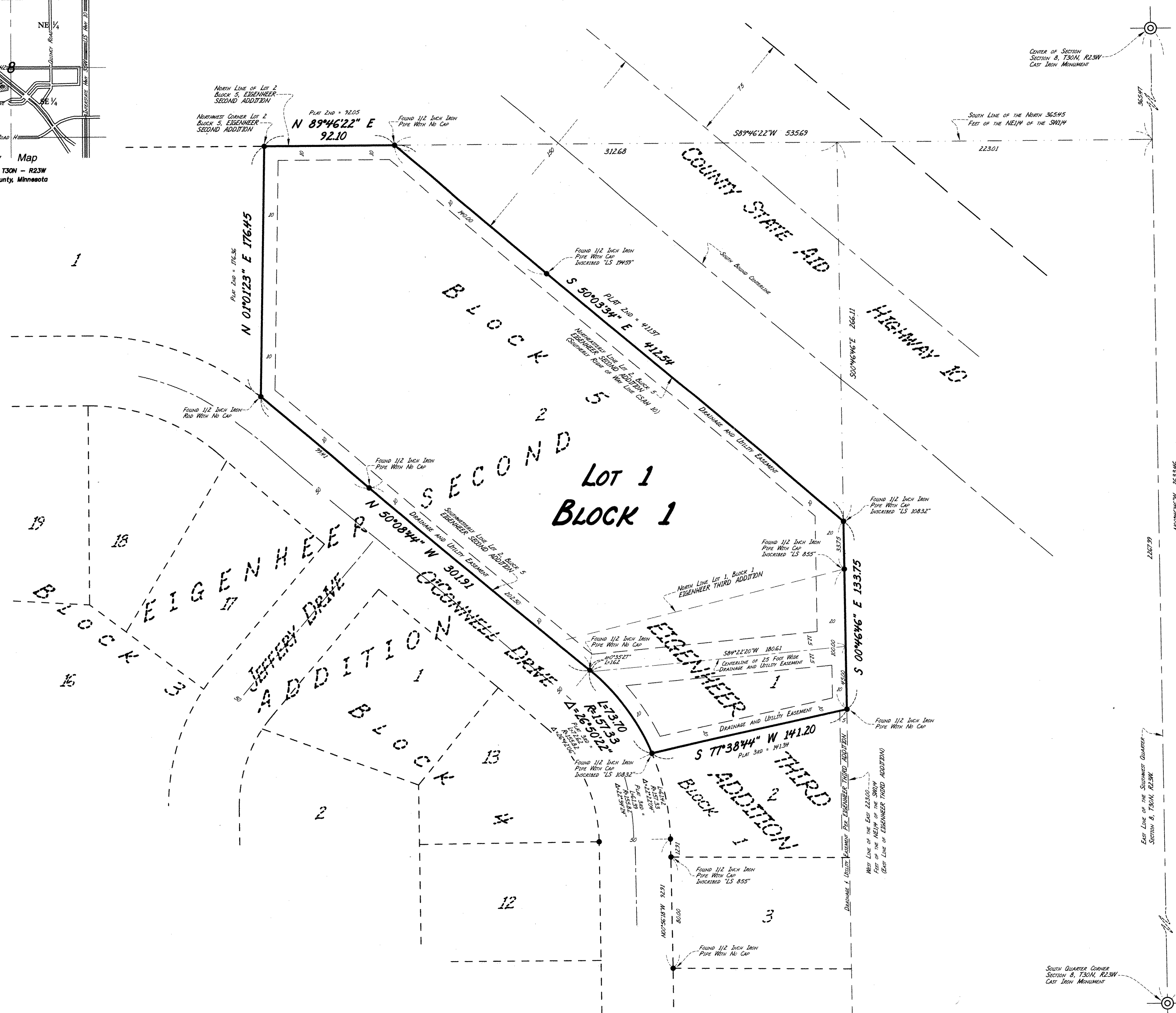
Deputy County Recorder



THE BEL RAE



Vicinity Map
Section 8, T30N - R23W
Ramsey County, Minnesota



- LEGEND**
- DENOTES FOUND 1 INCH PINCHED TOP IRON PIPE MONUMENT, UNLESS SHOWN OTHERWISE
 - PLAT 2ND - DENOTES RECORD VALUES FROM PLAT OF EIGENHEER SECOND ADDITION
 - PLAT 3RD - DENOTES RECORD VALUES FROM PLAT OF EIGENHEER THIRD ADDITION

NOTES

1) ORIENTATION OF THIS BEARING SYSTEM IS BASED ON THE EAST LINE OF THE SOUTHWEST QUARTER OF SECTION 8, TOWNSHIP 30 NORTH, RANGE 23 WEST, WHICH IS ASSUMED TO BEAR SOUTH 00 DEGREES 46 MINUTES 46 SECONDS EAST.

