

J. C. STOUT'S ADDITION TO SUMMIT PARK

CROCUS NEW HILL ADDITION

KNOW ALL MEN BY THESE PRESENTS: That Crocus New Hill, LLC, a Minnesota limited liability company, fee owner of the following described property situated in the City of Saint Paul, County of Ramsey, State of Minnesota:

Lots 9 to 24, inclusive, Lot 25, except the Northerly 20 feet, All of Lot "A", lying West of the East line of Lot 24 extended North to the North line of Lot "A", all in Block 2, J.C. Stout's Addition to Summit Park;

And

The Northerly 20 feet of Lot 25, Block 2, J.C. Stout's Addition to Summit Park.

Has caused the same to be surveyed and platted as CROCUS NEW HILL ADDITION and does hereby dedicate or donate to the public for public use forever the utility easements as shown on this plat.

In witness whereof said Crocus New Hill, LLC, a Minnesota limited liability company, has caused these presents to be signed by its proper officer this 15th day of March, 2013.

SIGNED: Crocus New Hill, LLC

[Signature] its President

STATE OF MINNESOTA

COUNTY OF Hennepin

The foregoing instrument was acknowledged before me this 15th day of March, 2013, by John Klall, the President of said Crocus New Hill, LLC, a Minnesota limited liability company, on behalf of said company.

[Signature] Notary Public

Sandra M. Woods, Notary Public, Hennepin County, Minnesota, My Commission Expires January 31, 2016

I, Mark S. Hanson, Professional Land Surveyor, do hereby certify that I have surveyed or directly supervised the survey of the property described on this plat; prepared this plat or directly supervised the preparation of this plat; that this plat is a correct representation of the boundary survey; that all mathematical data and labels are correctly designated on this plat; that all monuments depicted on this plat have been correctly set; that all water boundaries and wet lands, as defined in Minnesota Statutes, Section 505.01, Subd. 3, as of the date of the surveyor's certification are shown and labeled on this plat; and all public ways are shown and labeled on this plat.

Dated this 14th day of March, 2013.

[Signature] Mark S. Hanson

Mark S. Hanson, Licensed Land Surveyor, Minnesota License No. 15480

STATE OF MINNESOTA

COUNTY OF HENNEPIN

The foregoing Surveyor's Certificate was acknowledged before me on this 14th day of March, 2013, by Mark S. Hanson, a Professional Land Surveyor.

[Signature] Notary Public

Sandra M. Woods, Notary Public, Hennepin County, Minnesota, My Commission Expires January 31, 2016

CITY OF SAINT PAUL, MINNESOTA

I do hereby certify that on the 13th day of February, 2013, the City Council of the City of Saint Paul, Minnesota, approved this plat. Also, the conditions of Minnesota Statutes, Section 505.04, Subd. 2, have been fulfilled.

[Signature] Clerk

DEPARTMENT OF PROPERTY RECORDS AND REVENUE

Pursuant to Minnesota Statutes, Section 505.021, Subd. 9, taxes payable in the year 2013 on the land hereinbefore described have been paid. Also, pursuant to Minnesota Statutes, Section 272.12, there are no delinquent taxes and transfer entered this 20th day of March, 2013.

[Signature] Director, Department of Property Records and Revenue

[Signature] Deputy

COUNTY SURVEYOR

I hereby certify that this plat complies with the requirements of Minnesota Statutes, Section 505.021, and is approved pursuant to Minnesota Statutes, Section 383A.42, this 26th day of March, 2013.

[Signature] Craig W. Hinzman, Ramsey County Surveyor

COUNTY RECORDER, COUNTY OF RAMSEY, STATE OF MINNESOTA

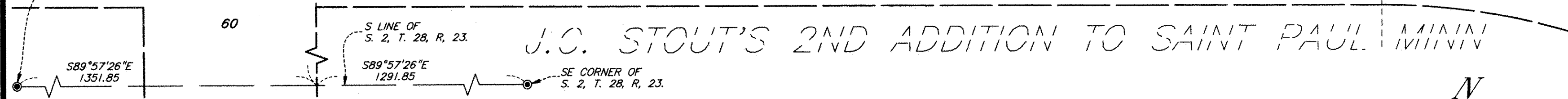
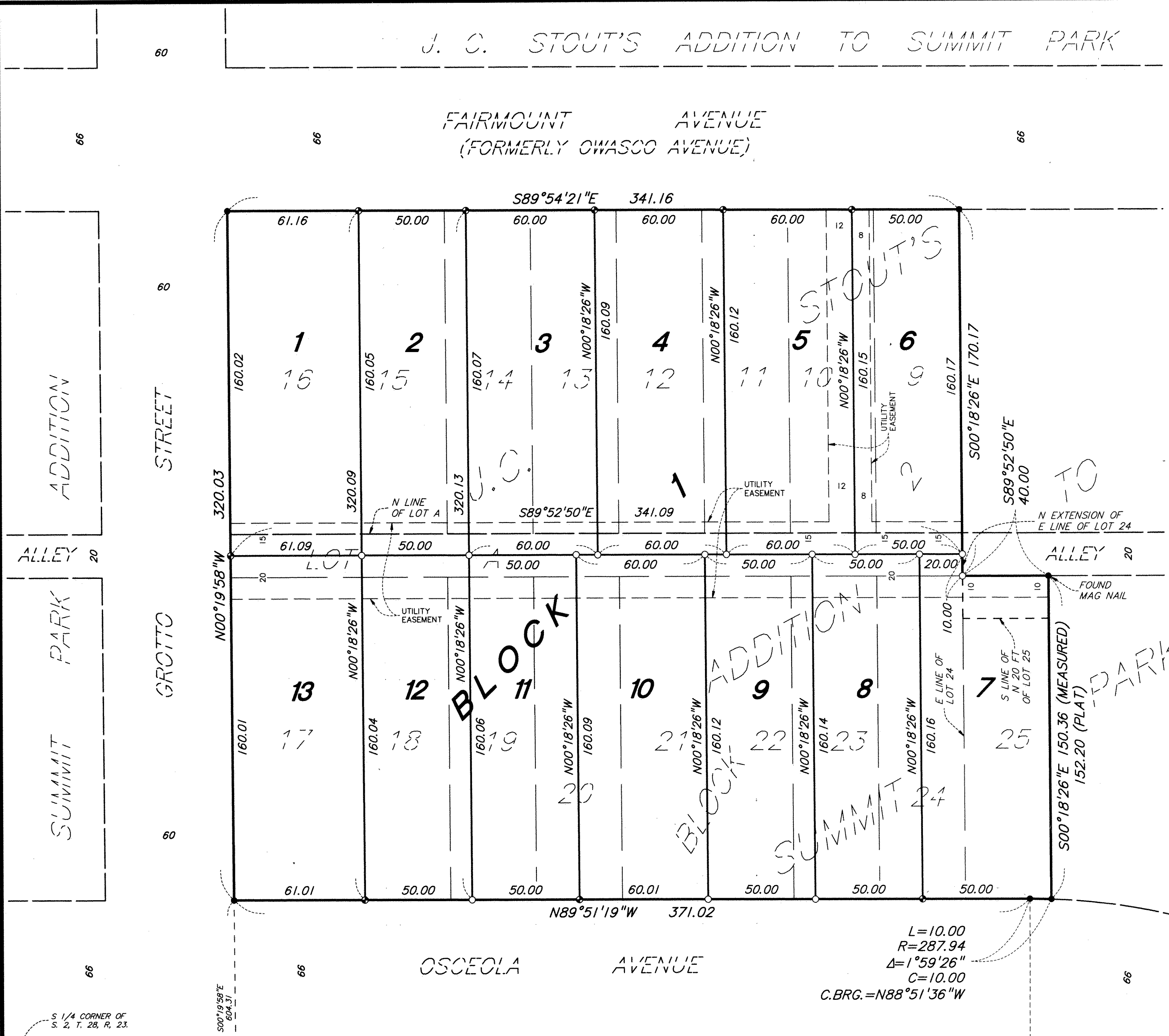
I hereby certify that this plat of CROCUS NEW HILL ADDITION was filed in the office of the County Recorder for public record on this 28th day of March, 2013 at 9 o'clock A.M. and was duly filed in Book 125 of Plats, Page 32, as Document Number 4394492.

[Signature] Deputy County Recorder

REGISTRAR OF TITLES, COUNTY OF RAMSEY, STATE OF MINNESOTA

I hereby certify that this plat of CROCUS NEW HILL ADDITION was filed in the office of the Registrar of Titles for public record on this 28th day of March, 2013 at 9 o'clock A.M. and was duly filed in Book 48 of Plats, Page 33, as Document Number 2266102.

[Signature] Deputy Registrar of Titles



- Legend for symbols: O (1/2 inch iron pipe), ● (1.17 inch copper magnetized marker), ● (found 1.17 inch copper magnetized marker), ● (found cast iron monument).

For the purposes of this plat, the south line of Section 2, Twp. 28, Rge. 23, is assumed to have a bearing of S89°57'26"E.

PLAT Denotes distance shown on the plat of J.C. STOUT'S ADDITION TO SUMMIT PARK.

