

ARDEN PLAZA

KNOW ALL PERSONS BY THESE PRESENTS: That Arden Plaza LLC, a Minnesota limited liability company, owner of the following described property situated in the City of Arden Hills, County of Ramsey, State of Minnesota:

The North 872 feet of the East Half of the Northeast Quarter of Section 34, Township 30 North, Range 23 West, except the West 625 feet thereof; excepting from the above described tract the West 200 feet of the North 283 feet.

Has caused the same to be surveyed and platted as ARDEN PLAZA and does hereby donate and dedicate to the public for public use forever the public ways, drainage easement and the drainage and utility easements as shown on this plat.

In witness whereof said Arden Plaza LLC, a Minnesota limited liability company, has caused these presents to be signed by its proper officer this 7th day of November, 2011.

ARDEN PLAZA LLC

[Signature]
Stephen Wellington, Jr., Chief Manager

STATE OF MINNESOTA
COUNTY OF Ramsey

The foregoing instrument was acknowledged before me this 7th day of November, 2011, by Stephen Wellington, Jr., Chief Manager of Arden Plaza LLC, a Minnesota limited liability company, on behalf of the company.

[Signature]
Notary Public, Ramsey County, Minnesota
My Commission Expires 1/31/2015

Sonsa Simonsen
(Name Printed)

I, Mark R. Salo, Professional Land Surveyor, do hereby certify that I have surveyed or directly supervised the survey of the property described on this plat; prepared this plat or directly supervised the preparation of this plat; that this plat is a correct representation of the boundary survey; that all mathematical data and labels are correctly designated on this plat; that all monuments depicted on this plat have been correctly set; that all monuments indicated on this plat will be correctly set within one year; that all water boundaries and wet lands, as defined in Minnesota Statutes, Section 505.01, Subd. 3, as of the date of the surveyor's certification are shown and labeled on this plat; and all public ways are shown and labeled on this plat.

Dated this 2nd day of November, 2011.

[Signature]
Mark R. Salo, Professional Land Surveyor
Minnesota License No. 43933

STATE OF MINNESOTA
COUNTY OF Hennepin

The foregoing Surveyor's Certificate was acknowledged before me this 2nd day of November, 2011, by Mark R. Salo, a Professional Land Surveyor.

[Signature]
Notary Public, Carver County, Minnesota
My Commission Expires January 31, 2013

Shannon Sinnen
(Name Printed)

CITY COUNCIL

City of Arden Hills
We do hereby certify that on the 29th day of August, 2011, the City Council of the City of Arden Hills, Minnesota, approved this plat. Also, the conditions of Minnesota Statutes, Section 505.03, Subd. 2, have been fulfilled.

[Signature]
Mayor

[Signature]
City Clerk



DEPARTMENT OF PROPERTY RECORDS AND REVENUE

Pursuant to Minnesota Statutes, Section 505.021, Subd. 9, taxes payable in the year 2011 on the land hereinbefore described have been paid. Also, pursuant to Minnesota Statutes, Section 272.12, there are no delinquent taxes and transfer entered this 10th day of November, 2011.

[Signature] Director
Department of Property Records and Revenue
By [Signature] Deputy

COUNTY SURVEYOR

I hereby certify that this plat complies with the requirements of Minnesota Statutes, Section 505.021, and is approved pursuant to Minnesota Statutes, Section 383A.42, this 15th day of NOVEMBER, 2011.

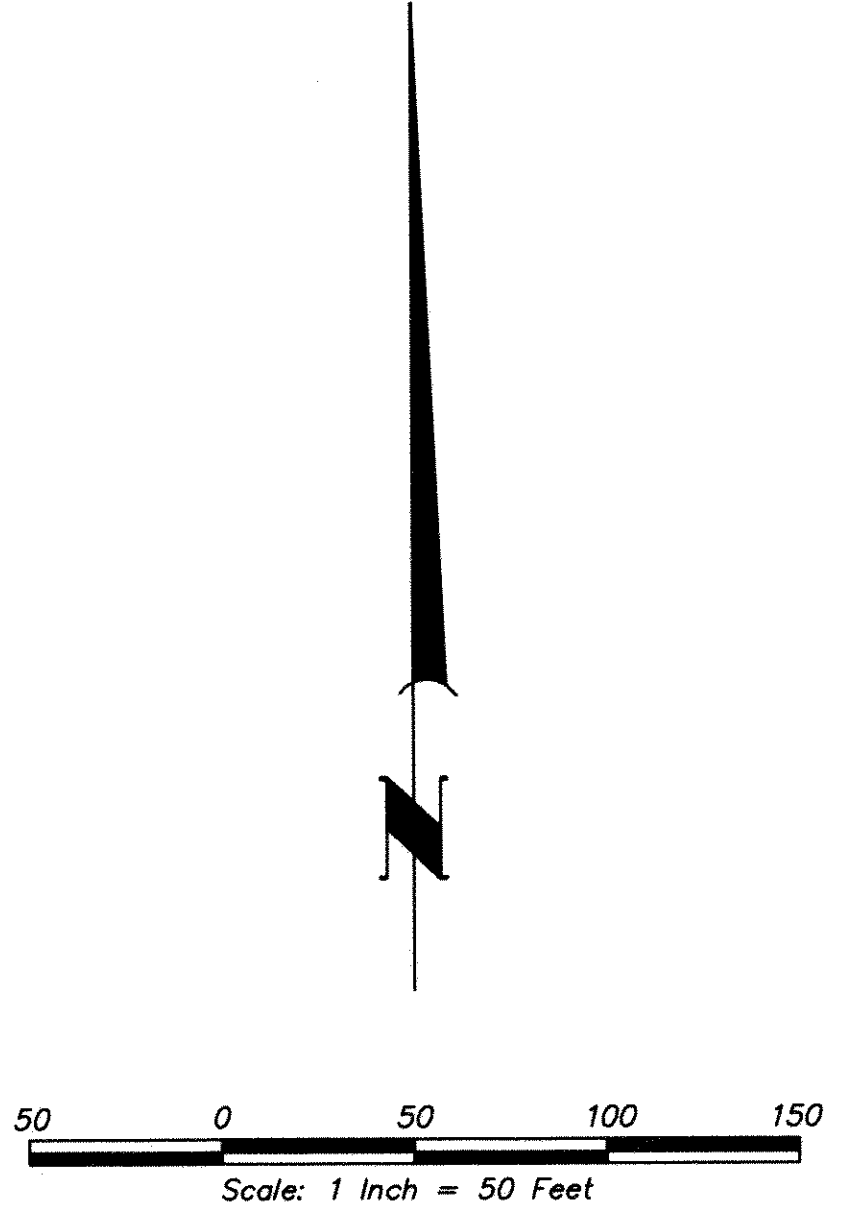
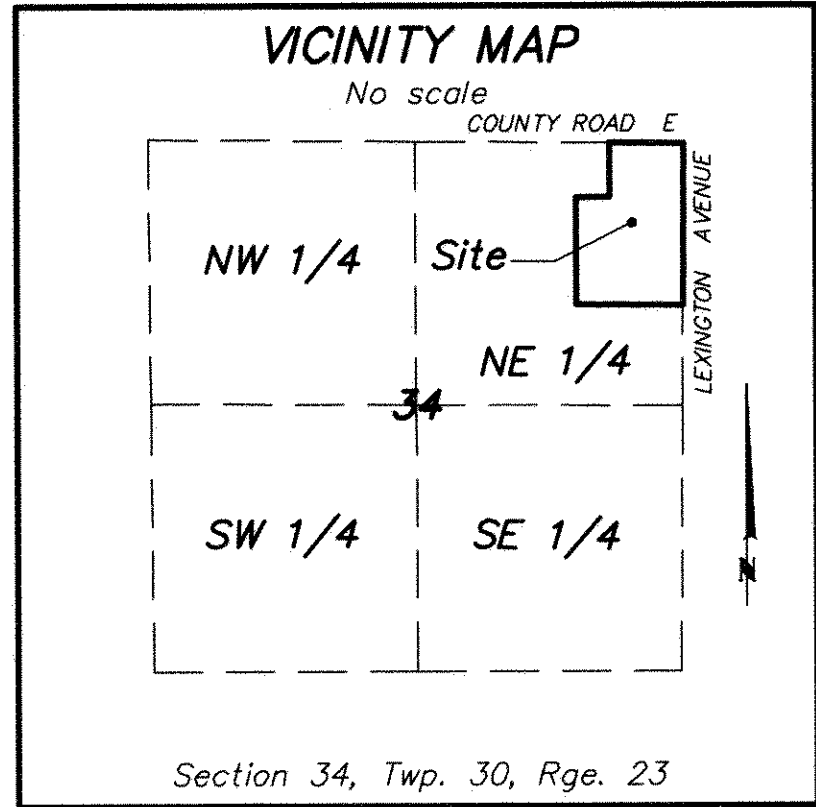
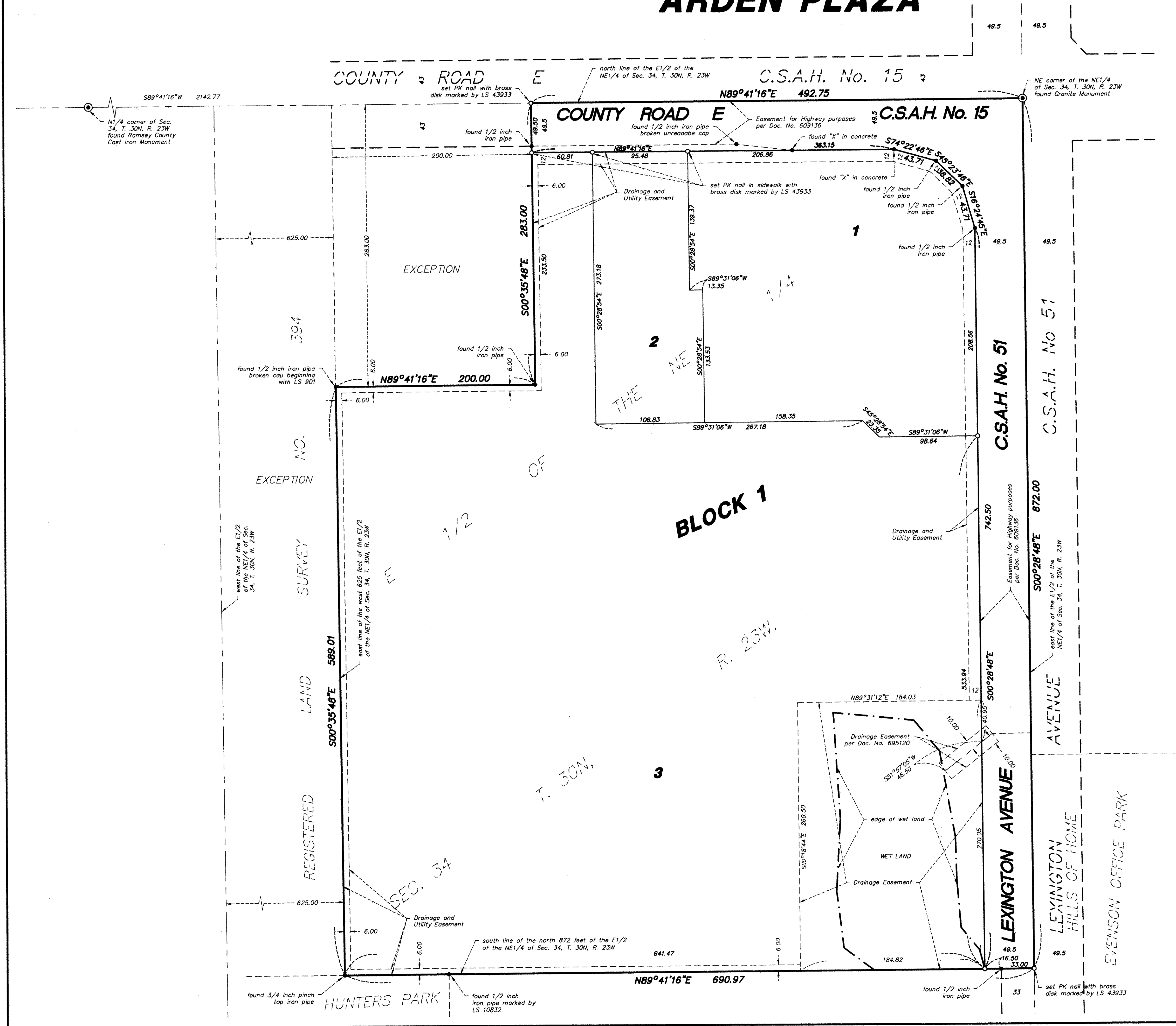
[Signature]
Craig W. Hinzmeyer, L.S.
Ramsey County Surveyor

REGISTRAR OF TITLES, County of Ramsey, State of Minnesota

I hereby certify that this plat of ARDEN PLAZA was filed in the office of the Registrar of Titles for public record on this 16th day of November, 2011, at 9:00 o'clock A.M., and was duly filed in Book 48, of Plats, Pages 15 and 16, as Document Number 2156883.

Deputy Registrar of Titles

ARDEN PLAZA



The north line of the NE1/4 of Sec. 34, T. 30N., R. 23W. is assumed to bear $S89^{\circ}41'16''W$.

o Denotes 3/8 inch by 14 inch rebar set and marked by License No. 43933, unless otherwise shown on this plat.

Any required interior monument location on this plat with no monument symbol shown, indicates an interior plat monument that will be set, and which shall be in place within one year after the recording of this plat.