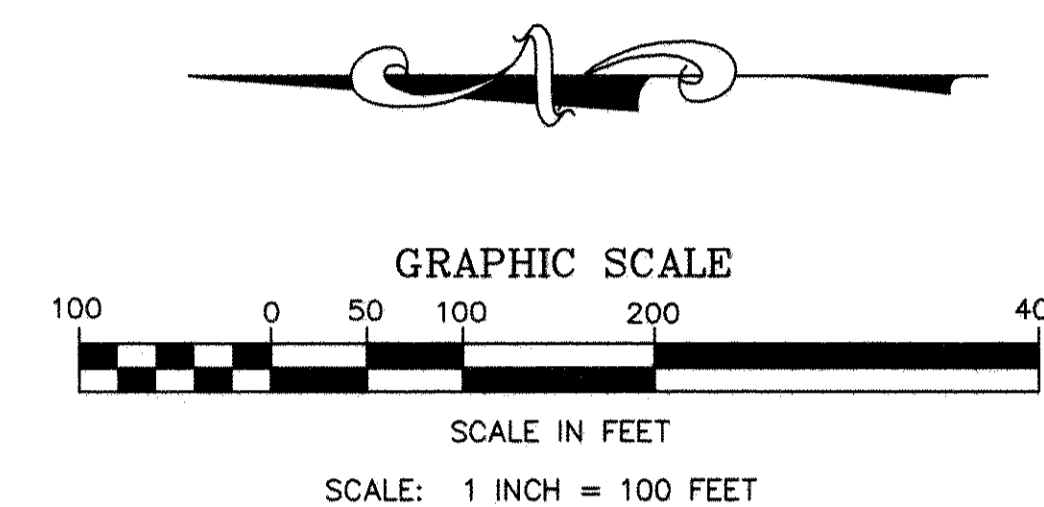
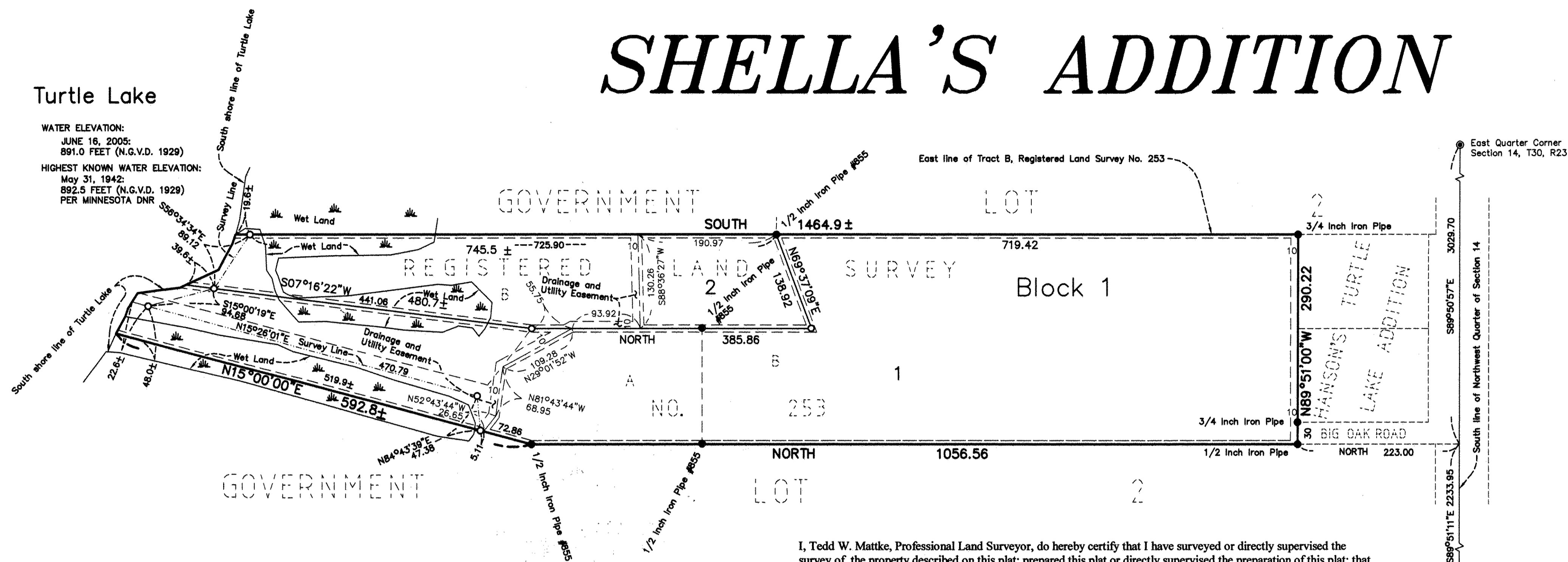


# SHELLA'S ADDITION



I, Tedd W. Matke, Professional Land Surveyor, do hereby certify that I have surveyed or directly supervised the survey of the property described on this plat; prepared this plat or directly supervised the preparation of this plat; that this plat is a correct representation of the boundary survey; that all mathematical data and labels are correctly designated on this plat; that all monuments depicted on this plat have been correctly set; that all water boundaries and wet lands, as defined in Minnesota Statutes, Section 505.01, Subd. 3, as of the date of the surveyor's certification are shown and labeled on this plat and all public ways are shown and labeled on this plat.

NOTE: FOR THE PURPOSES OF THIS PLAT, THE EAST LINE OF TRACT B, REGISTERED LAND SURVEY NO. 253 IS ASSUMED TO BEAR SOUTH.

- DENOTES FOUND IRON MONUMENT
- DENOTES 1/2 INCH X 14 INCH IRON PIPE SET AND MARKED BY MINNESOTA LICENSE NO. 15612
- DENOTES WET LAND LINE, NOT A LOT LINE

KNOW ALL PERSONS BY THESE PRESENTS: That Darwin J. DeRosier and Mary Ann DeRosier, husband and wife as Joint Tenants, owners, and 21st Century Bank, a Minnesota corporation, mortgagee, of the following described property situated in the City of Shoreview, County of Ramsey, State of Minnesota:

Tracts A and B, Registered Land Survey No. 253

Have caused the same to be surveyed and platted as SHELLA'S ADDITION and do hereby dedicate or donate to the public for public use forever the easements for drainage and utility purposes as shown on this plat.

In witness whereof said Darwin J. DeRosier and Mary Ann DeRosier, husband and wife, have hereunto set their hands this 17th day of October, 2007.

*Darwin J. DeRosier*  
Darwin J. DeRosier  
*Mary Ann DeRosier*  
Mary Ann DeRosier

STATE OF MINNESOTA  
COUNTY OF Ramsey

The foregoing instrument was acknowledged before me this 17th day of October, 2007, by Darwin J. DeRosier and Mary Ann DeRosier, husband and wife.

*Claudette R. Chmielecki*  
Claudette R. Chmielecki  
Notary Public, Minnesota  
My Commission Expires 01-31-2012

In witness whereof said 21st Century Bank, a Minnesota corporation, has caused these presents to be signed by its proper officer this 17th day of October, 2007.

Signed: 21st Century Bank  
*James W. Lindberg*  
James W. Lindberg, Senior Vice President

STATE OF MINNESOTA  
COUNTY OF Hennepin

The foregoing instrument was acknowledged before me this 17th day of October, 2007, by James W. Lindberg, Senior Vice President of 21st Century Bank, a Minnesota corporation, on behalf of the corporation.

*Bethany May Alcantara*  
Bethany May Alcantara  
Notary Public, Minnesota  
My Commission Expires Jun 30, 2012

Dated this 11th day of October, 2007.

*Tedd W. Matke*  
Tedd W. Matke, Professional Land Surveyor  
Minnesota License No. 15612

STATE OF MINNESOTA  
COUNTY OF Anoka

The foregoing Surveyor's Certificate was acknowledged before me this 11th day of October, 2007, by Tedd W. Matke, a Licensed Land Surveyor.

*Coreen A. Elwell*  
Coreen A. Elwell  
Notary Public, Minnesota  
My Commission Expires January 31, 2010

City of Shoreview

We do hereby certify that on the 23rd day of October, 2007, the City Council of the City of Shoreview, Minnesota, approved this plat. Also, the conditions of Minnesota Statutes, Section 505.03, Subd. 2, have been fulfilled.

*Sandra C. Martin*, Mayor  
*Tony C. Se...*, City Clerk

Department of Property Records and Revenue

Pursuant to Minnesota Statutes, Section 505.021, Subd. 9, taxes payable in the year 2007 on the land hereinbefore described have been paid. Also, pursuant to Minnesota Statutes, Section 272.12, there are no delinquent taxes and transfer entered this 23rd day of October, 2007.

*David Twa*, Director  
Department of Property Records and Revenue  
By *Mary Kay Simpson*, Deputy

County Surveyor

I hereby certify that this plat complies with the requirements of Minnesota Statutes, Section 505.021, and is approved pursuant to Minnesota Statutes, Section 383A.42, this \_\_\_ day of \_\_\_, 2007.

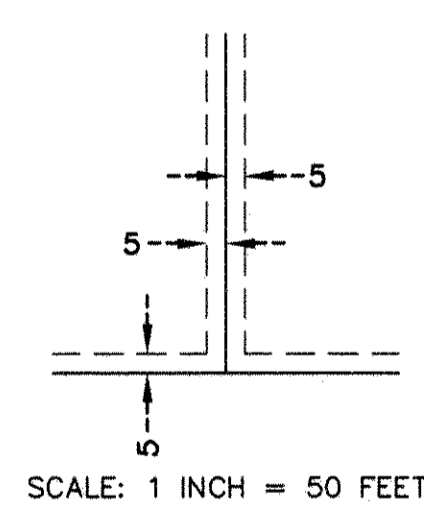
David D. Claypool, P.L.S.  
Ramsey County Surveyor

Registrar of Titles, County of Ramsey, State of Minnesota

I hereby certify that this plat of SHELLA'S ADDITION was filed in the office of the Registrar of Titles for public record on this \_\_\_ day of \_\_\_, 2007, at \_\_\_ o'clock \_\_\_ M. and was duly filed in Book \_\_\_ of Plats, Page \_\_\_, as Document Number \_\_\_.

Deputy Registrar of Titles

DRAINAGE AND UTILITY EASEMENTS SHOWN THUS:



BEING 5 FEET IN WIDTH, UNLESS OTHERWISE INDICATED, ADJOINING LOT LINES AND EASEMENT CENTER LINES, AS SHOWN ON THIS PLAT.