

41.

# DANFORTH PARK,

*Being a Rearrangement of Lots 37, 38, 43, 44, 45 and 46 of*

## DUFFY'S ADDITION TO COTTAGE HOMES,

SAINT PAUL, MINN.

Scale: 1 in. 100 feet.

STATE OF MINNESOTA, 1886.  
 County of Ramsey, 1886.  
 Office of the Registrar of Deeds.  
 This is to certify that the within instrument was filed for Record in the Office, at St. Paul, on the 11th day of January, A. D. 1886 at 10 o'clock A. M., and that the same was duly recorded in Book 19 of Deeds, pages 41, 42, 43, 44, 45, 46.  
 R. C. Farley  
 Registrar of Deeds.

This plat document is an UNOFFICIAL copy of a Subdivision Plat or Registered Land Survey and is made available for information purposes only.  
 To obtain an official copy please contact the Ramsey County Recorder's Office.



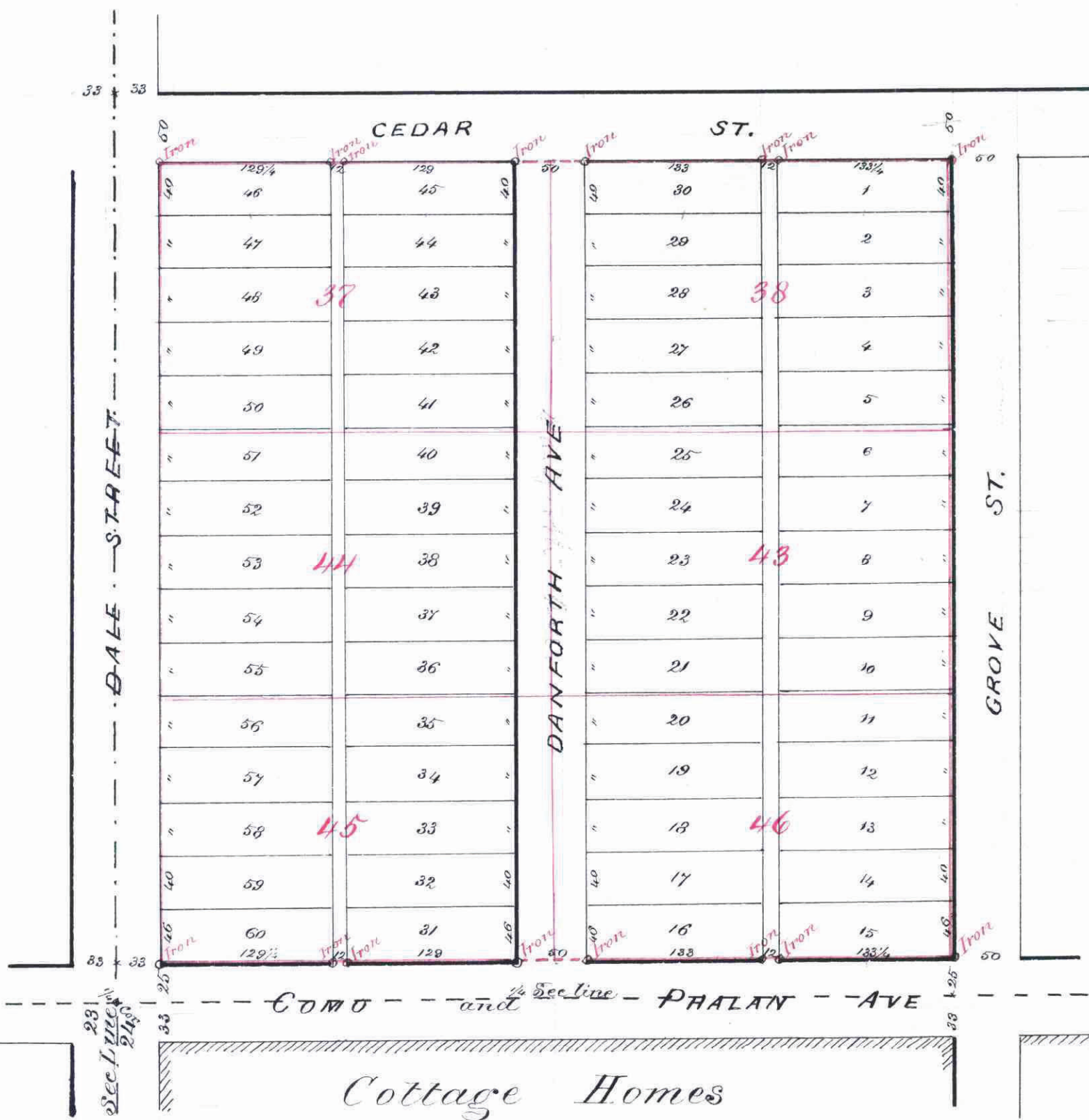
I hereby certify to having Surveyed & Platted the property as described on this Map as Danforth Park and have placed Iron monuments at the corners of each and every block as shown on this Map, and the same is correct.

*W. F. Nicholl*  
 Surveyor

State of Minnesota,  
 County of Ramsey  
 On this 19<sup>th</sup> Day of December A. D. 1885 personally appeared before me the undersigned, Thomas F. Nicholl to me well known & acknowledged that he executed the foregoing certificate as his own free act and deed.

Charles C. Fairchild  
 Notary Public  
 Ramsey Co., Minnesota

Taxes Paid Jan'y 13 1886  
*Just O'Brien*  
 County Auditor  
 Ramsey Co., Minnesota.



This is to certify that Willis Danforth and Nancy Ann Danforth (his wife) of the City of Milwaukee and State of Wisconsin are the proprietors of the S.W. 1/4 of the S.W. 1/4 of the N.W. 1/4 of Section 24 Township 29 Range 23 otherwise known as above described at head of this Map, have caused the same to be Surveyed and platted and hereafter known as 'Danforth Park' as shown by this Plat and hereby dedicate to the public and for the public use for ever all the Streets, Avenues & Alleys as herein indicated.  
 Witness our hands and Seals this 22<sup>nd</sup> day of December 1885

In presence of  
*James M. Miller* Willis Danforth  
*Edward Butler* Nancy Ann Danforth  
*Chas. J. Stage*

State of Wisconsin  
 County of Milwaukee  
 On this 22<sup>nd</sup> day of December 1885 personally came before me the undersigned Willis Danforth and Nancy Ann Danforth to me known and who acknowledged that they executed the foregoing certificate for the uses and purposes therein expressed.

*Edward Butler*  
 Notary Public  
 County of Milwaukee

Accepted and approved this 9<sup>th</sup> day of January A. D. 1886.

*Wm A. Ken Blake*  
*Wm Starkey*  
 Plat Commissioners