

BRIGHTON CORPORATE PARK VI

KNOW ALL MEN BY THESE PRESENTS: That Donatelle Associates, LLC, a Minnesota limited liability company, owner of the following described property situated in the City of New Brighton, County of Ramsey, State of Minnesota:

Lot 1, Block 1, BRIGHTON CORPORATE PARK III and Lot 1, Block 1, BRIGHTON CORPORATE PARK V.

Has caused the same to be surveyed and platted as BRIGHTON CORPORATE PARK VI and does hereby dedicate to the public for public use forever the drainage and utility easements as shown on this plat.

In witness whereof said Donatelle Associates, LLC, a Minnesota limited liability company, has caused these presents to be signed by its proper officers this 10th day of APRIL, 2003.

Signed: Donatelle Associates, LLC
Charles S. Donatelle
Charles S. Donatelle, Chief Manager
Michael J. Donatelle
Michael J. Donatelle, Chief Manager

State of Minnesota
County of Ramsey

The foregoing instrument was acknowledged before me this 10th day of April, 2003, by Charles S. Donatelle, Chief Manager and Michael J. Donatelle, Chief Manager of Donatelle Associates, LLC, a Minnesota limited liability company, on behalf of the company.



Shawn F. Anderson
Notary Public, Ramsey County, Minnesota
My Commission Expires January 31, 2005

I hereby certify that I have surveyed and platted the property described on this plat as BRIGHTON CORPORATE PARK VI: that this plat is a correct representation of the survey; that all distances are correctly shown on the plat in feet and hundredths of a foot; that all monuments have been correctly placed in the ground as shown; that the outside boundary lines are correctly designated on the plat; and there are no wet lands as defined in Minnesota Statutes, Section 505.02, Subd. 1, or public highways to be designated other than as shown on this plat.

Jason E. Rud
Jason E. Rud, Land Surveyor
Minnesota License No. 41578

State of Minnesota
County of Anoka

The foregoing Surveyor's Certificate was acknowledged before me this 9th day of April, 2003, by Jason E. Rud, a Licensed Land Surveyor.



Cathleen R. Bruno
Notary Public, Anoka County, Minnesota
My Commission Expires January 31, 2005

We do hereby certify that on the 26 day of March, 2002, the City Council of the City of New Brighton, Minnesota, approved this plat. All monuments will be set as specified by the City Council and as stated on this plat, according to Minnesota Statutes, Section 505.02, Subd. 1.

Steve Larson
Mayor
Daniel R. Thies
Clerk

Taxes payable in the year 2003 on the land herein described have been paid, also there are no delinquent taxes and transfer entered this 22nd day of May, 2003.

Dorothy McClung, Director
Department of Property Taxation
By Yvonne Cornejo, Deputy

Pursuant to Minnesota Statutes, Section 383A.42, this plat has been examined and is approved this 22nd day of MAY, 2003, and the conditions of Minnesota Statutes, Section 505.03, Subdivision 2, have been fulfilled.

David D. Claypool
David D. Claypool, L.S.
Ramsey County Surveyor

County Recorder
County of Ramsey, State of Minnesota

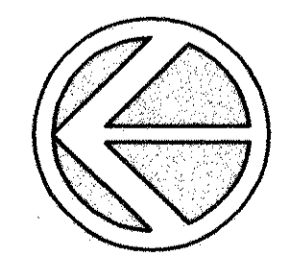
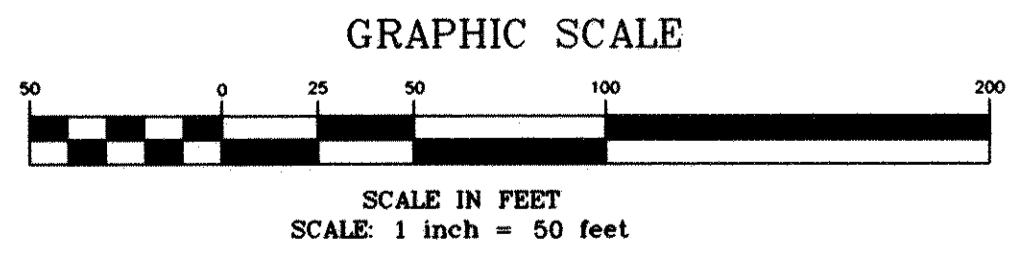
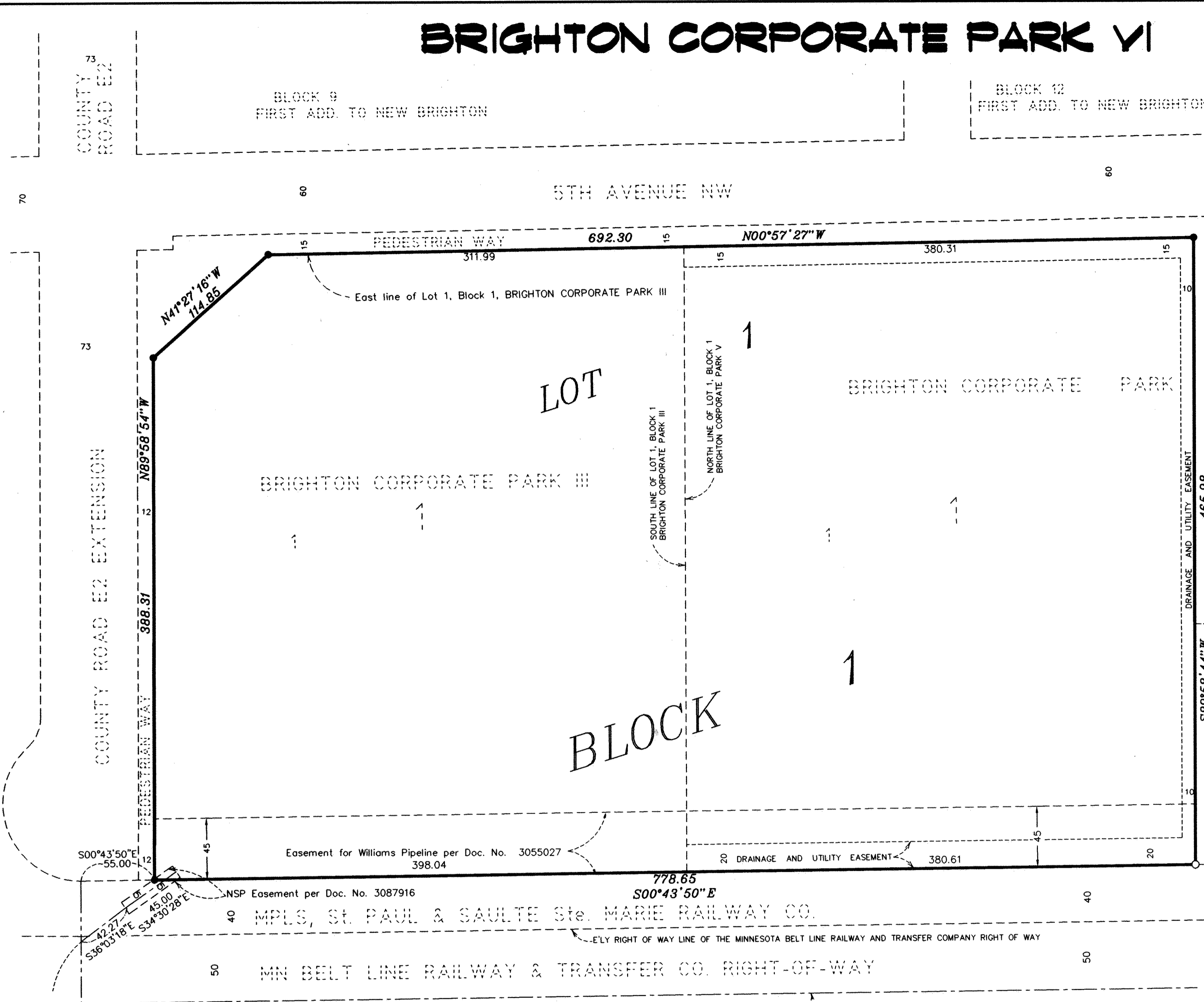
I hereby certify that this plat of BRIGHTON CORPORATE PARK VI was filed in the office of the County Recorder for public record on this 22nd day of MAY, 2003 at 9 o'clock A.M. and was duly filed in Book 119 of Plats, Page 3 as Document Number 3625072.

Deputy County Recorder

Registrar of Titles
County of Ramsey, State of Minnesota

I hereby certify that this plat of BRIGHTON CORPORATE PARK VI was filed in the office of the Registrar of Titles for public record on this 22nd day of MAY, 2003 at 9 o'clock A.M. and was duly filed in Book 119 of Plats, Page 3 as Document Number 3625072.

Deputy Registrar of Titles



For the purposes of this plat the East Line of Lot 1, Block 1, BRIGHTON CORPORATE PARK III, Ramsey County, Minnesota, is assumed to have a bearing of N00°57'27"W.

- Denotes found 5/8 inch iron pipe monument marked "kemper 18407"
- Denotes set 1/2 inch by 18 inch iron pipe monument marked R.L.S. 41578

E. G. RUD & SONS, INC.
Land Surveyors

