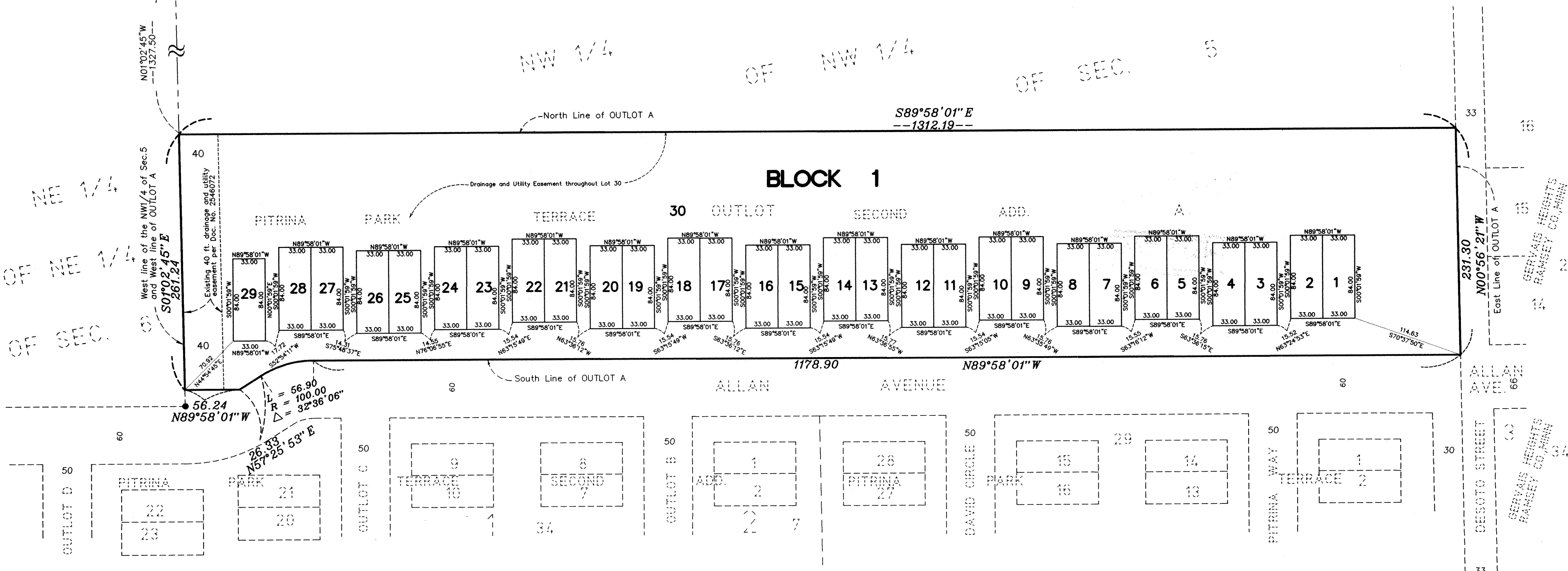


PITRINA PARK TERRACE THIRD ADDITION

NW corner of Sec. 5, T29, R22
Ramsey County Stone Monument



KNOW ALL MEN BY THESE PRESENTS: That Fratt's Land Company, a Minnesota general partnership, owner of the following described property situated in the City of Little Canada, County of Ramsey, State of Minnesota:

Outlot A, PITRINA PARK TERRACE SECOND ADDITION, County of Ramsey, State of Minnesota.

Has caused the same to be surveyed and platted as PITRINA PARK TERRACE THIRD ADDITION and does hereby dedicate to the public for public use forever the drainage and utility easement throughout Lot 30 as shown on this plat.

In witness whereof said Fratt's Land Company, a Minnesota general partnership, has caused these presents to be signed by Frank M. Frattalone, a general partner, and Anthony F. Frattalone, a general partner, this 10 day of Mar, 1999.

Signed: Fratt's Land Company

Frank M. Frattalone
Frank M. Frattalone, a general partner

Anthony F. Frattalone
Anthony F. Frattalone, a general partner

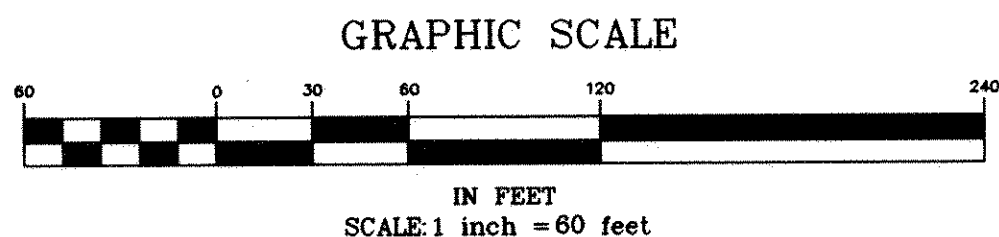
STATE OF MINNESOTA
COUNTY OF Wash
The foregoing instrument was acknowledged before me this 10 day of Mar, 1999, by Frank M. Frattalone and Anthony F. Frattalone, general partners of Fratt's Land Company, a Minnesota general partnership, on behalf of the partnership.

Susan Kees
Notary Public, Wash County, Minnesota
My Commission Expires 1-21-2000



I hereby certify that I have surveyed and platted the property described on this plat as PITRINA PARK TERRACE THIRD ADDITION; that this plat is a correct representation of the survey; that all distances are correctly shown on the plat in feet and hundredths of a foot; that all monuments will be correctly placed in the ground as shown; that the outside boundary lines are correctly designated on the plat; and there are no wet lands as defined in Minnesota Statutes, Section 505.02, Subd. 1, or public highways to be designated other than as shown on this plat.

John A. Rengo
John A. Rengo, Land Surveyor
Minnesota License No. 25344



At all lot corners with no monument symbol shown will be set a 1/2 inch by 18 inch iron pipe marked R.L.S. 25344 within one year of the recording of this plat.

● Denotes found 1/2 inch iron pipe monument marked 18407

The orientation of this bearing system is based on the West line of the NW1/4 of Section 5, Township 29, Range 22, Ramsey County, Minnesota which is assumed to have a bearing of N01°02'45\"/>

STATE OF MINNESOTA
COUNTY OF ANOKA
The foregoing Surveyor's Certificate was acknowledged before me this 8 day of March, 1999, by John A. Rengo, a Licensed Land Surveyor.

Cathleen R. Bruno
Notary Public, Anoka County, Minnesota
My Commission Expires January 31, 2000



City of Little Canada
We do hereby certify that on the 27th day of January, 1999, the City Council of the City of Little Canada, Minnesota, approved this plat. All monuments will be set as specified by the City Council and as stated on this plat, according to Minnesota Statutes, Section 505.02, Subd. 1.

Michael D. Fahy
Mayor

John R. Ham
Clerk

Taxes payable in the year 1999 on the land herein described have been paid, also there are no delinquent taxes and transfer entered this 23rd day of MARCH, 1999.

Donette Mellang
Director
Department of Property Taxation

By *Abdus Khan*, Deputy

Pursuant to Minnesota Statutes, Section 383A.42, this plat has been examined and is approved this 23rd day of March, 1999, and the conditions of Minnesota Statutes, Section 505.03, Subd. 2, have been fulfilled.

David D. Claypool
David D. Claypool, L.S.
Ramsey County Surveyor

County Recorder
County of Ramsey, State of Minnesota
I hereby certify that this plat of PITRINA PARK TERRACE THIRD ADDITION was filed in the office of the County Recorder for public record on this 21st day of APRIL, 1999, at 2:21 o'clock P.M. and was duly filed in Book 115 of Plats, Page 17 as Document Number 3137745.

Deputy County Recorder

E. G. RUD & SONS, INC
LAND SURVEYORS

