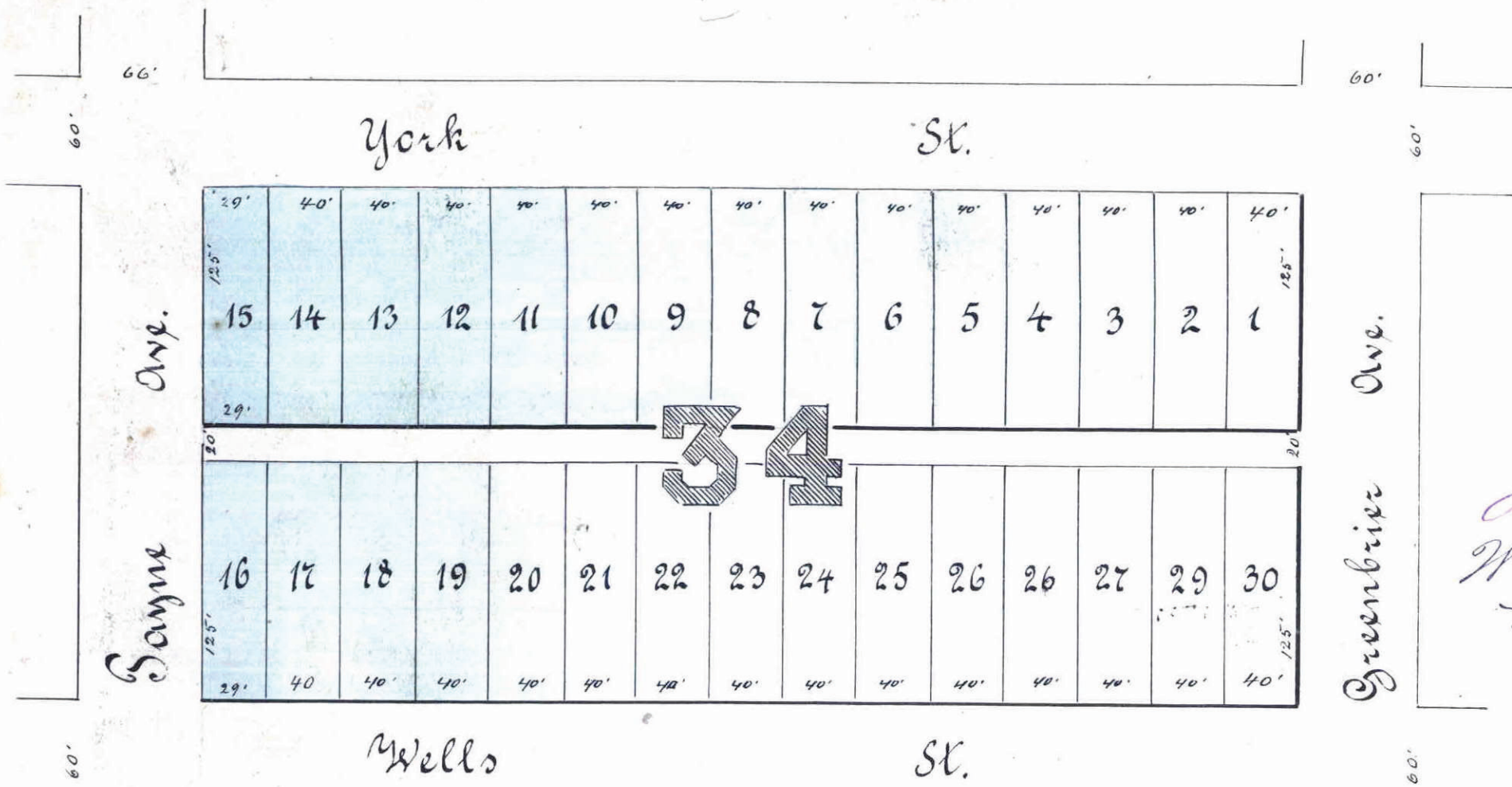


CHAS. WEIDE'S SUBDIVISION

of Block 34 of ARLINGTON HILLS Addition

to ST. PAUL.



St. Paul, October 14th 1882

approved:

James Starkey
Wm A. Taublyke
J. P. Johnson } Platcommission

Examined and approved
L. W. Rundlett
 City Engr
 Oct 16th 1882 -

I hereby certify that this is a correct Plat of Chas. Weide's Subdivision of Block 34 of Arlington Hills Addition to St. Paul as surveyed and plotted by me in the Month of October 1882

St. Paul, October 10th 1882

E. A. Hoerck

Surveyor.

We the undersigned Chas. Weide and Luisa Weide his wife proprietors of Chas. Weide's Subdivision of Block 34 of Arlington Hills Addition to St. Paul, do hereby certify, that we have caused the same to be surveyed and plotted as represented by this plat and we hereby give the Alley for public use.

St. Paul this 12th Day of October 1882

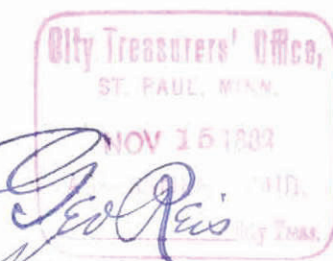
Chas. Weide
Louisa Weide

State of Minnesota
 County of Ramsey

Before me *Benjamin F. Schurman* a notary public in and for Ramsey County State of Minnesota this 12th Day of October 1882 in person appeared Chas. Weide and Luisa Weide his wife to me personally known to be the parties described in, and who signed the above certificate, and they each acknowledged that they executed the same freely and voluntarily for the uses and purposes therein expressed.

St. Paul
 October 12th 1882

Benjamin F. Schurman
 Notary public.



Geo. Reis
 Clerk

Taxes Paid
 Noobr 15/82
J. M. Cardy
 County Auditor

STATE OF MINNESOTA,
 County of Ramsey,
 OFFICE OF THE REGISTER OF DEEDS.
 This is to certify that the within instrument was filed for record in this office, at St. Paul, on the 15th day of Nov. A. D. 1882 at 4:50'clock P. M. and that the same was duly recorded in Book R. of Plats pages 29
W. C. Whinn
 Register of Deeds.
 By _____ Deputy.

This plat document is an UNOFFICIAL copy of a Subdivision Plat or Registered Land Survey and is made available for information purposes only.
 To obtain an official copy please contact the Ramsey County Recorder's Office.

