

SOUTHWIND OF ROSEVILLE

KNOW ALL MEN BY THESE PRESENTS: That Southwind of Roseville, L.L.C., a Minnesota limited liability company, owner of the following described property situated in the City of Roseville, County of Ramsey, State of Minnesota:

Lots 3, 4, 5, 6, 8, 9, 10, 11, 12, 13 and 14 all in Block 1, ZEECE ADDITION, Ramsey County, Minnesota according to the recorded plat thereof. Together with that part of vacated Albemarle Court as platted in said ZEECE ADDITION which lies south of the easterly extension of the north line of Lot 4, Block 1, said ZEECE ADDITION;

And that Southwind of Roseville, L.L.C., a Minnesota limited liability company, owner and Central Bank, Stillwater Branch, a Minnesota Corporation, mortgagee of the following described property situated in the City of Roseville, County of Ramsey, State of Minnesota:

Lot 15, Block 1, ZEECE ADDITION, Ramsey County, Minnesota, according to the recorded plat thereof;

Lot 1, THORNTON'S SUBDIVISION OF THE NE1/4 OF SECTION 13, TOWN 29, RANGE 23, Ramsey County, Minnesota, according to the recorded plat thereof, except that part of the North 150 feet of said Lot 1, lying Easterly of the West 80 feet of said Lot 1 and except the South 240 feet of said Lot 1 and except the East 147 feet of said Lot 1.

Have caused the same to be surveyed and platted as SOUTHWIND OF ROSEVILLE and do hereby dedicate to the public for public use forever the thoroughfare, cul-de-sac and the drainage and utility easement as shown on this plat.

In witness whereof said Southwind of Roseville, L.L.C., a Minnesota limited liability company, has caused these presents to be signed by its proper officer this 16 day of September, 1997.

Signed: Southwind of Roseville, L.L.C.

Lawrence M. Alm
Lawrence M. Alm, President

STATE OF Minnesota
COUNTY OF Ramsey

The foregoing instrument was acknowledged before me this 16 day of September, 1997 by Lawrence M. Alm, President of Southwind of Roseville, L.L.C., a Minnesota limited liability company, on behalf of the company.

Barbara A. Rodriguez
Notary Public, Ramsey County, Minnesota
My Commission Expires January 31, 2000



In witness whereof said Central Bank, Stillwater Branch, a Minnesota Corporation, has caused these presents to be signed by its proper officer this 16 day of September, 1997.

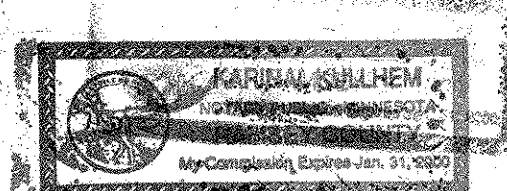
Signed: Central Bank, Stillwater Branch

Scott Faust
Scott Faust, Vice President

STATE OF Minnesota
COUNTY OF Washington

The foregoing instrument was acknowledged before me this 16 day of September, 1997 by Scott Faust, Vice President of Central Bank, Stillwater Branch, a Minnesota Corporation, on behalf of the corporation.

Karin V. Buckner
Notary Public, Ramsey County, Minnesota
My Commission Expires January 31, 2000



I hereby certify that I have surveyed and platted the property described on this plat as SOUTHWIND OF ROSEVILLE; that this plat is a correct representation of the survey; that all distances are correctly shown on the plat in feet and hundredths of a foot; that all monuments will be correctly placed in the ground as shown; that the outside boundary lines are correctly designated on the plat; and there are no wet lands as defined in Minnesota Statutes, Section 505.02, Subd. 1, or public highways to be designated other than as shown on this plat.

Ernest G. Rud
Ernest G. Rud, Land Surveyor
Minnesota License No. 9808

STATE OF MINNESOTA
COUNTY OF ANOKA

The foregoing Surveyor's Certificate was acknowledged before me this 16th day of September, 1997 by Ernest G. Rud, a Licensed Land Surveyor.



John A. Rengo
Notary Public, Anoka County, Minnesota
My Commission Expires January 31, 2000

City of Roseville

We do hereby certify that on the 21st day of April, 1997, the City Council of the City of Roseville, Minnesota, approved this plat. Monuments will be set as specified by the City Council and as stated on this plat, according to Minnesota Statutes, Section 505.02, Subd. 1.

James H. ...
Mayor

Jim ...
Manager

Taxes payable in the year 1997 on the land herein described have been paid, also there are no delinquent taxes and transfer entered this 19th day of September, 1997.

Mary Mahoney Acting, Director
Department of Property Taxation

By Abdul Khan, Deputy

Pursuant to Minnesota Statutes, Section 383A.42, this plat has been examined and is approved this 22nd day of September, 1997 and the conditions of Minnesota Statutes, Section 505.03, Subdivision 2, have been fulfilled.

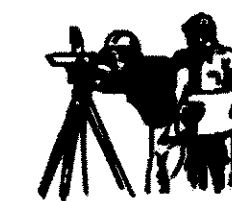
David D. Claypool
David D. Claypool, L.S.
Ramsey County Surveyor

County Recorder
County of Ramsey, State of Minnesota

I hereby certify that this plat of SOUTHWIND OF ROSEVILLE was filed in the office of the County Recorder for public record on this 25th day of SEPTEMBER, 1997, at 1:10 o'clock P.M., and was duly filed in Book 113 of Plats, Pages 23 and 24, as Document Number 3014949.

Deputy County Recorder

E.G. RUD & SONS, INC.
LAND SURVEYORS

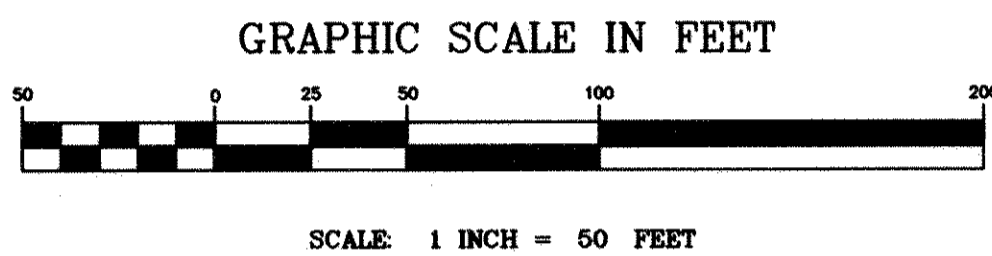


SOUTHWIND OF ROSEVILLE



Ramsey County
Cast Iron Monument
North Quarter Corner
Sec. 13, T.29, R.23

Ramsey County
Cast Iron Monument
NE Corner of
Sec. 13, T.29, R.23



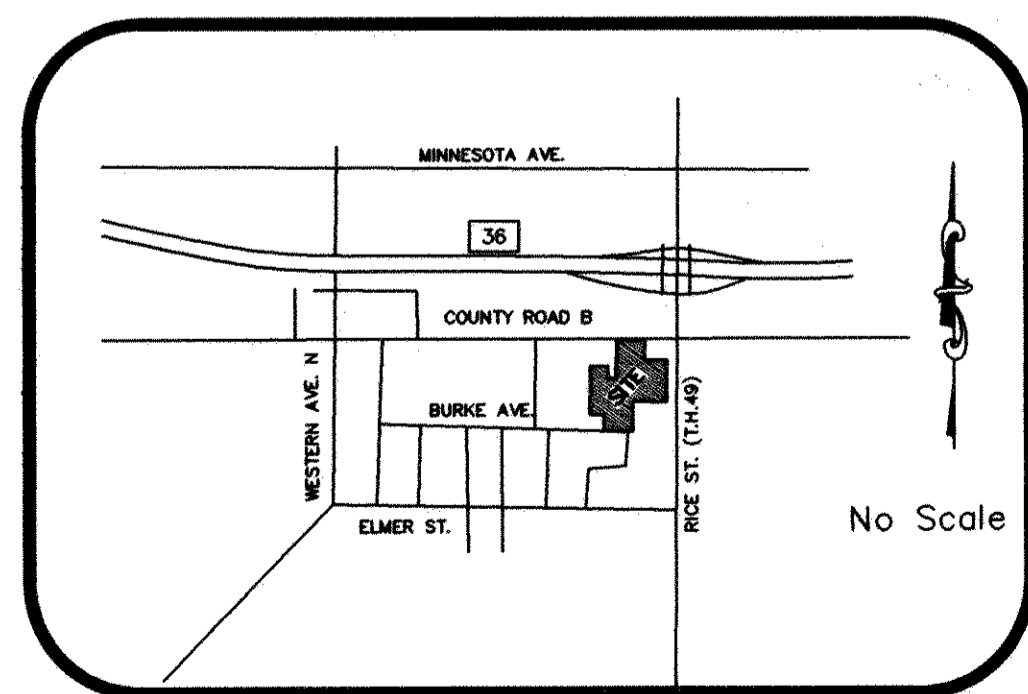
• DENOTES FOUND 1/2 INCH IRON PIPE, MARKED BY RLS 10459, UNLESS OTHERWISE SHOWN.

PLAT CORNERS WITH NO MONUMENTS SHOWN WILL BE MONUMENTED BY A 1/2 INCH BY 14 INCH IRON PIPE MARKED BY RLS 9808 AND SET WITHIN ONE YEAR OF THE RECORDING OF THIS PLAT.

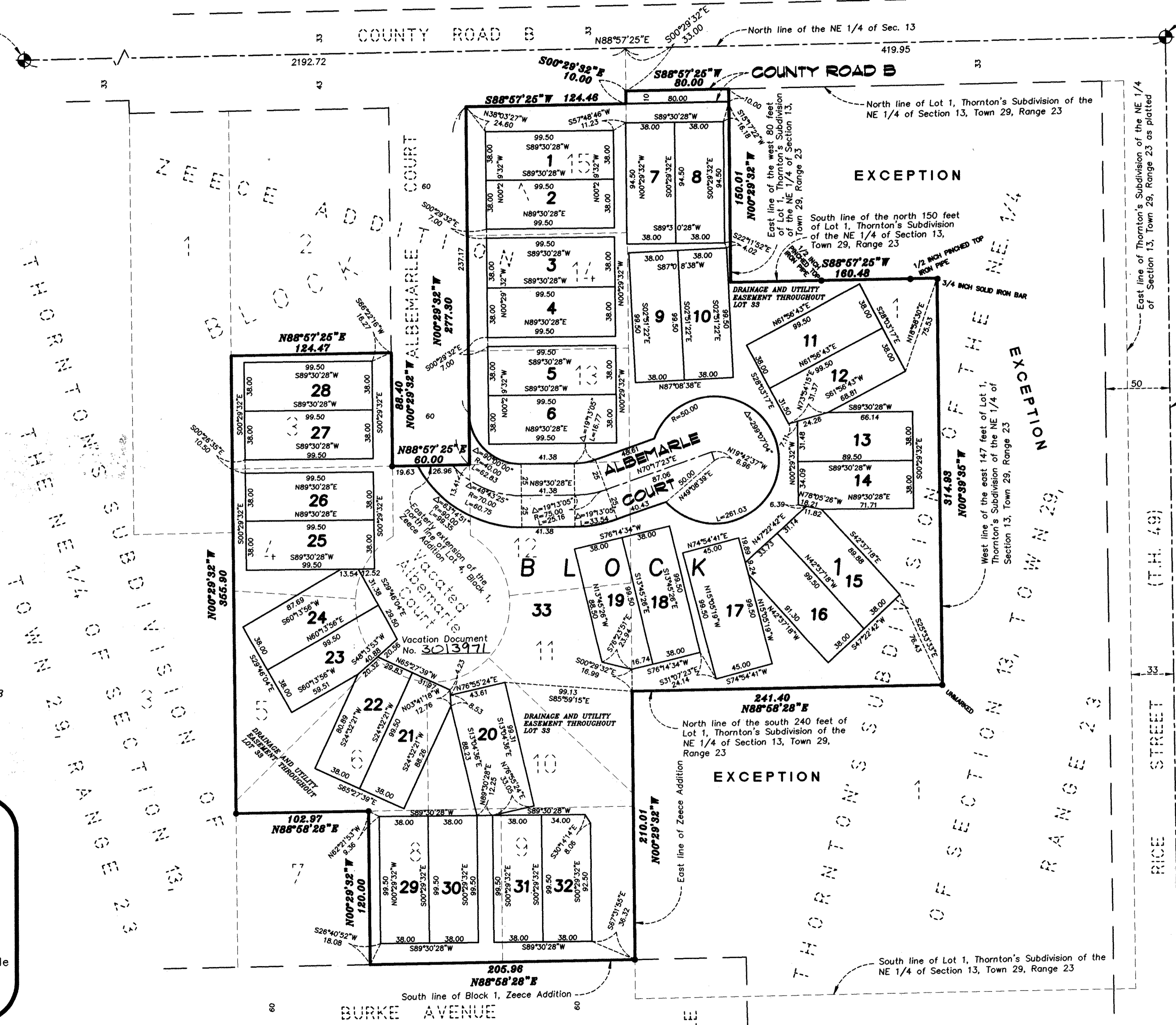
THE ORIENTATION OF THIS BEARING SYSTEM IS BASED UPON THE NORTH LINE OF THE NE 1/4 OF SEC. 13, T.29, R.23, WHICH IS ASSUMED TO BEAR S88°57'25" W.

DRAINAGE AND UTILITY EASEMENT THROUGHOUT LOT 33

VICINITY MAP



Sections 12 and 13, Twp. 29, Rge. 23
Ramsey County, Minnesota



E.G. RUD & SONS, INC.
LAND SURVEYORS

