

City of Ramsey I the undersigned do hereby declare  
 that I have had the annexed plat made for  
 the purpose of an addition to St Paul Minnesota  
 to be known as "Wann's addition to St Paul"  
 and that I intend the ground embraced therein  
 to be used as lots according to the sizes and  
 subdivisions marked out thereon and that I give  
 all streets and alleys therein for public use.

# WANN'S ADD'N

to  
**St Paul.**

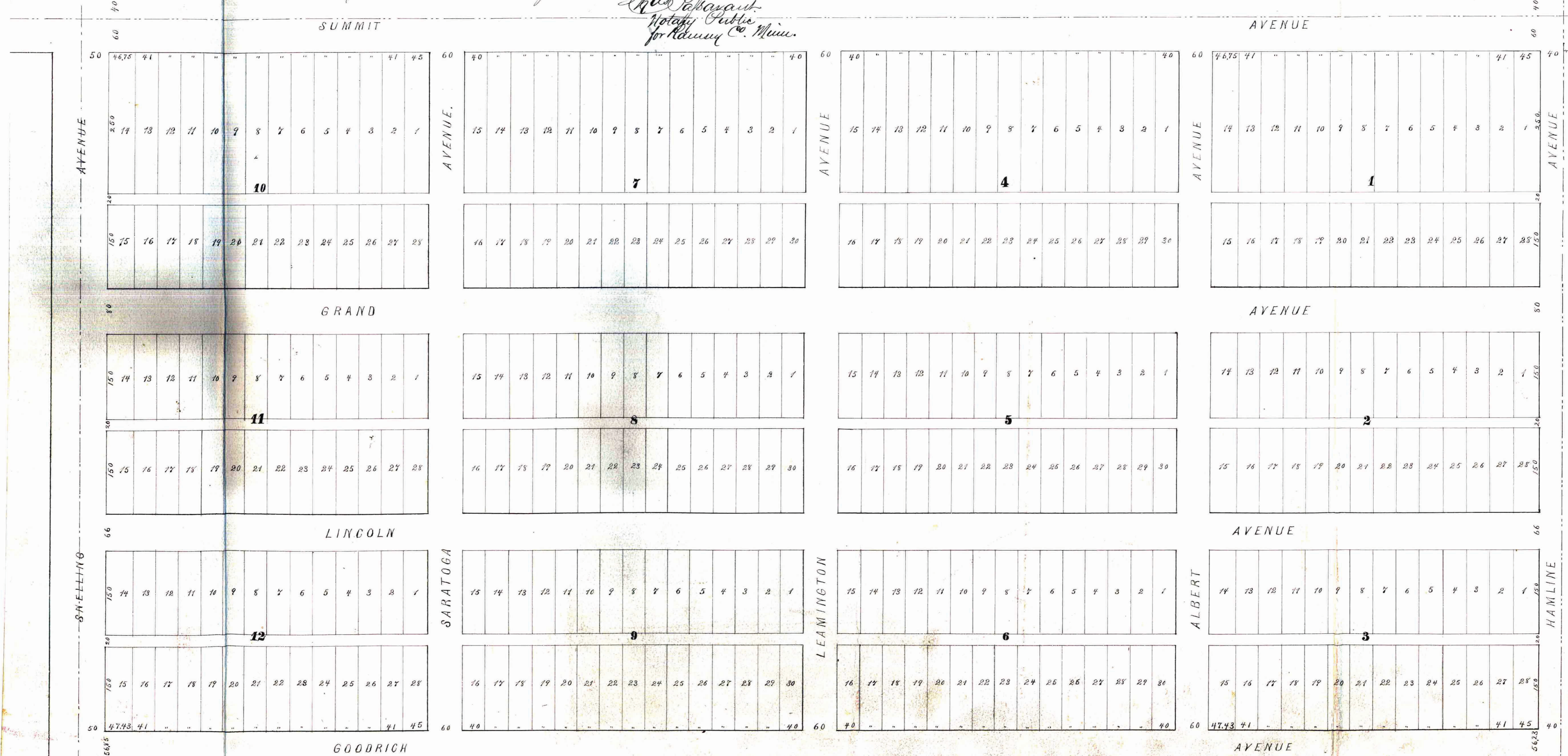
This plat document is an UNOFFICIAL copy of a Subdivision Plat or Registered Land Survey and is made available for information purposes only.

To obtain an official copy please contact the Ramsey County Recorder's Office.

In witness whereof I have hereunto set my hand and seal this twentieth day of August A.D. 1874.  
 Signed sealed in presence of  
 Charles Peterson  
 John Wann

On this 20<sup>th</sup> day of August A.D. 1874  
 I personally appeared before me John Wann to me well known  
 to be the identical person described in and who executed the above cert. people  
 and acknowledged that he executed the same for the uses and purposes therein expressed.

Charles Peterson  
 Notary Public  
 for Ramsey Co. Minn.



Office of Register of Deeds Ramsey Co Minn  
 Filed on the 22<sup>nd</sup> day of August A.D. 1874  
 Chas. B. M.  
 Theodore Zander  
 Register of Deeds  
 By Henry Sigman Deputy

County Auditor's Office  
 Ramsey Co. Minn.  
 Paid  
 St Paul Aug 22 1874  
 H. C. Davis  
 County Auditor

St Paul Minn Aug 20 1874  
 I certify that this is a correct plat of Wann's Addition to St Paul and  
 that said Addition embraces the north half of the southeast quarter  
 of section three, township eight north, range twenty three west.  
 Charles J. Statler  
 City Engineer