

SILVER LAKE CENTER

KNOW ALL MEN BY THESE PRESENTS: That Ste. Marie Company, a Minnesota corporation, fee owner, and First Bank National Association, a national banking association, mortgagee of the following described property situated in the City of Saint Anthony, County of Ramsey, State of Minnesota, to wit:

Lot 1, Block 1, APACHE PLAZA 4TH ADDITION, according to the recorded plat thereof, and situate in Ramsey County, Minnesota;

And

Lots 1, 2, 3 and 4, Block 1, APACHE PLAZA 5TH ADDITION, according to the recorded plat thereof, and situate in Ramsey County, Minnesota.

Have caused the same to be surveyed and platted as SILVER LAKE CENTER and do hereby dedicate to the public for public use forever the drainage and utility easements as shown on this plat.

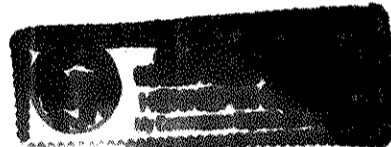
In witness whereof said Ste. Marie Company, a Minnesota corporation, has caused these presents to be signed by its proper officer this 24th day of April, 1996.

Signed: Ste. Marie Company

Mary Jo Pauline, Vice President

STATE OF MINNESOTA
COUNTY OF Hennepin

The foregoing instrument was acknowledged before me this 24th day of April, 1996 by Mary T. Rothchild, its Vice-President of Ste. Marie Company, a Minnesota corporation, on behalf of the corporation.



J. M. Yeaman
Notary Public, Ramsey County, Minnesota
My Commission Expires January 31, 2000

In witness whereof said First Bank National Association, a national banking association, successor through merger to First Bank East, National Association, a national banking association, formerly known (prior to charter conversion) as First Bank East, a Minnesota corporation, successor through consolidation and merger with First State Bank of Saint Paul, a Minnesota corporation, has caused these presents to be signed by its proper officer this 24th day of April, 1996.

Signed: First Bank National Association

Mary Jo Pauline, Vice President

STATE OF MINNESOTA
COUNTY OF Hennepin

The foregoing instrument was acknowledged before me this 24th day of April, 1996 by Mary T. Rothchild, Vice-President of First Bank National Association, a national banking association, successor through merger to First Bank East, National Association, a national banking association, formerly known (prior to charter conversion) as First Bank East, a Minnesota corporation, successor through consolidation and merger with First State Bank of Saint Paul, a Minnesota corporation, on behalf of the association.



J. M. Yeaman
Notary Public, Ramsey County, Minnesota
My Commission Expires January 31, 2000

I hereby certify that I have surveyed and platted the property described on this plat as SILVER LAKE CENTER; that this plat is a correct representation of the survey; that all distances are correctly shown on the plat in feet and hundredths of a foot; that all monuments have been correctly placed in the ground as shown; that the outside boundary lines are correctly designated on the plat; and that there are no wet lands as defined in Minnesota Statutes, Section 505.02, Subd. 1, or public highways to be designated other than as shown on this plat.

Martin J. Weber
Martin J. Weber, Land Surveyor
Minnesota License No. 12043

STATE OF MINNESOTA
COUNTY OF Wright

The foregoing Surveyor's Certificate was acknowledged before me this 23rd day of April, 1996 by Martin J. Weber, a Licensed Land Surveyor.



Diane C. Weber
Notary Public, Wright County, Minnesota
My Commission Expires January 31, 2000

City of Saint Anthony

We do hereby certify that on the 9th day of April, 1996, the City Council of the City of Saint Anthony, Minnesota, approved this plat. All monuments will be set as specified by the City Council and as stated on this plat, according to Minnesota Statutes, Section 505.02, Subd. 1.

Clarence J. Ranallo, Mayor

Cornie J. Kropelin, Clerk

Taxes payable in the year 1996 on the land herein described have been paid, also there are no delinquent taxes and transfer entered this 9th day of May, 1996.

Lou McKenna, Director
Department of Property Taxation

By Jennifer Adwin, Deputy

Pursuant to Minnesota Statutes, Section 383A.42, this plat has been examined and is approved this 7th day of May, 1996 and the conditions of Minnesota Statutes, Section 505.03, Subdivision 2, have been fulfilled.

David D. Claypool
David D. Claypool, L.S.
Ramsey County Surveyor

County Recorder, County of Ramsey, State of Minnesota

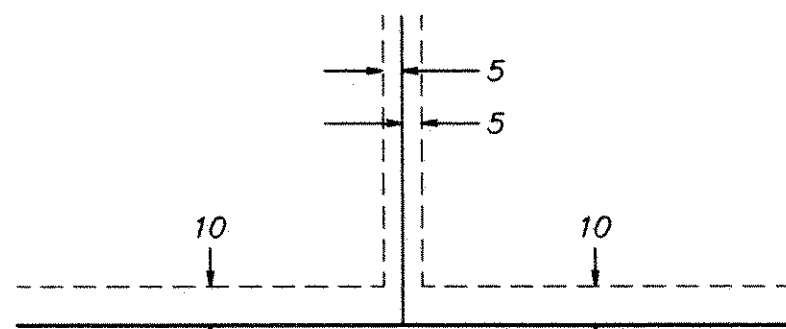
I hereby certify that this plat of SILVER LAKE CENTER was filed in the office of the County Recorder for public record on this 10th day of MAY, 1996, at 12:02 o'clock P.M. and was duly filed in Book 112 of Plats, Pages 6, 7 and 8, as Document Number 2927174.

Lou McKenna, County Recorder

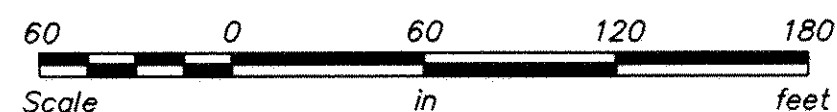
By _____, Deputy

SILVER LAKE CENTER

Drainage and Utility Easements are shown thus:



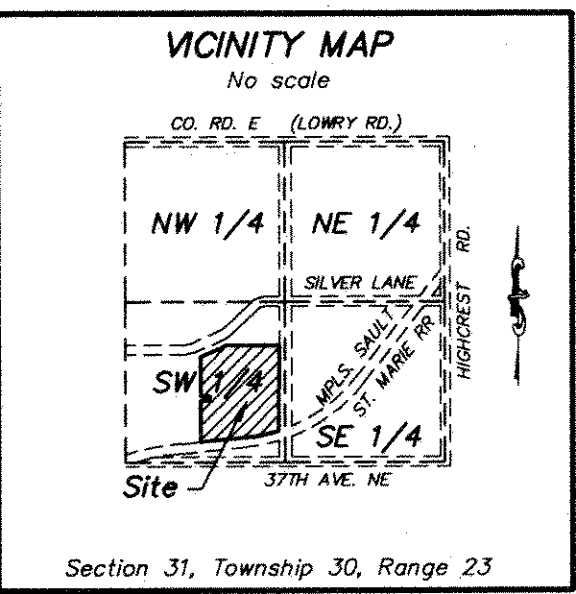
Being 5 feet in width, unless otherwise indicated, and adjoining lot lines, and 10 feet in width, unless otherwise indicated, and adjoining street lines as shown on this plat.



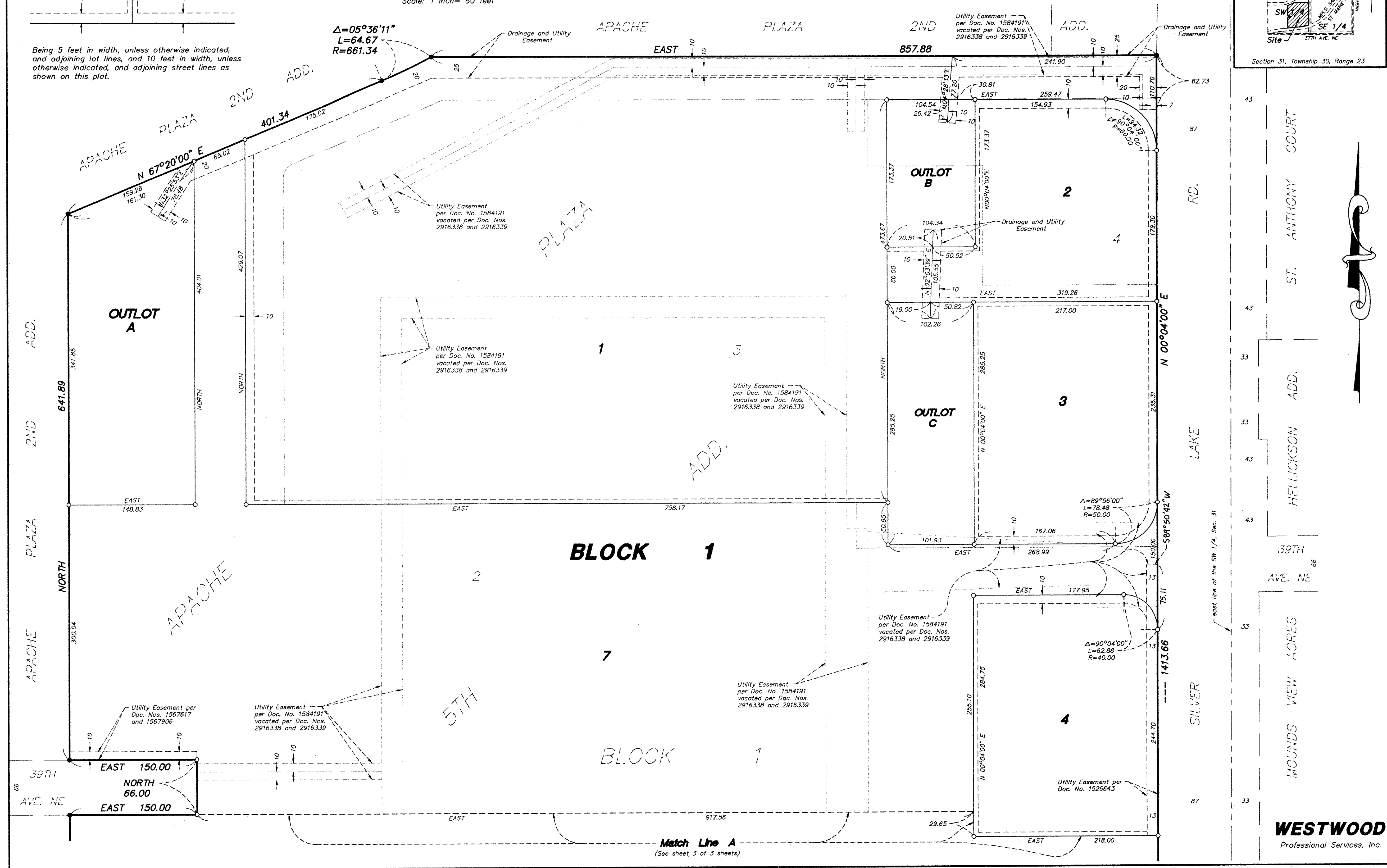
Scale: 1 inch = 60 feet

The east line of the SW 1/4, Sec. 31, Twp. 30, Rge. 23, is assumed to bear N 00°04'00" E.

- Denotes 1/2 inch by 14 inch iron rebar monument set and marked by License No. 12043
- Denotes 1/2 inch by 14 inch iron pipe monument found and marked by License No. 20281, unless otherwise shown



Section 31, Township 30, Range 23



WESTWOOD
Professional Services, Inc.

