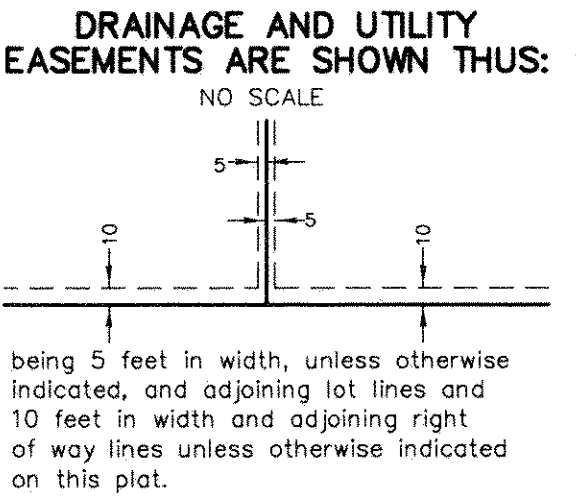
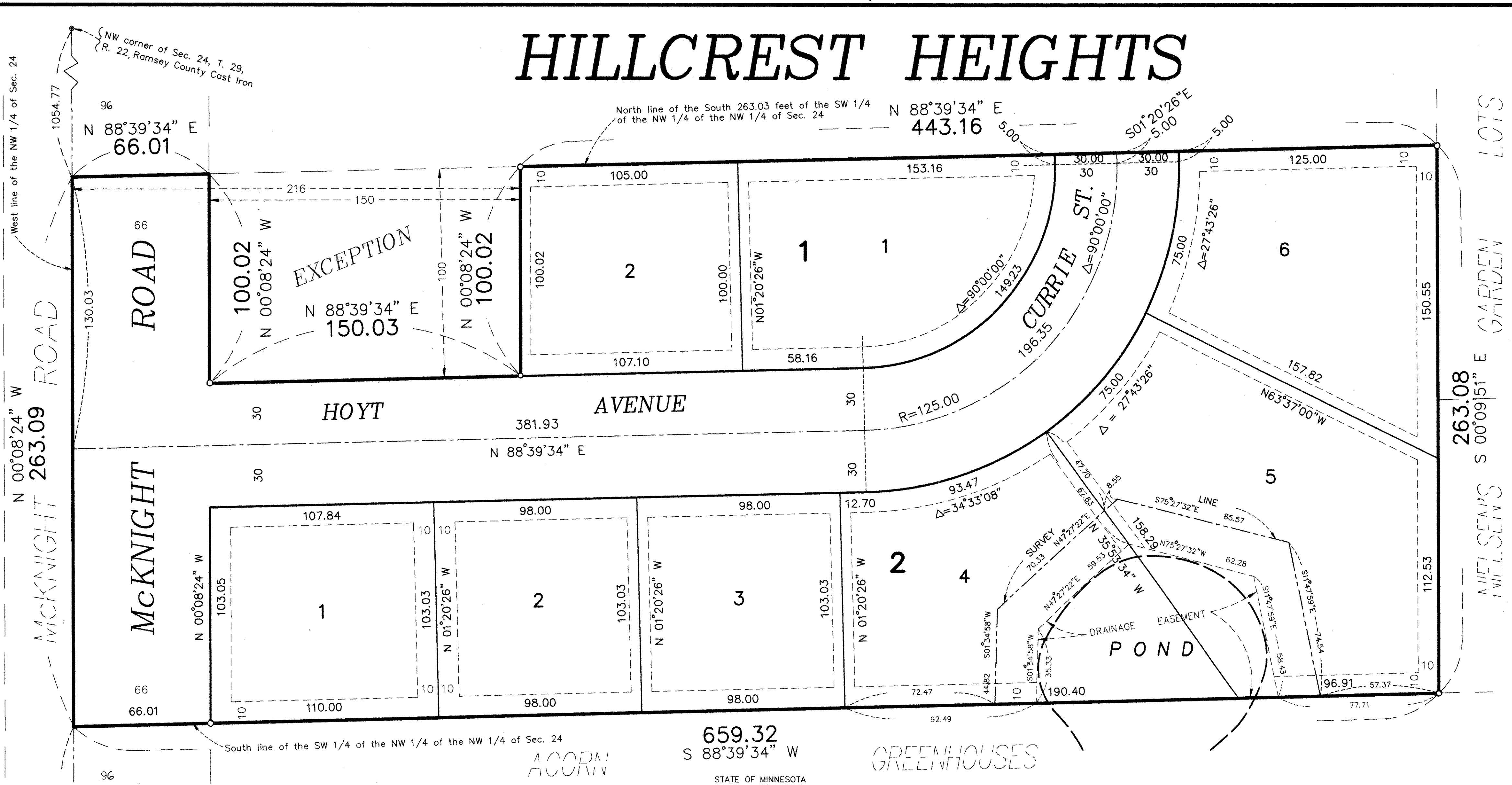


HILLCREST HEIGHTS



KNOW ALL MEN BY THESE PRESENTS: That Raymond Fred Horwath and Alma J. Horwath, husband and wife, fee owners of the following described property situated in the City of Maplewood, Ramsey County, Minnesota:

The South 263.03 feet of the Southwest Quarter of the Northwest Quarter of the Northwest Quarter of Section 24, Township 29, Range 22, except the North 100.00 feet of the South 263.03 feet of the East 150.00 feet of the West 216.00 feet thereof.

Have caused the same to be surveyed and platted as HILLCREST HEIGHTS and do hereby dedicate to the public for public use forever the thoroughfares and the drainage and utility easements and the drainage easement as shown on this plat.

In witness whereof said Raymond Fred Horwath and Alma J. Horwath, husband and wife, have hereunto set their hands this 11th day of September 19 95.

Raymond Fred Horwath
Raymond Fred Horwath

Alma J. Horwath
Alma J. Horwath

STATE OF MINNESOTA
COUNTY OF Ramsey

The foregoing instrument was acknowledged before me this 11th day of September 19 95, by Raymond Fred Horwath and by Alma J. Horwath, husband and wife.

PATRICIA E. FRY
NOTARY PUBLIC - MINNESOTA
MY COMMISSION EXPIRES
JANUARY 31, 2000

Patricia E. Fry
Notary Public, Ramsey County, Minnesota
My Commission Expires 1-31-2000

I hereby certify that I have surveyed and platted the property described on this plat as HILLCREST HEIGHTS; that this plat is a correct representation of the survey; that all distances are correctly shown on the plat in feet and hundredths of a foot; that all monuments will be correctly placed in the ground as shown; that the outside boundary lines are correctly designated on the plat; and there are no wet lands as defined in Minnesota Statutes, Section 505.02, Subd. 1, or public highways to be designated other than as shown on this plat.

Robert B. Sikich
Robert B. Sikich, Land Surveyor
Minnesota License No. 14891

STATE OF MINNESOTA
COUNTY OF ANOKA

The foregoing Surveyor's Certificate was acknowledged before me this 11th day of August 1995 by Robert B. Sikich, a Licensed Land Surveyor.

HOWARD W. ROGERS
NOTARY PUBLIC - MINNESOTA
SHERBURNE COUNTY
MY COMM. EXP. 01/31/2000

Howard W. Rogers
Notary Public, Sherburne County, Minnesota
My Commission Expires Jan. 31, 2000

City of Maplewood

We do hereby certify that on the 11th day of September 19 95, the City Council of the City of Maplewood, Minnesota, approved this plat. All monuments will be set as specified by the City Council and as stated on this plat, according to Minnesota Statutes, Section 505.02, Subd. 1.

Jay Patton Mayor
Michael A. McSweeney Manager

Taxes payable for the year 19 95 on the land herein described have been paid, also there are no delinquent taxes and transfer entered this 19th day of September 19 95.

Jon McKenna Director
Department of Property Taxation

By *Jennifer Adrian* Deputy

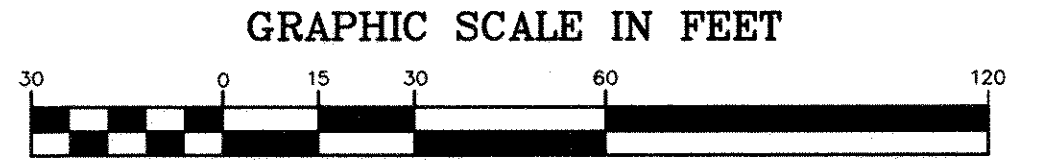
Pursuant to Minnesota Statutes, Section 383A.42, this plat has been examined and is approved this 19th day of SEPTEMBER 19 95 and the conditions of Minnesota Statutes, Section 505.03, Subdivision 2, have been fulfilled.

David D. Claypool
David D. Claypool, L.S.
Ramsey County Surveyor

County Recorder, County of Ramsey, State of Minnesota

I hereby certify that this plat of HILLCREST HEIGHTS was filed in the office of the County Recorder for public record on this 21st day of SEPTEMBER 19 95 at 2:37 o'clock P.M. and was duly filed in Book 111 of Plats, Page 19, as Document Number 2008851.

By _____ Deputy



Denotes 1/2 inch by 14 inch iron pipe monument set and marked with license number 14891

No monument symbol shown at any statute required location denotes a 1/2 inch by 14 inch iron monument that will be set on or before the 1 day of September 1996.

The south line of the SW 1/4 of the NW 1/4 of the NW 1/4 of Sec. 24, T 29, R 22 has an assumed bearing of S88°39'34"W

PIONEER engineering
LAND SURVEYORS • CIVIL ENGINEERS
LAND PLANNERS • LANDSCAPE ARCHITECTS

2422 Enterprise Drive
Mendota Heights, MN 55120
(612) 681-1914 FAX: 681-9488

625 Highway 10 N.E.
Blaine, MN 55434
(612) 783-1880 FAX: 783-1883