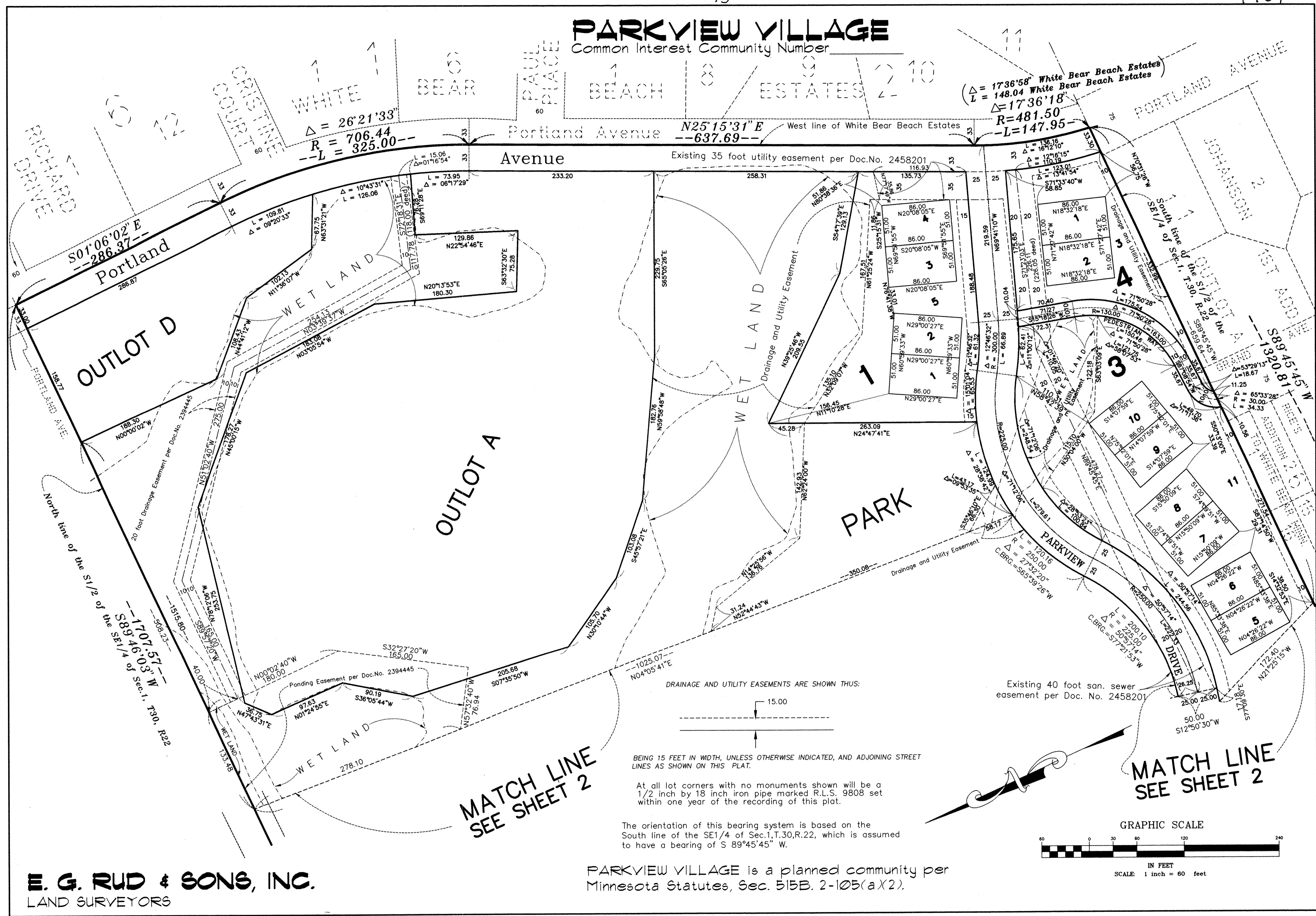


PARKVIEW VILLAGE

Common Interest Community Number _____



$\Delta = 1736'58''$ White Bear Beach Estates
 $L = 148.04$ White Bear Beach Estates
 $\Delta = 1736'18''$
 $R = 481.50$
 $L = 147.95$

$\Delta = 26'21'33''$
 $R = 706.44$
 $L = 325.00$

$S01'06'02'' E$
 286.37
 Portland

$N25'15'31'' E$
 637.69
 Portland Avenue

OUTLOT D

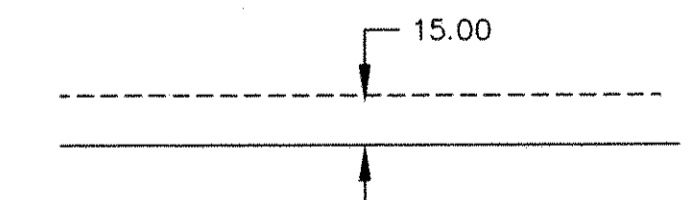
OUTLOT A

PARK

MATCH LINE
SEE SHEET 2

MATCH LINE
SEE SHEET 2

DRAINAGE AND UTILITY EASEMENTS ARE SHOWN THUS:

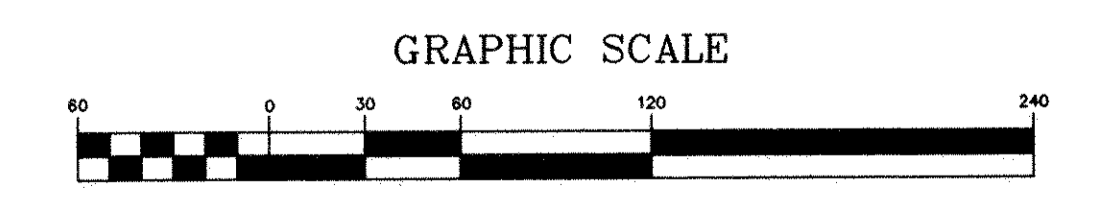


BEING 15 FEET IN WIDTH, UNLESS OTHERWISE INDICATED, AND ADJOINING STREET LINES AS SHOWN ON THIS PLAT.

At all lot corners with no monuments shown will be a 1/2 inch by 18 inch iron pipe marked R.L.S. 9808 set within one year of the recording of this plat.

The orientation of this bearing system is based on the South line of the SE1/4 of Sec.1,T.30,R.22, which is assumed to have a bearing of S 89°45'45" W.

Existing 40 foot san. sewer easement per Doc. No. 2458201



E. G. RUD & SONS, INC.
LAND SURVEYORS

PARKVIEW VILLAGE is a planned community per Minnesota Statutes, Sec. 515B. 2-105(a)(2).