

# HEATHER RIDGE EAST 3RD ADDITION

Know All Persons By These Presents that C. R. Investments, Inc., a Minnesota corporation, fee owner of the following described property situated in the City of Shoreview, Ramsey County, State of Minnesota:

Outlot A, HEATHER RIDGE EAST 2ND ADDITION, according to the recorded plat thereof, Ramsey County, Minnesota.

Has caused the same to be surveyed, platted and known as HEATHER RIDGE EAST 3RD ADDITION and does hereby dedicate to the public for public use forever the drive, court and drainage and utility easements as shown on the plat.

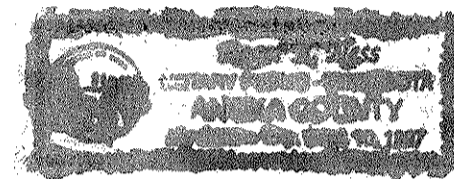
C. R. Investments, Inc., a Minnesota corporation, has caused these presents to be signed by its President this 14<sup>th</sup> day of May, 1992.

Signed: C. R. Investments, Inc.

Clyde L. Rehbein, President  
Clyde L. Rehbein

STATE OF MINNESOTA  
COUNTY OF RAMSEY

The foregoing instrument was acknowledged before me this 14<sup>th</sup> day of MAY, 1992, by Clyde L. Rehbein, President of C. R. Investments, Inc., a Minnesota corporation, on behalf of the corporation.



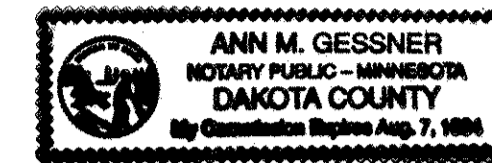
ROGER K. NESS  
Roger K. Ness  
Notary Public,  
Ramsey County, Minnesota  
My Commission Expires 4-10-97

I, Harold C. Peterson, hereby certify that I have surveyed and platted the property described in the dedication of this plat as HEATHER RIDGE EAST 3RD ADDITION; that this plat is a correct representation of said survey; that all distances are correctly shown on the plat; that all monuments have been correctly placed in the ground as shown; that the outside boundary lines are correctly designated on the plat; and there are no wetlands, easements or public highways other than as shown hereon.

Harold C. Peterson  
Harold C. Peterson, Land Surveyor  
Minnesota License No. 12294

STATE OF MINNESOTA  
COUNTY OF DAKOTA

The foregoing Surveyor's Certificate was subscribed and sworn to before me, a Notary Public, this 21<sup>st</sup> day of November, 1991.



Ann M. Gessner  
Notary Public,  
DAKOTA County, Minnesota  
My Commission Expires 8-7-94

Approved and accepted by the City Council of the City of Shoreview, Minnesota, this 13<sup>th</sup> day of JUNE, 1992.

James Chalmers Mayor  
Dwight D. Johnson Clerk

Taxes for the year 1992 on land described herein paid, no delinquent taxes and transfer entered, this 2<sup>nd</sup> day of July, 1992.

Jane McKenna Director  
Department of Property Taxation

By Deanna K. Crager Deputy

Pursuant to Chapter 7, Minnesota Laws of 1976, this plat has been reviewed and approved, this 7<sup>th</sup> day of JULY, 1992, and the conditions of Minnesota Statutes, Section 505.03, Subdivision 2, have been fulfilled.

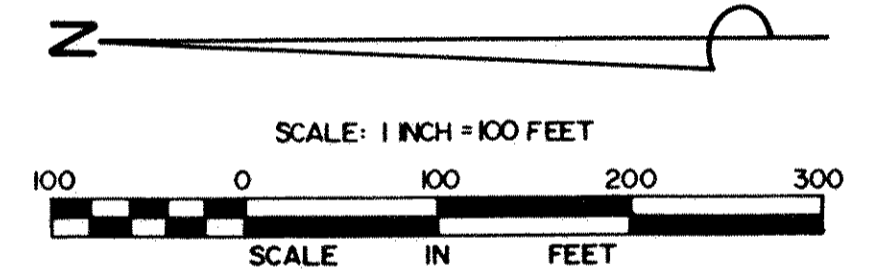
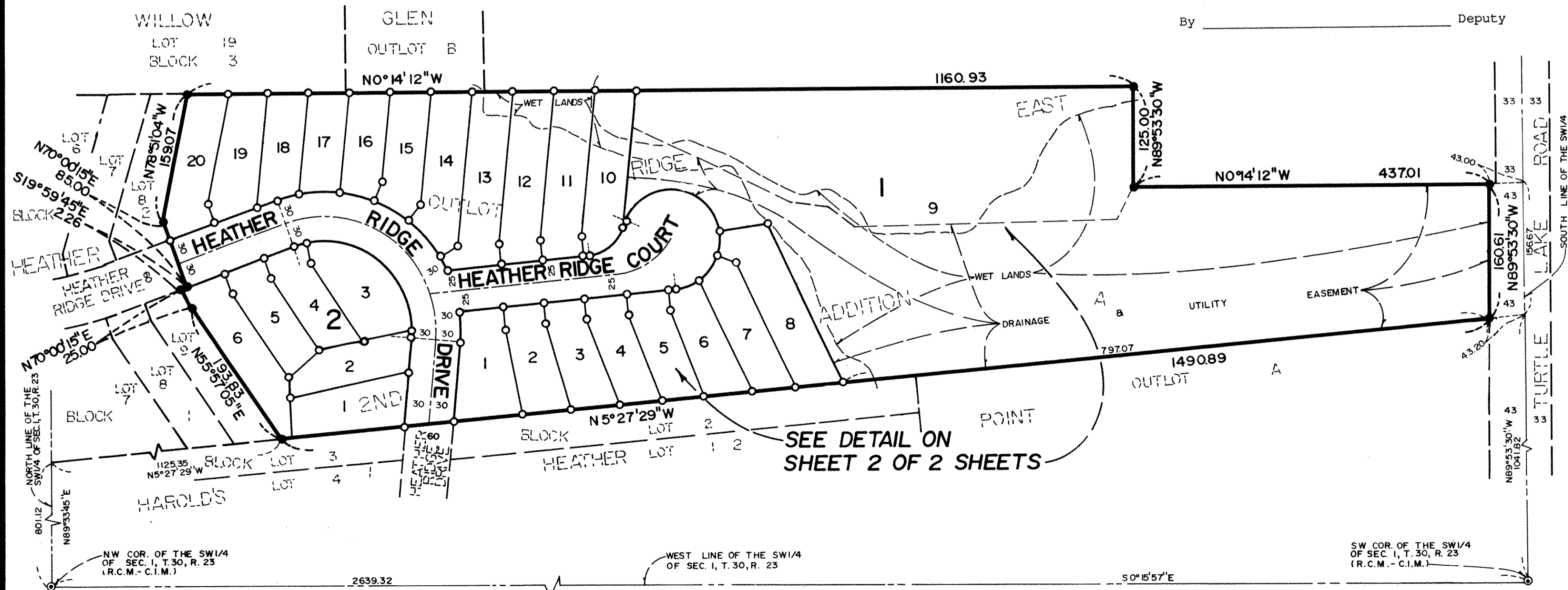
David D. Claypool  
David D. Claypool, Ramsey County Surveyor

Registrar of Titles, County of Ramsey, State of Minnesota

I hereby certify that this plat of HEATHER RIDGE EAST 3RD ADDITION was filed in this office this 22<sup>nd</sup> day of July, 1992, at 1:00 o'clock P.M. and was filed in Book 39 of Plats, Pages 19 and 20, as Document No. 982955.

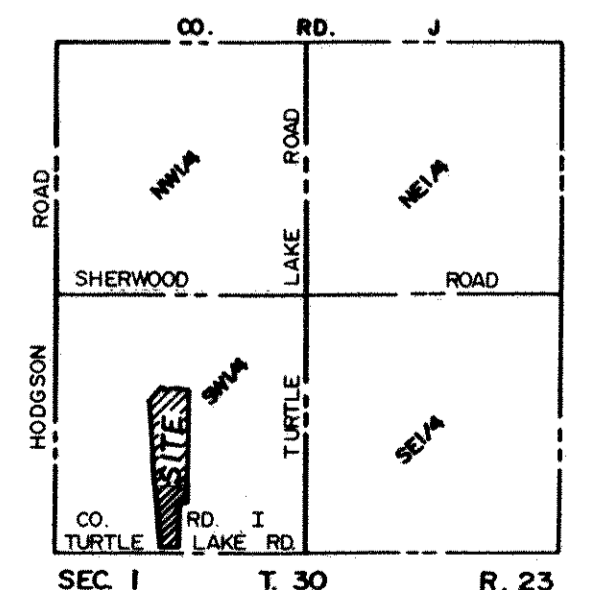
Lou McKenna, Registrar of Titles

By \_\_\_\_\_ Deputy



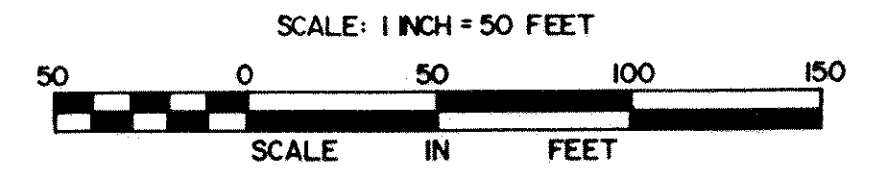
BEARINGS ARE BASED ON THE WEST LINE OF HEATHER RIDGE EAST WHICH IS ASSUMED TO HAVE A BEARING OF N5°27'29\"/>

- DENOTES 1/2 INCH x 1/4 INCH IRON MONUMENT SET AND MARKED BY R.L.S. NO. 12294
- DENOTES IRON MONUMENT FOUND



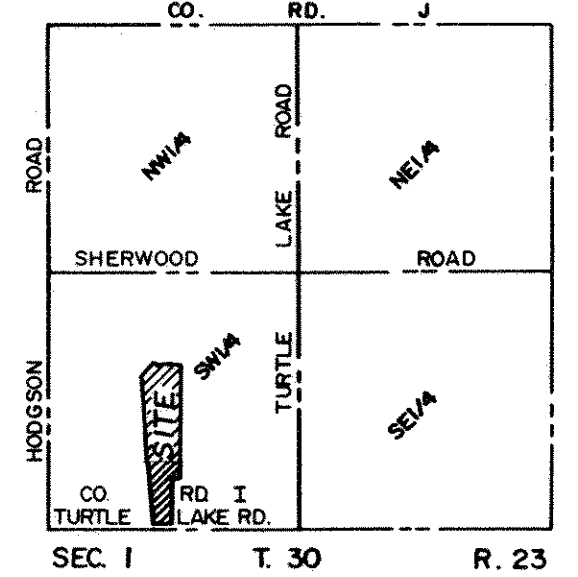
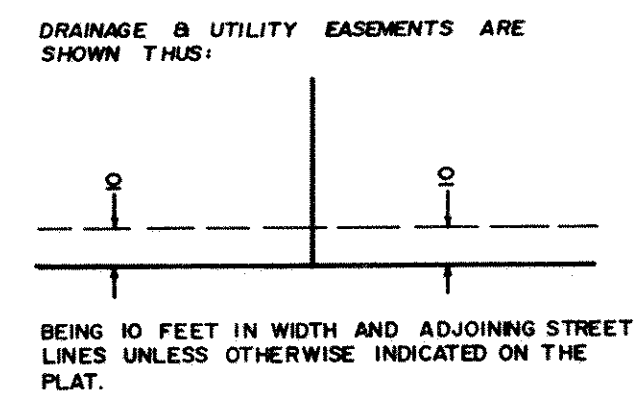
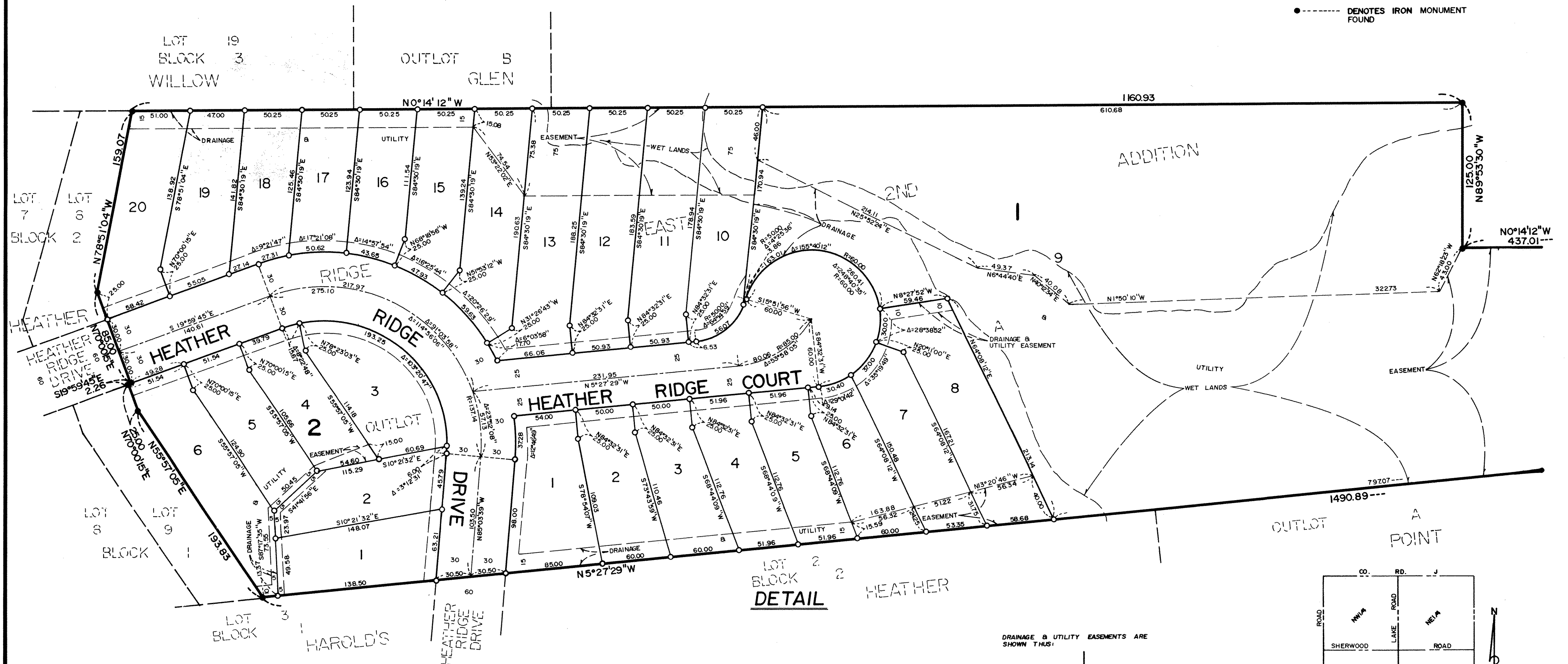
LOCATION MAP  
NO SCALE

# HEATHER RIDGE EAST 3RD ADDITION



BEARINGS ARE BASED ON THE WEST LINE OF HEATHER RIDGE EAST WHICH IS ASSUMED TO HAVE A BEARING OF N5°27'29\"

- DENOTES 1/2 INCH x 1/4 INCH IRON MONUMENT SET AND MARKED BY R.L.S. NO. 12294
- DENOTES IRON MONUMENT FOUND



LOCATION MAP  
NO SCALE