

# PARKWAY PLACE

BEARINGS SHOWN ARE ON AN ASSUMED DATUM

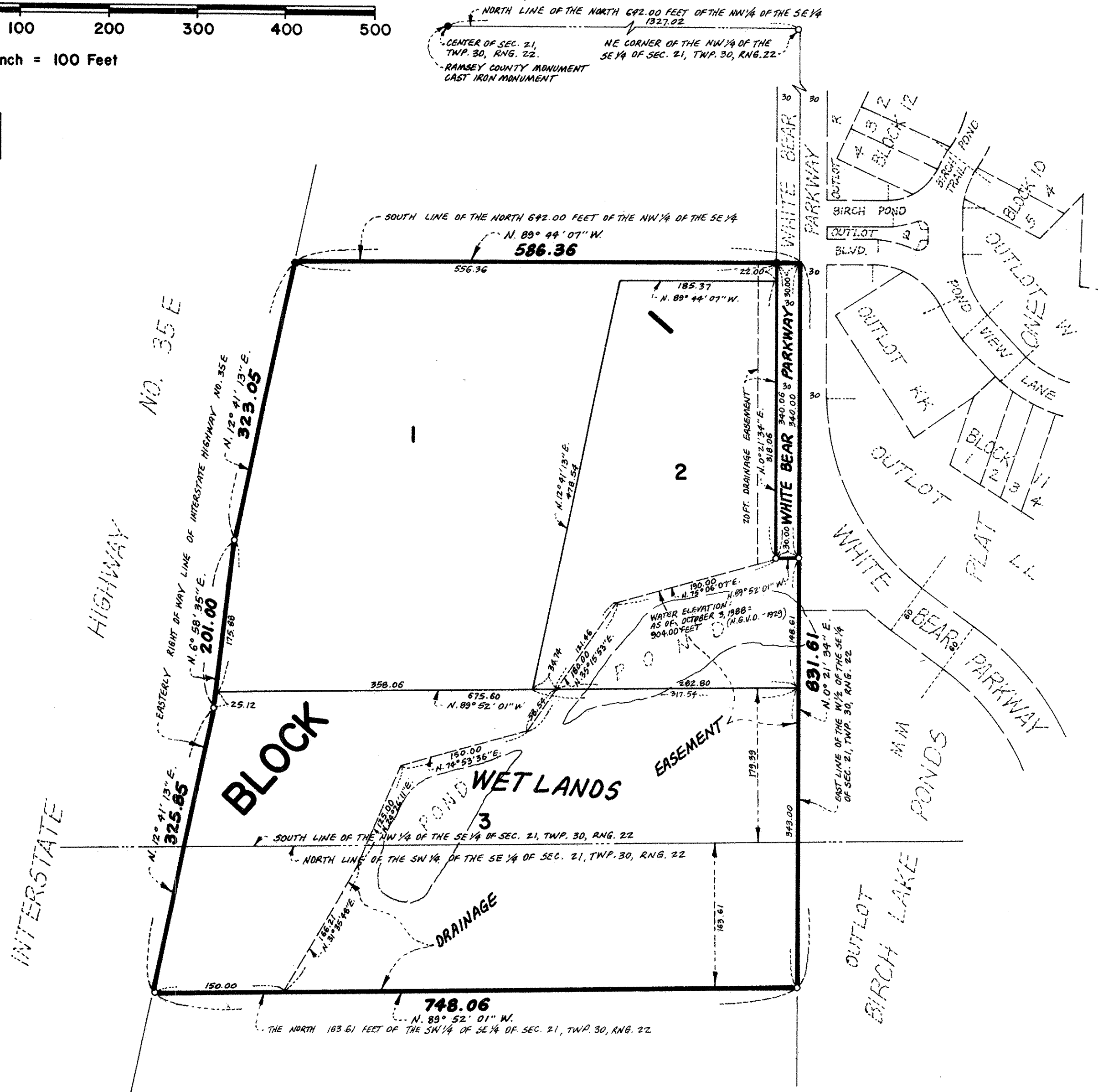
- DENOTES IRON MONUMENT SET
- DENOTES IRON MONUMENT FOUND

Scale in Feet



Scale: 1 Inch = 100 Feet

N



Know All Persons By These Presents that PARKWAY PLACE ASSOCIATES, a Minnesota general partnership, owner and First Wisconsin National Bank of Milwaukee, a National Banking Association organized under the laws of the United States of America, mortgagee of the following described property situated in the City of Vadnais Heights, Ramsey County, Minnesota:

That part of the Northwest Quarter of the Southeast Quarter of Section 21, Township 30, Range 22, described as follows: Beginning at a point in the East line of said Northwest Quarter of the Southeast Quarter, distant 642.00 feet South of the Northeast corner thereof; thence Southerly along said East line a distance of 22.00 feet; thence 89 degrees 44 minutes 07 seconds West (assumed bearing) along a line parallel with the North line of said Northwest Quarter of the Southeast Quarter; a distance of 215.37 feet; thence South 12 degrees 41 minutes 13 seconds West, a distance of 478.54 feet to an intersection with a line parallel with and 179.39 feet North of the South line of said Northwest Quarter of the Southeast Quarter; thence Westerly along said parallel line to the Easterly line of Interstate Highway 35 E; thence Northerly along the Easterly line of said Highway to an intersection with a line drawn Westerly from the point of beginning and parallel with the North line of said Northwest Quarter of the Southeast Quarter; thence South 89 degrees 44 minutes 07 seconds East along said parallel line to the point of beginning.

That part of the North 163.61 feet of the Southwest Quarter of the Southeast Quarter of Section 21, Township 30, Range 22, lying East of Interstate Highway 35 E. That part of the South 179.39 feet of the Northwest Quarter of the Southeast Quarter of Section 21, Township 30, Range 22, lying East of Interstate Highway 35 E.

Also PARKWAY PLACE ASSOCIATES, a Minnesota general partnership, owner and Wayzata Mortgage Company, a Minnesota corporation, mortgagee of the following described property situated in the City of Vadnais Heights, Ramsey County, Minnesota:

That part of the Northwest Quarter of the Southeast Quarter of Section 21, Township 30, Range 22 described as follows: Beginning at a point in the East line of said Northwest Quarter of the Southeast Quarter, distant 642.00 feet South of the Northeast corner thereof; thence North 89 degrees 44 minutes 07 seconds West (assumed bearing) along a line parallel with the North line of said Northwest Quarter of the Southeast Quarter; a distance of 215.37 feet; thence South 12 degrees 41 minutes 13 seconds West, a distance of 478.54 feet to an intersection with a line parallel with and 179.39 feet North of the South line of said Northwest Quarter of the Southeast Quarter; thence Easterly along said parallel line 317.54 feet to the East line of said Northwest Quarter of the Southeast Quarter; thence Northerly along said East line, a distance of 466.61 feet to the point of beginning.

Have caused the same to be surveyed, platted and known as PARKWAY PLACE and do hereby dedicate to the public for public use forever the parkway and drainage easements as shown on the plat. In witness whereof said PARKWAY PLACE ASSOCIATES, a Minnesota general partnership whose general partners are WALL & HONE Development Corp., a Minnesota corporation, and WEIS Development Corporation, a Minnesota corporation, has caused these presents to be signed by its proper partners this 13<sup>TH</sup> day of MARCH, 1989. In witness whereof said First Wisconsin National Bank of Milwaukee, a National Banking Association organized under the laws of the United States of America, has caused these presents to be signed by its proper officers this 16<sup>TH</sup> day of MARCH, 1989. In witness whereof said Wayzata Mortgage Company, a Minnesota corporation, has caused these presents to be signed by its proper officers this 13<sup>TH</sup> day of MARCH, 1989.

Signed: PARKWAY PLACE ASSOCIATES  
General Partner-WALL & HONE Development Corp.  
By Leonard W. Pratt President  
By Warren R. Olson Secretary

Signed: PARKWAY PLACE ASSOCIATES  
General Partner-WEIS Development Corporation  
By Arthur E. Ostlund its VICE PRESIDENT  
By Joseph C. Weis its PRESIDENT

Signed: First Wisconsin National Bank of Milwaukee  
By David L. Pelton its VICE PRESIDENT

Signed: Wayzata Mortgage Company  
By David L. Pelton its President  
By W. R. Crough its V.P.

STATE OF MINNESOTA  
COUNTY OF RAMSEY ) The foregoing instrument was acknowledged before me this 13<sup>th</sup> day of March, 1989, by Leonard W. Pratt, President and by Warren R. Olson, Secretary of WALL & HONE Development Corp., a Minnesota corporation, and by Joseph C. Weis, President of WEIS Development Corporation, a Minnesota corporation, as a General Partner of PARKWAY PLACE ASSOCIATES, a Minnesota general partnership, on behalf of the partnership.

PATRICIA A. BARRY  
NOTARY PUBLIC - MINNESOTA  
RAMSEY COUNTY  
My Commission Expires 10-08-91

Patricia A. Barry  
Notary Public, Ramsey County, Minnesota  
My Commission Expires 10-08-91

STATE OF MINNESOTA  
COUNTY OF RAMSEY ) The foregoing instrument was acknowledged before me this 16<sup>th</sup> day of March, 1989, by JAY WEIS, Sec. - TREAS. and by JOSEPH C. WEIS, PRESIDENT of WEIS Development Corporation, a Minnesota corporation, as a General Partner of PARKWAY PLACE ASSOCIATES, a Minnesota general partnership, on behalf of the partnership.

PATRICIA A. BARRY  
NOTARY PUBLIC - MINNESOTA  
RAMSEY COUNTY  
My Commission Expires 10-08-91

Patricia A. Barry  
Notary Public, Ramsey County, Minnesota  
My Commission Expires 10-08-91

STATE OF MINNESOTA  
COUNTY OF RAMSEY ) The foregoing instrument was acknowledged before me this 16<sup>th</sup> day of March, 1989, by JIM SIMONS, VICE PRESIDENT of First Wisconsin National Bank of Milwaukee, a National Banking Association organized under the laws of the United States of America, on behalf of the association.

PATRICIA A. BARRY  
NOTARY PUBLIC - MINNESOTA  
RAMSEY COUNTY  
My Commission Expires 10-08-91

Patricia A. Barry  
Notary Public, Ramsey County, Minnesota  
My Commission Expires 10-08-91

STATE OF MINNESOTA  
COUNTY OF HENNEPIN ) The foregoing instrument was acknowledged before me this 13<sup>th</sup> day of March, 1989, by David L. Pelton, Pres. and by W. R. Crough, Vice Pres. of Wayzata Mortgage Company, a Minnesota corporation, on behalf of the corporation.

CAROL Y. CHEN  
NOTARY PUBLIC - MINNESOTA  
HENNEPIN COUNTY  
My Commission Expires Nov. 6, 1990

Carol Y. Chen  
Notary Public, Hennepin County, Minnesota  
My Commission Expires Nov. 6, 1990

I, Arthur E. Ostlund, Hereby certify that I have surveyed and platted the property described in the dedication of this plat as PARKWAY PLACE; that this plat is a correct representation of said survey; that all distances are correctly shown on the plat; that all monuments have been correctly placed in the ground as shown; that the outside boundary lines are correctly designated on the plat; and there are no wet lands, easements or public highways other than as shown thereon.

Arthur E. Ostlund  
Arthur E. Ostlund, Land Surveyor  
Minnesota Registration No. 6122

STATE OF MINNESOTA  
COUNTY OF RAMSEY ) The Surveyor's Certificate was subscribed and sworn to before me, a Notary Public, this 13<sup>th</sup> day of March, 1989.

PATRICIA A. BARRY  
NOTARY PUBLIC - MINNESOTA  
RAMSEY COUNTY  
My Commission Expires 10-08-91

Patricia A. Barry  
Notary Public, Ramsey County, Minnesota  
My Commission Expires 10-08-91

Approved and accepted by the City Council of the City of Vadnais Heights, Minnesota, this 21<sup>ST</sup> day of March, 1989.

Robert E. Anderson Mayor      Gerald Urban Clerk

Taxes for the year 1989 on the land described herein paid, no delinquent taxes entered, this 30<sup>th</sup> day of Nov, 1989.

Lou McKenna Director      B. Byrmark Clerk  
Department of Property Division

Pursuant to Chapter 7, Minnesota Laws of 1976, this plat has been reviewed and approved, this 30<sup>th</sup> day of November 1989, and the conditions of Minnesota Statutes, Section 505.03, Subdivision 2, have been fulfilled.

David D. Claypool  
David D. Claypool, Ramsey County Surveyor

County Recorder, County of Ramsey, State of Minnesota  
I hereby certify that this plat of PARKWAY PLACE was filed in this office this 4<sup>th</sup> day of DECEMBER, 1989, at 2:31 o'clock P.M. in Book 105 of Plats, Page 17 as Document No. 2520496.

Lou McKenna, County Recorder      \_\_\_\_\_ Deputy