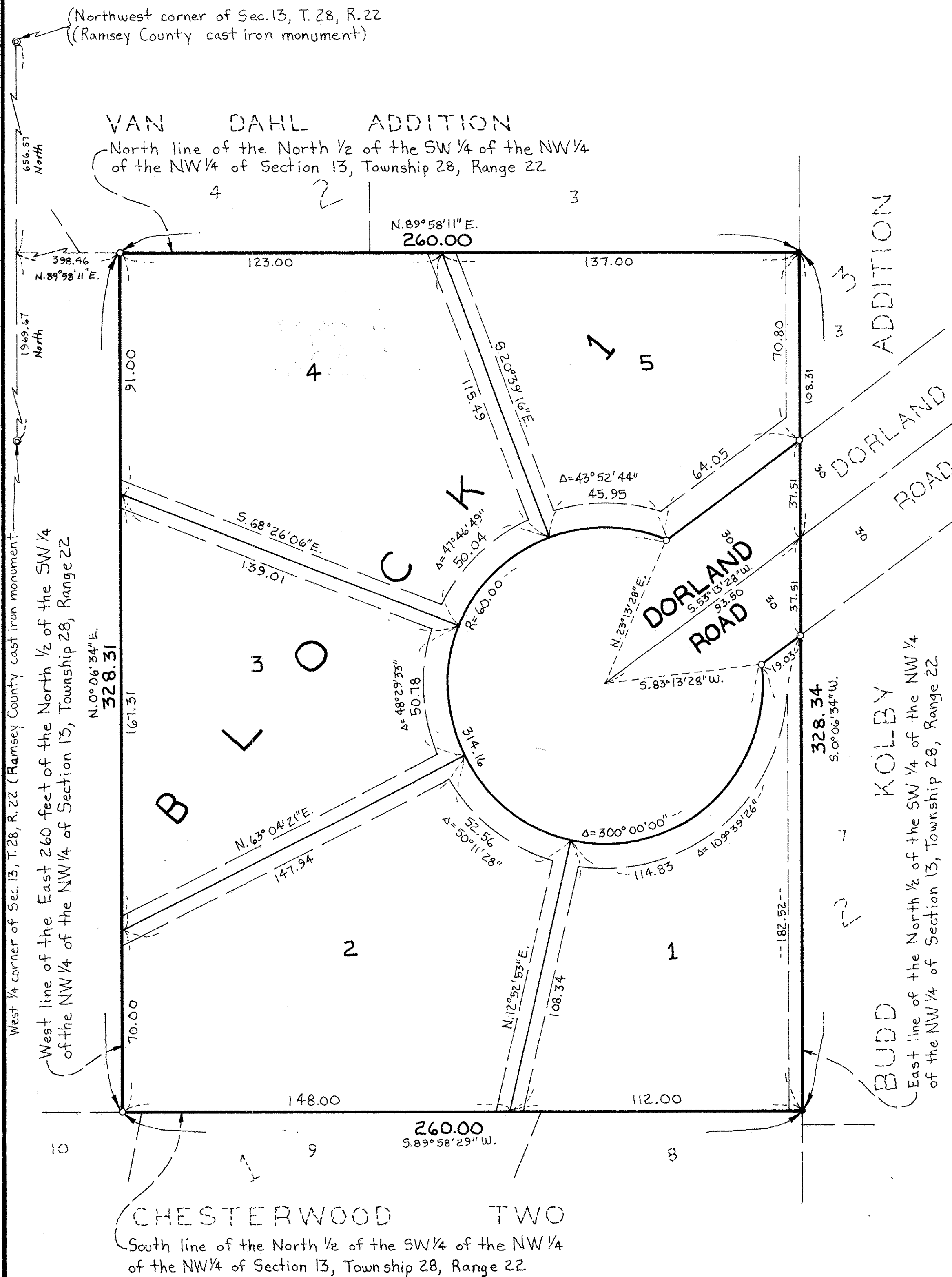
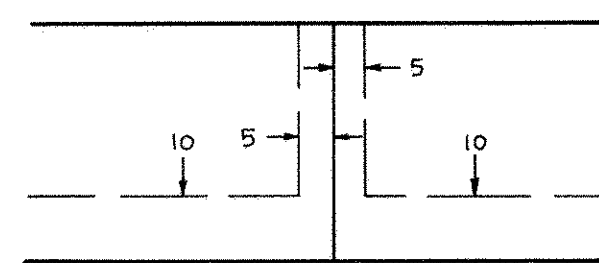


MAIDMENT TERRACE



Drainage and Utility Easements are shown thus:



Being 5 feet in width, unless otherwise indicated, and adjoining lot lines, and 10 feet in width and adjoining street lines as shown on this plat

Know All Persons By These Presents that Karl E. Maidment and Patricia L. Maidment, husband and wife, owners of the following described property situated in the City of Maplewood, Ramsey County, Minnesota:

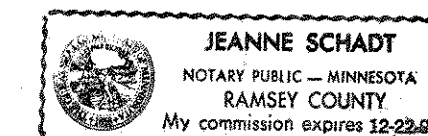
The East 260 feet of the North Half of the Southwest Quarter of the Northwest Quarter of the Northwest Quarter of Section 13, Township 28, Range 22, Ramsey County, Minnesota.

Have caused the same to be surveyed, platted and known as MAIDMENT TERRACE and do hereby dedicate to the public for public use forever the road and drainage and utility easements as shown on the plat. Karl E. Maidment and Patricia L. Maidment, husband and wife, have hereunto set their hands this 24th day of January, 1989.

Signed: Karl E. Maidment
Karl E. Maidment
Patricia L. Maidment
Patricia L. Maidment

STATE OF MINNESOTA)
COUNTY OF Ramsey)

The foregoing instrument was acknowledged before me this 24th day of January, 1989, by Karl E. Maidment and by Patricia L. Maidment, husband and wife.



Jeanne Schadt
Notary Public, Ramsey County, Minnesota
My Commission Expires Dec 22, 1992

I, Howard W. Rogers, hereby certify that I have surveyed and platted the property described in the dedication of this plat as MAIDMENT TERRACE; that this plat is a correct representation of said survey; that all distances are correctly shown on the plat; that all monuments have been correctly placed in the ground as shown; that the outside boundary lines are correctly designated on the plat; and there are no wet lands, easements or public highways other than as shown thereon.

Howard W. Rogers
Howard W. Rogers, Land Surveyor
Minnesota Registration No. 10945

STATE OF MINNESOTA)
COUNTY OF Anoka)

The Surveyor's Certificate was subscribed and sworn to before me, a Notary Public, this 19th day of December, 1988.



Linda R. Domiano
Notary Public, Anoka County, Minnesota
My Commission Expires 6-6-91

Approved and accepted by the City Council of the City of Maplewood, Minnesota, this 24th day of January, 1989.

John Heaven Mayor
Linda E. Kusler Clerk

Taxes for the year 1989 on land described herein paid, no delinquent taxes and transfer entered, this 24th day of January, 1989.

Lou McKenna Director
Department of Property Taxation
By L. J. G. Deputy

Pursuant to Chapter 7, Minnesota Laws of 1976, this plat has been reviewed and approved, this 24th day of January, 1989, and the conditions of Minnesota Statutes, Section 505.03, Subdivision 2, have been fulfilled.

David D. Claypool
David D. Claypool,
Ramsey County Surveyor

County Recorder, County of Ramsey, State of Minnesota

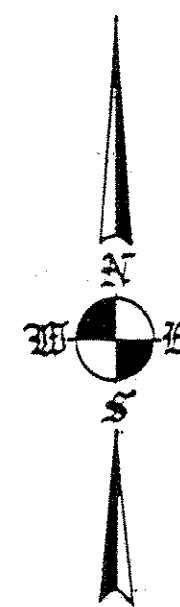
I hereby certify that this plat of MAIDMENT TERRACE was filed in this office this 25th day of January, 1989, at 11:55 o'clock P.M. and was filed in Book 104 of Plats, Page 21, as Document Number 2278132.

Lou McKenna, County Recorder
By _____ Deputy

- Denotes iron monument found in place
- Denotes iron monument set

Located in the North 1/2 of the SW 1/4 of the NW 1/4 of the NW 1/4 of Section 13, Township 28, Range 22

The East line of the North 1/2 of the SW 1/4 of the NW 1/4 of the NW 1/4 of Section 13, Township 28, Range 22 has an assumed bearing of S. 0° 06' 34" W.



Scale in Feet
30 15 0 30 60
Scale: 1 inch = 30 feet