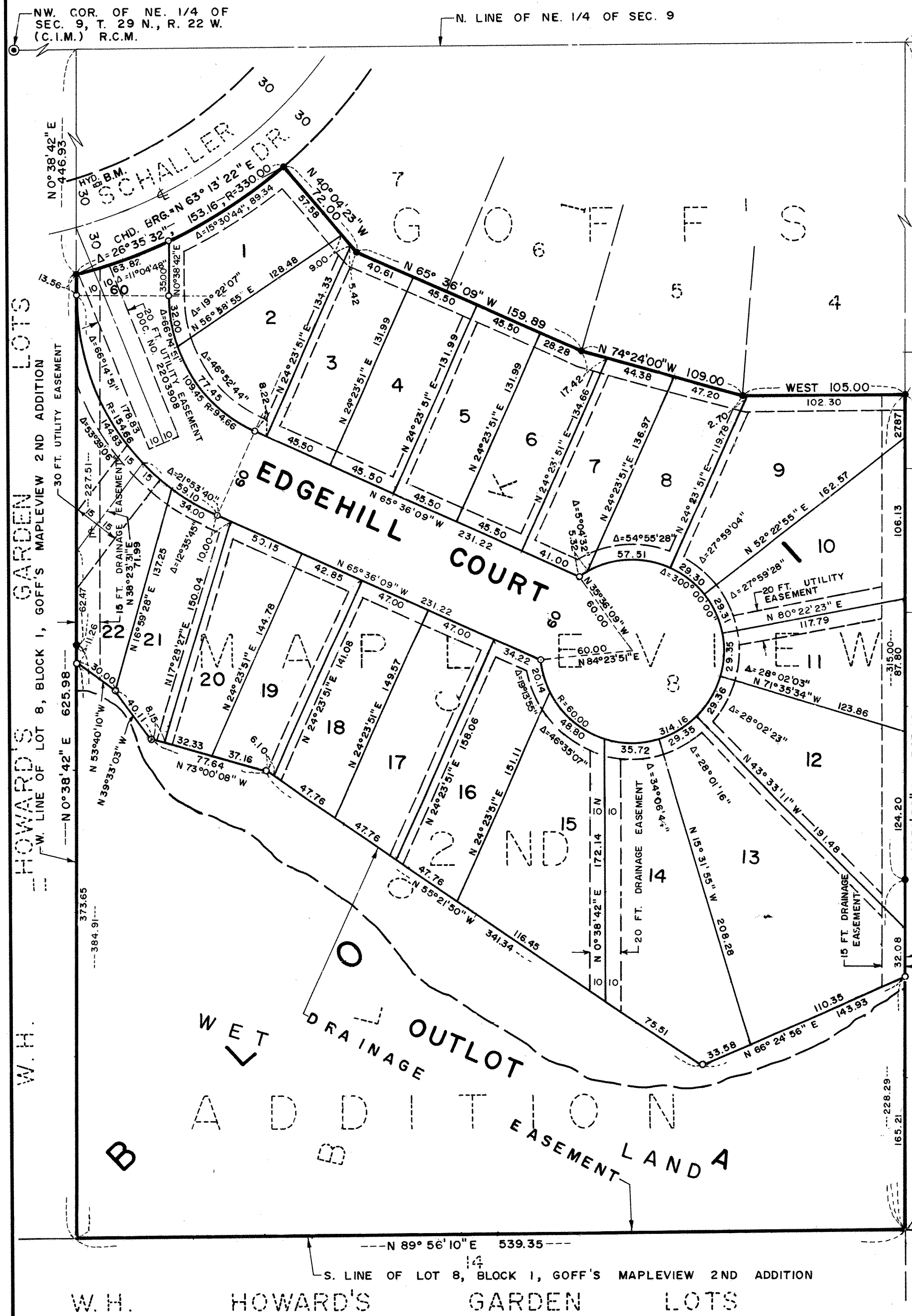


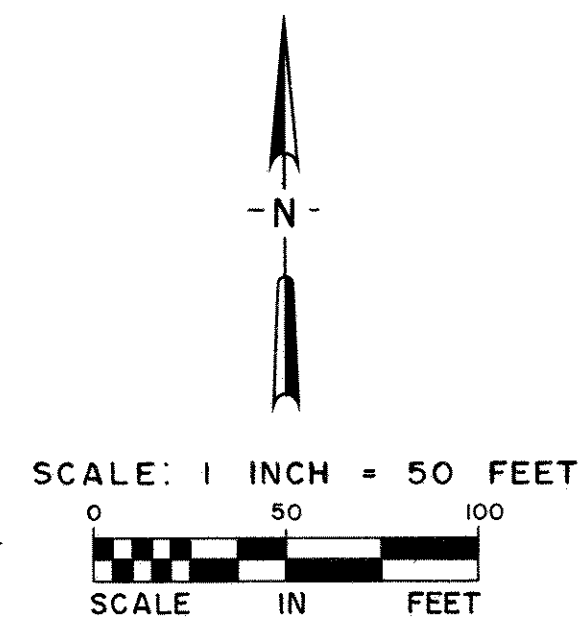
GOFF'S MAPLEVIEW 3RD ADDITION



N.W. COR. OF NE. 1/4 OF SEC. 9, T. 29 N., R. 22 W. (C.I.M.) R.C.M.

N. LINE OF NE. 1/4 OF SEC. 9

NE. COR. OF NE. 1/4 OF SEC. 9, T. 29 N., R. 22 W. (C.I.M.) R.C.M.

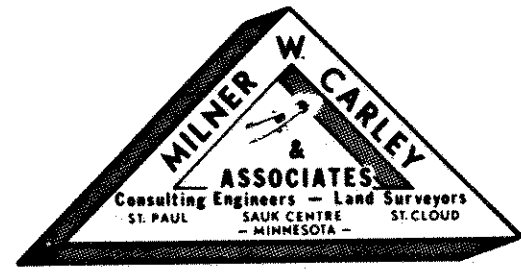


BEARINGS ARE ON AN ASSUMED DATUM

- DENOTES IRON MONUMENT FOUND
- DENOTES IRON MONUMENT SET

DRAINAGE AND UTILITY EASEMENTS ARE SHOWN THUS:

BEING 5 FEET IN WIDTH, UNLESS OTHERWISE INDICATED, AND ADJOINING LOT LINES, AND 10 FEET IN WIDTH AND ADJOINING BLOCK LINES, AS SHOWN ON THE PLAT.



BENCH MARK: Top nut of hydrant Edgehill Ct. and Schaller Dr. Elevation = 891.81 feet M.S.L.D. 5th Gen. Adj 1929

Know All Persons By These Presents that Rehbein-Husnik Development Co., a Minnesota corporation, owner, Patrick W. Goff and Carol Rhoades Goff, husband and wife, contract purchasers and Builders Development & Finance, Inc., a Minnesota Corporation, mortgagee, of the following described property situated in the City of Maplewood, Ramsey County, Minnesota:

Lot 8, Block 1, Goff's Mapleview 2nd Addition.

Have caused the same to be surveyed, platted and known as GOFF'S MAPLEVIEW 3RD ADDITION and do hereby dedicate to the public for public use forever the Court and drainage and utility easements as shown on the plat.

Rehbein-Husnik Development Co., a Minnesota corporation, has caused these presents to be signed by its proper officers this 10th day of NOVEMBER, 1988.

Signed:
 Rehbein-Husnik Development Co.
James A. Husnik its President
Raymond A. Rehbein its Secretary

In witness whereof Patrick W. Goff and Carol Rhoades Goff, husband and wife, have hereunto set their hands this 10th day of NOVEMBER, 1988.

Signed:
Patrick W. Goff
Carol Rhoades Goff
 Patrick W. Goff
 Carol Rhoades Goff

Builders Development & Finance, Inc., a Minnesota corporation, has caused these presents to be signed by its proper officers this 31st day of October, 1988.

Signed:
 Builders Development & Finance, Inc., a Minnesota Corporation
Michael J. Fanta its Assistant Vice President

STATE OF MINNESOTA) ss
 COUNTY OF Ramsey) ss
 The foregoing instrument was acknowledged before me this 10th day of November, 1988, by *James A. Husnik* Pres. and by *Raymond A. Rehbein* Sec. of Rehbein-Husnik Development Co., a Minnesota Corporation, on behalf of the corporation.

Suzanne D. Lott
 Notary Public, Ramsey County, Minnesota
 My Commission Expires 9-25-92

STATE OF MINNESOTA) ss
 COUNTY OF Ramsey) ss
 The foregoing instrument was acknowledged before me this 10th day of November, 1988, by Patrick W. Goff and by Carol Rhoades Goff, husband and wife.

Suzanne D. Lott
 Notary Public, Ramsey County, Minnesota
 My Commission Expires 9-25-92

STATE OF MINNESOTA) ss
 COUNTY OF Ramsey) ss
 The foregoing instrument was acknowledged before me this 31st day of October, 1988, by *Michael J. Fanta*, Assistant Vice Pres. of Builders Development & Finance, Inc., a Minnesota corporation, on behalf of the corporation.

Suzanne D. Lott
 Notary Public, Ramsey County, Minnesota
 My commission expires Aug. 25, 1992

I, David E. Torgersen, hereby certify that I have surveyed and platted the property described in the dedication of this plat as GOFF'S MAPLEVIEW 3RD ADDITION; that this plat is a correct representation of said survey; that all distances are correctly shown on the plat; that all monuments have been correctly placed in the ground as shown; that the outside boundary lines are correctly designated on the plat; and there are no wet lands, easements or public highways other than as shown thereon.

David E. Torgersen
 David E. Torgersen, Registered Land Surveyor
 Minnesota Registration No. 17551

STATE OF MINNESOTA) ss
 COUNTY OF Ramsey) ss
 The Surveyor's Certificate was subscribed and sworn to before me, a Notary Public, this 31st day of October, 1988.

Suzanne D. Lott
 Notary Public, Ramsey County, Minnesota
 My Commission Expires Aug. 25, 1992

Approved and accepted by the City Council of the City of Maplewood, Minnesota, this 15th day of November, 1988.

John Larson Mayor
Michael A. McGinnis, m.p.

Taxes for the year 1988 on land described herein paid, no delinquent taxes and transfer entered, this 10th day of November, 1988.

Lou McKenna Director
Stephanie Stoffel Deputy
 Department of Property Taxation

Pursuant to Chapter 7, Minnesota Laws of 1976, this plat has been reviewed and approved, this 22nd day of November, 1988, at 3:56 o'clock P.M. and was filed in Book 104 of Plats, Page 7, and the conditions of Minnesota Statutes, Section 505.03, Subdivision 2, have been fulfilled.

David D. Claypool
 David D. Claypool
 Ramsey County Surveyor

County Recorder, County of Ramsey, State of Minnesota

I hereby certify that this plat of GOFF'S MAPLEVIEW 3RD ADDITION was filed in this office this 22nd day of November, 1988, at 3:56 o'clock P.M. and was filed in Book 104 of Plats, Page 7, as Document No. 2470097.

By _____ Deputy
 Lou McKenna County Recorder