

# WELECZKI ADDITION

CITY OF ROSEVILLE  
RAMSEY COUNTY, MINNESOTA

GEORGI-SCHMIDT & ASSOCIATES, INC.  
LAND SURVEYORS

Know All Persons By These Presents that Charles Louis Weleccki and Susanne Weleccki, husband and wife, owners, and Norwest Financial Minnesota, Inc., a Minnesota Corporation, mortgagee of the following described property situated in the City of Roseville, Ramsey County, Minnesota:

Lots 1, 2 and 3, Block 1, Stuber Addition and that part of the vacated Easterly 16.5 feet of Dale Street adjoining said Block 1 as dedicated in said Stuber Addition.

Have caused the same to be surveyed, platted and known as WELECZKI ADDITION and do hereby dedicate to the public for public use forever the street and utility and drainage easements as shown on the plat.

Have hereunto set our hands this 19 day of SEPTEMBER, 1988.

Signed: Charles Louis Weleccki  
Charles Louis Weleccki  
Susanne Weleccki  
Susanne Weleccki

Norwest Financial Minnesota, Inc., a Minnesota Corporation, has caused these presents to be signed by its proper officer

this 20th day of SEPTEMBER, 1988.

Signed: Steve Conard  
Steve Conard  
its Manager

STATE OF MINNESOTA  
COUNTY OF RAMSEY )  
The foregoing instrument was acknowledged before me this 19 day of September, 1988, by Charles Louis Weleccki and by Susanne Weleccki, husband and wife.

Mardell I. Olesen  
Notary Public, Anoka County, Minnesota  
My Commission Expires 9-9-1991

STATE OF MINNESOTA  
COUNTY OF RAMSEY )  
The foregoing instrument was acknowledged before me this 20th day of September, 1988, by Steve Conard, Manager of Norwest Financial Minnesota, Inc., a Minnesota Corporation, on behalf of the corporation.

Audrey Brynjulson  
Notary Public, Hennepin County, Minnesota  
My Commission Expires 11/5/91

I, Donald W. Schmidt, hereby certify that I have surveyed and platted the property described in the dedication of this plat as WELECZKI ADDITION; that this plat is a correct representation of said survey; that all distances are correctly shown on the plat; that all monuments have been correctly placed in the ground as shown; that the outside boundary lines are correctly designated on the plat; and there are no wet lands or public highways other than as shown thereon.

Donald W. Schmidt  
Donald W. Schmidt, Land Surveyor  
Minnesota Registration No. 10459

STATE OF MINNESOTA  
COUNTY OF RAMSEY )  
The Surveyor's Certificate was subscribed and sworn to before me, a Notary Public, this 23rd day of September, 1988.

Alan John Irwin  
Alan John Irwin  
Notary Public, Anoka County, Minnesota  
My Commission Expires 6/16/92

ALAN JOHN IRWIN  
ANOKA COUNTY  
NOTARY PUBLIC - MINNESOTA  
My commission expires 6-16-92

Approved and accepted by the City Council of the City of Roseville, Minnesota this 13 day of April, 1988.

Frank Rog Mayor  
James T. Goube Clerk

Taxes for the year 1988 on land described herein paid, no delinquent taxes and transfer entered, this 26th day of September, 1988.

Lou McKenna Director By [Signature] Deputy  
Department of Property Taxation

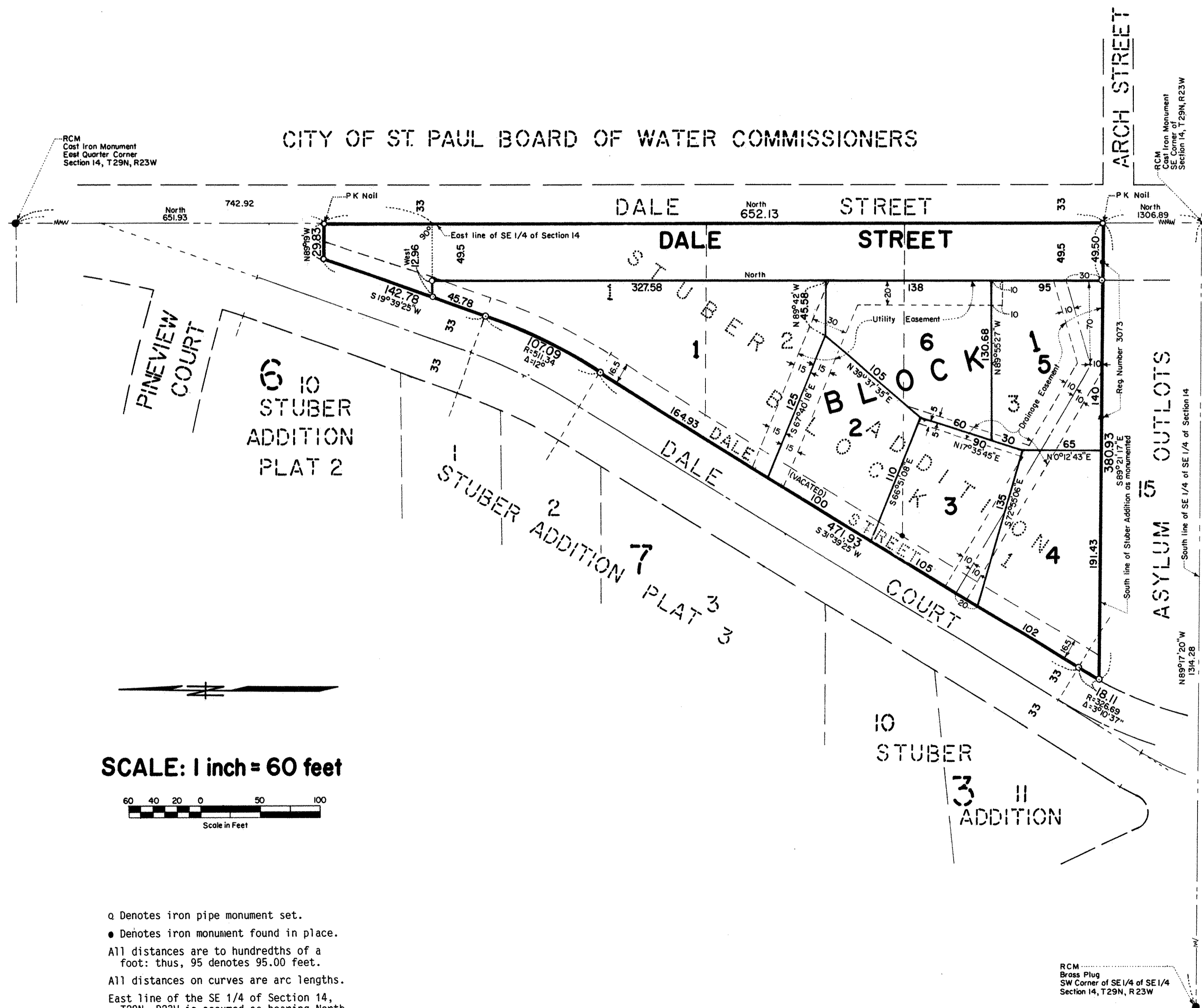
Pursuant to Chapter 7, Minnesota Laws of 1976, this plat has been reviewed and approved, this 21st day of September, 1988, and the conditions of Minnesota Statutes, Section 505.03, Subdivision 2, have been fulfilled.

David D. Claypool  
David D. Claypool  
Ramsey County Surveyor

County Recorder, County of Ramsey, State of Minnesota

I hereby certify that this plat of WELECZKI ADDITION was filed in this office this 29 day of September, 1988, at 4:09 o'clock P.M. and was filed in Book 103 of Plats, Page 34, as Document No. 2461591.

Lou McKenna, County Recorder By \_\_\_\_\_ Deputy



SCALE: 1 inch = 60 feet



o Denotes iron pipe monument set.  
● Denotes iron monument found in place.  
All distances are to hundredths of a foot: thus, 95 denotes 95.00 feet.  
All distances on curves are arc lengths.  
East line of the SE 1/4 of Section 14, T29N, R23W is assumed as bearing North.

RCM  
Bross Plug  
SW Corner of SE 1/4 of SE 1/4  
Section 14, T29N, R23W