

RIVER VIEW ADDITION TO SAINT PAUL.

I certify that I have surveyed and platted the following described parcel of lands - to wit: Commencing at the N.W. corner of Block 89 of Banning and Oliver's Addition to West Saint Paul, thence North 30° on the West line of Block 89 produced to the center of Belmont St. of Banning and Oliver's Addition, thence West along the center line of Belmont Street 6815 feet, thence South West to a point on the center line of Winona Street of Banning and Oliver's Addition - produced West 8544 feet from the intersection of said center line of Winona St. and the West line of said Block 89 produced south, thence East along said center line of Winona Street to said point, thence North to place of beginning, and have placed iron monuments at the corners as shown on this map, that this is a correct map of said survey.

State of Minnesota }
County of Ramsey }

Notary Public for said County

On the 27th day of Aug. 1884. Personally appeared before me S. B. Hawley, to me well known to be the identical person who surveyed the above described piece of land, and executed the above certificate and acknowledged that said certificate was correct and his free act and deed.

S. B. Hawley
Notary Public Ramsey County

Examined and approved on the 6th day of Sept. 1884

Adopted by the Common Council on the 7th day of Oct. 1884.

Approved by the Plat Commission on the 13th day of Sept. 1884.

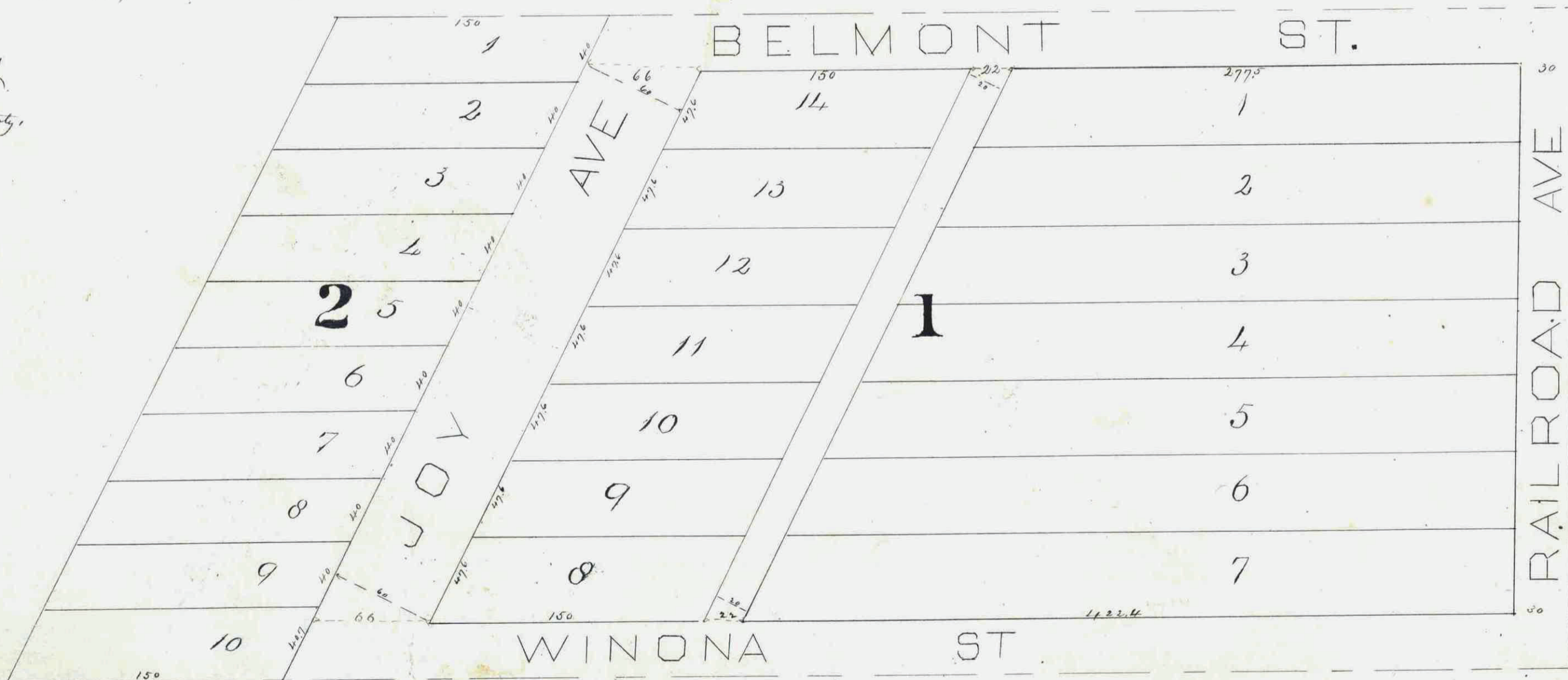
We the undersigned owners of the following described piece of land - to wit: Commencing at the North West corner of Block 89 of Banning and Oliver's Addition to West Saint Paul, thence North 30° on the West line of said Block 89 produced to the center of Belmont Street of Banning and Oliver's Addition, thence West along the center line of Belmont Street 6815 feet, thence South West to a point on the center line of Winona Street of Banning and Oliver's Addition - produced West 8544 feet from the intersection of said center line of Winona Street and the West line of Block 89 produced south, thence East along said center line of Winona Street to said point, thence North to place of beginning, being a part of Lots 7 & 8, Section 12, Township 28, Range 23 West, hereby certify that we have caused the same to be surveyed and platted as shown on this map laid out and indicated. In witness whereof we have placed our hands and seals on the 2nd day of Aug. 1884.

In the presence of
Geo. W. Walsh
M. C. Little

State of Minnesota }
County of Ramsey }

On the 2nd day of Aug. 1884. Personally appeared before me Charles Joy and Jane D. Joy his wife to me well known to be the identical persons who executed the above certificate and acknowledged the same to be their free act and deed.

Geo. W. Walsh
Notary Public
Ramsey County



This plat document is an UNOFFICIAL copy of a Subdivision Plat or Registered Land Survey and is made available for information purposes only.

To obtain an official copy please contact the Ramsey County Recorder's Office.



STATE OF MINNESOTA } ss.
County of Ramsey }
Office of the Register of Deeds.
This is to certify that the within instrument was filed for Record in this Office, at St. Paul, on the 27th day of August, A. D. 1884, at 2 o'clock P. M., and that the same was duly recorded in Book... of... Plates... pages...
By *R. B. Hawley* Register of Deeds.

CITY TREASURERS OFFICE
ST. PAUL, MINN.
OCT 25 1884
ASSESSMENTS PAID
Geo. W. Walsh CITY TREASURER