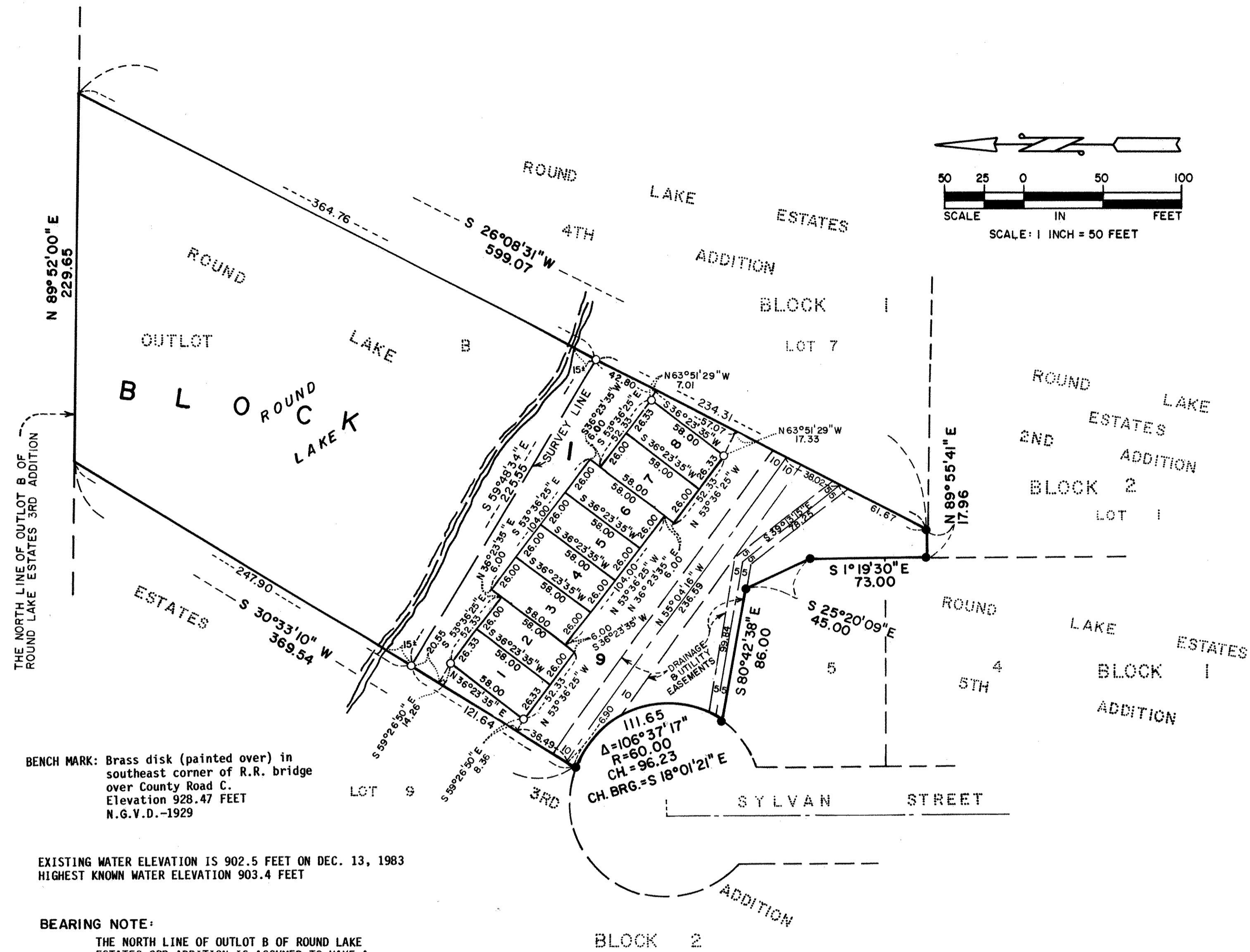


ORR SCHELEN MAYERON
AND ASSOCIATES, INC.
LAND SURVEYORS AND
CONSULTING ENGINEERS

ROUND LAKE ESTATES 6TH ADDITION



BENCH MARK: Brass disk (painted over) in southeast corner of R.R. bridge over County Road C. Elevation 928.47 FEET N.G.V.D.-1929

EXISTING WATER ELEVATION IS 902.5 FEET ON DEC. 13, 1983
HIGHEST KNOWN WATER ELEVATION 903.4 FEET

BEARING NOTE:
THE NORTH LINE OF OUTLOT B OF ROUND LAKE ESTATES 3RD ADDITION IS ASSUMED TO HAVE A BEARING OF N 89°52'00\"/>

● DENOTES IRON MONUMENT, FOUND
○ DENOTES 1/2 INCH IRON PIPE SET, CAPPED R.L.S. NO. 11394

THIS PLAT IS LOCATED IN THE SOUTHEAST QUARTER OF THE SOUTHWEST QUARTER OF SECTION 6, T. 29N, R. 22W

Know All Persons By These Presents that North Suburban Company, a Minnesota partnership consisting of Richard J. Schreier and Patricia A. Schreier, fee owner, of the following described property situated in the City of Little Canada, Ramsey County, Minnesota:

Outlot B, Round Lake Estates 3rd Addition

Has caused the same to be surveyed, platted and known as ROUND LAKE ESTATES 6TH ADDITION and does hereby dedicate to the public for public use forever the utility and drainage easements as shown on the plat.

North Suburban Company, a Minnesota partnership consisting of Richard J. Schreier, a partner and Patricia A. Schreier, a partner has caused these presents to be signed by its proper partners this 31 day of August, 1987.

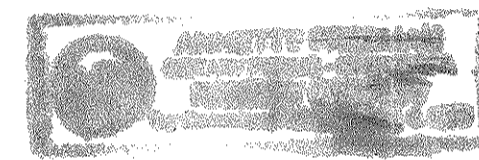
Signed: North Suburban Company

Richard J. Schreier
Richard J. Schreier, a partner

Patricia A. Schreier
Patricia A. Schreier, a partner

STATE OF MINNESOTA)
COUNTY OF RAMSEY)

The foregoing instrument was acknowledged before me this 31 day of August, 1987, by Richard J. Schreier, a partner and by Patricia A. Schreier, a partner of North Suburban Company, a Minnesota partnership, on behalf of the partnership.



Annelle Freeman
Notary Public, Ramsey County, Minnesota
My Commission Expires 12-4-88

I, D. Edward Ames, hereby certify that I have surveyed and platted the property described in the dedication of this plat as ROUND LAKE ESTATES 6TH ADDITION; that this plat is a correct representation of said survey; that all distances are correctly shown on the plat; that all monuments have been correctly placed in the ground as shown; that the outside boundary lines are correctly designated on the plat; and there are no wetlands, easements or public highways other than as shown thereon.

D. Edward Ames
D. Edward Ames, Land Surveyor
Minnesota Registration No. 11394

STATE OF MINNESOTA)
COUNTY OF RAMSEY)

The Surveyor's Certificate was subscribed and sworn to before me, a Notary Public, this 27th day of August, 1987.



Daniel R. McGibbon
Daniel R. McGibbon
Notary Public, Ramsey County, Minnesota
My Commission Expires January 30, 1990

Approved and accepted by the City Council of the City of Little Canada, Minnesota, this 2nd day of September, 1987.

Michael D. Foley
Mayor

Joseph A. Chubbuck
Clerk

Taxes for the year 1987 on land described herein paid, no delinquent taxes and transfer entered, this 2 day of September, 1987.

Lou McKenna Director
Department of Property Taxation

By Sue Barkwell Deputy

Pursuant to Chapter 7, Minnesota Laws of 1976, this plat has been reviewed and approved, this 13th day of October, 1987, and the conditions of Minnesota Statutes, Section 505.03, Subdivision 2, have been fulfilled.

David D. Claypool
David D. Claypool
Acting Ramsey County Surveyor

Registrar of Titles, County of Ramsey, State of Minnesota

I hereby certify that this plat of ROUND LAKE ESTATES 6TH ADDITION was filed in this office this 5th day of October, 1987, at 10:00 o'clock A.M. and was filed in Book 36 of Plats, Page 42, as Document No. 850848.

John C. McLaughlin, Registrar of Titles

By _____ Deputy