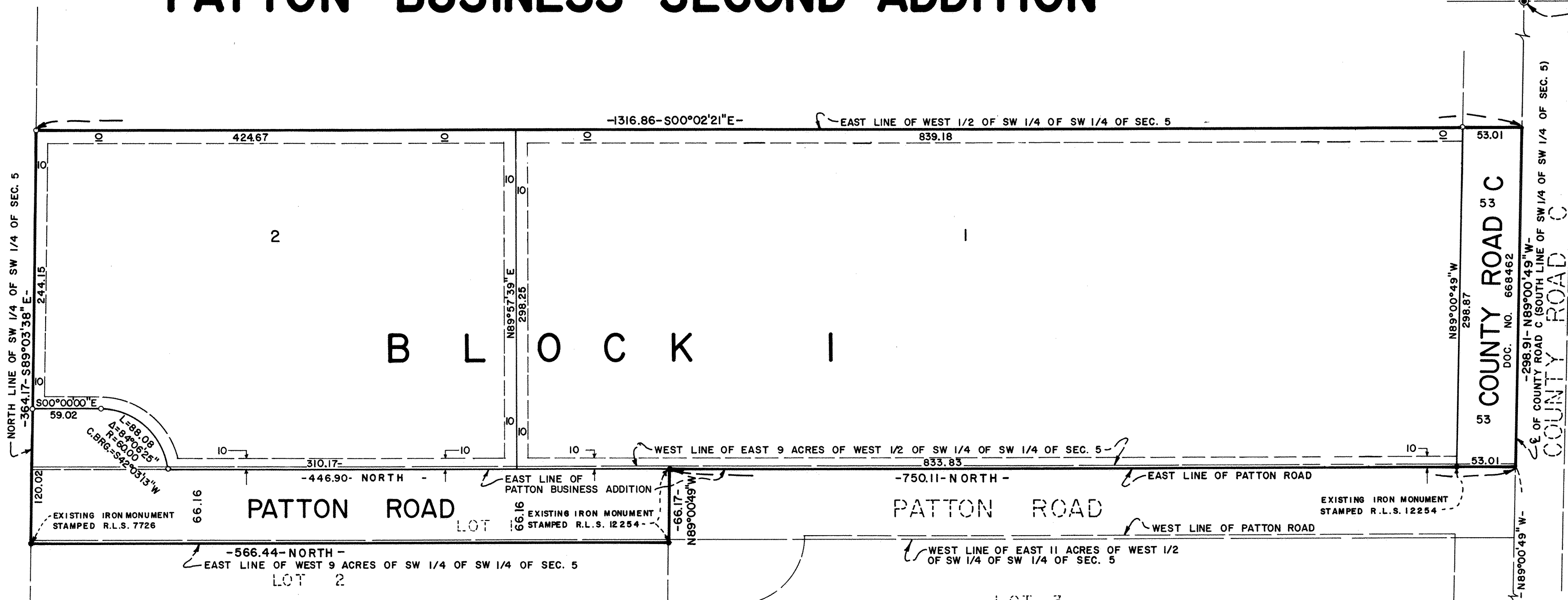


PATTON BUSINESS SECOND ADDITION



Know All Persons By These Presents that Commers-Klodt, a Minnesota partnership, consisting of Lake West, a Minnesota partnership and Commers Enterprises - Southtown, a Minnesota partnership, fee owner, and Norwest Bank Minneapolis, National Association, a National Banking Association, mortgagee of the following described property situated in the City of Roseville, Ramsey County, Minnesota:

The East 9 acres of the West 1/2 of the Southwest 1/4 of the Southwest 1/4 of Section 5, Township 29, Range 23, according to the U.S. Government Survey thereof.

and
That part of the West Half of the Southwest Quarter of the Southwest Quarter, Section 5, Township 29, Range 23, Ramsey County, Minnesota, lying east of the east line of PATTON BUSINESS ADDITION and west of the west line of the East 9 acres of said West Half of the Southwest Quarter of the Southwest Quarter, Section 5, Township 29, Range 23, Ramsey County, Minnesota,

and that Commers-Klodt, a Minnesota partnership, consisting of Lake West, a Minnesota partnership and Commers Enterprises - Southtown, a Minnesota partnership, fee owner of the following described property situated in the City of Roseville, Ramsey County, Minnesota:

Lot 1, Block 1, PATTON BUSINESS ADDITION, Ramsey County, Minnesota.

Have caused the same to be surveyed, platted and known as PATTON BUSINESS SECOND ADDITION and do hereby dedicate to the public for public use forever the roads and the utility and drainage easements as shown on the plat.

Commers-Klodt, a Minnesota partnership, consisting of Lake West, a Minnesota partnership, and Commers Enterprises - Southtown, a Minnesota partnership, has caused these presents to be signed by Paul Klodt, a partner of Lake West, a Minnesota partnership, and by Daniel P. Commers, a partner of Commers Enterprises - Southtown, a Minnesota partnership, this 1st day of June, 1987.

By: Commers-Klodt, a Minnesota Partnership
By: Lake West, a Minnesota partnership
By: Commers Enterprises - Southtown, a Minnesota partnership
By: Daniel P. Commers, a Partner

STATE OF MINNESOTA
COUNTY OF HENNEPIN
The foregoing instrument was acknowledged before me, a Notary Public, on this 1st day of June, 1987, by Paul Klodt, a partner in Lake West, a Minnesota partnership, on behalf of said partnership as a partner in Commers-Klodt, a Minnesota partnership.

STATE OF MINNESOTA
COUNTY OF HENNEPIN
The foregoing instrument was acknowledged before me, a Notary Public, on this 1st day of June, 1987, by Daniel P. Commers, a partner in Commers Enterprises - Southtown, a Minnesota partnership, on behalf of said partnership as a partner in Commers-Klodt, a Minnesota partnership.

STATE OF MINNESOTA
COUNTY OF HENNEPIN
The foregoing instrument was acknowledged before me, a Notary Public, on this 1st day of June, 1987, by Daniel P. Commers, a partner in Commers Enterprises - Southtown, a Minnesota partnership, on behalf of said partnership as a partner in Commers-Klodt, a Minnesota partnership.

PATTON BUSINESS ADDITION BLOCK I

Norwest Bank Minneapolis, National Association, a National Banking Association, has caused these presents to be signed by its proper officers and its corporate seal to be hereunto affixed this 2nd day of June, 1987.

Signed: Norwest Bank Minneapolis, National Association
Michael Wagner its Vice President
[Signature] its Vice President

STATE OF MINNESOTA
COUNTY OF HENNEPIN
The foregoing instrument was acknowledged before me this 2nd day of June, 1987, by Sarah S. Hobbs, Vice President, and by Michael A. Wagner, Vice President, of Norwest Bank Minneapolis, National Association, a National Banking Association, on behalf of the association.

Edna J. Jones
Notary Public, Hennepin County, Minnesota
My Commission Expires 3-26-90

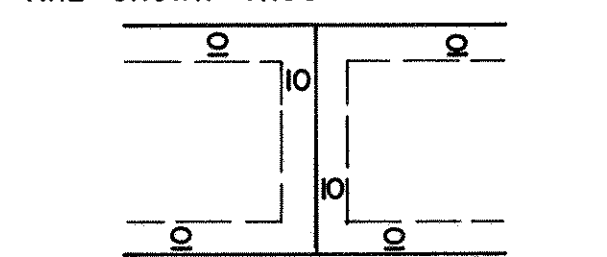
I, Walter J. Gregory, hereby certify that I have surveyed and platted the property described in the dedication of this plat as PATTON BUSINESS SECOND ADDITION; that this plat is a correct representation of said survey; that all distances are correctly shown on the plat; that all monuments have been correctly placed in the ground as shown; that the outside boundary lines are correctly designated on the plat; and there are no wet lands, easements or public highways other than as shown thereon.

Walter J. Gregory
Walter J. Gregory, Land Surveyor
Minnesota Registration No. 14889

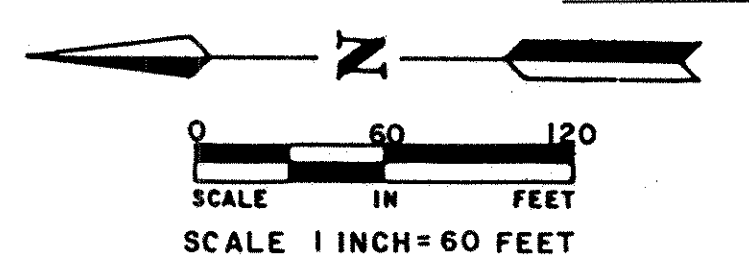
STATE OF MINNESOTA
COUNTY OF HENNEPIN
The Surveyor's Certificate was subscribed and sworn to before me, a Notary Public, this 2nd day of March, 1987.

Marilyn Lindsay
Notary Public, Hennepin County, Minnesota
My Commission Expires 1/9/88

DRAINAGE AND UTILITY EASEMENTS ARE SHOWN THUS:



BEING 10 FEET IN WIDTH, UNLESS OTHERWISE NOTED, AND ADJOINING SIDE LOT LINES, REAR LOT LINES, AND RIGHT-OF-LINES, AS SHOWN ON PLAT, EXCEPT ALONG COUNTY ROAD C.



○ DENOTES IRON MONUMENT SET WITH CAP STAMPED R.L.S. 14889, UNLESS NOTED.
ORIENTATION OF THIS BEARING SYSTEM IS ON AN ASSUMED DATUM

Approved and accepted by the City Council of the City of Roseville, Minnesota, this 3rd day of June, 1987.

Donna R. Skile, Mayor

Taxes for the year 1987 on land described herein paid, no delinquent taxes and transfer entered, this 5th day of June, 1987.

Lou McKenna, Director
Stephanie Cowley, Deputy
Department of Property Taxation

Pursuant to Chapter 7, Minnesota Laws of 1976, this plat has been reviewed and approved this 5th day of June, 1987, and the conditions of Minnesota Statutes, Section 505.03, Subdivision 2, have been fulfilled.

David D. Claypool
Acting Ramsey County Surveyor

County Recorder, County of Ramsey, State of Minnesota

I hereby certify that this plat of PATTON BUSINESS SECOND ADDITION was filed in this office this 22nd day of July, 1987, at 8:10 o'clock A.M. and was filed in Book 101 of Plats, Page 22, as Document No. 239352-A # 84362607

Torrens Doc. No. 843626
John C. McLaughlin, County Recorder
By _____ Deputy

SE COR. OF SW 1/4 OF SEC. 5, T29, R23, RAMSEY COUNTY, CAST IRON MONUMENT

53 COUNTY ROAD C
DOC. NO. 668462

HENNEPIN COUNTY CAST IRON MONUMENT SW COR. OF SEC. 5, T29, R23, RAMSEY CO.