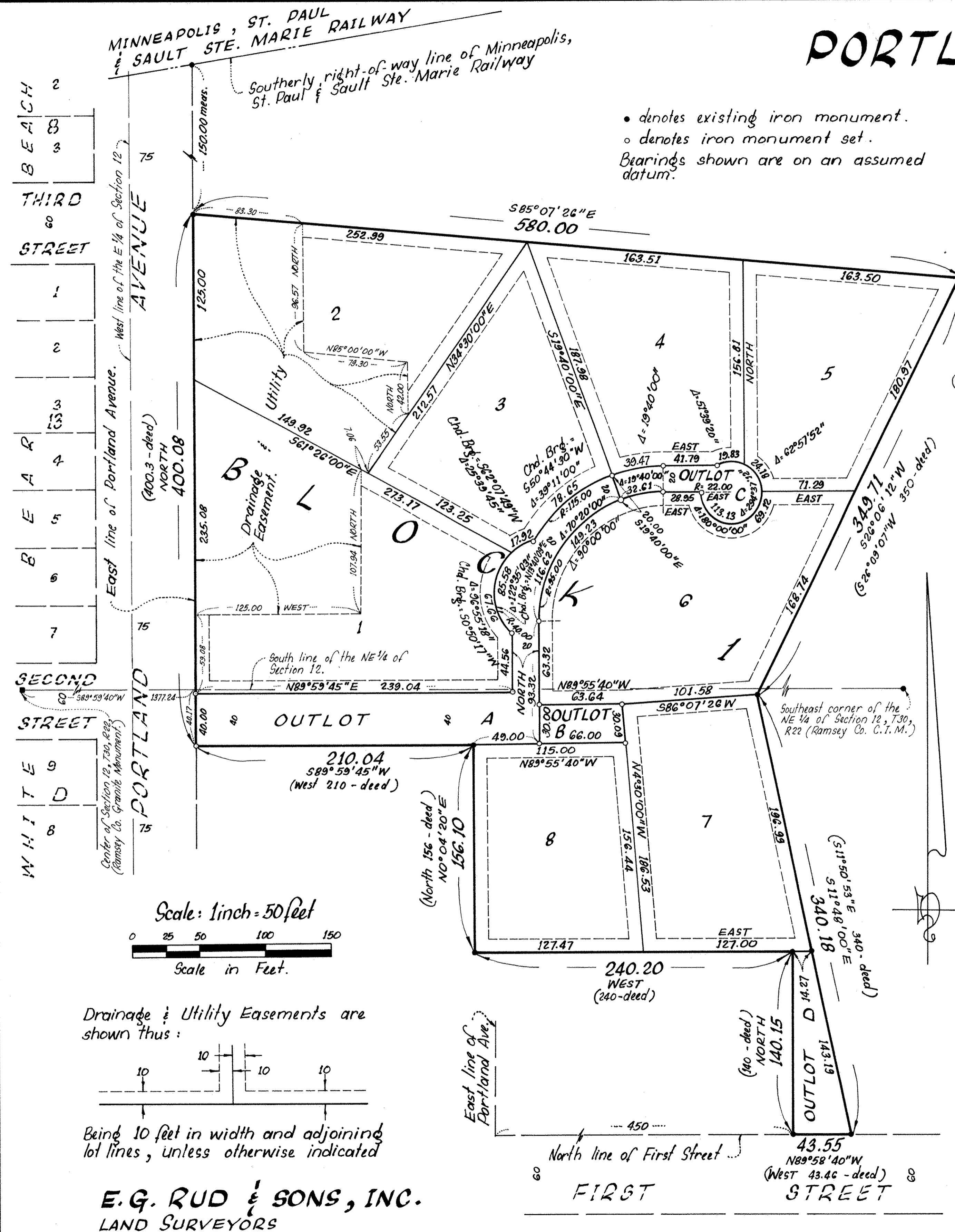


# PORTLAND WOODS ESTATES



• denotes existing iron monument.  
 ○ denotes iron monument set.  
 Bearings shown are on an assumed datum.

Know All Persons By These Presents that Cherne Development, Inc., a Minnesota corporation, owner and Maplewood State Bank, a Minnesota corporation, mortgagee of the following described property situated in the Township of White Bear, Ramsey County, Minnesota:

All that part of the East One-Quarter of Section 12, Township 30, Range 22 described as follows: Commencing at the intersection of the southerly right of way line of the Minneapolis, St. Paul and Sault Ste. Marie Railway with the East line of Portland Avenue; thence South on said East line 150 feet to the point of beginning; thence South 85 degrees 07 minutes 26 seconds East 580 feet; thence South 26 degrees 09 minutes 07 seconds West 350 feet; thence South 11 degrees 50 minutes 53 seconds East 340 feet to the North line of First Street; thence West on said Northerly line 43.46 feet to a point 450 feet Easterly of the East line of Portland Avenue, as measured along said North line of First Street; thence North 140 feet; thence West parallel to the Northerly line of First Street 240 feet; thence North 156 feet; thence West 210 feet to the Easterly line of Portland Avenue; thence North 400.3 feet to the point of beginning.

Have caused the same to be surveyed, platted and known as PORTLAND WOODS ESTATES and do hereby dedicate to the public for public use forever the drainage and utility easements as shown on the plat.

Cherne Development, Inc., a Minnesota corporation, has caused these presents to be signed by its proper officer this 24th day of February, 1987.

Signed: Cherne Development, Inc.  
 Russell E. Cherne, President

Maplewood State Bank, a Minnesota corporation, has caused these presents to be signed by its proper officers this 24th day of February, 1987.

Signed: Maplewood State Bank  
 Carol A. Kennedy, its Cashier

State of Minnesota  
 County of Ramsey  
 The foregoing instrument was acknowledged before me this 24th day of February, 1987, by Russell E. Cherne, President of Cherne Development, Inc., a Minnesota corporation, on behalf of the corporation.

Mary Lou Milender  
 Notary Public - Minnesota  
 Ramsey County  
 My Commission Expires 11-23-91

State of Minnesota  
 County of Ramsey  
 The foregoing instrument was acknowledged before me this 24th day of February, 1987, by Ernest G. Rud, Land Surveyor, on behalf of the corporation.

Mary Lou Milender  
 Notary Public - Minnesota  
 Ramsey County  
 My Commission Expires 11-23-91

I, Ernest G. Rud, hereby certify that I have surveyed and platted the property described in the dedication of this plat as PORTLAND WOODS ESTATES; that this plat is a correct representation of said survey; that all distances are correctly shown on the plat; that all monuments have been correctly placed in the ground as shown; that the outside boundary lines are correctly designated on the plat; and there are no wet lands, easements or public highways other than as shown thereon.

Ernest G. Rud  
 Ernest G. Rud, Land Surveyor  
 Minnesota Registration No. 9808

State of Minnesota  
 County of Anoka  
 The Surveyor's Certificate was subscribed and sworn to before me, a Notary Public, this 18th day of February, 1987.

Marian E. Rud  
 Notary Public - Minnesota  
 Anoka County  
 My Commission Expires May 24, 1991

Approved and accepted by the Town Board of the Township of White Bear, Minnesota, this 12th day of March, 1987.

George A. Jorgensen  
 Chairman

W. J. Malinen  
 Clerk

Taxes for the year 1987 on land described herein paid, no delinquent taxes and transfer entered, this 12th day of March, 1987.

Lou McKenna  
 Director  
 Department of Property Taxation  
 By D. McDonough, Deputy

Pursuant to Chapter 7, Minnesota Laws of 1976, this plat has been reviewed and approved, this 20th day of March, 1987, and the conditions of Minnesota Statutes, Section 505.03, Subdivision 2, have been fulfilled.

David D. Claypool  
 David D. Claypool  
 Acting Ramsey County Surveyor

County Recorder  
 County of Ramsey, State of Minnesota  
 I hereby certify that this plat of PORTLAND WOODS ESTATES was filed in this office this 23rd day of March, 1987, at 1:27 o'clock P.M. and was filed in Book 100 of Plats, Page 2369127, as Document No. 2369127.

John C. McLaughlin, County Recorder  
 By \_\_\_\_\_ Deputy

E. G. RUD & SONS, INC.  
 LAND SURVEYORS